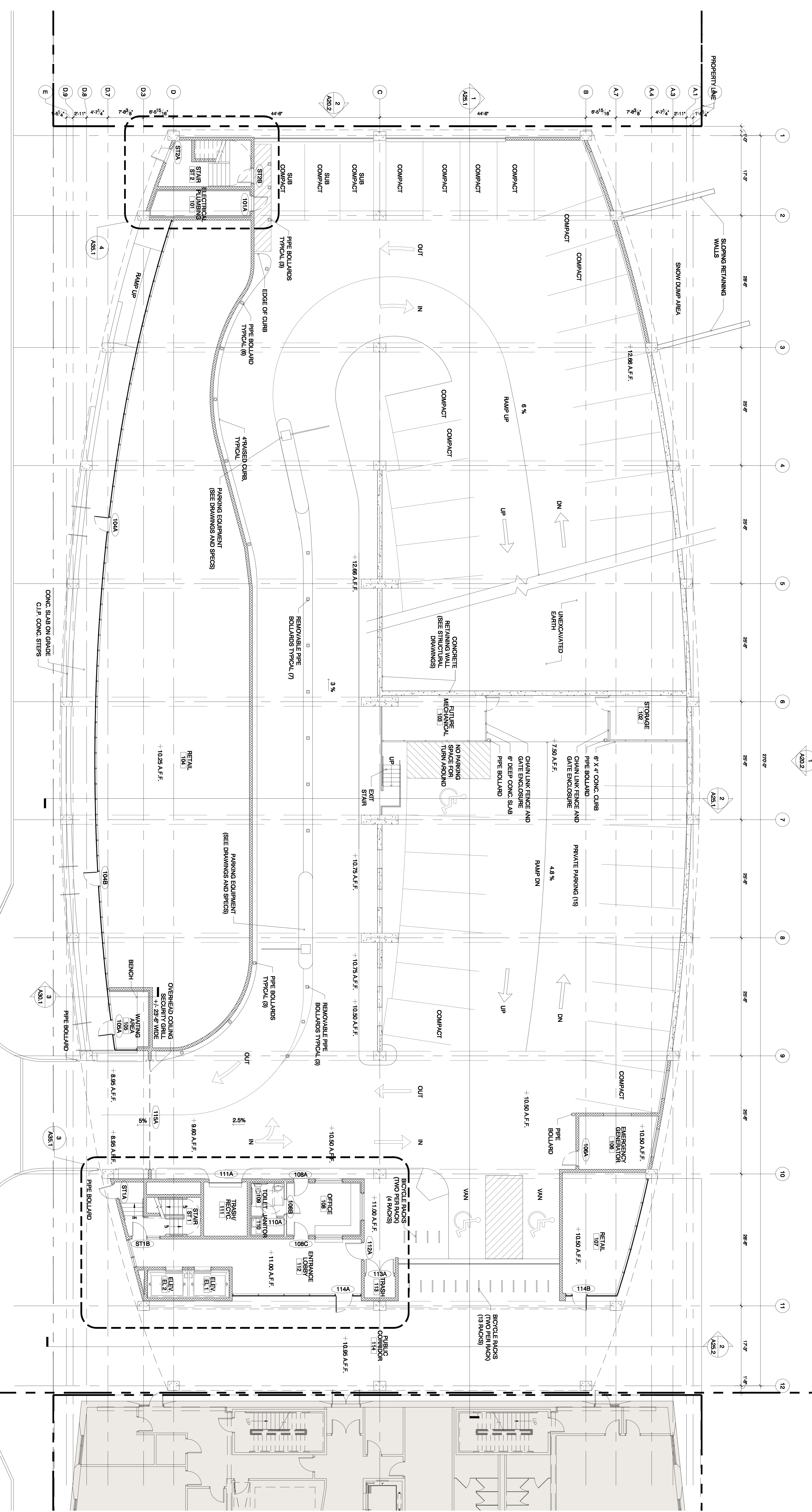


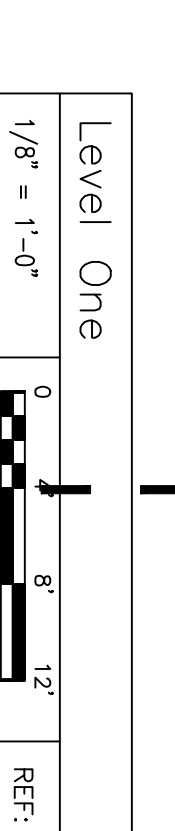
PARKING KEY / QUANTITY - LEVEL 1			
NOTE: CAR COUNT CALCULATED TO COL. 3			
STANDARD	8'-0" x 18'-0"	17	
COMPACT	8'-0" x 15'-0"	6	
SUB-COMPACT	7'-3" x 15'-0"	1	
HC VAN	8'-0" x 18'-0"	2	
HC CAR	8'-0" x 18'-0"	1	
TOTAL		27	



PARKING KEY / QUANTITY - LEVEL 1			
NOTE: CAR COUNT CALCULATED TO COL. 3			
STANDARD	8'-0" x 18'-0"	17	
COMPACT	8'-0" x 15'-0"	6	
SUB-COMPACT	7'-3" x 15'-0"	1	
HC VAN	8'-0" x 18'-0"	2	
HC CAR	8'-0" x 18'-0"	1	
TOTAL		27	

SOMERSET STREET

GARAGE  
OFFICE BLDG.



**CONSTRUCTION MARKER**  
 8 MARK STAKE  
 1/2" DIA. X 18" LONG  
 P/N: 201713-000  
 100-257-217-2800

**CONSISTAL**  
 ARCHITECTS  
 31 York Street  
 Portland, Maine 04101  
 P: 207-773-6600  
 F: 207-773-6602  
 www.consistal.com

**BECKER**  
 ARCHITECTS  
 121 Middle Street  
 Portland, Maine 04101  
 P: 207-773-6600  
 F: 207-773-6602  
 www.beckerarch.com

**SSP**  
 31 York Street  
 Portland, Maine 04101  
 P: 207-773-6600  
 F: 207-773-6602  
 www.ssp.com

**HARRIMAN**  
 Architects + Engineers  
 Adams Building Inc.  
 Adams Building Inc.  
 267 Middle Street  
 Portland, Maine 04101  
 P: 207-773-6600  
 F: 207-773-6602  
 www.harriman.com

Project Title  
**MAINEHEALTH & UNITED WAY PARKING GARAGE**  
 PORTLAND, MAINE

Project No.  
 2008-0040

Key Plan

Revised Notes or Legend Here

Date	Description
01-07-08	SITE BUILDING PACKAGE
12-18-08	60% CONSTRUCTION DOCUMENTS
11-09-08	100% DESIGN DEVELOPMENT
10-28-08	50% DESIGN DEVELOPMENT

NOT FOR CONSTRUCTION SITE COORDINATION ONLY

Level One  
 Ground Floor Plan

GA10.1