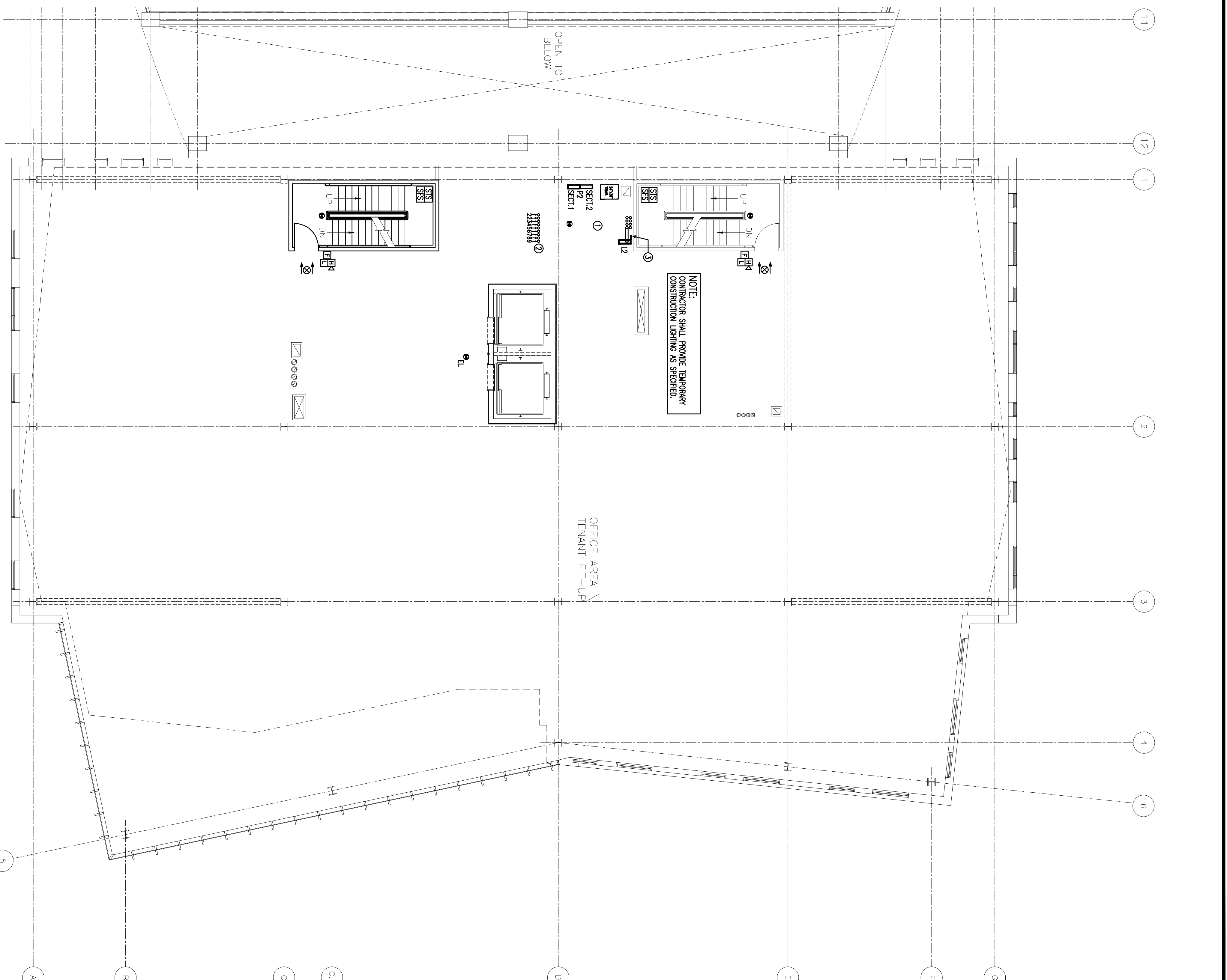


FIRST FLOOR PLAN
Scale: 1/8" = 1'-0"

- GROUND FLOOR POWER, EQUIPMENT & CONDUIT PLAN KEY NOTES**
- ① PROVIDE SIX 2" CONDUIT UNDERSLAB TO GENERATOR CONTROL PANEL. SEE GROUND DRAWING E2011 AND SITE PLAN E2010. COORDINATE WITH GRAVE AND SITE CONTRACTORS.
 - ② PROVIDE ONE 1" CONDUIT FOR POWER UNDERSLAB TO PANEL 7H1 IN NORMAL ELECTRICAL ROOM AND ONE 1" CONDUIT UNDERSLAB TO TEL/DATA BENCHES IN TEL/DATA ROOM FOR COMMUNICATIONS. PROVIDE PULL ROPE IN EACH CONDUIT. COORDINATE WITH GRAVE CONTRACTORS.
 - ③ PROVIDE ONE 4" CONDUIT FOR COMMUNICATIONS UNDERSLAB TO COMMUNICATIONS MANHOLE. COORDINATE WITH GRAVE AND SITE CONTRACTORS.
 - ④ PROVIDE DIRT 4" CONDUIT FOR POWER UNDERSLAB TO CAP. TRANSFORMER WALL. COORDINATE WITH ELECTRICAL. SEE PLAN E2010, ONE SITE PLAN AND OTHER ROOMS. COORDINATE WITH GRAVE AND SITE CONTRACTORS.
 - ⑤ PROVIDE TWO 1-1/2" CONDUITS TO THE ALARM ANNUNCIATOR PANEL.
 - ⑥ PROVIDE TWO 1" CONDUITS FROM COMMAND CENTER TO GROUND OFFICE. COORDINATE WITH GRAVE AND SITE CONTRACTORS.
 - ⑦ PROVIDE 9-4" CONDUITS WITH PULL ROPE UP TO TEL/DATA ROOMS. TWO FOR THE 2ND FLOOR, ONE TO EACH DATA ROOM 3rd THIRD BN AND ONE TO THE 5th FLOOR MECHANICAL ROOM. LOCATE CONDUITS CLOSE TO CEILING. PROVIDE BONDING BUSHINGS AND BRAN TO GROUND BAR AT DRAWING ROOM. PROVIDE GREEN INSULATED COPPER BONDING CONDUCTORS AS REQUIRED. LABEL CONDUIT ACCORDINGLY.
 - ⑧ PROVIDE TELECOMMUNICATIONS WIRE GROUNDING BUS BAR PER WAVE MERRILL CENTER INFORMATION TECHNOLOGY DEPARTMENT REQUIREMENTS. PROVIDE CHRISTENWORTH #10227-012 GROUND BUS BAR WITH CHRISTENWORTH #10227-000 BUS BAR INSULATORS. SEE WAVE IT SPECIFICATIONS.
 - ⑨ PROVIDE 3/4"x4"x8" 1/2" GROUND PLUMBED AROUND PERIMETER OF ALL TEL/DATA ROOMS. PAINT WITH 2 COATS OF WHITE FIRE-RETARDANT PAINT.
 - ⑩ PROVIDE THREE 1-1/4" LIFE SAFETY PANEL CONDUITS FROM PANEL 1311* TO PANELS ON 4th, 7th AND 8th FLOORS.



SECOND FLOOR PLAN
Scale: 1/8" = 1'-0"

- SECOND FLOOR POWER & SYSTEMS KEY NOTES**
- ① PROVIDE TEMPORARY WIRING FOR ALL ELECTRICAL EQUIPMENT.
 - ② OVP STEPS DURING CONSTRUCTION FOR COMMUNICATIONS TO TEL/DATA ROOMS.
 - ③ LIFE SAFETY PANEL CONDUITS TO NEXT FLOOR.

- GENERAL NOTES**
1. COORDINATE ALL WORK WITH OTHER TRADES.
 2. UNDERFLOOR PLUMBING SHALL BE PROPERLY SEALED TO PREVENT AIR LEAKAGE AT ALL PENETRATIONS.
 3. CONDUIT SHALL BE INSTALLED IN ACCORDANCE WITH THE NATIONAL ELECTRICAL CODE AND ALL APPLICABLE LOCAL, STATE AND FEDERAL REGULATIONS.
 4. CONDUIT SHALL BE INSTALLED IN ACCORDANCE WITH THE NATIONAL ELECTRICAL CODE AND ALL APPLICABLE LOCAL, STATE AND FEDERAL REGULATIONS.
 5. PROVIDE FLEXIBLE MATED CABLE FOR ALL TEL/DATA COMMUNICATIONS INSTALLATIONS.
 6. COORDINATE FINAL LOCATIONS OF THE ALARM DEVICES, INCLUDING SMOKE DETECTORS, FIRE PULLS AND ADDRESSABLE DEVICES WITH ARCHITECTURAL. FIT-UP DRAWINGS.

CONSISTENT NUMBER

44 Main Street
Portland, Maine 04101
Phone: 207-773-2800
Fax: 207-773-2800

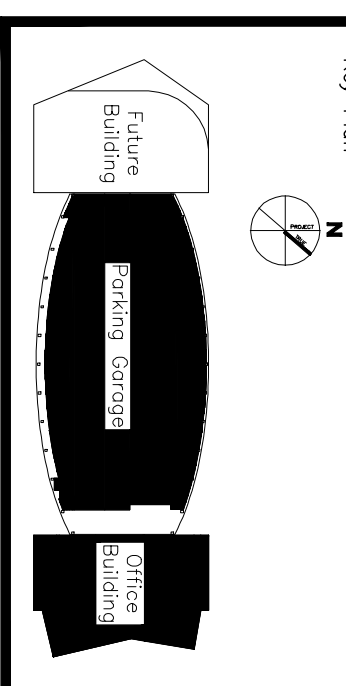
96 Cape Street, Suite 300
Portland, Maine 04101
Phone: 800-848-4423
Fax: 207-774-4433
Fax: 207-773-2807

HARRIMAN
Architects + Engineers

325 Middle Street
Portland, Maine 04101
Phone: 207-773-2800
Fax: 207-773-2807

Project Title:
BAYCO LLC.
BAYSIDE DEVELOPMENT
PORTLAND, MAINE
OFFICE BUILDING
CORE & SHELL

ME Project No.: 08576



| Mark | Date | Description |
|------|----------|---------------------------|
| - | 1.07.09 | SITE EMBALING PACKAGE |
| - | 12-19-08 | 90% SITE EMBALING PACKAGE |
| - | 11-07-08 | SCHEMATIC DESIGN |

Drawing Status:
**NOT FOR CONSTRUCTION -
SITE COORDINATION ONLY**

Drawing Title:
**ELECTRICAL
POWER & SYSTEMS
FIRST & SECOND FLOOR PLAN**

Pa. / Rev.: WGH
Drawn By: RJB

Drawing Number:
E20.1