

MARK MUELLER ARCHITECTS
A.I.A.
100 Commercial Street
Suite 205
Portland, Maine 04101
Phone: 207.774.9057
Email: rfi@muellerarchitects.com

© COPYRIGHT 2014
MARK MUELLER ARCHITECTS

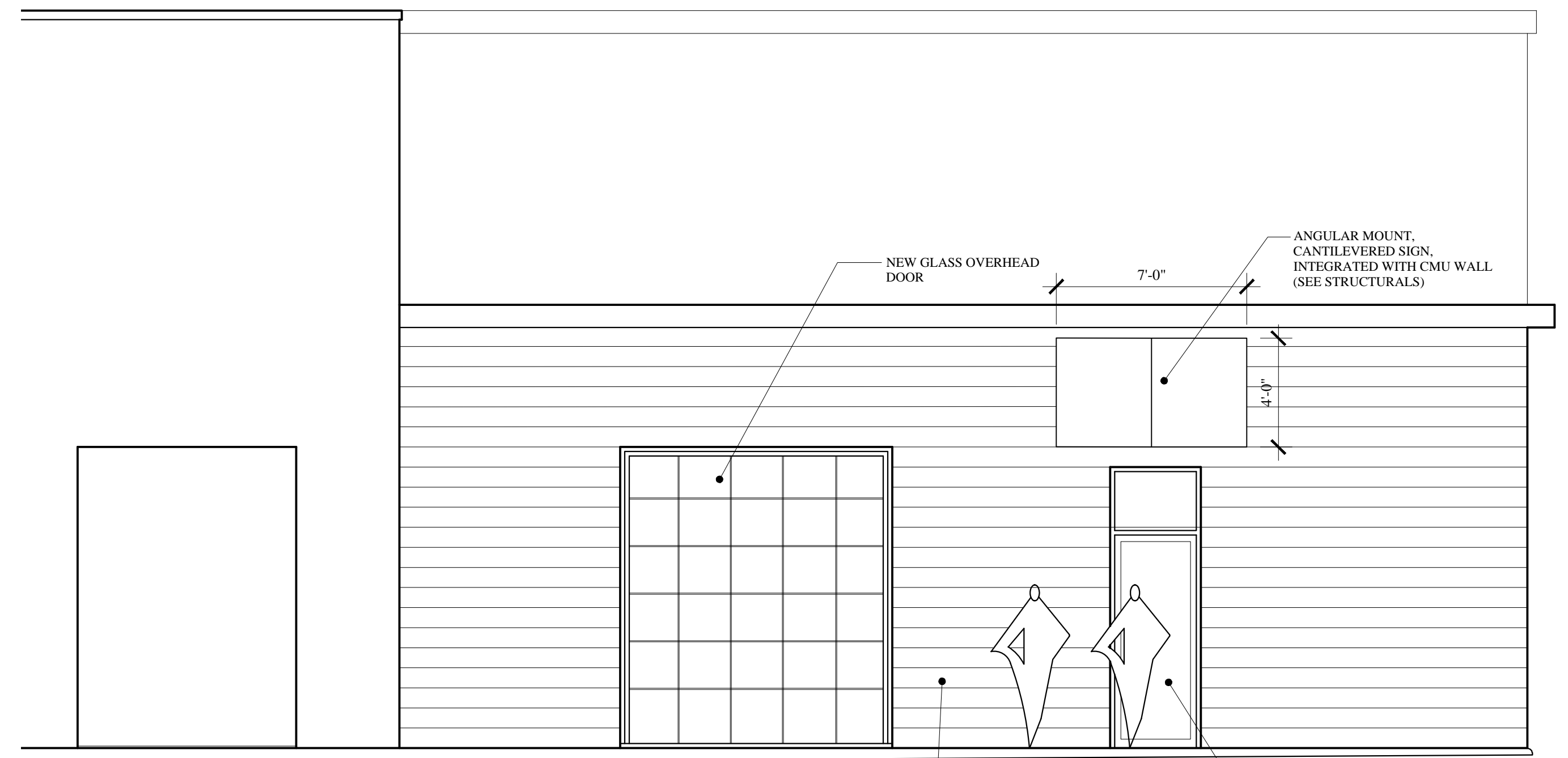
allspeed
ALLSPEED CYCLERY & SNOW LLC
127 MARGINAL WAY
PORTLAND, MAINE 04101

Interior Tenant Renovations:

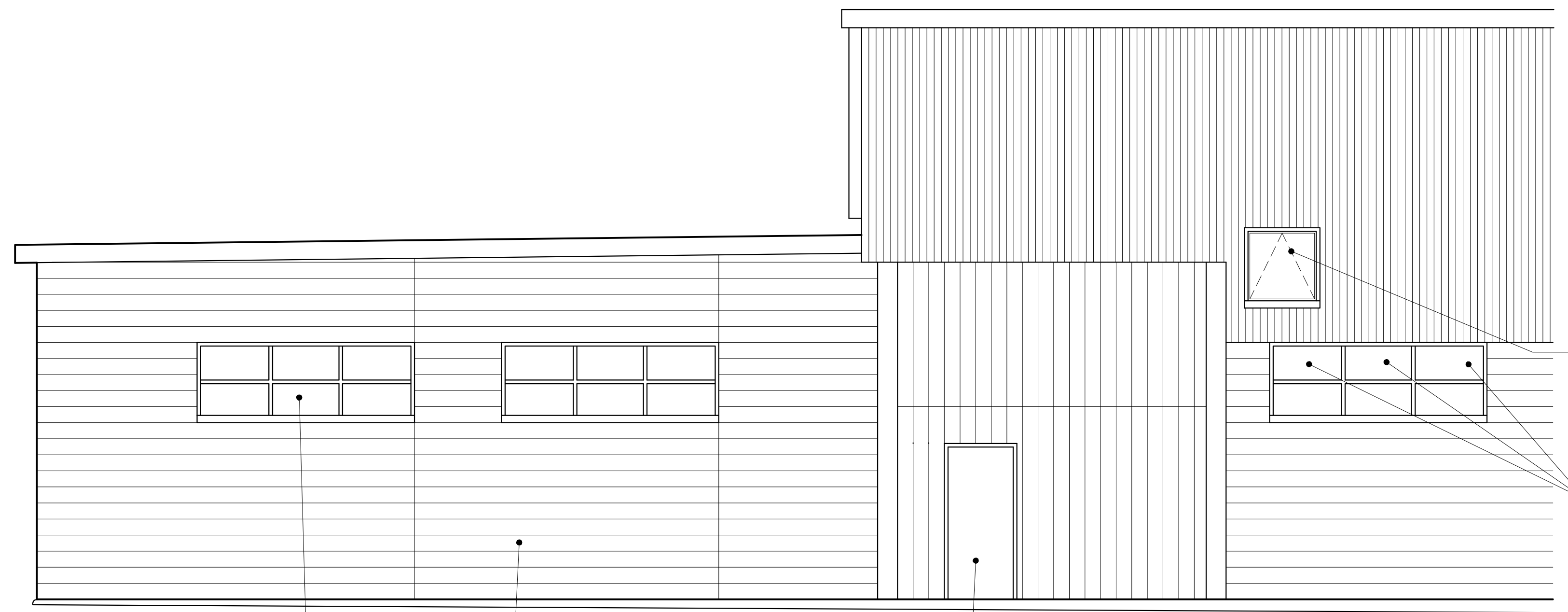
ELEVATIONS & SECTIONS

REVISIONS	DATE
	OCT. 14, 2014
PROJECT	ALLSPEED
DRAWN BY	MAM
CHECK BY	MAM

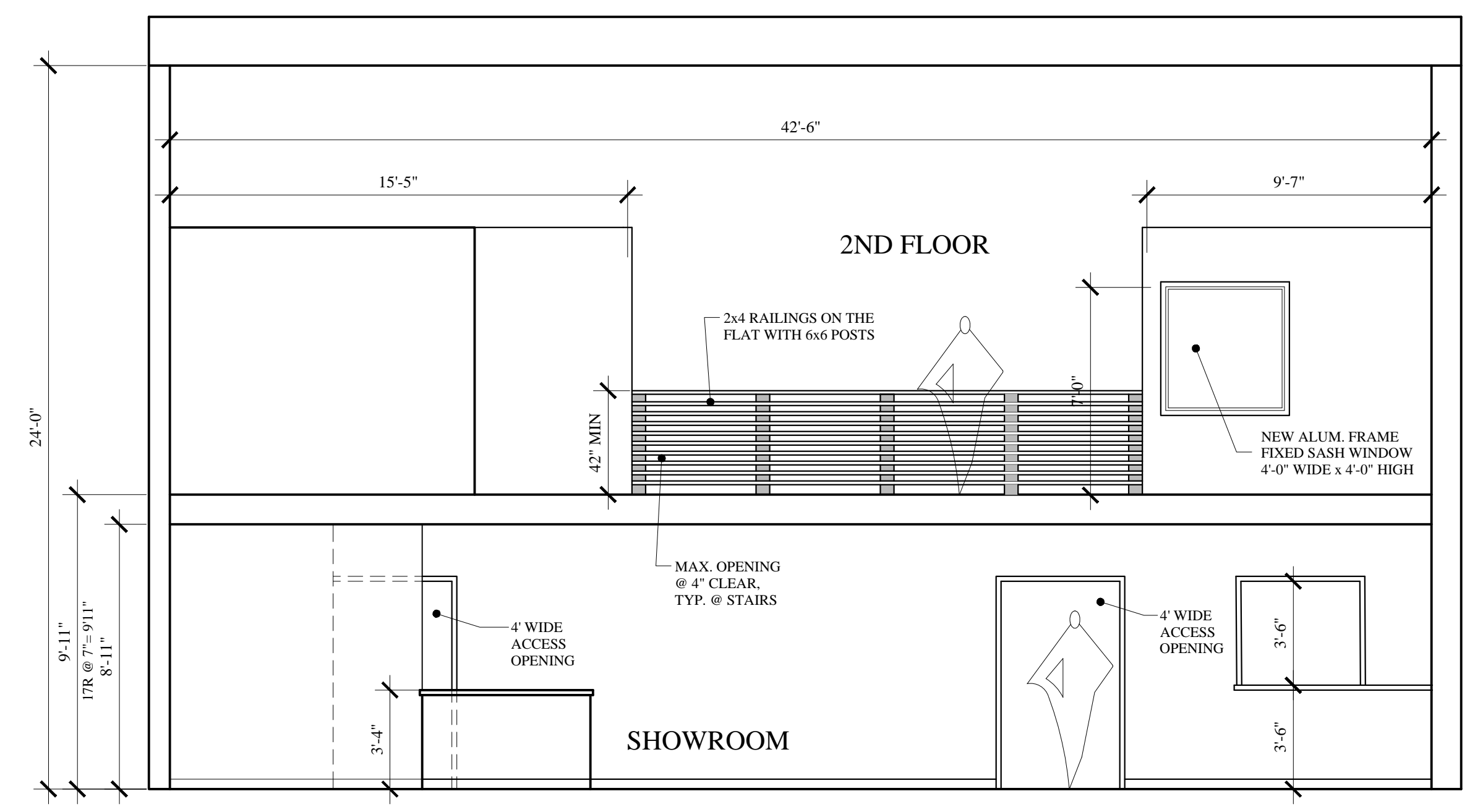
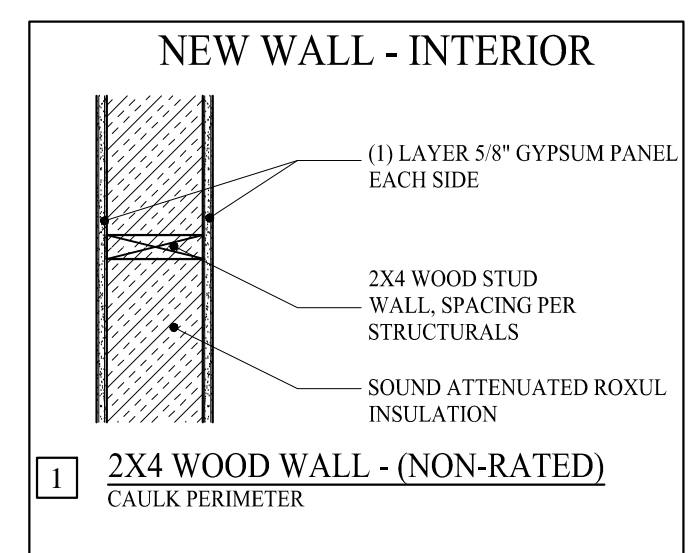
A1.2



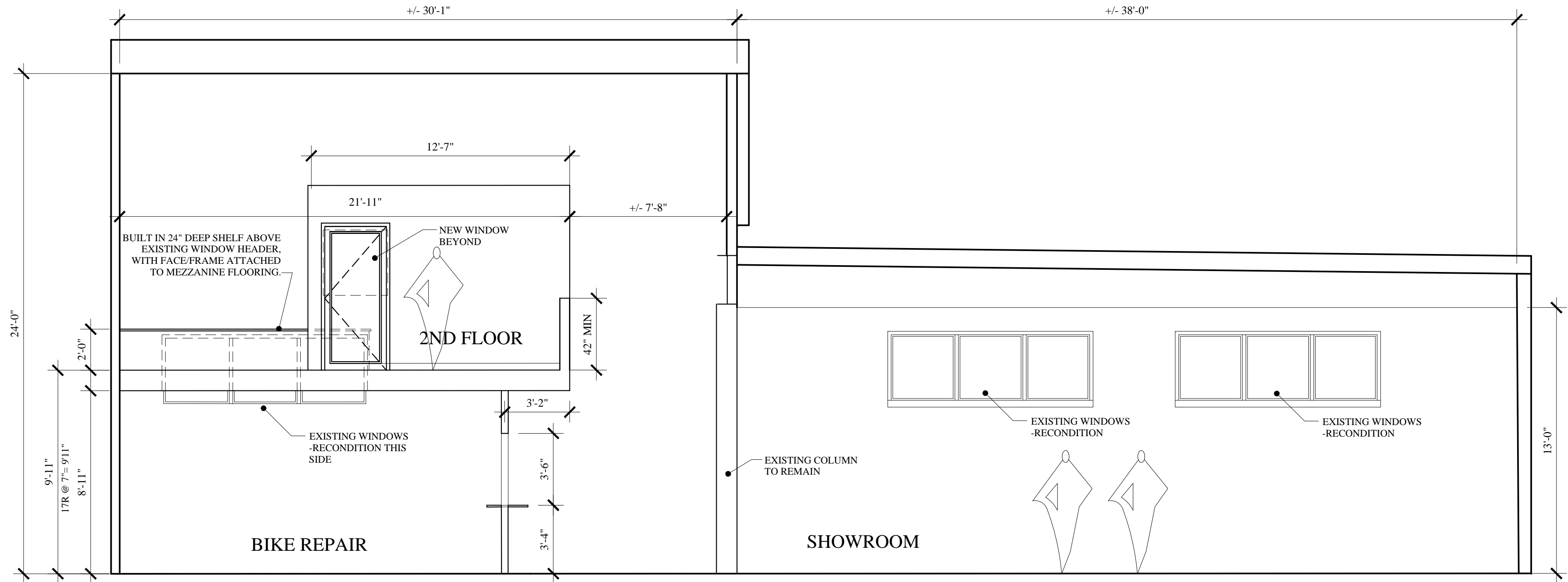
SOUTH ELEVATION
1/4" = 1'-0"



EAST ELEVATION
1/4" = 1'-0"



INTERIOR SECTION-SOUTH
1/4" = 1'-0"



INTERIOR SECTION-WEST
1/4" = 1'-0"

REVISED: FEBRUARY 06, 2015
PERMIT SET : DECEMBER 9, 2014