

**NOTES**

- ALL C/B/S AND DISCONNECT SWITCHES SHOWN ON THIS DRAWING ARE 3-POLE, UNLESS NOTED OTHERWISE.
- FINAL TIGHTENING OF LUGS AND BISSING SHALL BE TO MANUFACTURERS SPECIFICATIONS. USING A TORQUE WRENCH. REFER TO MANUFACTURERS GUIDELINES ARE NOT AVAILABLE, REFER TO NEC ARTICLE 110-14.
- BRON EQUIPMENT GROUND CONDUCTORS TO ALL FEEDER CONDUITS ENTERING ENCLOSURES USING GROUNDING BUSBARS EQUAL TO OZ. GENEY TYPE HELD.
- WHERE SPACE AND PROVISIONS FOR FUTURE CIRCUIT BREAKERS (ABBREVIATED SFP) ARE SHOWN IN PANELS AND SWITCHBOARDS, PROVIDE SPACE, BISSING, AND ALL REQUIRED HARDWARE TO MOUNT FUTURE BREAKERS.
- SWITCHBOARD GROUND BUS: PROVIDE MAIN BONDING JUMPER SIZED PER CODE REQUIREMENTS. PROVIDE #3/0 COPPER GREEN INSULATED GROUND CONDUCTOR IN 3/4" C FROM BUS TO BUILDING WATER AND FIRE SERVICE AHEAD OF METERS. PROVIDE #3/0 COPPER GREEN INSULATED GROUND CONDUCTOR IN 3/4" C FROM BUS TO BUILDING STEEL.
- MAIN SERVICE SWITCHBOARD SHALL BE FULLY RATED AT KAIC SHOW. ALL CIRCUIT BREAKERS IN THE SWITCHBOARD SHALL BE 100% RATED.
- PROVIDE 240V SHUNT TRIP OPERATOR AT EACH ELEVATOR CIRCUIT BREAKER. SUPERVISED SHUNT TRIP POWER SHALL BE PROVIDED BY THE FIRE ALARM SYSTEM.

**FEEDER SCHEDULE**

FEEDER	AMPERES	WIRE AND CONDUIT
1	1200A	3"-4" W/4#600KCMIL & 1#5/0C EACH
2	800A	2"-3" W/4#500KCMIL & 1#1/0C EACH
3	500A	2"-2 1/2" W/4#250KCMIL & 1#3/8C EACH
4	400A	4#600KCMIL & 1#3/8C, 4" C.
5	300A	4#500KCMIL & 1#4G, 3" C.
6	225A	4#4/0 & 1#4G, 2 1/2" C.
7	175A	4#2/0 & 1#6G, 2" C.
8	125A	4#1/0 & 1#6G, 2" C.

**GENERAL EQUIPMENT ELECTRICAL SCHEDULE**

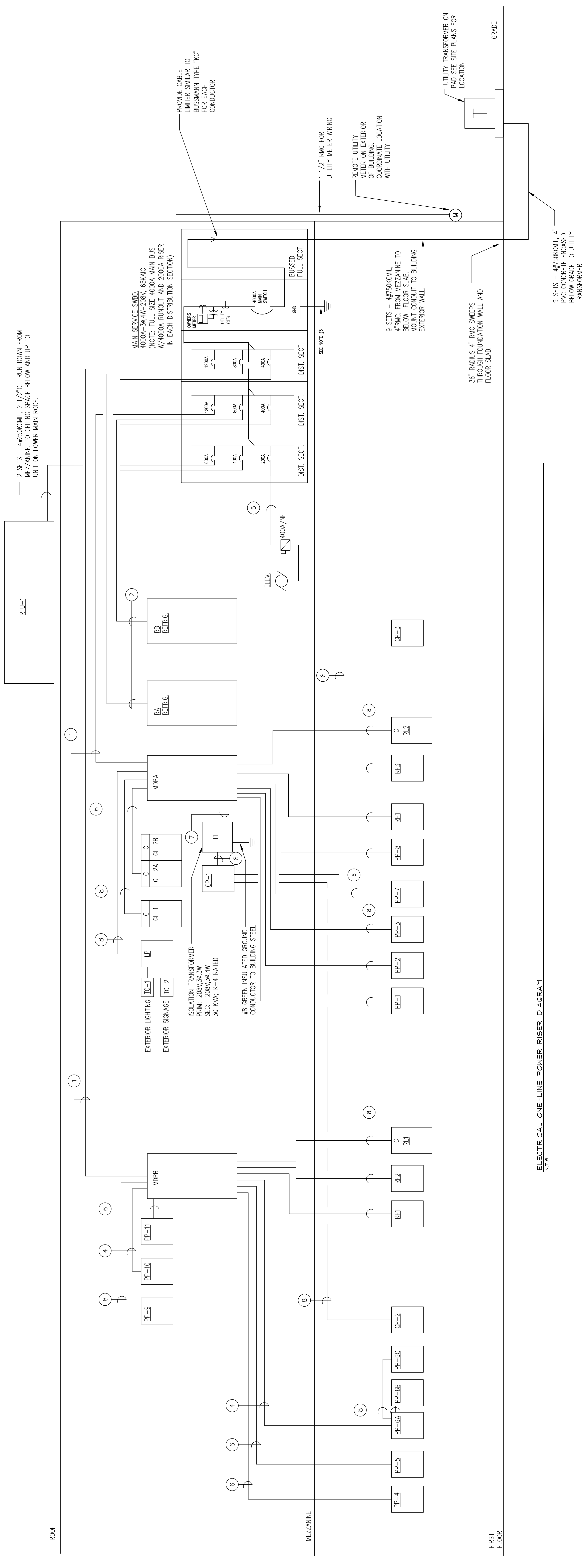
MARK	LOCATION / SERVICES	HP	KVA	VOLTS PH.	STARTER SIZE	CIRC. #	BREAKER	PANEL	WIRE/CONDUIT	DISCONNECT SW.
OP-1	CIRC. PUMP	1/8	120	1	00	31	20A-IP	PP-9	2 #12 + 1 #120 - 3/4" C.	30A/3/5A
OP-2	CIRC. PUMP	1/8	120	1	00	-	W/CP-1	-	2 #12 + 1 #120 - 3/4" C.	30A/3/5A
DBS	BALER	10	208	3	-	-	70A-3P	MDB	3 #4 + 1 #60 - 1" C.	60A/3/60A
DB1	COMPACTOR	10	208	3	-	-	70A-3P	MDB	3 #4 + 1 #60 - 1" C.	60A/3/60A
-	ELEVATOR	80	208	3	-	-	300A-3P	MDBA	4 #500KCMIL + 1 #4G - 2" C.	-
OH-1	LOADING DOOR	1	208	3	-	16,18,20	20A-3P	PP-8	3 #12 + 1 #120 - 3/4" C.	30A/3/5A
OH-2	LOADING DOOR	1	208	3	-	21,22,25	20A-3P	PP-8	3 #12 + 1 #120 - 3/4" C.	30A/3/5A
DL-1	DOCK LEVELER	120	1	-	22	-	20A-IP	PP-8	2 #12 + 1 #120 - 3/4" C.	-
DL-2	DOCK LEVELER	120	1	-	24	-	20A-IP	PP-8	2 #12 + 1 #120 - 3/4" C.	-

**GENERAL EQUIPMENT ELECTRICAL SCHEDULE**

MARK	LOCATION / SERVICES	HP	KVA	VOLTS PH.	STARTER SIZE	CIRC. #	BREAKER	PANEL	WIRE/CONDUIT	DISCONNECT SW.
EF-1	1ST FLOOR	1/4	120	1	-	30	20A-IP	PP-AB	2 #12 + 1 #120 - 3/4" C.	INTEGRAL BY DIV. 15
EF-2	CONFERENCE	1/6	120	1	-	34	20A-IP	PP-10	2 #12 + 1 #120 - 3/4" C.	INTEGRAL BY DIV. 15
EF-3	STON MAKER	120W	120	1	-	7	20A-IP	PP-3	2 #12 + 1 #120 - 3/4" C.	INTEGRAL BY DIV. 15
EF-4	WOMENS 216	81W	120	1	-	17	20A-IP	PP-9	2 #12 + 1 #120 - 3/4" C.	INTEGRAL BY DIV. 15
EF-5	WOMENS 217	81W	120	1	-	13	20A-IP	PP-9	2 #12 + 1 #120 - 3/4" C.	INTEGRAL BY DIV. 15
EF-6	LOUNGE	135W	120	1	-	19	20A-IP	PP-9	2 #12 + 1 #120 - 3/4" C.	INTEGRAL BY DIV. 15
EF-7	ELEC. ROOM	1/6	120	1	-	19	20A-IP	PP-9	2 #12 + 1 #120 - 3/4" C.	INTEGRAL BY DIV. 15
EF-8	REFRIGERATION	3	208	3	0	29,31,33	25A-3P	PP-10	3 #10 + 1 #120 - 3/4" C.	30A/3/5A
MEF-1	HOOD H-6A	1	208	3	00	6,10,12	20A-3P	PP-6C	3 #12 + 1 #120 - 3/4" C.	30A/3/5A
MEF-1A	HOOD H-6M	1 1/2	208	3	00	13,15,17	20A-3P	PP-6C	3 #12 + 1 #120 - 3/4" C.	30A/3/5A
MEF-1B	HOOD H-6R	3/4	208	3	00	14,16,18	20A-3P	PP-6C	3 #12 + 1 #120 - 3/4" C.	30A/3/5A
MEF-2	HOOD H-2	1/2	208	3	00	37,39,41	20A-3P	PP-6C	3 #12 + 1 #120 - 3/4" C.	30A/3/5A
MEF-3	HOOD H-3	3/4	208	3	00	34,36,38	20A-3P	PP-2	3 #12 + 1 #120 - 3/4" C.	30A/3/4.5A
MEF-4	HOOD H-4	3/4	208	3	00	32,34,36	20A-3P	PP-6C	3 #12 + 1 #120 - 3/4" C.	30A/3/4.5A
MEF-5	HOOD H-5.5A	1/3	120	1	0	19	20A-IP	PP-6C	2 #12 + 1 #120 - 3/4" C.	30A/1/9A
MEF-6	HOOD H-6	1 1/2	208	3	00	20,22,24	20A-3P	PP-6C	3 #12 + 1 #120 - 3/4" C.	30A/3/5A
MEF-6A	HOOD H-6A	1/2	208	3	00	25,27,29	20A-3P	PP-6C	3 #12 + 1 #120 - 3/4" C.	30A/3/5A
MEF-7	HOOD H-7	1 1/2	208	3	00	26,28,30	20A-3P	PP-6C	3 #12 + 1 #120 - 3/4" C.	30A/3/5A
MEF-8	HOOD H-8	1/2	208	3	00	27,29,31	20A-3P	PP-7	3 #12 + 1 #120 - 3/4" C.	30A/1/7.5A
AC-1	VESTIBULE 101	75	-	208	1	4,6	20A-2P	PP-8	2 #12 + 1 #120 - 3/4" C.	-
AC-2	VESTIBULE 101	75	-	208	1	5,7	20A-2P	PP-8	2 #12 + 1 #120 - 3/4" C.	-
AC-3	SEATING 119	75	-	208	1	8,10	20A-2P	PP-8	3 #12 + 1 #120 - 3/4" C.	-
AC-4	RECEIVING 101	5	-	208	3	9,11,12,14	20A-3P	PP-8	3 #12 + 1 #120 - 3/4" C.	-
EMH-1	MENS 216	4	208	3	00	21,23,25	20A-3P	PP-9	3 #12 + 1 #120 - 3/4" C.	INTEGRAL BY DIV. 15
EMH-2	MENS 213	4	208	3	00	22,24,26	20A-3P	PP-9	3 #12 + 1 #120 - 3/4" C.	INTEGRAL BY DIV. 15
EMH-3	WOMENS 105	4	208	3	00	27,29,31	20A-3P	PP-6B	3 #12 + 1 #120 - 3/4" C.	INTEGRAL BY DIV. 15
EMH-4	STAIR 136	4	208	3	00	15,17,19	20A-3P	PP-8	3 #12 + 1 #120 - 3/4" C.	INTEGRAL BY DIV. 15
EH-1	ELEC. 211	5	208	3	00	26,30,32	20A-3P	PP-10	3 #12 + 1 #120 - 3/4" C.	30A/3/2.5A
EH-2	WATER 138	5	208	3	00	31,33,35	20A-3P	PP-6C	3 #12 + 1 #120 - 3/4" C.	30A/3/2.5A
OUH-1	RECEIVING 101	1/4	120	1	-	13	20A-IP	PP-8	2 #12 + 1 #120 - 3/4" C.	30A/0.9A

**GENERAL EQUIPMENT ELECTRICAL SCHEDULE**

MARK	LOCATION / SERVICES	HP	KVA	VOLTS PH.	STARTER SIZE	CIRC. #	BREAKER	PANEL	WIRE/CONDUIT	DISCONNECT SW.
RTU-1	SEASONS 4	208	3	-	-	-	500A-3P	MAN SHED	SEE RISER DIAGRAM	600A/3/500A
RTU-2	AIR ENTRANCE	38.5	208	3	-	1,3,5	150A-3P	PP-10	3 #1/0 + 1 #60 - 3/4" C.	200A/3/150A
RTU-3	VESTIBULE	10.4	208	3	-	2,4,6	30A-3P	PP-10	3 #8 + 1 #100 - 3/4" C.	60A/3/35A
RTU-4	SEATING AREA 1	21.8	208	3	-	7,9,11	70A-3P	PP-10	3 #4 + 1 #60 - 1 1/2" C.	100A/3/70A
RTU-5	SEATING AREA 2	13.7	208	3	-	8,10,12	40A-3P	PP-10	3 #4 + 1 #100 - 3/4" C.	60A/3/40A
RTU-6	KITCHEN	40.7	208	3	-	13,15,17	150A-3P	PP-10	3 #1/0 + 1 #60 - 3/4" C.	200A/3/150A
MUA-1	HOOD H1A,1B	5	6.3	208	3	1	30A-3P	PP-6C	3 #10 + 1 #100 - 3/4" C.	30A/3/25A
MUA-2	HOOD H7	1.5	2.5	208	3	00	2,4,6	20A-3P	2 #12 + 1 #120 - 3/4" C.	30A/3/25A
MUA-3	HOOD H6	1.5	2.5	208	3	00	7,9,11	20A-3P	3 #12 + 1 #120 - 3/4" C.	30A/3/25A
A/C-1	ELEV. MACH.	208	1	-	-	-	-	-	2 #12 + 1 #120 - 3/4" C.	WITH CU-1
CU-1	CONDENSER	3.9	208	1	-	14,16	30A-2P	PP-10	2 #10 + 1 #100 - 3/4" C.	30A/0.9A
A/C-2	I.S. ROOM	208	1	-	-	-	-	-	2 #12 + 1 #120 - 3/4" C.	WITH CU-2
CU-2	CONDENSER	2.3	208	1	-	19,21	20A-2P	PP-10	2 #12 + 1 #120 - 3/4" C.	30A/0.9A
A/C-3	BEER/WINE	208	1	-	-	-	-	-	2 #12 + 1 #120 - 3/4" C.	WITH CU-3
CU-3	CONDENSER	2.3	208	1	-	18,20	20A-2P	PP-10	2 #12 + 1 #120 - 3/4" C.	30A/0.9A
AHU-1	EQUIP. BUFR	1/5	120	1	-	18	20A-IP	PP-11	2 #12 + 1 #120 - 3/4" C.	30A/3/20A
CONB-1	CONDENSER	5.9	208	1	-	1,3	30A-2P	PP-11	2 #10 + 1 #100 - 3/4" C.	30A/3/20A
CONB-2	CONDENSER	1/5	120	1	-	18	20A-IP	PP-11	2 #12 + 1 #120 - 3/4" C.	30A/3/20A
CONB-3	CONDENSER	3.4	208	1	-	2,4	20A-2P	PP-11	2 #12 + 1 #120 - 3/4" C.	30A/3/20A
AHU-3	T.L. OFFICE	1/2	120	1	-	20	20A-IP	PP-11	2 #12 + 1 #120 - 3/4" C.	30A/3/20A
CONB-3	CONDENSER	5.4	208	1	-	5,7	30A-2P	PP-11	2 #10 + 1 #100 - 3/4" C.	30A/3/20A
AHU-4	LOUNGE	1/2	120	1	-	21	20A-IP	PP-11	2 #12 + 1 #120 - 3/4" C.	30A/3/20A
CONB-4	CONDENSER	3.9	208	1	-	6,8	20A-2P	PP-11	2 #12 + 1 #120 - 3/4" C.	30A/3/20A
AHU-5	STOCK	1/3	120	1	-	22	20A-IP	PP-11	2 #12 + 1 #120 - 3/4" C.	30A/3/20A
CONB-5	CONDENSER	2.4	208	1	-	13,15	30A-2P	PP-11	2 #12 + 1 #120 - 3/4" C.	30A/3/20A
AHU-6	RECEIVING	1/5	120	1	-	22	20A-IP	PP-11	2 #12 + 1 #120 - 3/4" C.	30A/3/20A
CONB-6	CONDENSER	3.4	208	1	-	10,12	20A-2P	PP-11	2 #12 + 1 #120 - 3/4" C.	30A/3/20A
AHU-7	BACKSTOCK	1/2	120	1	-	1	20A-IP	PP-8	2 #12 + 1 #120 - 3/4" C.	30A/3/20A
CONB-7	CONDENSER	5.4	208	1	-	13,15	30A-2P	PP-11	2 #10 + 1 #100 - 3/4" C.	30A/3/20A
AHU-8	BACKSTOCK	1/2	120	1	-	2	20A-IP	PP-8	2 #12 + 1 #120 - 3/4" C.	30A/3/20A
CONB-8	CONDENSER	5.4	208	1	-	14,16	30A-2P	PP-11	2 #10 + 1 #100 - 3/4" C.	30A/3/20A
AHU-9	RECEIVING	1/2	120	1	-	3	20A-IP	PP-8	2 #12 + 1 #120 - 3/4" C.	30A/3/20A
CONB-9	CONDENSER	5.4	208	1	-	17,19	30A-2P	PP-11	2 #10 + 1 #100 - 3/4" C.	30A/3/20A



ELECTRICAL ONE-LINE POWER RISER DIAGRAM