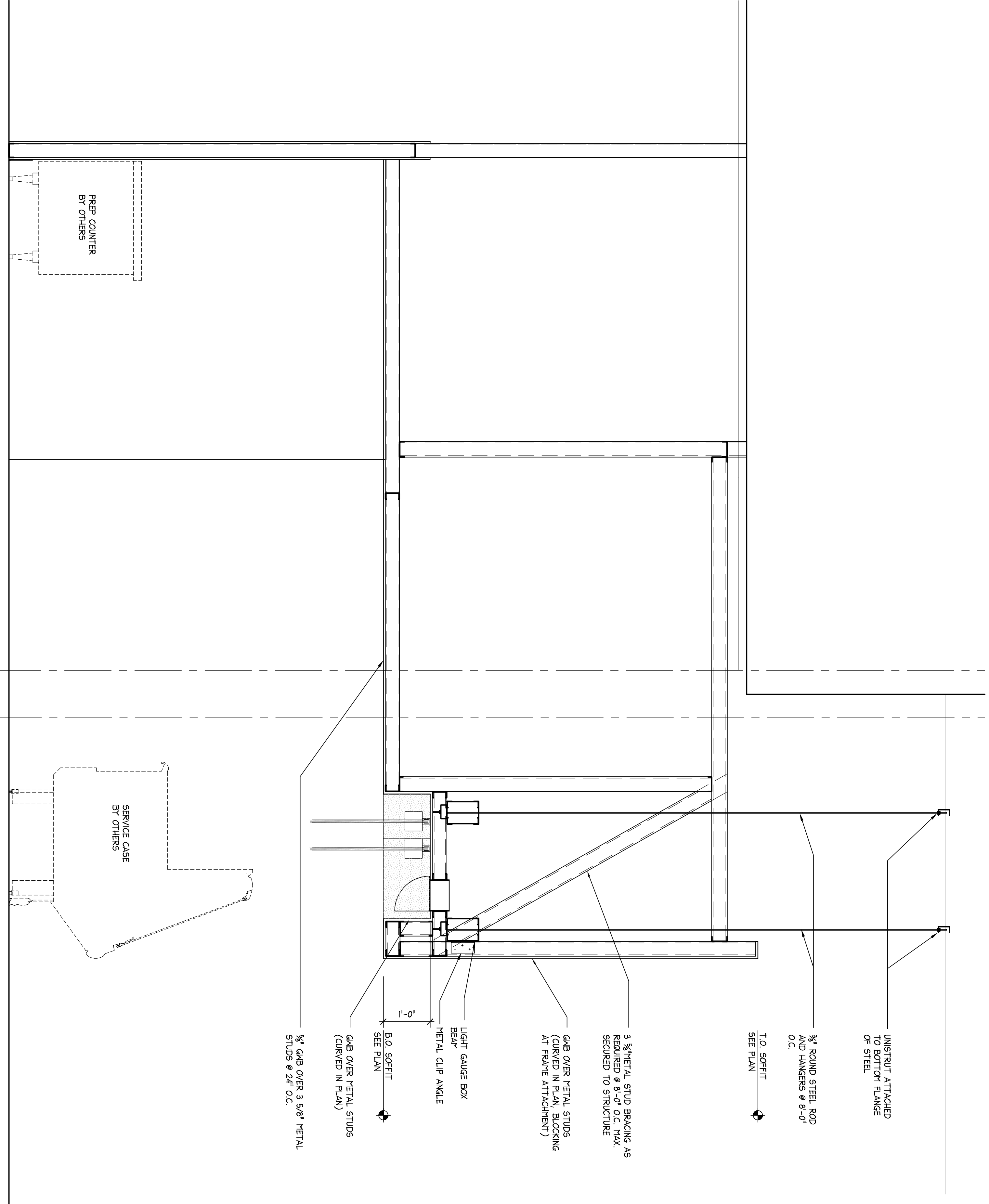
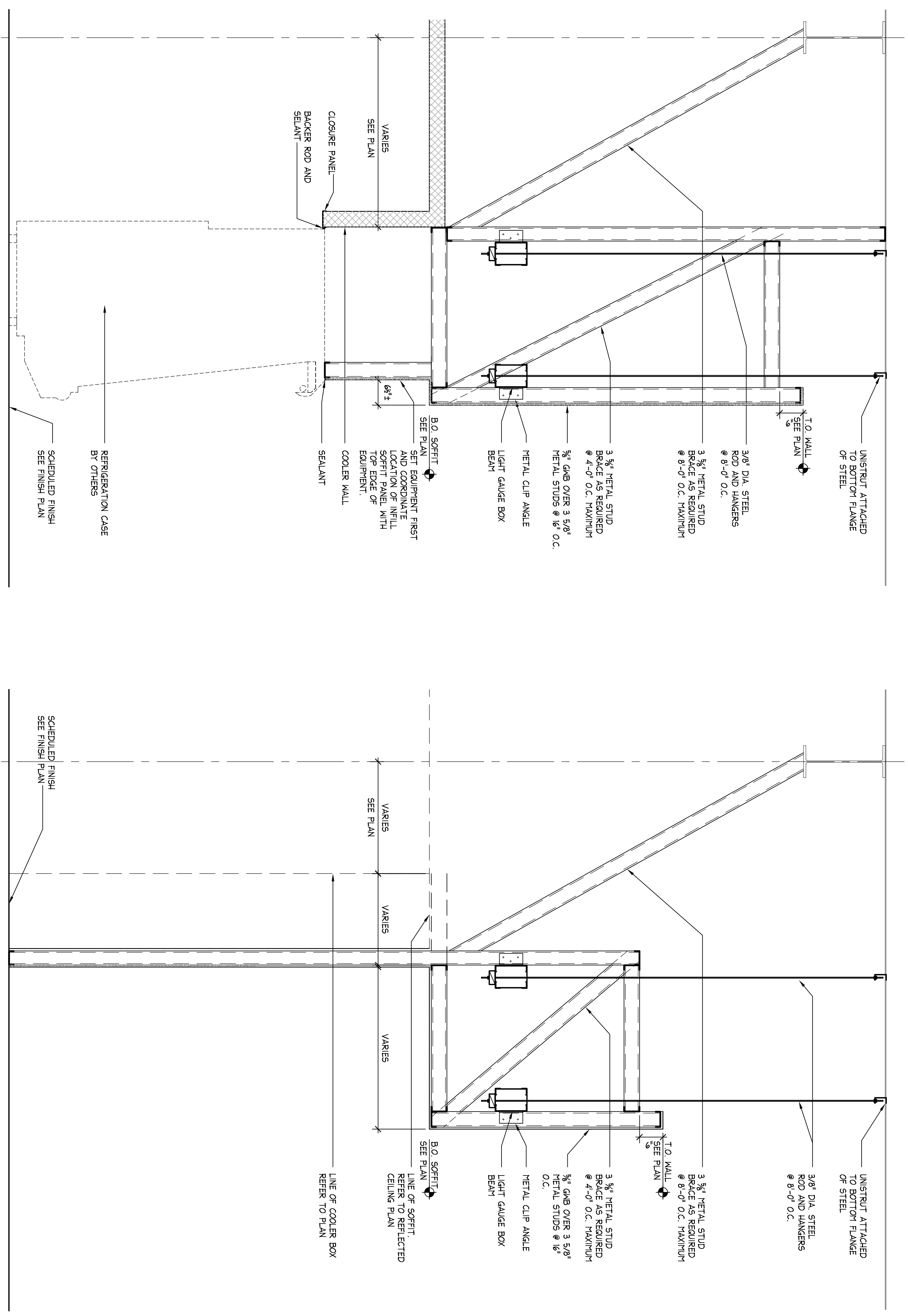


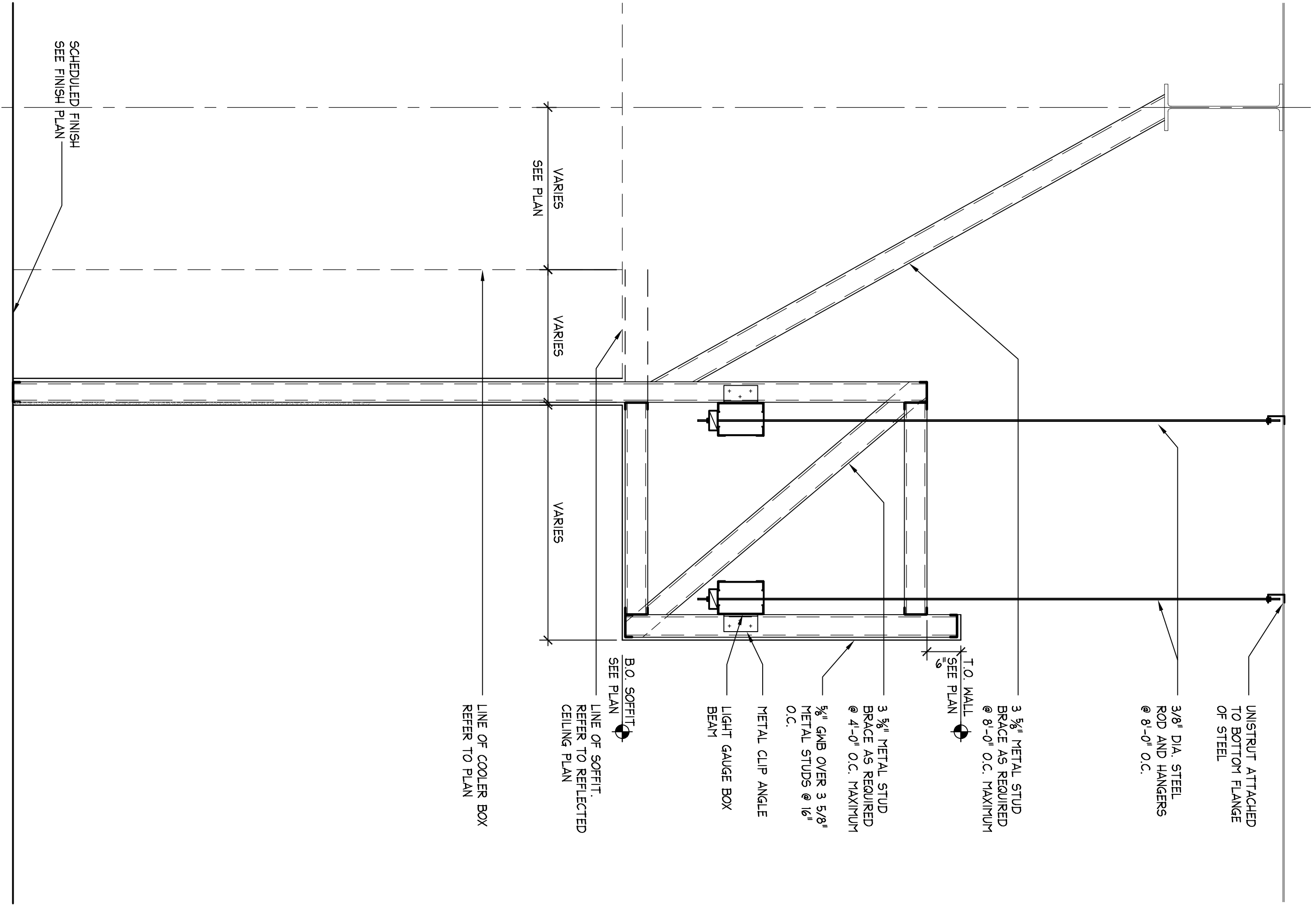
4 SOFFIT SECTION
SYM-T-1-3



3 SOFFIT SECTION
SYM-T-1-3



2 SOFFIT SECTION
SYM-T-1-3



1 SOFFIT SECTION
SYM-T-1-3

ISSUED FOR
CONSTRUCTION

COMPANIES
ARCHITECTURE
PLANNING
LANDSCAPE ARCHITECTURE
ENVIRONMENTAL SCIENCES
INTERIOR DESIGN

WHOLE FOODS

300 Riverport Parkway
Portland, ME 04103
Tel: 207.761.1400
Fax: 207.761.1401

PROPOSED GROCERY STORE
2 SOMERSET STREET
PORTLAND, CUMBERLAND COUNTY, MAINE

No.	Date	Desc.

REVISIONS	Date	Desc.

DESIGNED	DATE	BY

PROJECT	NO.	DATE

SCALE	DATE	BY

PROJECT	NO.	DATE

SCALE	DATE	BY

A4.09