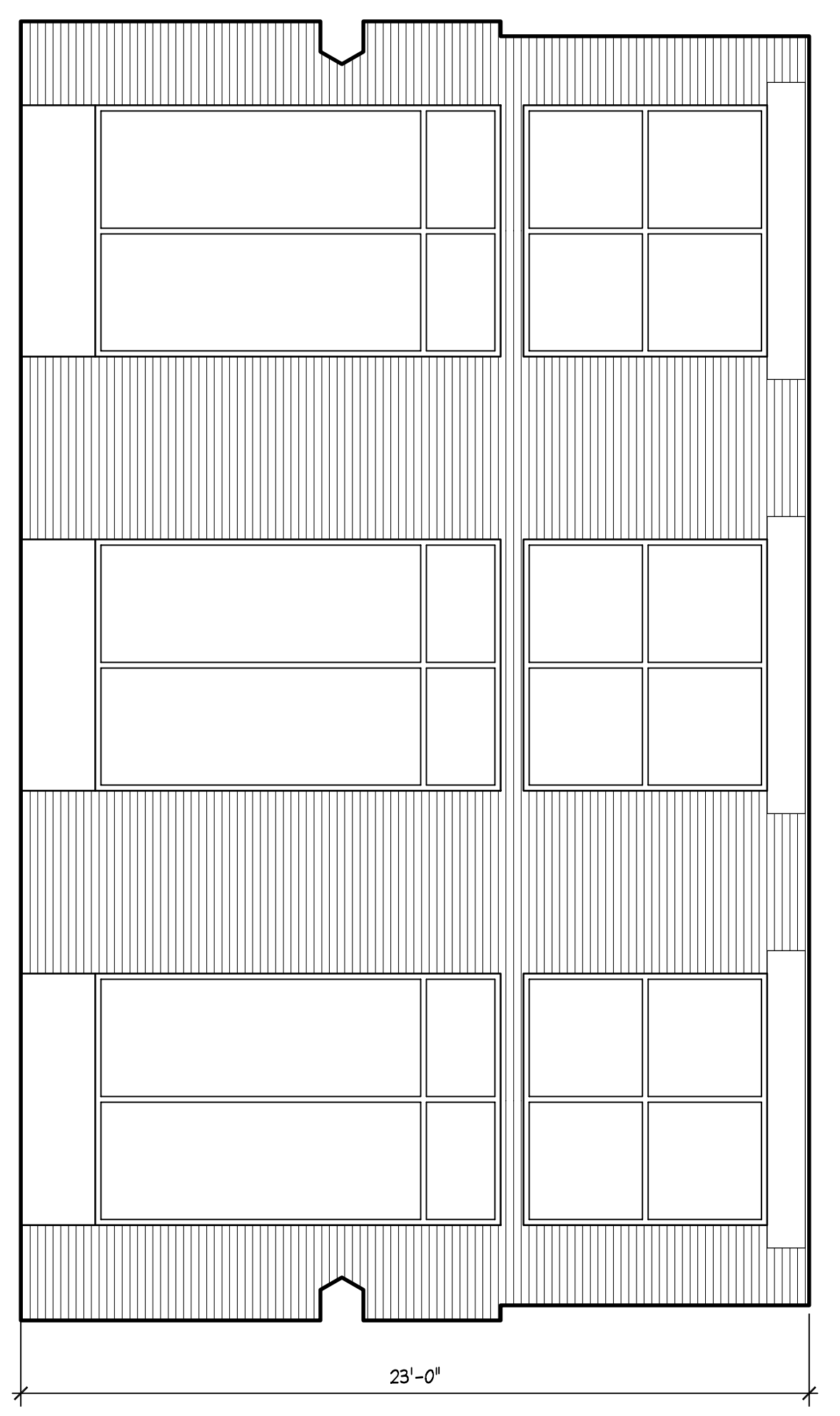
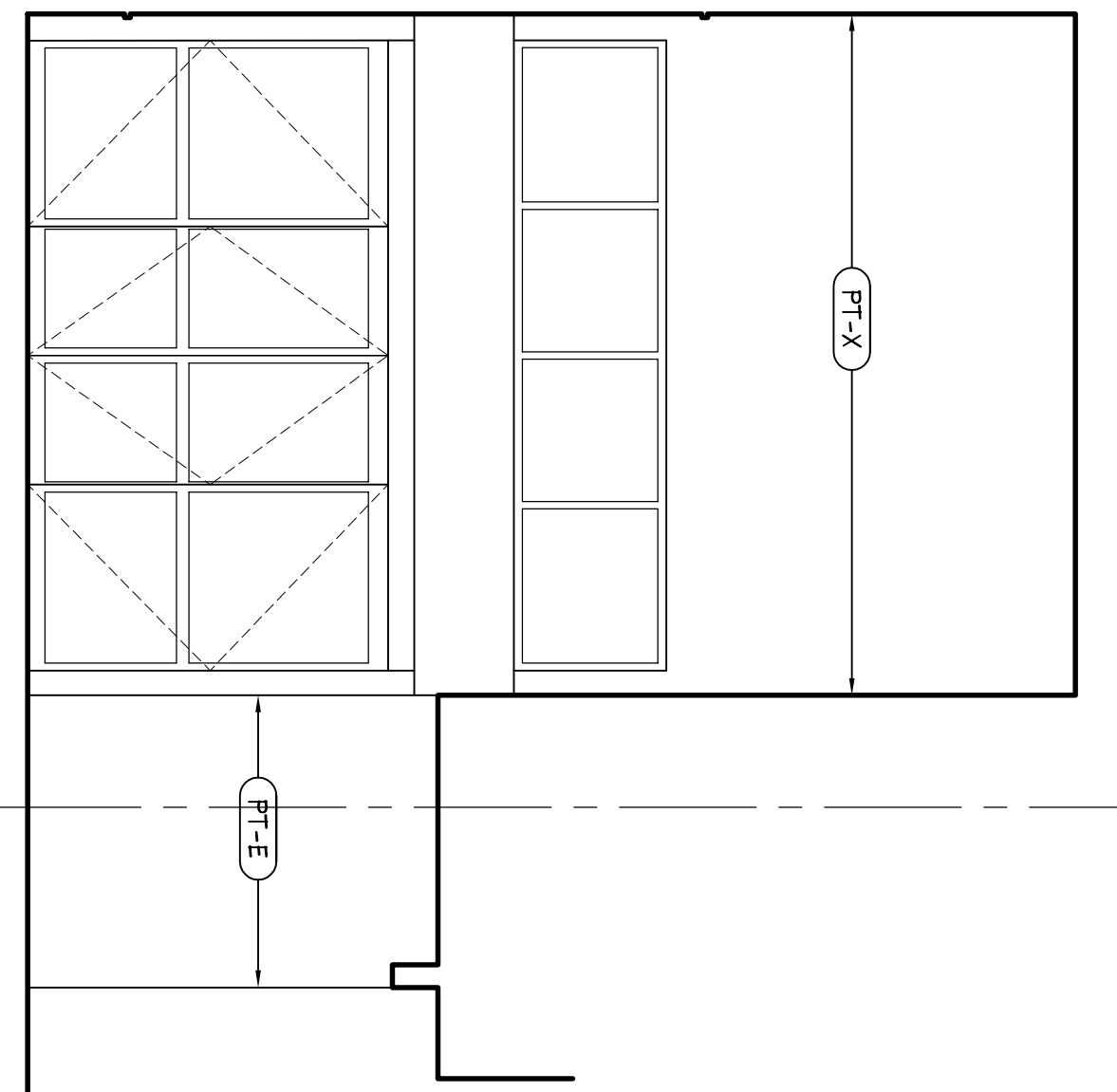


THIS DRAWING SHALL NOT BE UTILIZED BY ANY PERSON, PART OR CORPORATION WITHOUT THE SPECIFIC WRITTEN PERMISSION OF THE COMPANY.

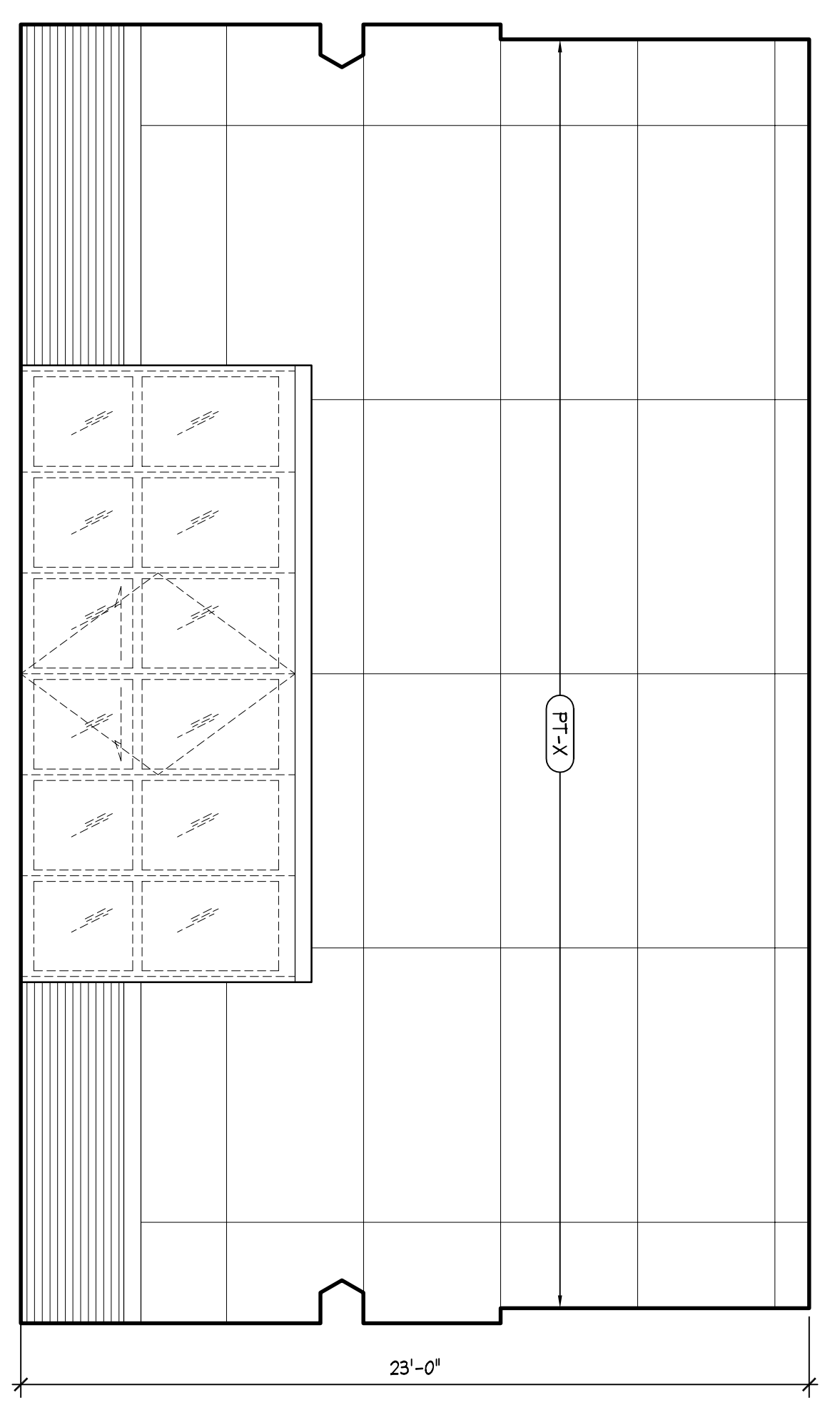
1 PARTIAL SOUTH INTERIOR ELEVATION
1/4" = 1'-0"



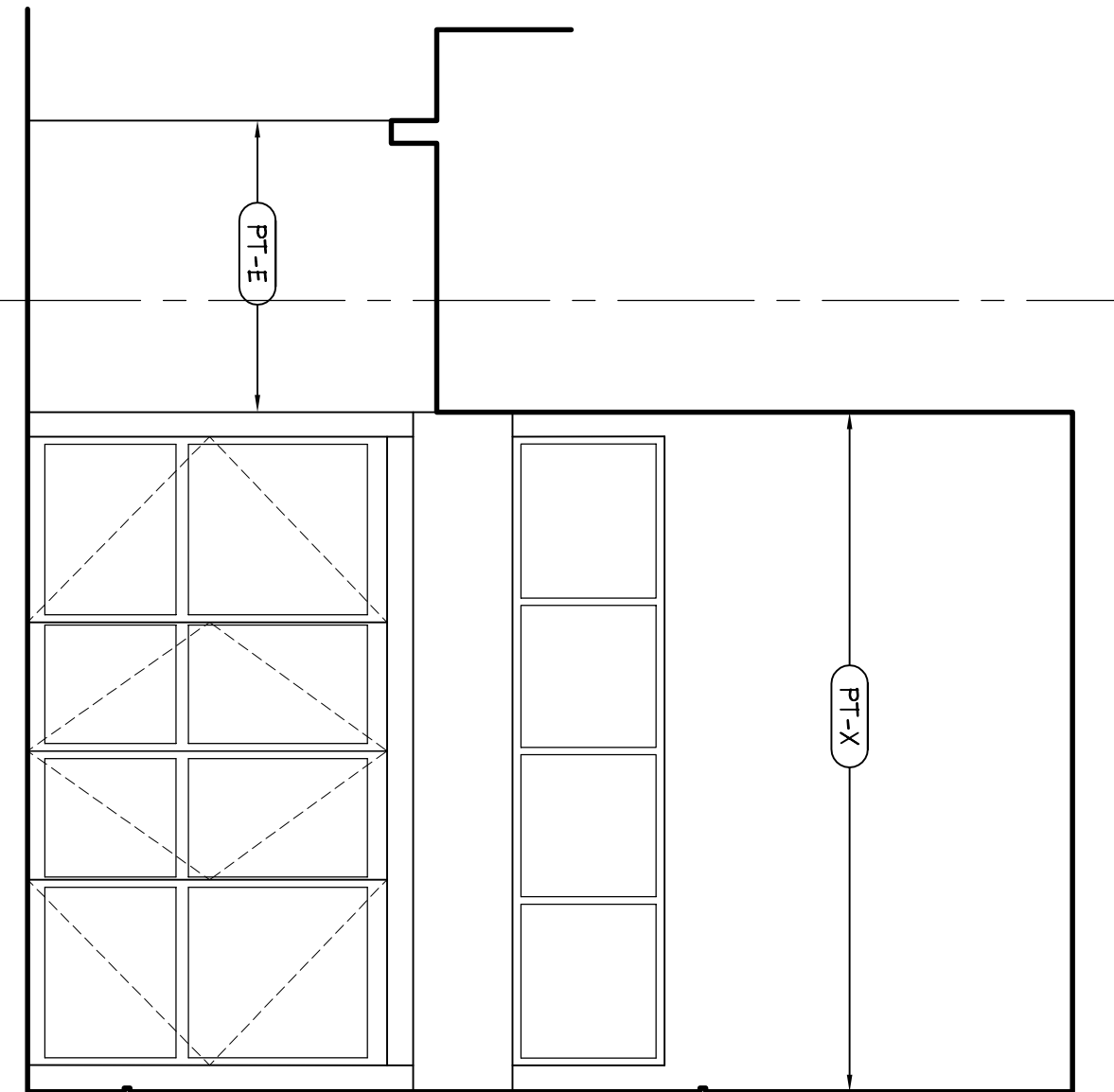
2 PARTIAL EAST INTERIOR ELEVATION
1/4" = 1'-0"



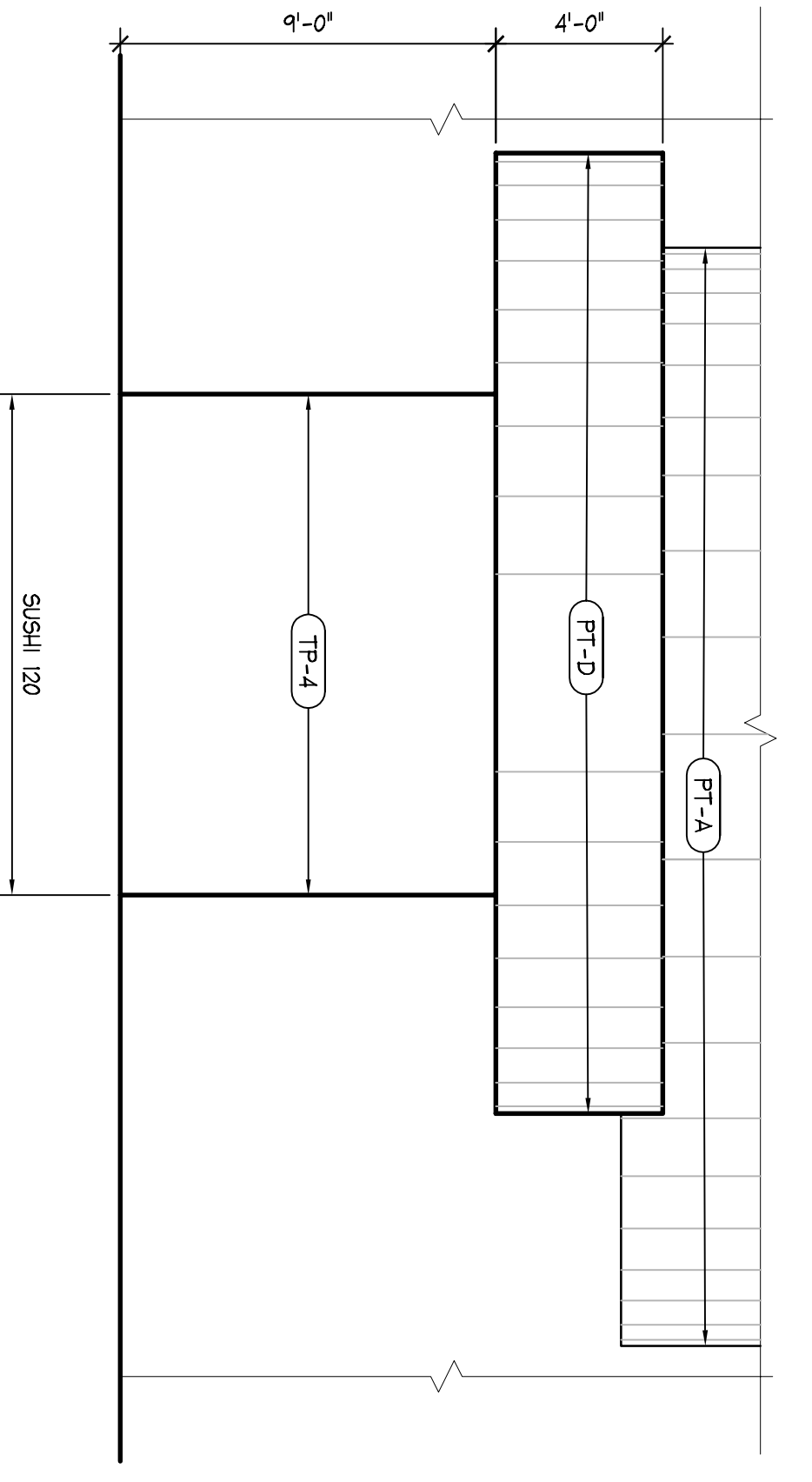
3 PARTIAL NORTH INTERIOR ELEVATION
1/4" = 1'-0"



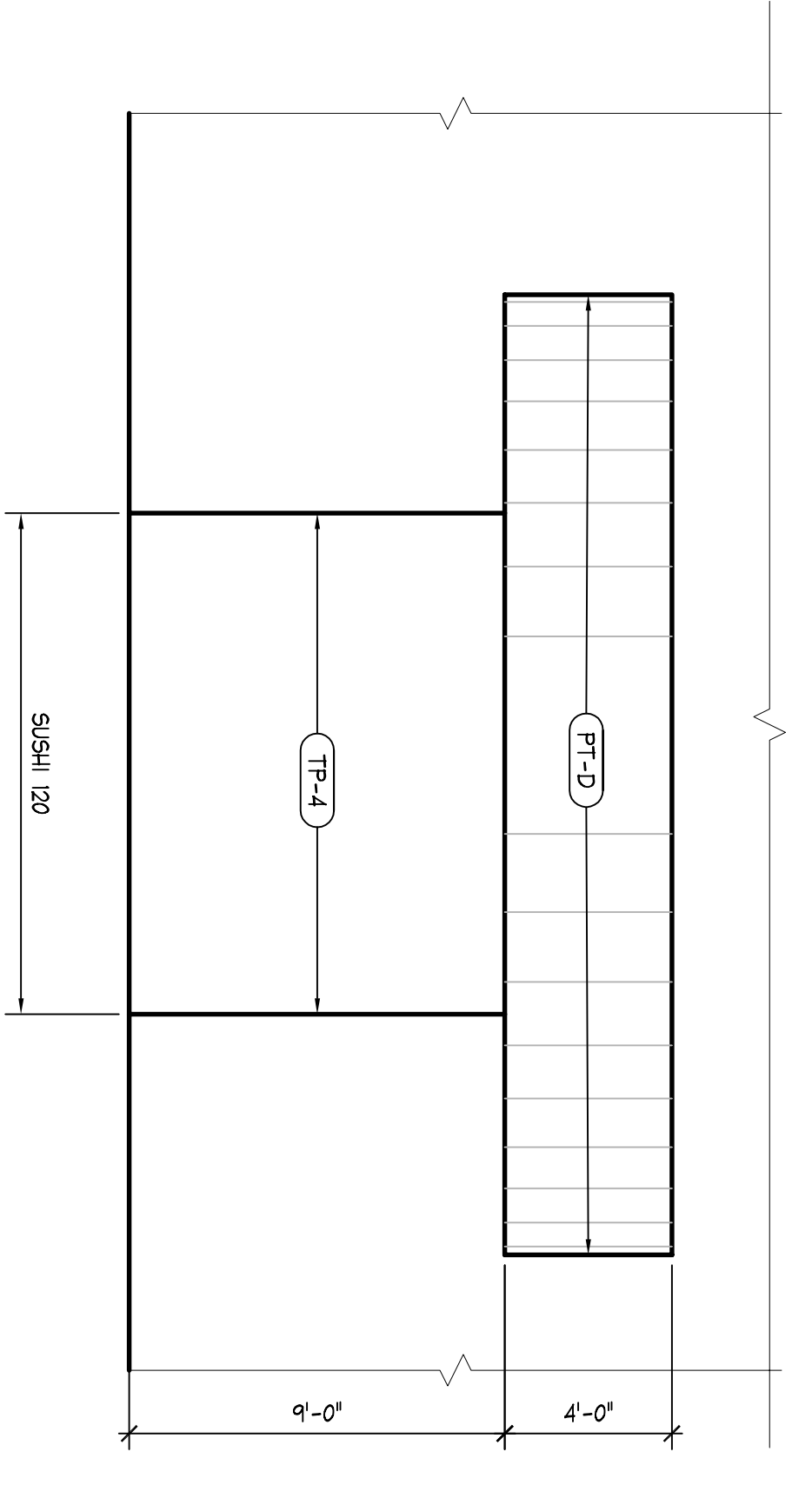
4 PARTIAL WEST INTERIOR ELEVATION
1/4" = 1'-0"



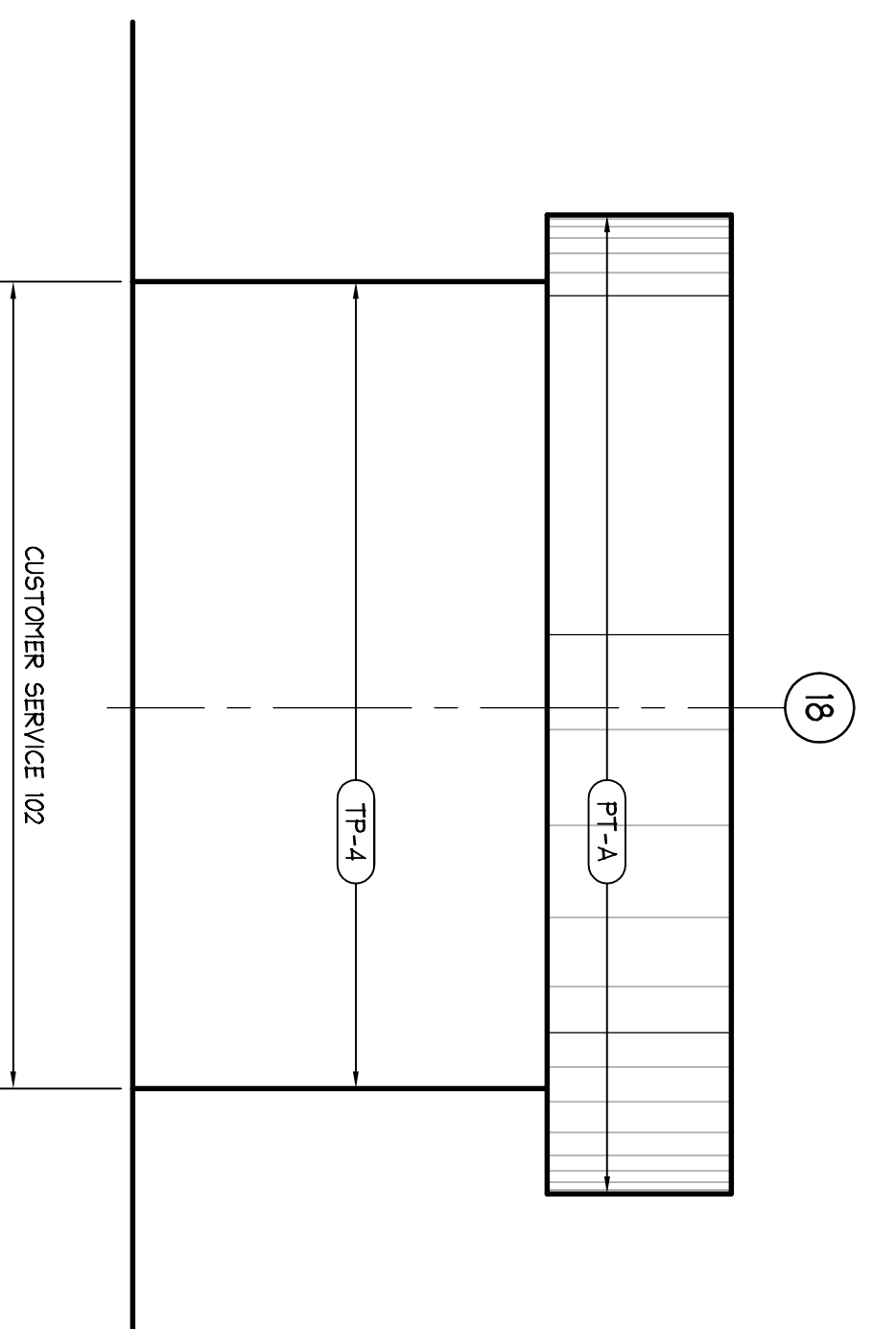
5 PARTIAL EAST INTERIOR ELEVATION
1/4" = 1'-0"



6 PARTIAL WEST INTERIOR ELEVATION
1/4" = 1'-0"



7 PARTIAL NORTH INTERIOR ELEVATION
1/4" = 1'-0"



Sheet No.	Project No.	Scale	Date	Author	Check	Appr.
A4.08	AS NOTED	AS NOTED	04/26/06	GAC		

No.	Date	Desc.

PROPOSED GROCERY STORE
2 SOMERSET STREET
PORTLAND, CUMBERLAND COUNTY, MAINE

ISSUED FOR
CONSTRUCTION