

BUILDING CODE

APPLICABLE CODES AND REGULATIONS ARE CURRENTLY THE FOLLOWING CODES AND REGULATIONS PER CHAPTER 11-A BUILDING PERMIT FOR THIS FACILITY:

- 2003 INTERNATIONAL BUILDING CODE
2003 INTERNATIONAL FIRE ALARM AND SIGNALING CODE
2003 NATIONAL ELECTRICAL CODE
2005 NATIONAL FIRE PROTECTION ASSOCIATION (NFPA) 101 - 2003

USE GROUP CLASSIFICATION: MERCANTILE OCCUPANCY (SECTION 903)

CONSTRUCTION CLASSIFICATION: III - NON-COMBUSTIBLE SECTION 903.2

SEISMIC DESIGN DATA: SEISMIC DESIGN CATEGORY: D SEE STRUCTURAL DRAWINGS FOR ADDITIONAL SEISMIC DESIGN DATA.

FIRE SUPPRESSION SYSTEM: BUILDING SHALL BE FULLY SPRINKLERED SECTION 903.4.4 & 903.11

BUILDING HEIGHT

ALLOWABLE: 4 STOREYS (95 FEET) SECTION 903.2.1 1 STORY / 20 FT ALLOWABLE INCREASE FOR SPRINKLERED FACILITY.

MEZANINE LEVEL, NOT A STORY PER IBC 101 AND 106.1 MEZANINE AREA = 9,844 S.F. 4004 / 4,255 = 21.2 MEZANINE + LESS THAN 50% OF THE MAIN FLOOR AREA

BUILDING AREA

ALLOWABLE: 12,000 S.F. SECTION 903.2 AREA NOT LIMITED AREA NOT LIMITED WITH AUTOMATIC SPRINKLER SYSTEM PROVIDED THROUGHOUT IN ACCORDANCE WITH 903.11.1 FACILITY: MAIN FLOOR = 4,255 S.F. MEZANINE = 9,844 S.F. TOTAL AREA = 14,099 S.F.

MEZANINES

AREA LIMITATION (IBC 2): 8,400 SF (1/3 AREA OF FLOOR THAT IT SERVES)

NO MEZANINE IS REQUIRED, TWO PROVIDED

OPPRESS (IBC 2) (NOT REQUIRED) OPPRESS IS NOT REQUIRED TO BE OPEN TO THE ROOM IN WHICH ITS LOCATION, AT LEAST ONE OF THE MEZANINES OR OPPRESS PROVIDES ACCESS TO THE MEZANINE FROM THE MEZANINE FLOOR.

BUILDING SQUARE FOOTAGE CALCULATIONS

Table with columns: FIRST FLOOR, SALES AREA, STORE AREA, MEZANINE, OFFICE AREAS, etc. Total building occupancy: 1,280.

OCCUPANT LOAD (RELATED TO EXIT CAPACITY) TABLE 1004.2

Table with columns: FIRST FLOOR, SALES AREA, STORE AREA, MEZANINE, OFFICE AREAS, etc. Occupant load: 1,280.

CAPACITY OF EXGRESS COMPONENTS TABLE 1005.1

Table with columns: LOCATION, OCCUPANCY, REQUIRED, PROVIDED. Includes information for stairs and exits.

NAMES OF EXITS

Table with columns: LOCATION, OCCUPANCY, REQUIRED, PROVIDED.

MEANS OF EXGRESS

GENERAL PROVISIONS (1005.1) STAIRS (1005.2) EXITS (1005.3) EXITS (1005.4) EXITS (1005.5) EXITS (1005.6) EXITS (1005.7) EXITS (1005.8) EXITS (1005.9) EXITS (1005.10) EXITS (1005.11) EXITS (1005.12) EXITS (1005.13) EXITS (1005.14) EXITS (1005.15) EXITS (1005.16) EXITS (1005.17) EXITS (1005.18) EXITS (1005.19) EXITS (1005.20) EXITS (1005.21) EXITS (1005.22) EXITS (1005.23) EXITS (1005.24) EXITS (1005.25) EXITS (1005.26) EXITS (1005.27) EXITS (1005.28) EXITS (1005.29) EXITS (1005.30) EXITS (1005.31) EXITS (1005.32) EXITS (1005.33) EXITS (1005.34) EXITS (1005.35) EXITS (1005.36) EXITS (1005.37) EXITS (1005.38) EXITS (1005.39) EXITS (1005.40) EXITS (1005.41) EXITS (1005.42) EXITS (1005.43) EXITS (1005.44) EXITS (1005.45) EXITS (1005.46) EXITS (1005.47) EXITS (1005.48) EXITS (1005.49) EXITS (1005.50) EXITS (1005.51) EXITS (1005.52) EXITS (1005.53) EXITS (1005.54) EXITS (1005.55) EXITS (1005.56) EXITS (1005.57) EXITS (1005.58) EXITS (1005.59) EXITS (1005.60) EXITS (1005.61) EXITS (1005.62) EXITS (1005.63) EXITS (1005.64) EXITS (1005.65) EXITS (1005.66) EXITS (1005.67) EXITS (1005.68) EXITS (1005.69) EXITS (1005.70) EXITS (1005.71) EXITS (1005.72) EXITS (1005.73) EXITS (1005.74) EXITS (1005.75) EXITS (1005.76) EXITS (1005.77) EXITS (1005.78) EXITS (1005.79) EXITS (1005.80) EXITS (1005.81) EXITS (1005.82) EXITS (1005.83) EXITS (1005.84) EXITS (1005.85) EXITS (1005.86) EXITS (1005.87) EXITS (1005.88) EXITS (1005.89) EXITS (1005.90) EXITS (1005.91) EXITS (1005.92) EXITS (1005.93) EXITS (1005.94) EXITS (1005.95) EXITS (1005.96) EXITS (1005.97) EXITS (1005.98) EXITS (1005.99) EXITS (1005.100)

BUILDING CODE

MINIMUM CONSTRUCTION ELEMENTS TABLE 601 (TYPE III CONSTRUCTION)

Table with columns: TYPE III CONSTRUCTION, FIRE RATING, STRUCTURAL FRAME, BEARING WALLS, etc.

FIRE RESISTANCE RATINGS

Table with columns: ELEVATOR SHAFT ENCLOSURE, ELEVATOR MACHINE ROOM, STAIR ENCLAVES, etc.

PLUMBING FIXTURES

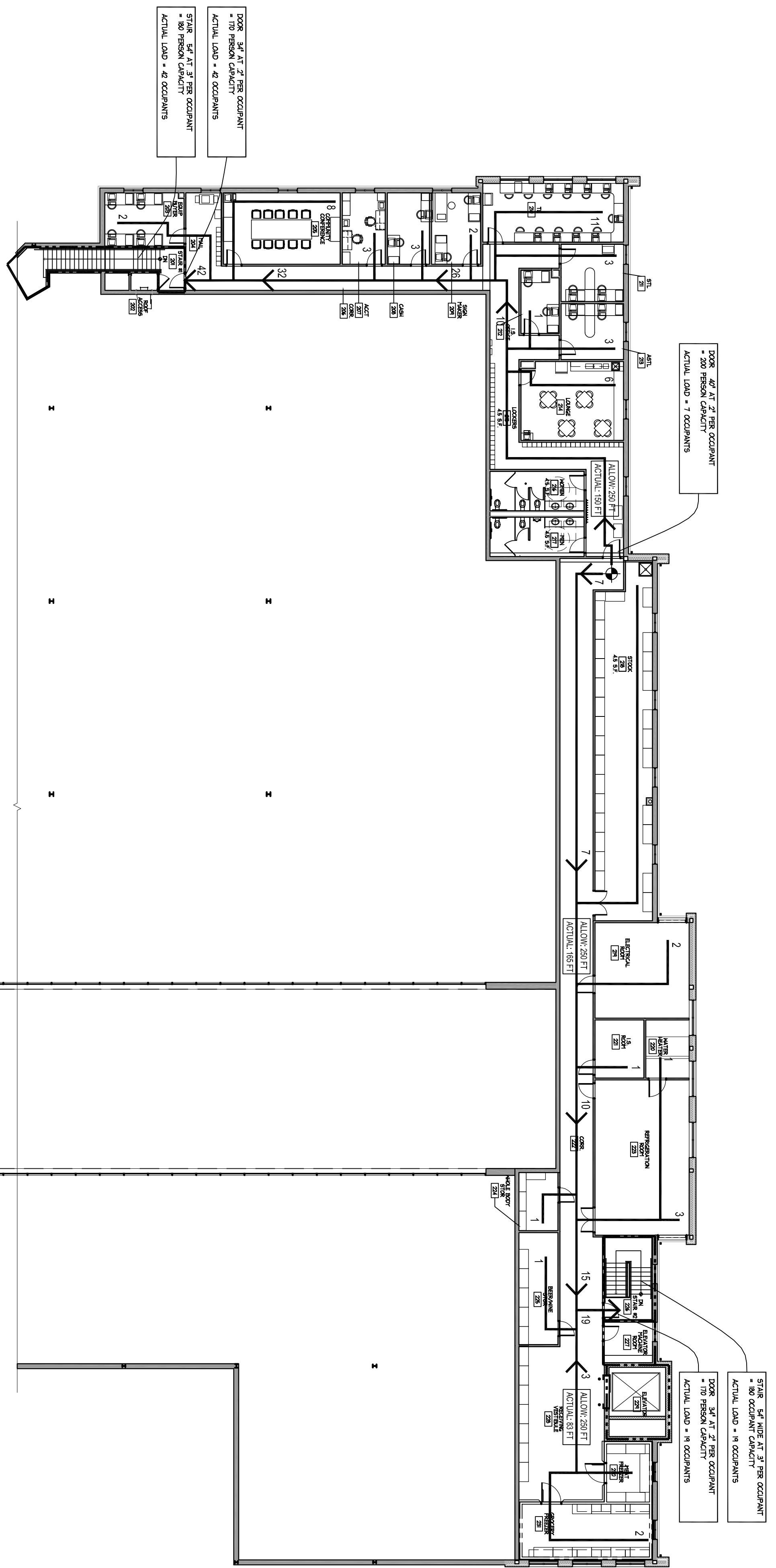
Table with columns: GROSS POPULATION, REQUIRED, ACTUAL. Includes entries for restrooms and lavatories.

Table with columns: GROSS POPULATION, REQUIRED, ACTUAL. Includes entries for seating in restaurant and offices.

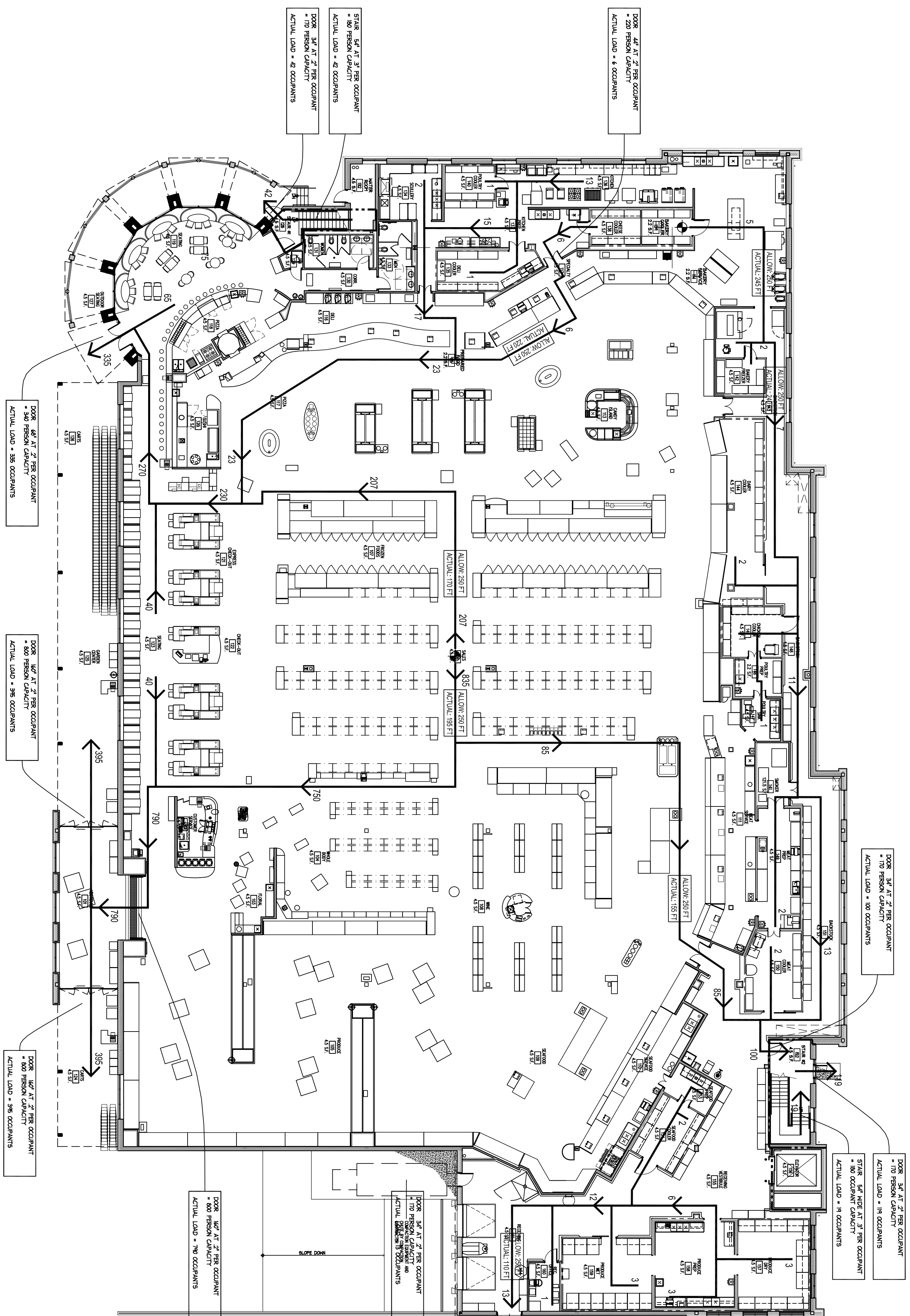
ZONING INFORMATION

BUILDING ZONE

NUMBER OF BUILDING SIGNS PERMITTED PER LOT: 1 PER FACADE PLUS 1. NUMBER OF BUILDING SIGNS PROVIDED: 1 PER FACADE (4 TOTAL). HAZARDY SIZE OF BUILDING SIGN: 2.5 SF PER LINEAR FOOT OF BUILDING FACADE. HAZARDY SIZE OF BUILDING SIGN: 175 SF. HAZARDY SIZE OF FREESTANDING SIGN: 1.5 SQM. HAZARDY SIZE OF FREESTANDING SIGN: 1.5 SQM. HAZARDY SIZE OF FREESTANDING SIGN: 1.5 SQM.



MEZANINE EXGRESS PLAN



FIRST FLOOR EXGRESS PLAN

PLAN NORTH, ACTUAL NORTH, FIRE RATED PARTITION LEGEND, SEE SHEET 101 FOR ADDITIONAL FIRE PROTECTION INFORMATION.

WHOLE FOODS logo and contact information.

ISSUED FOR CONSTRUCTION

PROPOSED GROCERY STORE 2 SOMERSET STREET PORTLAND, CUMBERLAND COUNTY, MAINE

Project title: CODE ANALYSIS AND EXGRESS PLANS. Drawing number: A0.02. Includes a small table with project details.