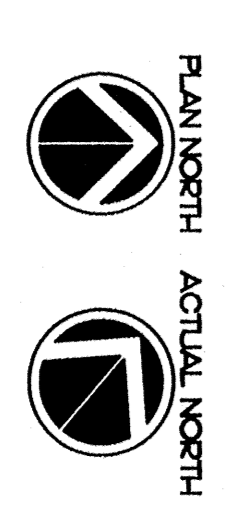


No.	Date	Desc.
1	06/26/06	ISSUED FOR PERMITS

DESIGNED BY: D.B.
DRAWN BY: A.P.
CHECKED BY: A.L.
SCALE: AS NOTED
DATE: 04-24-06
DWG. NO: A40-0282101



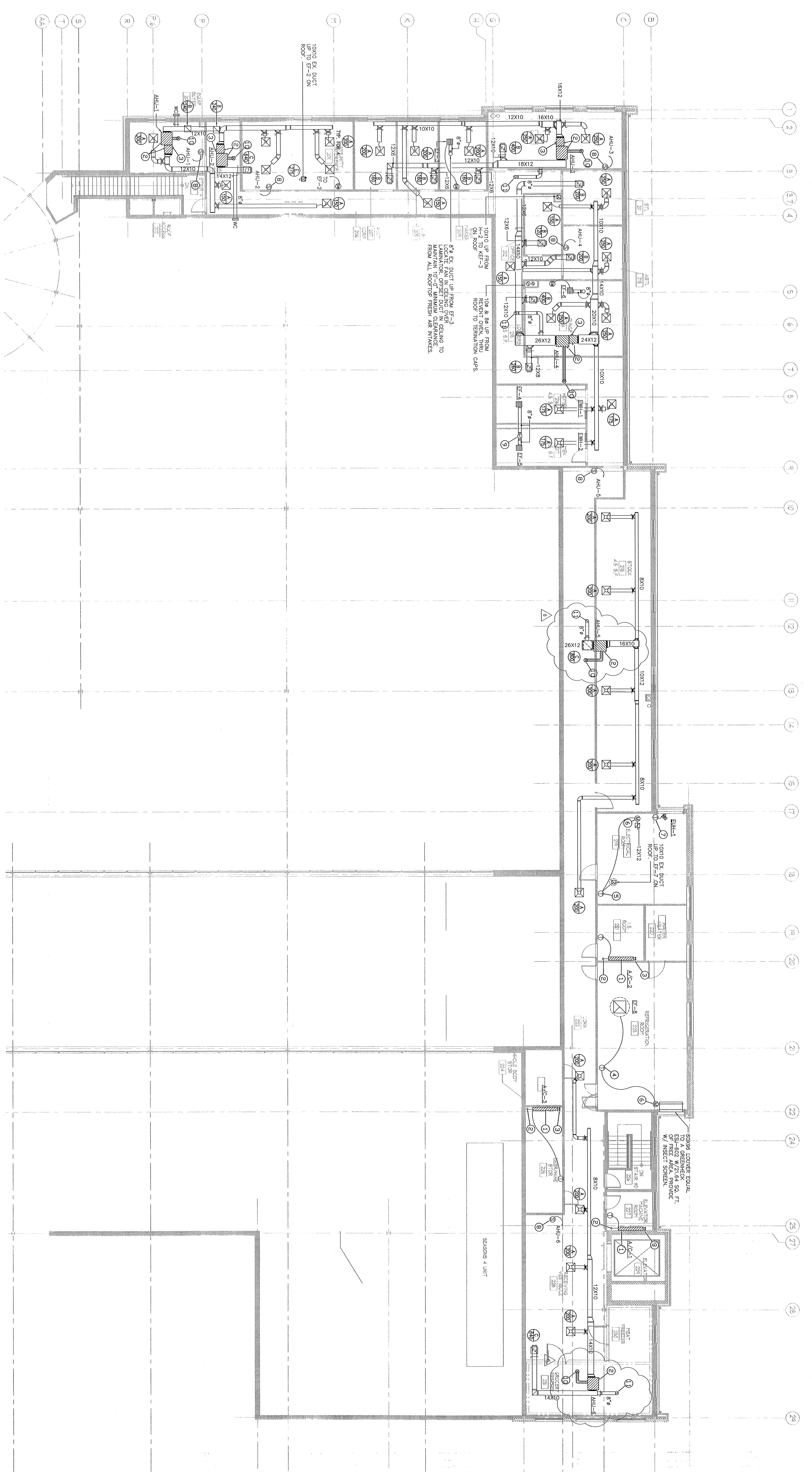
SEQUENCE OF OPERATION FOR EF-8

1. THE LOWER SHALL BE OPEN.
2. THE LOWER DAMPER SHALL BE CLOSED UNTIL THE TEMPERATURE IN THE SPACE IS ABOVE ITS SETPOINT (SET POINT). TEMPERATURE SHALL BE SET AND MONITORED BY AN ADJUSTABLE WALL MOUNTED THERMOSTAT.
3. THE LOWER SHALL BE OPEN.
4. THE DAMPER SHALL BE OPEN.
5. THE DAMPER SHALL BE CLOSED UNTIL THE TEMPERATURE IN THE SPACE IS ABOVE ITS SETPOINT (SET POINT). TEMPERATURE SHALL BE SET AND MONITORED BY AN ADJUSTABLE WALL MOUNTED THERMOSTAT.

HVAC GENERAL NOTES

1. COORDINATE THE EXACT LOCATION OF CEILING MOUNTED AIR DIFFUSERS WITH ARCHITECTED CEILING PLAN.
2. AIR STREAM DIMENSION REQUIREMENTS.
3. CONTRACTOR SHALL ROUTE DUCTWORK WITHIN THE CEILING CLEARANCE ALLOWABLE.
4. CONTRACTOR TO PROVIDE RISE/MAKE DAMPERS AT ALL CHANGED LOCATIONS. NON-SURGICAL ON SHEET MODEL FOR DUCT.
5. INSULATION REQUIREMENTS.
6. MANUFACTURER'S INSTALLATION REQUIREMENTS SHALL BE COORDINATED WITH DIFFUSER COLLAR DIMENSION.
7. DIV. 16 TO PROVIDE SMOKE DETECTORS. DIV. 13 TO INSTALL IN OR ABOVE 2000 CFM WIND BY DIV. 16. COORDINATION WITH DIV. 16.
8. GENERAL THAT ALL MECHANICAL EQUIPMENT METS LOCAL, REPRESENTATIVE, PETER BLANK, PHONE # 208-281-5221.
9. CONTRACTOR TO COORDINATE ALL DIFFUSER FRAMES WITH FINISHED CEILING.
10. CONTRACTOR TO PROVIDE YOUNG REGULATORS AT ALL DIFFUSER LOCATIONS FOR ALL ROOF MOUNTED EQUIPMENT. CONTRACTOR TO VISIT SITE PRIOR TO BID TO VERIFY EXACT LOCATION FOR ALL ROOF MOUNTED EQUIPMENT. CONTRACTOR TO CARRY ALLOWANCE FOR CONDENSING UNITS. CONTRACTOR TO CARRY ALLOWANCE BASED ON EXACT LOCATION OF ROOF MOUNTED EQUIPMENT.
11. CONTRACTOR TO VISIT SITE PRIOR TO BID TO VERIFY EXACT LOCATION FOR ALL ROOF MOUNTED EQUIPMENT. CONTRACTOR TO CARRY ALLOWANCE FOR CONDENSING UNITS. CONTRACTOR TO CARRY ALLOWANCE BASED ON EXACT LOCATION OF ROOF MOUNTED EQUIPMENT.
12. CONTRACTOR'S MANUFACTURER IS DANGEROUS. CONTRACTOR TO PROVIDE REPRESENTATIVE, PETER BLANK, PHONE # 208-281-5221.
13. CONTRACTOR TO COORDINATE ALL DIFFUSER FRAMES WITH FINISHED CEILING.
14. AHU-1 THRU AHU-6 ARE TO BE LOCATED IN TRUSS SPACE ABOVE.

MEZZANINE HVAC PLAN



HVAC NOTES BY SYMBOLS

1. WALL MOUNTED EVAPORATOR MOUNT 12" BELOW CEILING.
2. ROUTE TO WEAVER CONDENSATE STANDPIPE. SEE PLUMBING.
3. INSULATED LIQUID AND VAPOR LINES FROM EVAP COILS TO CONDENSERS.
4. RUN AS FEASIBLE. CONTRACTOR TO PROVIDE SIZES TO CONDENSERS.
5. THERMOSTAT TO BE INTERLOCKED WITH EF-8. SET THERMOSTAT TO MAINTAIN SET F. PROVIDE VV/CLEAN LOOKING COVER AND KEY.
6. MAINTAIN TO BE PROVIDED WITH CLEAN LOOKING COVER AND KEY.
7. 2-POSITION MOTORIZED DAMPER INTERLOCK WITH EF-7 OPERATION. MAINTAIN TO BE PROVIDED WITH CLEAN LOOKING COVER AND KEY.
8. LABEL AS HEATING ONLY THERMOSTAT.
9. PROVIDE NEW THERMOSTAT SYSTEM ON WALL. COORDINATE EXACT LOCATION FROM AHU'S TO SENSORS AND CONTROL PANEL. VERIFY CONTROL.
10. RAIN CAP OFFSET DUCT AS REQUIRED TO MAINTAIN 10 FEET CLEARANCE FROM ALL CEILING AIR INTAKE.
11. THROUGH NEW ROOF OPENING. PROVIDE WITH RAIN CAP OFFSET DUCT AS REQUIRED TO MAINTAIN 10 FEET CLEARANCE FROM ALL EXHAUST DISCHARGE. TERMINATION KIT UP THROUGH ROOF. MAINTAIN TO BE PROVIDED WITH CLEAN LOOKING COVER AND KEY.
12. MAINTAIN TO BE PROVIDED WITH CLEAN LOOKING COVER AND KEY. MANUFACTURER'S INSTALLATION INSTRUCTIONS.