

**HOOD INFORMATION - Job#2391337**

HOOD NO.	TAG	MODEL	LENGTH	MAX. COORDIN. TIME	EXHAUST SYSTEM	TOTAL SUPPLY CFM	HOOD CONSTRUCTION	HOOD CONFIG.
6		7230	11' 10.00"	600 Dwg	5060	247	2030 - 2500"	3000 Where Existing

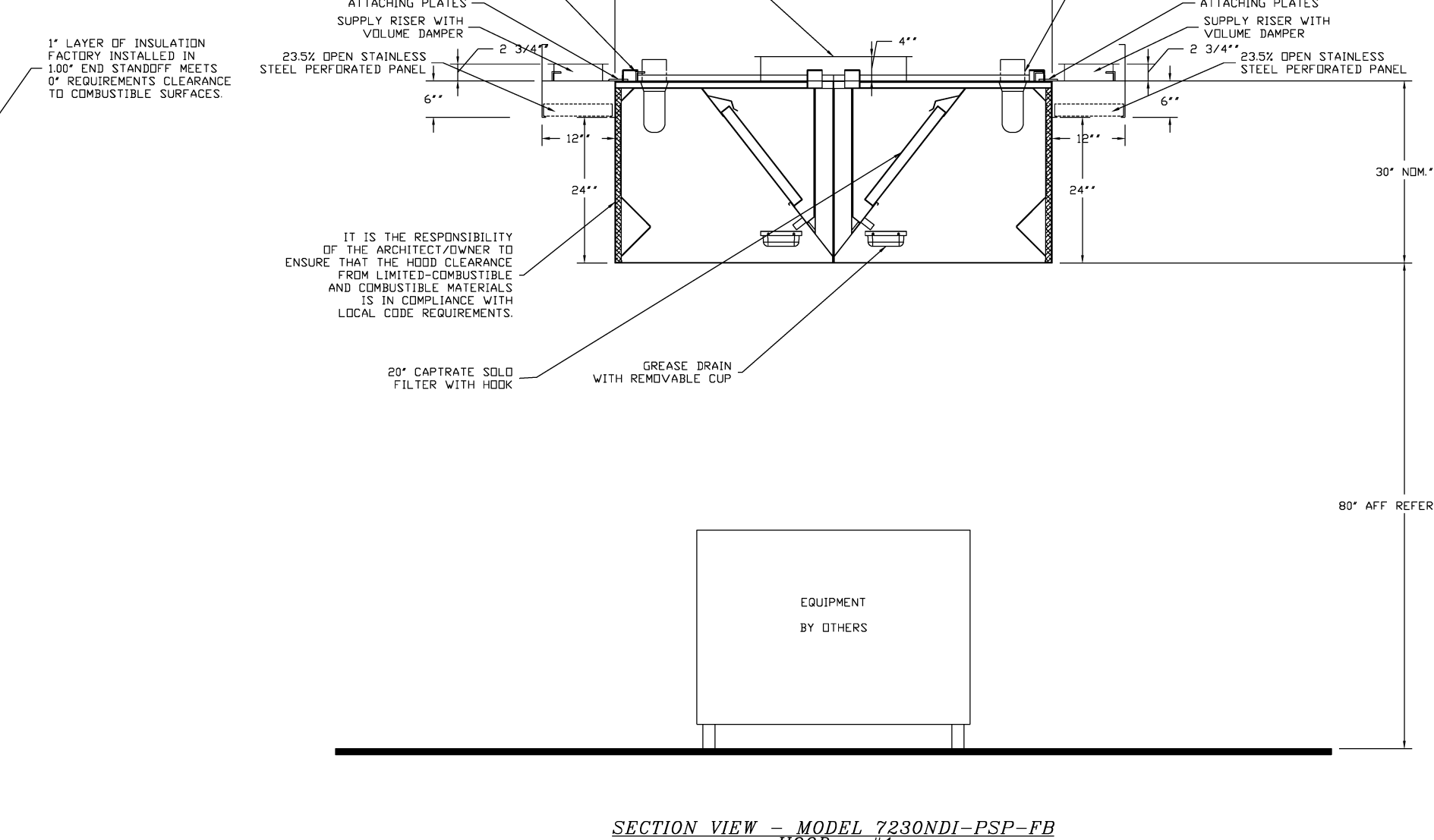
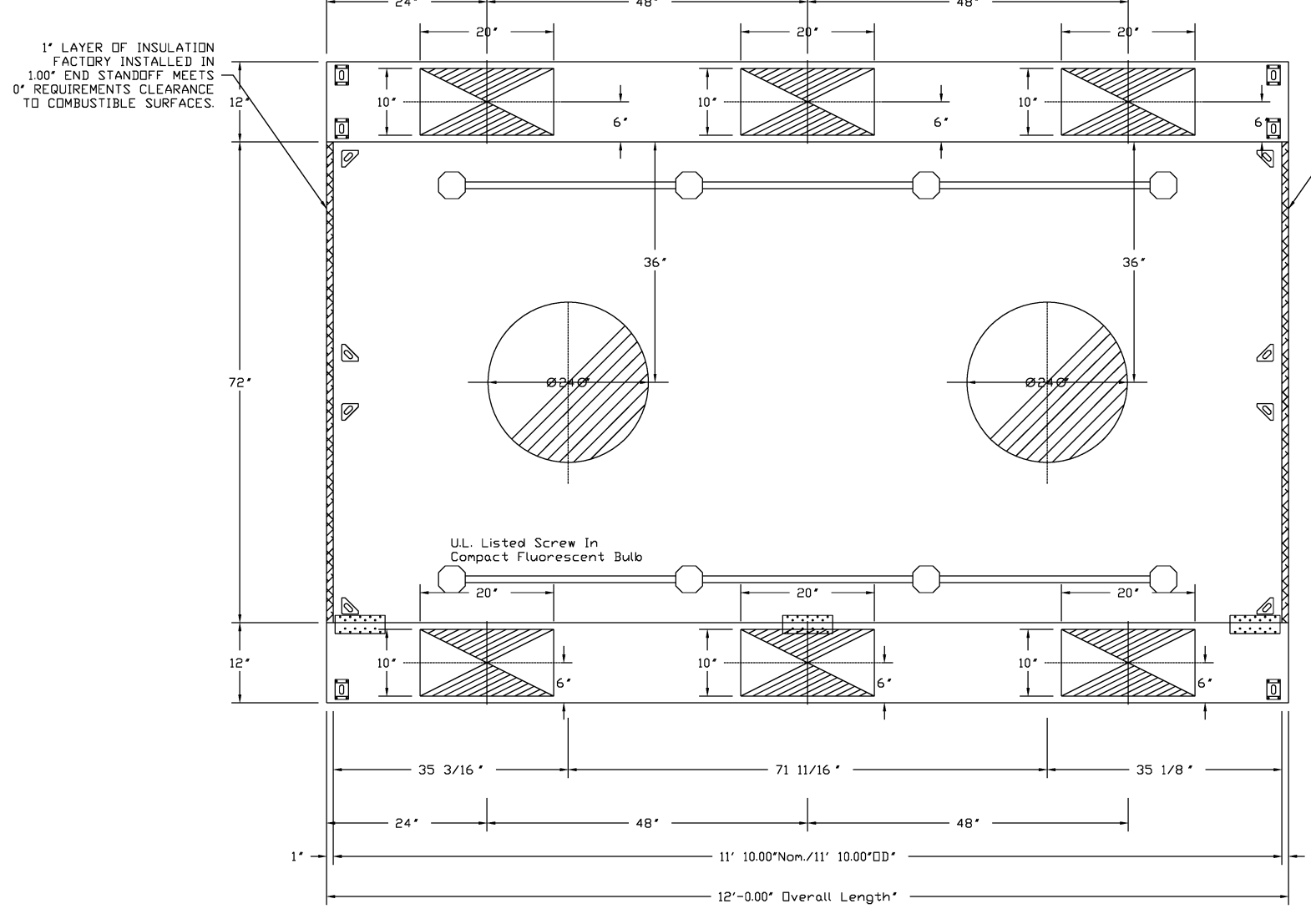
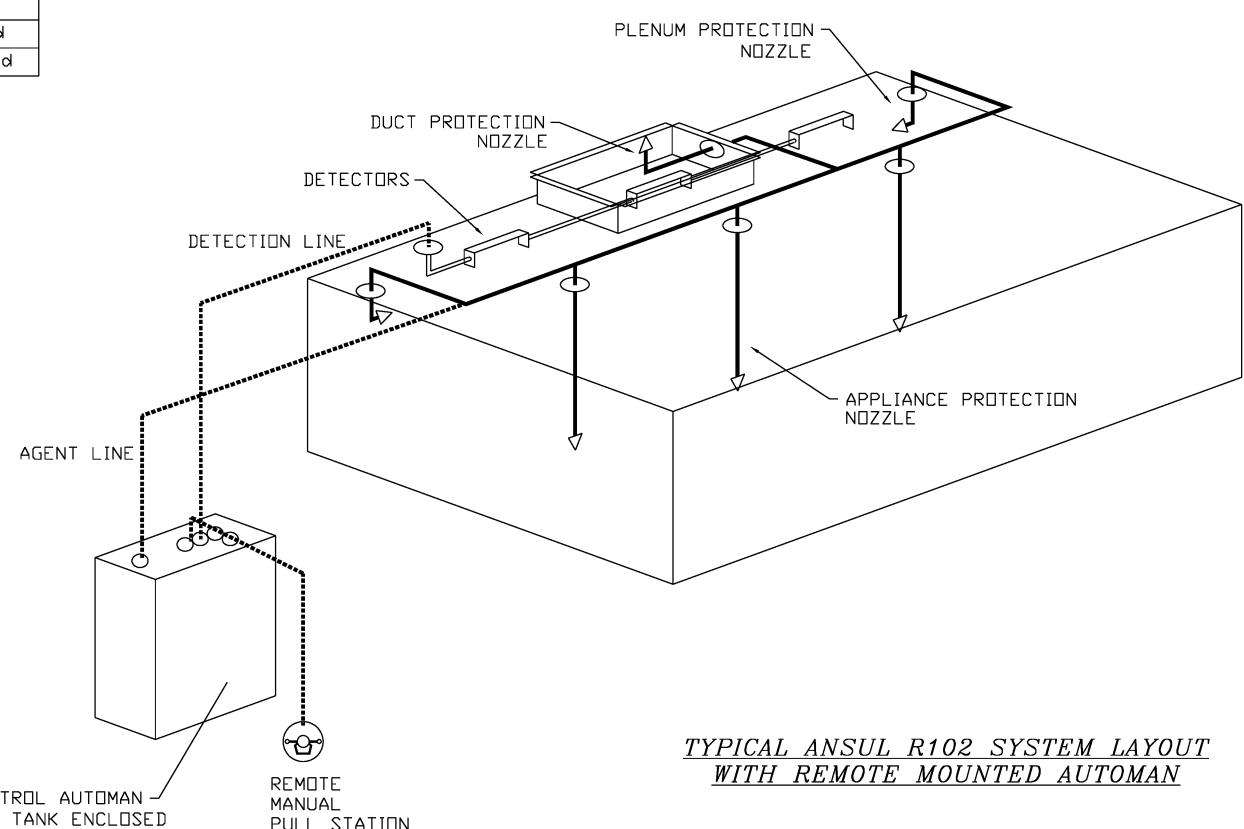
HOOD NO.	TAG	TYPE	EFFICIENCY # 9	TYPE	WIRE GUARD	LOCATION	TYPE	SIZE	ELECTRICAL	SWITCHES	FIRE	WIRE SYSTEM
6		Cartridge Baffle Filter	35	20"	35"	See Filter Spec	B	Screen in Compact	NO		NO	NO

HOOD NO.	TAG	TYPE	EFFICIENCY # 9	TYPE	WIRE GUARD	LOCATION	TYPE	SIZE	ELECTRICAL	SWITCHES	FIRE	WIRE SYSTEM
5		Cartridge Baffle Filter	35	20"	35"	See Filter Spec	B	Screen in Compact	NO		NO	NO

HOOD NO.	TAG	TYPE	EFFICIENCY # 9	TYPE	WIRE GUARD	LOCATION	TYPE	SIZE	ELECTRICAL	SWITCHES	FIRE	WIRE SYSTEM
6		Cartridge Baffle Filter	35	20"	35"	See Filter Spec	B	Screen in Compact	NO		NO	NO



**EXHAUST FAN INFORMATION - Job#2391337**

FAN NO.	TAG	FAN UNIT MODEL #	CFM	ESP	HP	HP	HP	VOLTS	FLA	WEIGHT (LBS)	SCENES
6	407-6	NEAR47A	5060	1000	831	3100	207/3	3	460	39	248

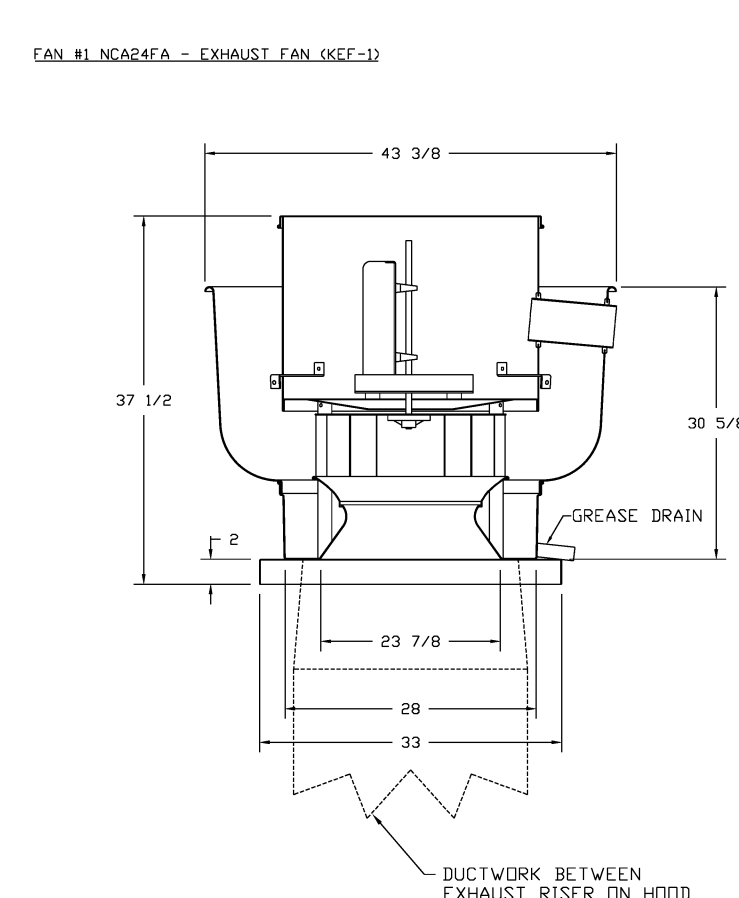
**FAN OPTIONS**

FAN UNIT	TAG	DESCRIPTION
6	407-6	Grassie Box

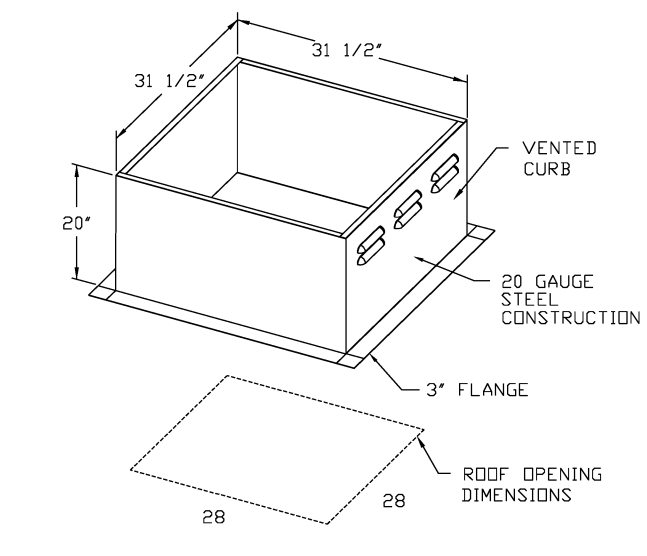
  

**CURB ASSEMBLY**

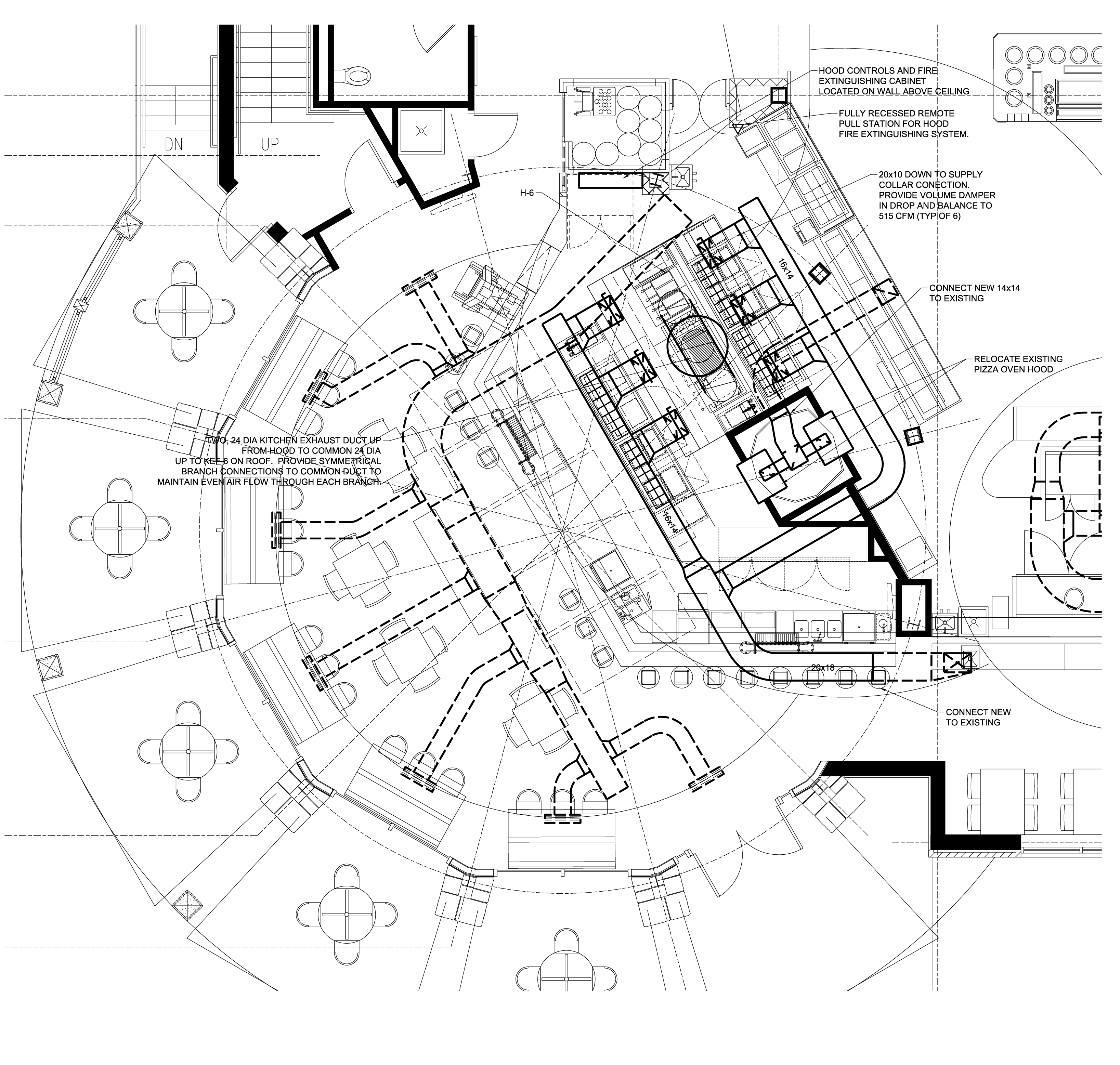
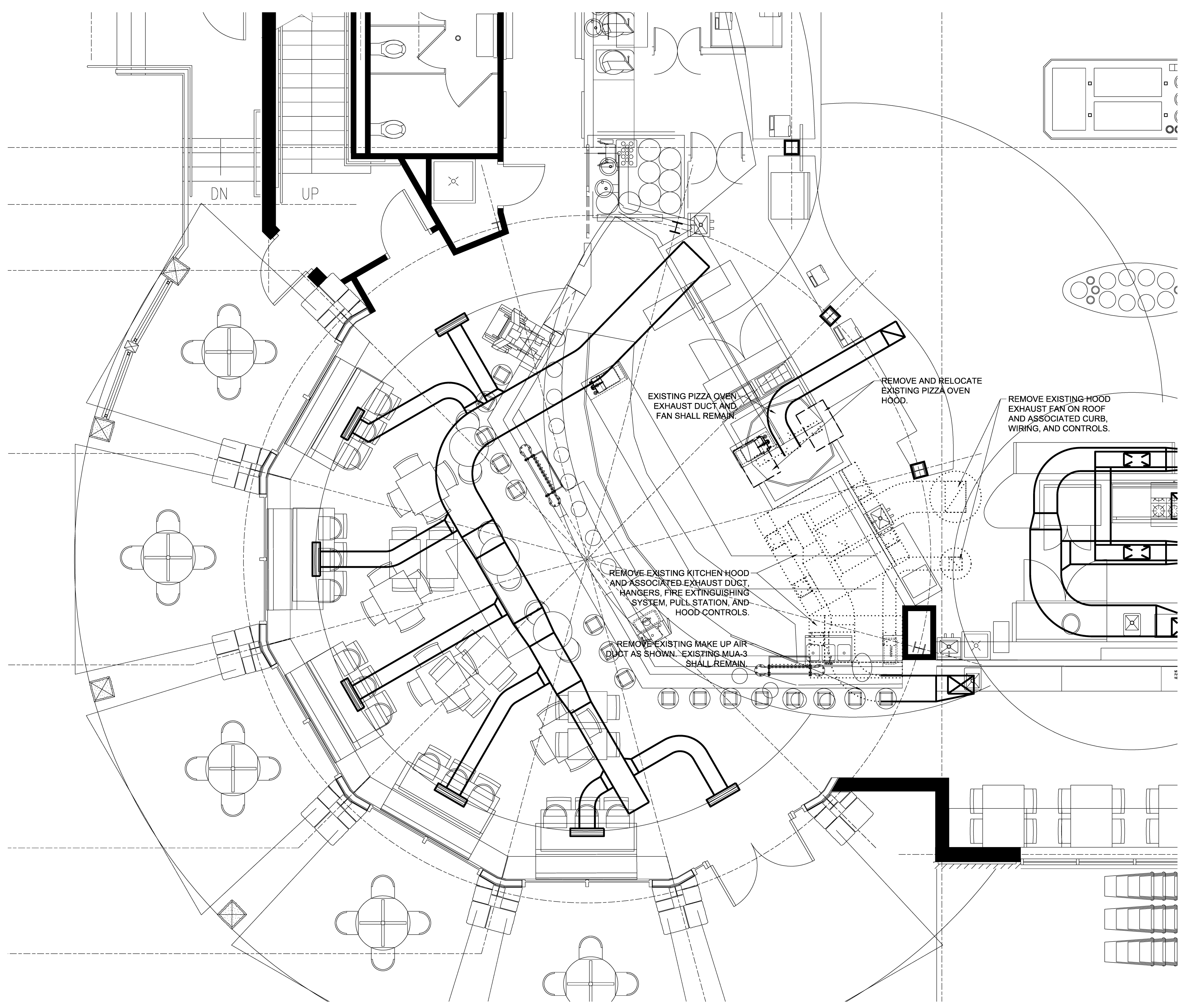
NO.	TAG	HEIGHT	SIZE
6	407-6	48 LBS	Curb



- FEATURES**
- ROOF MOUNTED FAN
  - RESTAURANT HOOD
  - 14\"/>
  - APCA SOUND AND AIR IDENTIFIED
  - WIRING FROM HOOD TO EXTINGUISHING CABINET
  - WATERPROOF JOINTS
  - HIGH HEAT OPERATOR BODY CAPS
  - GREASE COLLECTION SYSTEM
- ANSI/UL 148-1 TEST**
- EXHAUST FAN MUST OPERATE CONTINUOUSLY WHILE EXTINGUISHING CABINET IS OPEN. EXHAUST FAN MUST BE OPEN AND EXTINGUISHING CABINET MUST BE OPEN FOR 15 MINUTES WITHOUT THE FAN RECORDING A STOP OR EXHAUST FAN STOPPING AT ANY POINT.



**3 KITCHEN HOOD DETAILS AND SCHEDULES**  
SCALE: NONE

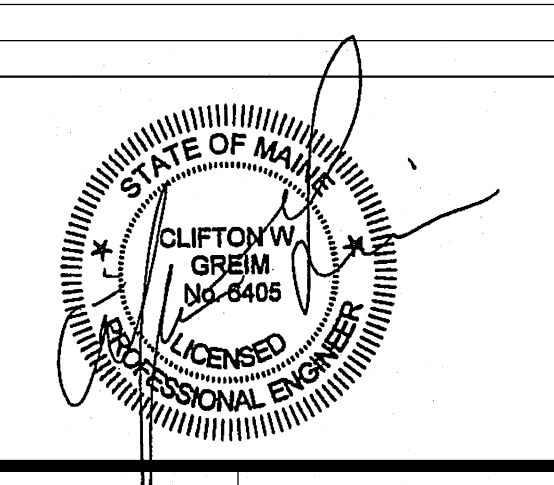


**2 MECHANICAL FLOOR PLAN - DEMOLITION**  
SCALE: 1/8\"/>

**1 MECHANICAL FLOOR PLAN - NEW**  
SCALE: 1/8\"/>

**Issues and Revisions**

Mark	Date	Description
-	09-09-15	ISSUED FOR PERMITTING
-	10-08-15	CONSTRUCTION DOCUMENTS



Drawing Dates  
PA/PE: CG © 2015  
Drawn By: JSC Harriman Associates