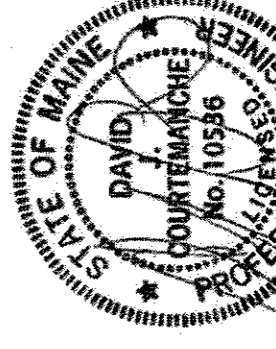


PROFESSIONAL ELECTRICAL CONTRACTORS OF CT, INC.
100 Avenue Road
Norwalk, MA 02062
Tel 781 799 9351
Fairfield, CT 06424

e3i Engineers Inc.
4 South Market Street,
Suite S0206
Boston, MA 02109
Tel 781 799 9351



Scale	AS SHOWN
Notes	SEE DRAWING FOR DETAILS OF INSTALLATION

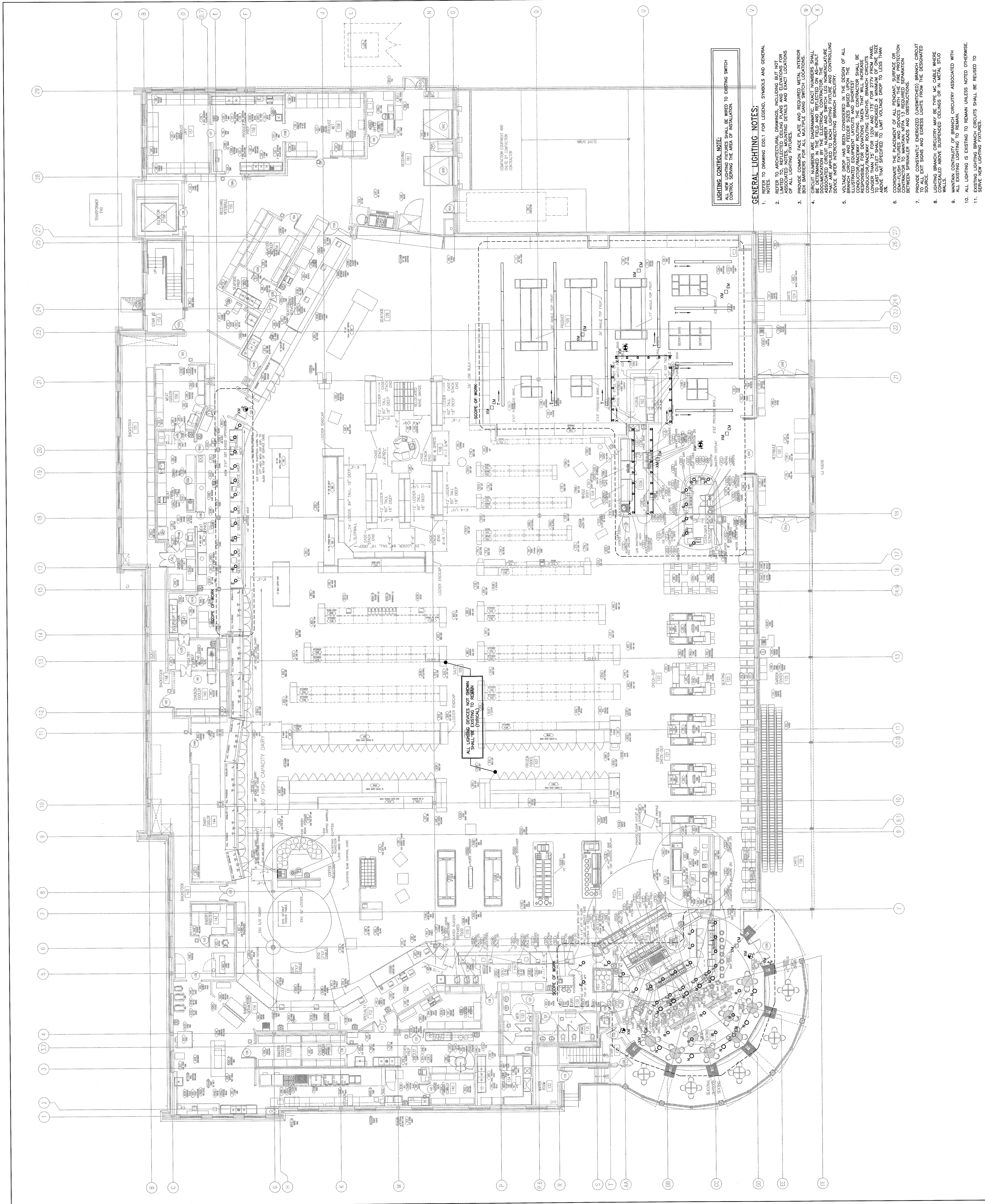


Drawing Sheet
10403-1-10

© 2015
Harriman Associates

**ELECTRICAL
FIRST FLOOR
LIGHTING PLAN**

E20.1



LIGHTING CONTROL NOTE:
ALL NEW LIGHTING FIXTURES SHALL BE WIRED TO EXISTING SWITCH CONTROL SERVING THE AREA OF INSTALLATION.

GENERAL LIGHTING NOTES:

- REFER TO DRAWING E00.1 FOR LEGEND, SYMBOLS AND GENERAL NOTES.
- REFER TO ARCHITECTURAL DRAWINGS, INCLUDING BUT NOT LIMITED TO, REFLECTED CEILING PLANS AND ELEVATIONS FOR ASSOCIATED NOTES, MOUNTING DETAILS AND EXACT LOCATIONS.
- PROVIDE COMMON FACE PLATE AND REQUIRED METAL INTERIOR BOX BARRIERS FOR ALL MULTIPLE GANG SWITCH LOCATIONS.
- CIRCUIT NUMBERS ARE DIAGRAMMATIC. EXACT NUMBERS SHALL BE DETERMINED IN THE FIELD AND REFLECTED ON AS-BUILT DRAWINGS. THE CONTRACTOR SHALL VERIFY THE EXISTING ASSOCIATED CIRCUIT NUMBER AND SWITCH LEG NOMENCLATURE BEFORE INTERCONNECTING BRANCH CIRCUITRY.
- VOLTAGE DROP HAS BEEN CONSIDERED IN THE DESIGN OF ALL BRANCH CIRCUIT AND FEEDER SIZES BASED UPON THE CONDUCTOR/RACEWAY ROUTING. THE CONTRACTOR SHALL BE RESPONSIBLE FOR OBSERVATIONS INCLUDING BRANCH CIRCUITS LONGER THAN 75' FOR 120V AND 175' FOR 277V FROM PANEL TO LOAD. LIGHTING CIRCUITS SHALL BE LIMITED TO A VOLTAGE ABOVE THAT SPECIFIED TO LIMIT VOLTAGE DROP TO LESS THAN 3%.
- COORDINATE THE PLACEMENT OF ALL PENDANT SURFACE OR RECESSED LIGHTING WITH THE CONTRACTOR TO MAINTAIN NFA 13 REQUIRED SEPARATION BETWEEN SPRINKLER HEADS AND OBSTRUCTIONS.
- PROVIDE CONSTANTLY ENERGIZED (UNSWITCHED) BRANCH CIRCUIT SOURCE.
- LIGHTING BRANCH CIRCUITRY MAY BE TYPE MC CABLE WHERE CONCEALED ABOVE SUSPENDED CEILINGS OR IN METAL STUD WALLS.
- MAINTAIN CONTINUITY OF BRANCH CIRCUITRY ASSOCIATED WITH ALL EXISTING LIGHTING TO REMAIN.
- ALL EXISTING LIGHTING TO REMAIN UNLESS NOTED OTHERWISE.
- EXISTING LIGHTING BRANCH CIRCUITS SHALL BE REUSED TO SERVE NEW LIGHTING FIXTURES.