

158 x 190.5 = 26,259 sq ft = 152 sq ft

"W" & "H" WERE

ED

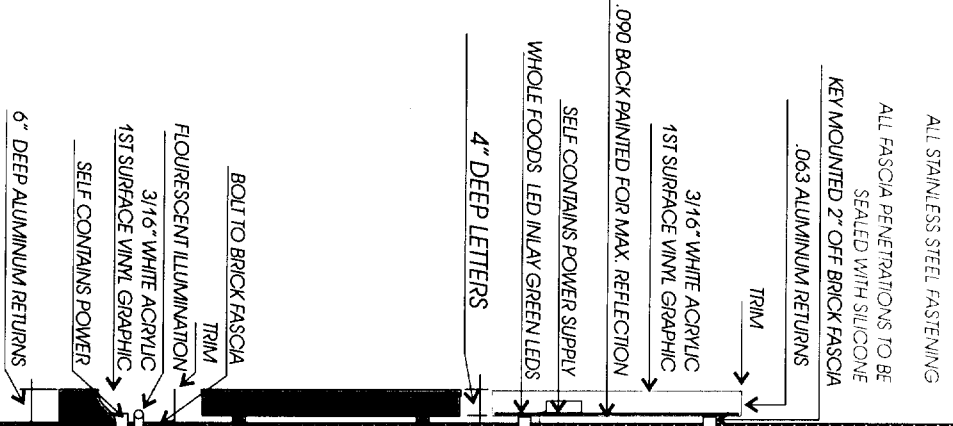
11.5' = 138"



"W" & "H" WERE SEPARATED



TYPICAL SIDE VIEW N.T.S.



DASHED LINE INDICATES OVERALL COPY AREA 11'-4 7/8" X 16'-6 1/2" 11.41 X 16.54 = 188.72 X 2 = 377.44 SQ. FT.

CHANNEL LETTER (4" DEEP) W/ GREEN LED ILLUMINATION SELF-CONTAINED  
 GE JELCORE LED (GREEN) DOUBLE UP ON AMOUNTS ALL LED TO BE FROM SAME BATCH RUN FOR CONSISTENCY IN ILLUMINATION

CHANNEL SHAPE (6" DEEP) W/ FLOURESCENT ILLUMINATION SELF-CONTAINED

[2] SETS OF 42" CHANNEL LETTERS "WHOLE FOODS LOGO"  
 [2] SETS OF 33" CHANNEL LETTERS "WHOLE FOODS LOGO"

377.44 SQ.FT. + 233.94 = TOTAL 611.38  
 INTERIOR OF LETTER BACK TO BE PAINTED CLEARSTAR (CS LEW) FOR MAX. REFLECTION  
 FACES: 3/16" #2447 WHITE ACRYLIC  
 W/ FIRST SURFACE 3-M HOLLY GREEN 3630-76 TRANSLUCENT VINYL  
 TRIM: SILVATRIM KELLY GREEN #121  
 .063 ALUMINUM RETURNS: PAINT PMS #342 MATE FINISH

DASH OVER 88.9

NOTES:

|  |                              |
|--|------------------------------|
| APPROVED MANUFACTURING                 | DATE                         |
| VOLTAGE: 120V REQUIRED FOR LED LETTERS | 277 V IS UNAVAILABLE FOR LED |
| 8/21/06                                | 2 SIZES                      |

**PLEASE NOTE:**  
 THIS IS A PROGRESS PRINT - FIELD MEASUREMENTS MAY OR MAY NOT NEED TO BE VERIFIED.  
 THIS DESIGN IS THE EXCLUSIVE PROPERTY OF BAILEY SIGN INCORPORATED AND ALL RIGHTS TO ITS USE OR REPRODUCTION ARE RESERVED.  
 THE ACCURACY OF THIS COLOR RENDERING IS LIMITED BY MEDIA AND OUTPUT DEVICES AND IS INTENDED FOR REFERENCE ONLY. ACTUAL MANUFACTURING GRAPHIC COLORS MAY VARY DEPENDING ON PROCESSING & MATERIALS USED. "DIP" COLOR MATCHES OF SUBMITTED SPECIFICATIONS CAN NOT BE GUARANTEED.  
 IF AN ELECTRIC SIGN, THEN INSTALLATION MUST BE ACCOMPLISHED IN TOTAL COMPLIANCE WITH ARTICLE 600 OF THE NATIONAL ELECTRICAL CODE THE REQUIREMENTS OF UNDERWRITERS LABORATORY CANADIAN STANDARDS ASSOCIATION, AND/OR ANY APPLICABLE LOCAL CODES. THIS INCLUDES PROPER GROUNDING AND BONDING OF THE SIGN.  
 ALL ELECTRICAL SIGNS REQUIRE ROUTINE MAINTENANCE.

**Bailey Sign**  
 www.baileysign.com  
 9 Thomas Drive  
 Col. Westbrook Executive Park  
 Westbrook, ME 04092  
 207-774-2843 / 1-800-539-SIGN  
 Fax: 774-1193  
 E-Mail: newsign@baileysign.com  
 COPYRIGHT 2006

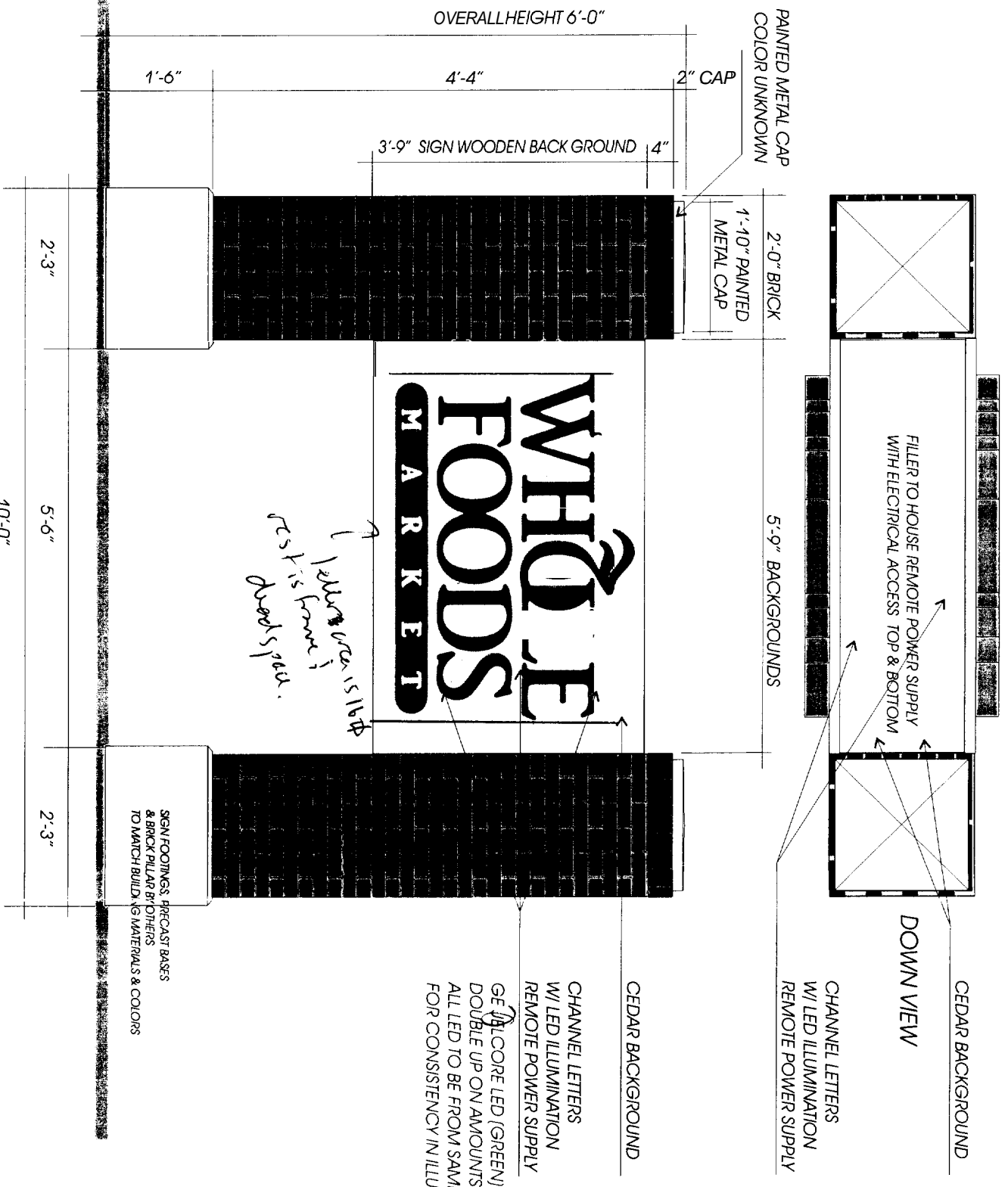
**CUSTOMER:** WHOLE FOODS  
 2 SOMERSET STREET  
 PORTLAND, MAINE

**SALES PERSON:** B.B. **DRAWN BY:** LWM

**SCALE:** 3/8" = 1' **DATE:** 8/15/06

**DRAWING #:** 05711AR1





CONCEPT DRAWING (1) D.F. FREESTANDING SIGNS FOR PEARL STREET  
 (1) D.F. FREESTANDING SIGNS FOR SOMERSET STREET

EACH FACE IS A 3'-9" X 5'-9" X 1 3/4" CEDAR PANEL BACKGROUND W/ CHANNEL LED LETTERS  
 BACKGROUND COLOR UNKNOWN OFF WHITE SHOWN HERE  
 INTERIOR OF LETTER BACK TO BE PAINTED CLEARSTAR (CS JEW) FOR MAX. REFLECTION  
 FACES: 3/16" # 2447 WHITE ACRYLIC  
 W/ FIRST SURFACE 3-M HOLLY GREEN 3630-76 TRANSLUCENT VINYL

TRIM: SILVATRIM KELLY GREEN # 121  
 .063 ALUMINUM RETURNS: PAINT PMS # 342 MATTE FINISH

Total Sq. ft. = 21.56 sq.

CHANNEL LETTERS  
 W/ LED ILLUMINATION  
 REMOTE POWER SUPPLY

GE (CORE LED (GREEN)  
 DOUBLE UP ON AMOUNTS  
 ALL LED TO BE FROM SAME BATCH RUN  
 FOR CONSISTENCY IN ILLUMINATION

DOWN VIEW  
 CEDAR BACKGROUND  
 CHANNEL LETTERS  
 W/ LED ILLUMINATION  
 REMOTE POWER SUPPLY

$$69' \times 45'' = 3105 \# \\ = 21.56 \#$$

$$4' 10.5'' \quad 58.5 \\ 3135'' \times 395 \\ \hline 2310.25 \\ 16.016$$

NOTES:

3

APPROVED MANUFACTURING DATE

VOLTAGE: 120V REQUIRED FOR LED LETTERS  
 277V IS UNAVAILABLE FOR LED

8/21/06 RAISE UP 4' LED COLOR GREEN  
 8/22/06 BACK TO 6' MAX.

REVISIONS:



www.baileysign.com  
 9 Thomas Drive  
 Col. Westbrook Executive Park  
 Westbrook, ME 04092  
 207-774-2843 / 1-800-539-SIGN  
 Fax: 774-1193  
 E-Mail: newsign@baileysign.com

COPYRIGHT 2006

PLEASE NOTE:

THIS IS A PROGRESS PRINT - FIELD MEASUREMENTS MAY OR MAY NOT NEED TO BE VERIFIED.  
 THIS DESIGN IS THE EXCLUSIVE PROPERTY OF BAILEY SIGN INCORPORATED AND ALL RIGHTS TO ITS USE OR REPRODUCTION ARE RESERVED.  
 THE ACCURACY OF THIS COLOR RENDERING IS LIMITED BY MEDIA AND OUTPUT DEVICES AND IS INTENDED FOR REFERENCE ONLY. ACTUAL MANUFACTURING COLORS MAY VARY DEPENDING ON PROCESSING MATERIALS USED. 100% COLOR MATCHES OF SUBMITTED SPECIFICATIONS CAN NOT BE GUARANTEED.

IF AN ELECTRIC SIGN, THEN INSTALLATION MUST BE ACCOMPLISHED IN TOTAL COMPLIANCE WITH ARTICLE 690 OF THE NATIONAL ELECTRICAL CODE THE REQUIREMENTS OF UNDERWRITERS LABORATORY CANADIAN STANDARDS ASSOCIATION AND/OR ANY APPLICABLE LOCAL CODES. THIS INCLUDES PROPER GROUNDING AND BONDING OF THE SIGN.  
 ALL ELECTRICAL SIGNS REQUIRE ROUTINE MAINTENANCE.

CLIENT ACCEPTANCE SIGNATURE DATE

CUSTOMER: WHOLE FOODS  
 LOCATION: 2 SOMERSET STREET  
 PORTLAND, MAINE

SALESPERSON: B.B. DRAWN BY: LMM

PS # W.O. #  
 4199

SCALE 1/2" = 1'  
 DATE 8/15/06

DRAWING # 05711 CR2

