

BUILDING SECTION "A"
SCALE: "NTS"
FINISH FLOOR ELEV. 100.0'

HYDRAULIC DATA NAMEPLATE

This Building is protected by a hydraulically designed Automatic Sprinkler System

Location AREA-1

No. of Sprinkler 11

Basis of design

- Density .10 gpm/sqft
- Design area 900 sqft

System Demand

- Water Flow Rate @ Base/Pump 185.22 gpm
- Residual Pressure @ Base/Pump 41.662 psi

CUSHION = 54.343 psi

HYDRAULIC DATA NAMEPLATE

This Building is protected by a hydraulically designed Automatic Sprinkler System

Location AREA-2

No. of Sprinkler 10

Basis of design

- Density .20 gpm/sqft
- Design area 1058 sqft

System Demand

- Water Flow Rate @ Base/Pump 262.67 gpm
- Residual Pressure @ Base/Pump 78.936 psi

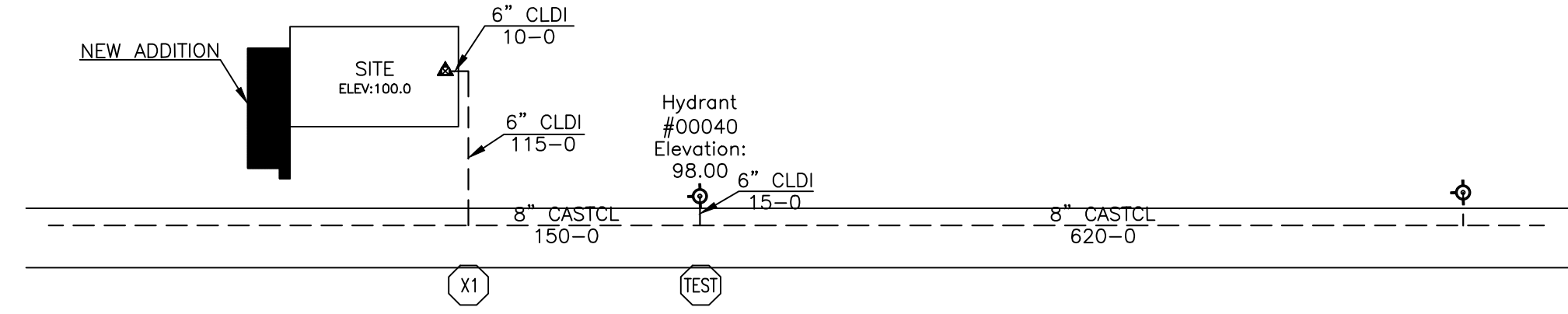
CUSHION = 15.955 psi

MOST REMOTE

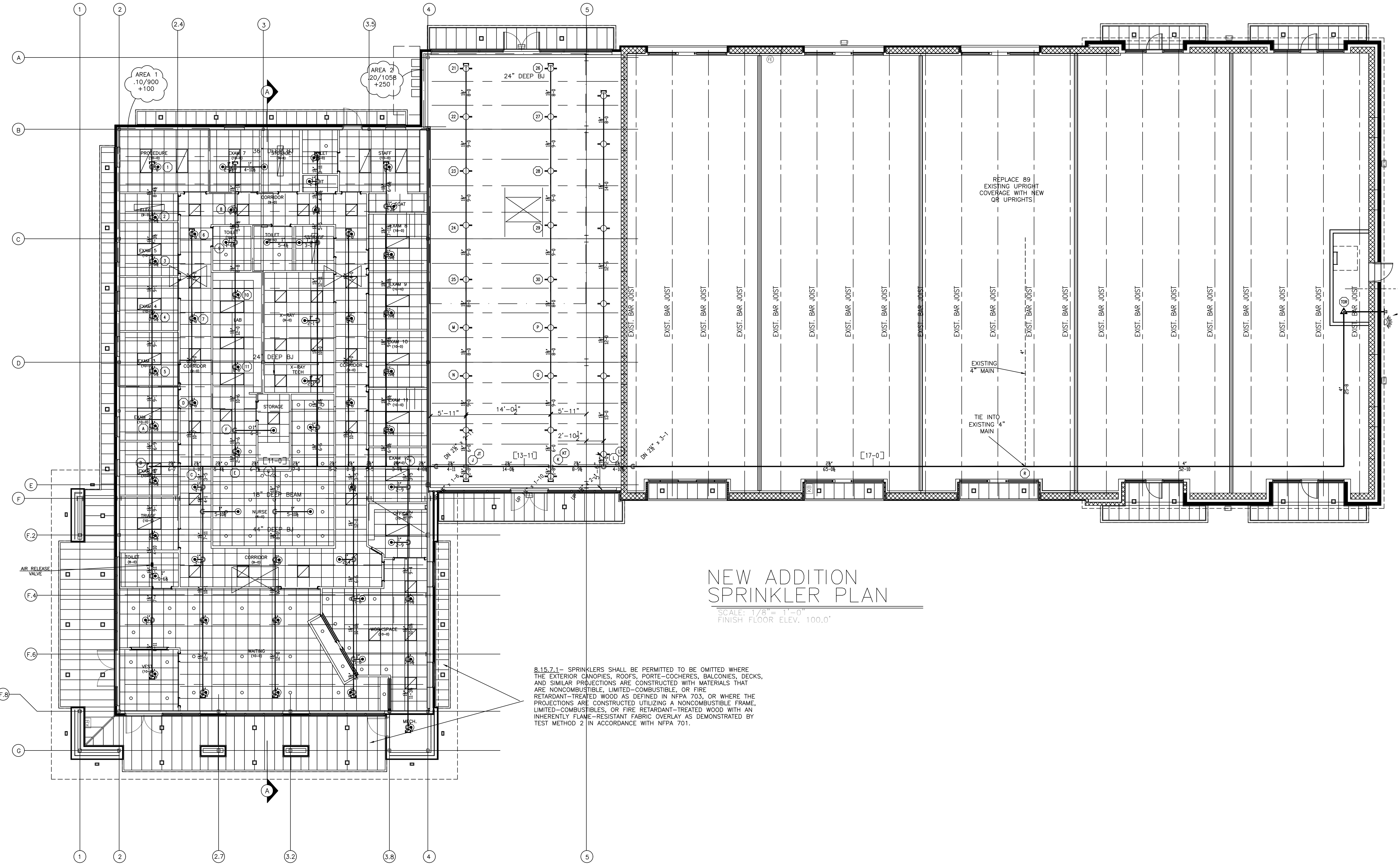
GENERAL NOTES:

- IT IS THE BUILDING OWNERS RESPONSIBILITY TO PROVIDE ADEQUATE HEAT FOR ALL AREAS IN THE BUILDING PROTECTED BY WET SPRINKLER SYSTEMS AND FOR ALL WATER FILLED SUPPLY PIPES, VALVES AND SYSTEM RISERS IN ALL DRY PIPE SPRINKLER SYSTEMS.
- ALL NEW PIPING IS TO BE HYDROSTATICALLY TESTED AT NOT LESS THAN 200 PSI FOR 2 HOURS, OR AT 50 PSI IN EXCESS OF THE MAXIMUM PRESSURE, WHEN THE MAXIMUM PRESSURE TO BE MAINTAINED IS IN EXCESS OF 150 PSI. (PER NFPA 13)
- WHETHER OR NOT INDICATED ON DRAWINGS, THE FOLLOWING ITEMS ARE TO BE PROVIDED:
 - SPRINKLER HEAD CABINET WITH WRENCH (NFPA 13)
 - PROVISIONS FOR FLUSHING CONNECTIONS AND DRAINING OF ALL PIPE. INSPECTORS TEST CONNECTION SHALL BE PROVIDED FOR EACH SYSTEM
 - A) FOR WET PIPE SYSTEMS SEE NFPA 13)
 - B) FOR DRY PIPE SYSTEMS SEE NFPA 13)
- AIR PRESSURE SHALL BE MAINTAINED ON ALL DRY PIPE SYSTEMS BY AN APPROVED AUTOMATIC AIR COMPRESSOR OR PLANT AIR SYSTEM SPECIFICALLY APPROVED FOR AND CAPABLE OF AUTOMATICALLY MAINTAINING THE REQUIRED AIR PRESSURE.
- WET PIPE SYSTEMS SHALL BE PROVIDED WITH A RELIEF VALVE NOT LESS THAN 1/2" IN SIZE. (NFPA 13).
- ALL PIPE 1" SHALL BE SCHEDULE 40 STEEL WITH MALLEABLE IRON FITTINGS.
- ALL PIPE 1 1/4" AND LARGER, SHALL BE SCHEDULE 10 STEEL, WITH GROOVED COUPLINGS AND VICTAULIC® MECHANICAL FITTINGS OR EQUIVALENT.
- ALL MECHANICAL TRADES ARE TO COORDINATE THEIR WORK WITH SPRINKLER WORK AS SHOWN ON THESE PLANS.
- ALL HANGERS AND LOCATIONS ARE TO BE IN ACCORDANCE WITH N.F.P.A. 13.
- ALL PIPING IS TO BE PITCHED IN ACCORDANCE WITH N.F.P.A. 13.
- HYDRAULIC DATA REFERENCE POINTS: (2) BELOW DECK (12)
- CENTER LINE OF PIPE ABOVE FINISH FLOOR (12'-0") BELOW DECK (12)
- PROTECTIVE CAPS ARE TO REMAIN ON THE SPRINKLER HEADS UNTIL AFTER CEILING ARE INSTALLED.
- THE SCOPE OF WORK UNDER THIS CONTRACT IS TO DESIGN AND INSTALL A WET SPRINKLER SYSTEM PER NFPA 13.

WATER DATA
 STATIC 98 PSI
 RESIDUAL 92 PSI
 FLOW 1528 GPM
 BY PORTLAND WATER DISTRICT
 DATE 5/31/16
 HYDRANT ELEV: 98.00' +/-

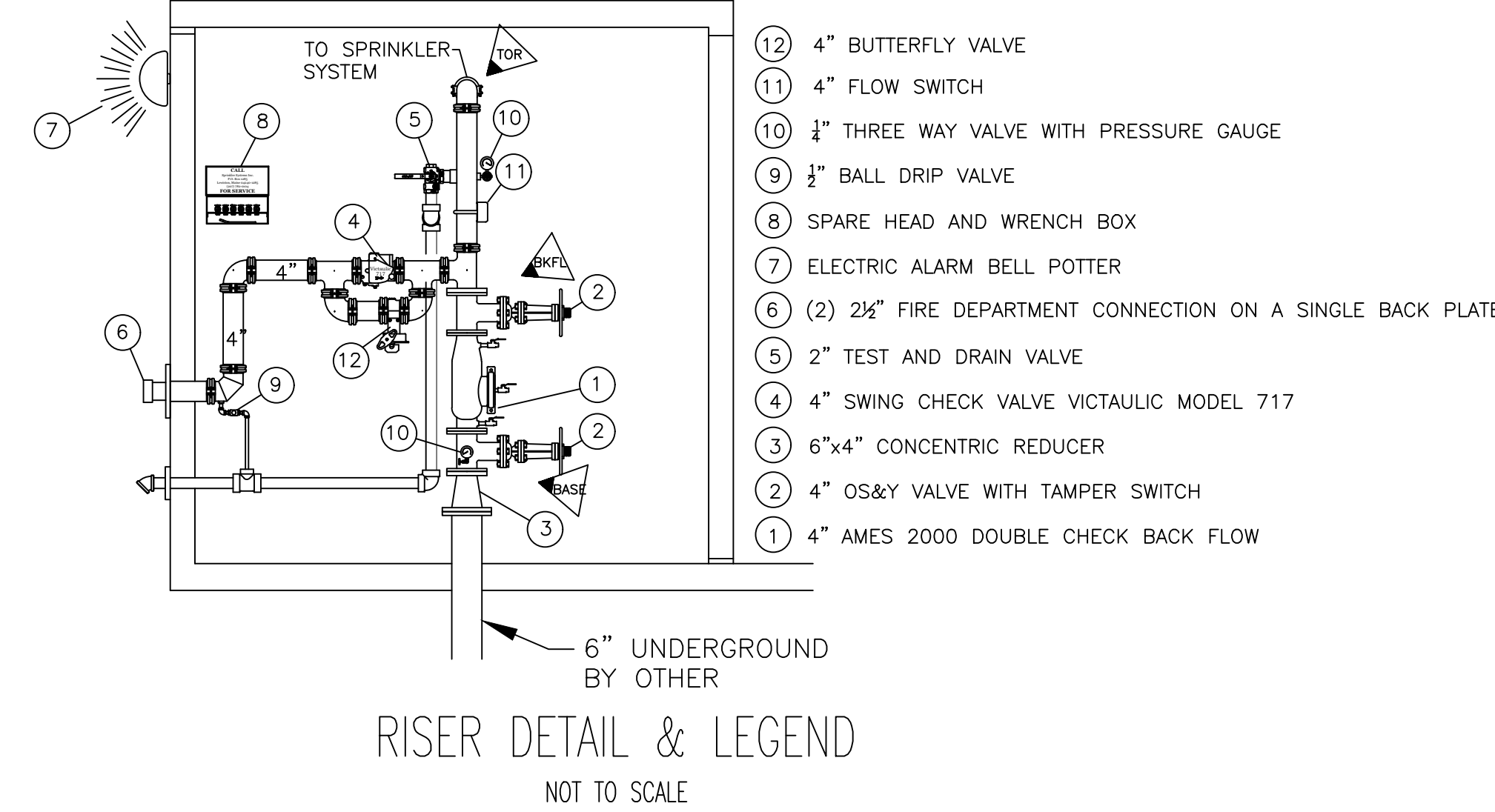


SITE PLAN
SCALE: "NTS"
FINISH FLOOR ELEV. 100.0'



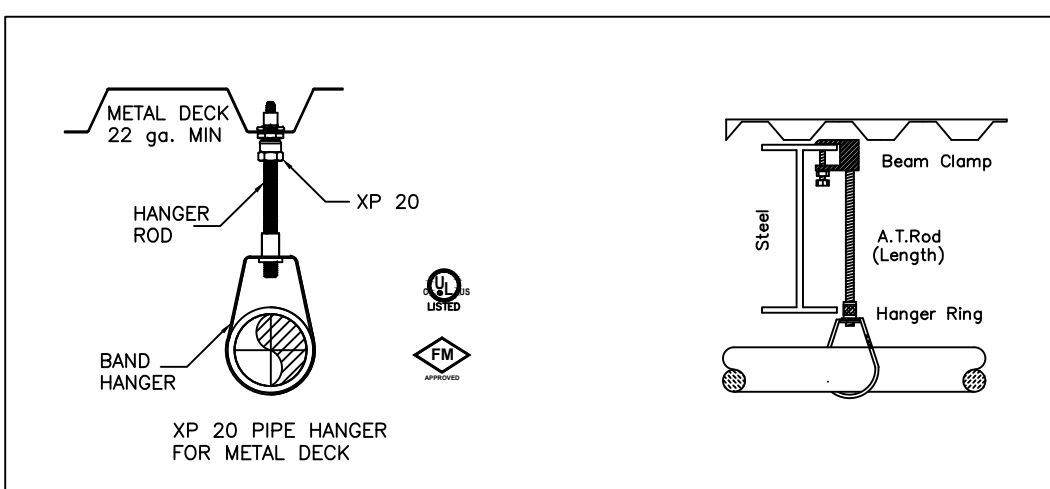
NEW ADDITION SPRINKLER PLAN
SCALE: "NTS"
FINISH FLOOR ELEV. 100.0'

8.15.7.1- SPRINKLERS SHALL BE PERMITTED TO BE OMITTED WHERE THE EXTERIOR CANOPIES, ROOFS, PORTE-COCHERES, BALCONIES, DECKS, AND SIMILAR PROJECTIONS ARE CONSTRUCTED WITH MATERIALS THAT ARE NONCOMBUSTIBLE, LIMITED-COMBUSTIBLE, OR FIRE RETARDANT-TREATED WOOD AS DEFINED IN NFPA 703, OR WHERE THE PROJECTIONS ARE CONSTRUCTED UTILIZING A NONCOMBUSTIBLE FRAME, LIMITED-COMBUSTIBLE, OR FIRE RETARDANT-TREATED WOOD WITH AN INHERENTLY FLAME-RESISTANT FABRIC OVERLAY AS DEMONSTRATED BY TEST METHOD 2 IN ACCORDANCE WITH NFPA 701.



RISER DETAIL & LEGEND
NOT TO SCALE

- Type of Hazard **CH2/LIGHT**
- Deflector Distance **PER SPEC**
- Pipe Type Used **BLK SCH 10/40**
- Sprinkler Area **PER SPEC**
- Type of Construction **NON-COMBUSTIBLE**
- Maximum Spacing Allowed **PER NFPA 13**
- PIPE SIZING METHOD: PIPE SCHEDULE HYDRAULICALLY CALCULATED
- ALL HANGERS AND LOCATIONS TO BE IN ACCORDANCE WITH N.F.P.A. PAMPHLET NO. 13
- HIGH DEGREE TEMPERATURE SPRINKLER HEADS TO BE INSTALLED IN ACCORDANCE WITH N.F.P.A. PAMPHLET NO. 13



HANGER DETAILS
N.F.P.A.

HANGERS

AS SHOWN IN DETAIL

ABBREVIATIONS

B Bottom of Beam
 D Bottom of Deck
 P Bottom of Pipe
 HW Head Valve
 N & C Nipple and Cap
 NIC Not in Contract
 NTS Not to Scale
 O&B Open Bar Joists
 PRV Pressure Red Valve
 RM Roof Membrane Standpipe
 T&B Top of Beam
 TOP Top of Pipe
 TOS Top of Steel
 U&S Unless Otherwise Noted
 CL Centerline
 N&C No Automatic Sprinklers
 O&A Open to Above

CONTRACT RESPONSIBILITIES

ITEM	FFC	OTHERS
STREET CORN		
UGD MAN		
EXCAVATION		
FLUSHING		
WIRING		
PAINTING		
TAMPER SWITCHES		
FLOW SWITCHES		
STREET CORN		

SPRINKLER HEAD LEGEND

SYMBOL	MAKE	MODEL	SIN	FINISH	TYPE	TEMP	NPT	ORIFICE	K-FACTOR	TOTAL
○	RELIABLE	F1FR 56	RA1425	BRONZE	UPRIGHT	200° F	1/2"	1/2"	5.6	24
○	RELIABLE	F1FR 56	RA1414	WHITE	SEMI-REC EDGEMOUNT	155° F	1/2"	1/2"	5.6	58
TOTAL										79

SUBMITTALS

SENT TO	DATE SENT	DATE RECEIVED
I S O	03/30/12	
F M		
L M		
I R I		
L A		
STATE FIRE		
LOCAL FIRE		
LOCAL WATER		
OWNER		

LICENSE# 093
R.M.S.# 278

PERMIT # ????

P.O. BOX 1285
LEWISTON MAINE
04243-1285

191 MARGINAL WAY RETAIL
191 MARGINAL WAY
PORTLAND, ME 04101

CONTRACT WITH LANDRY/FRENCH CONSTRUCTION

SYSTEM TYPE	NO.	DATE	REVISIONS	DESCRIPTION
WET				
DRY				
DELUGE				
PREACTION				
ME LIFE				
HYDRO-PRO				

TOTAL SPKRS ON JOB 82

SHEET# 1 of 1

JOB# 17082

SUBMITTAL COPY

