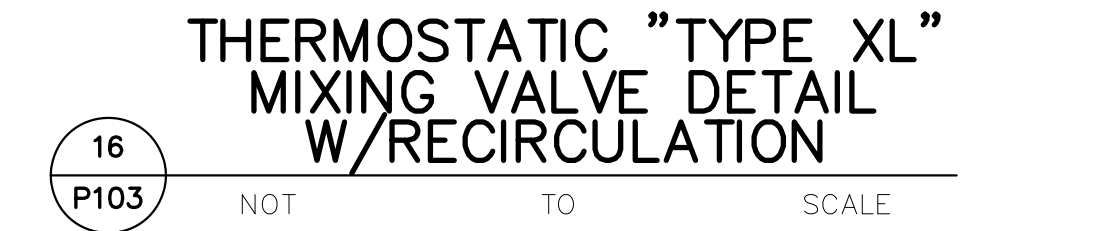
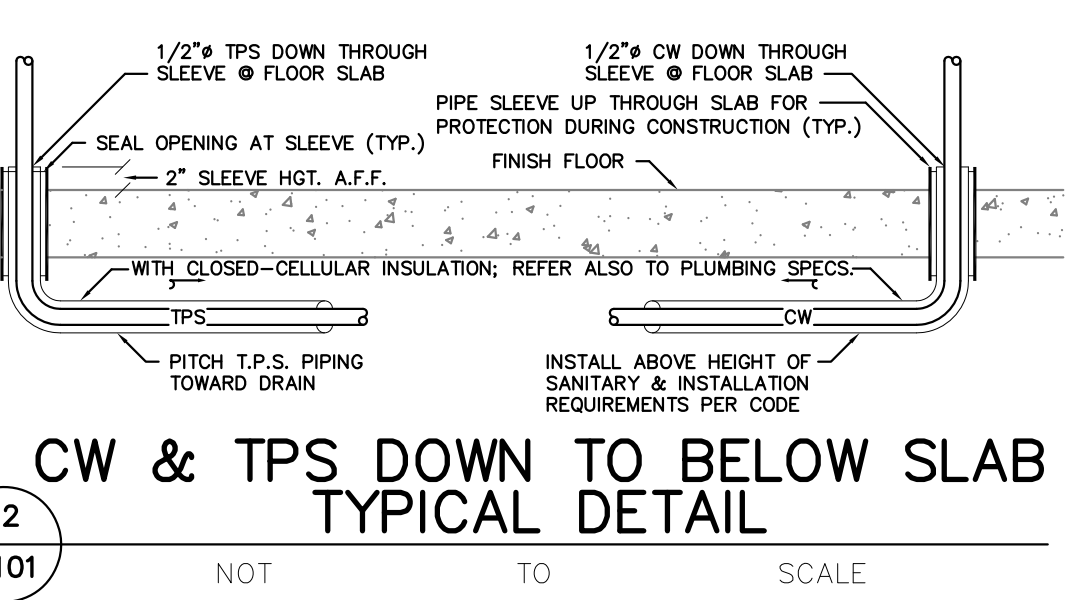
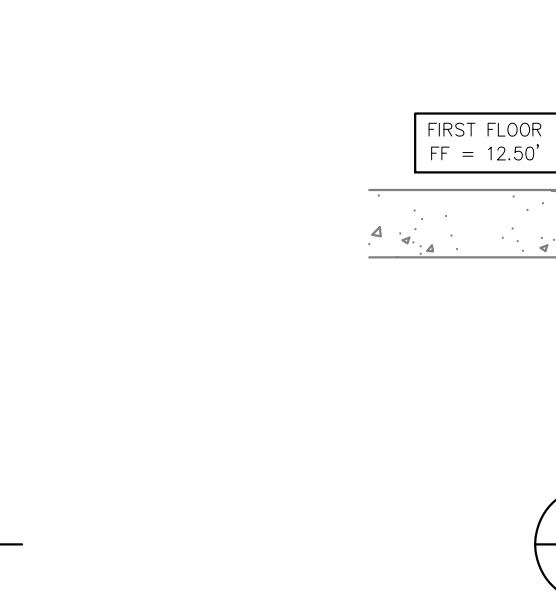
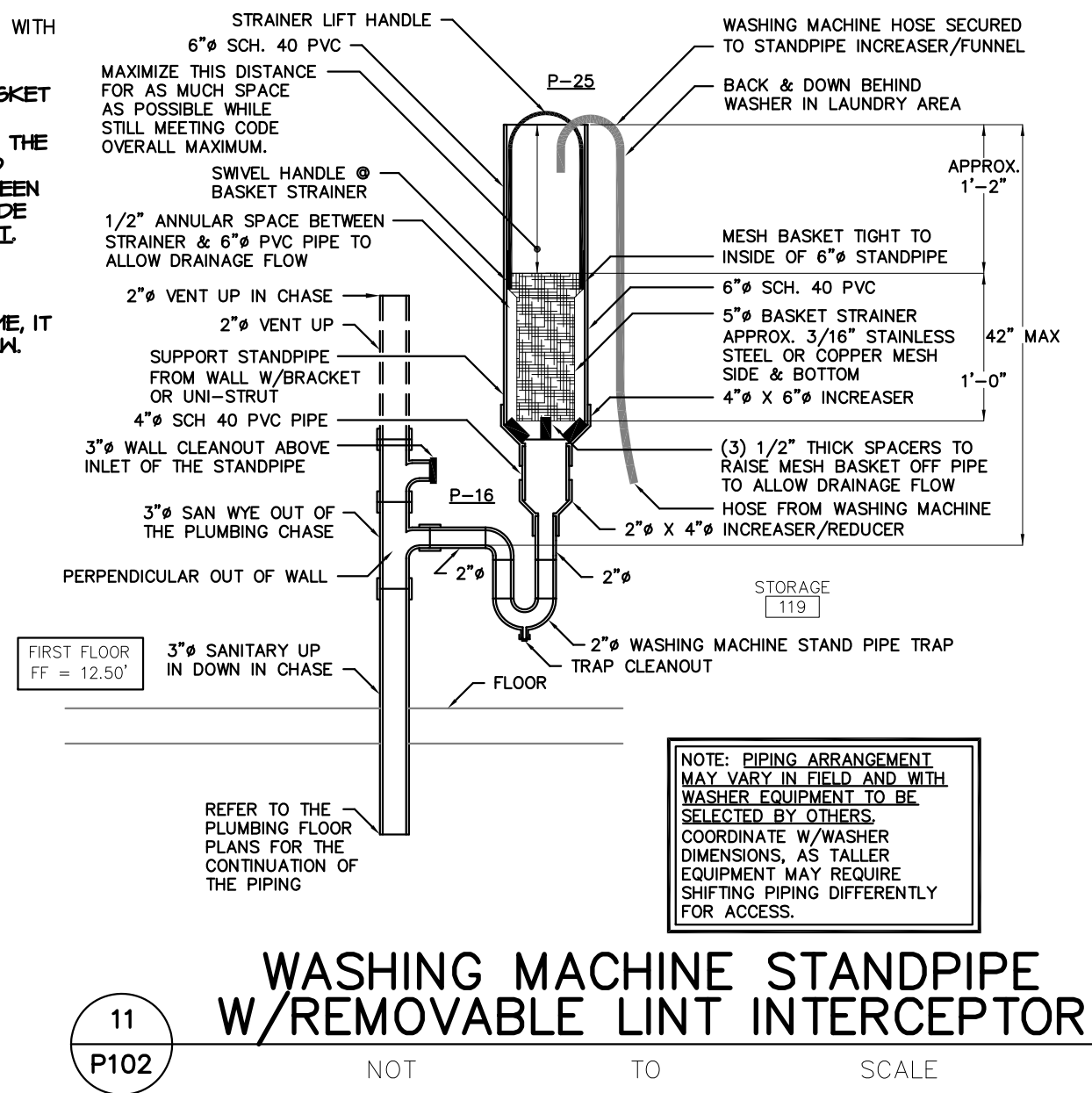


A LINT INTERCEPTION DEVICE IS REQUIRED AT THE CLOTHES WASHER TO COMPLY WITH 2015 UPC SECTION 1012.0 :

INTENT: INCREASE/FUNNEL ON WASHING MACHINE STANDPIPE WITH MESH BASKET SUITABLE TO INTERCEPT LINT (BUT NOT TOO FINE AS TO IMPEDE FLOW WHEN CLEAN). THERE MUST BE SPACE ON SIDES AND BOTTOM TO ALLOW FLOW OF THE FILTERED DRAINAGE. MESH BASKET MUST BE ABLE TO BE EASILY REMOVED (WITH HANDLE) AND CLEANED (NOT TOO NARROW). SPACE ABOVE MESH SCREEN BASKET ALLOWS FOR SOME CAPACITY SO FUNNEL WONT OVERFLOW. PROVIDE SIGNAGE AT WASHER IDENTIFYING LINT INTERCEPTOR CLEANING REQUIREMENT. PROVIDE WRITTEN INSTRUCTION IN OWNER'S MANUAL AND DEMONSTRATE MAINTENANCE PROCEDURE TO OWNER'S DESIGNATED PERSONNEL.

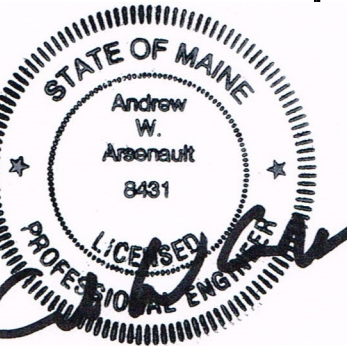
BECAUSE THERE ARE FEW CHOICES IN OFF-THE-SHELF PRODUCTS AT THIS TIME, IT WOULD BE PRUDENT TO SHOP ASSEMBLE AND TEST THE DEVICE SHOWN BELOW. COORDINATE WITH WASHER EQUIPMENT DIMENSIONS IN FIELD.

SEE SNAPSHOT BELOW OF AN INTERCEPTION DEVICE THAT COMPLETELY MET THE ABOVE DESCRIBED AND DETAILED INTENT. (PERFORATIONS IN BASKET ARE NOT DEPICTABLE IN PHOTO)



convenient MD
191 Marginal Way
Portland, Maine

DESIGN DAY
MECHANICALS INC
100 W. GILFORD STREET, MANCHESTER, NH 03102
PH: (603) 888-5077
FAX: (603) 888-5177



DENNIS MIRES, P.A.
THE ARCHITECTS
697 Union Street, Manchester, NH
603-625-9548 FAX: 603-625-1067

This seal is valid only if the holder complies with the provisions of the laws and regulations of the State of Maine. The holder of this seal is responsible for the accuracy of the information provided. The seal is not valid if the holder is not a member of the Maine Professional Engineers Association.

PLUMBING DETAILS

SCALE: AS NOTED
revisions:

date: 8/24/17
proj. no. 2014-055
DDM #1016

P105

PLB SHEET 5 OF 7