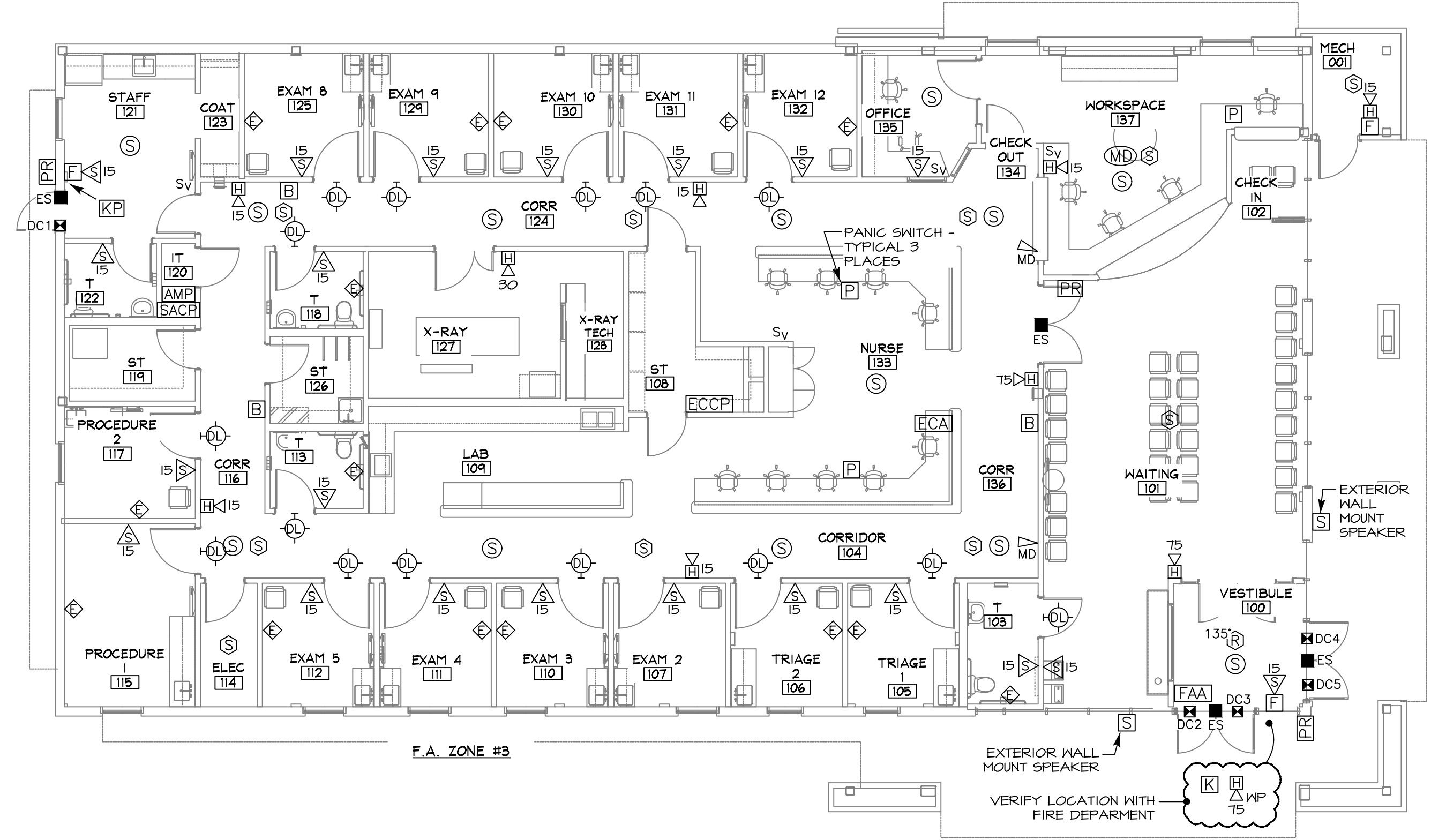


FIRE ALARM LEGEND					
SYMBOL	DESCRIPTION	MANUFACTURER	PART NO.	MOUNTING	REMARKS
[FACP]	ADDRESSABLE FIRE ALARM CONTROL PANEL - EXISTING	-	-	-	SEE NOTE 6
[FAPS]	FIRE ALARM POWER SUPPLY	-	-	-	SEE NOTE 6
[P]	PULL STATION	-	-	-	SEE NOTE 6
[S]	ADDRESSABLE, 24VDC, PHOTO-ELECTRIC SMOKE DETECTOR WITH BASE	-	-	CEILING MOUNT	SEE NOTE 6
[SD]	ADDRESSABLE, 24VDC, PHOTO-ELECTRIC DUCT SMOKE DETECTOR WITH BASE, HOUSING & SAMPLING TUBE SIZED AS REQUIRED	-	-	UNIT MOUNT	LOCATED IN FIELD BY MC - INSTALLED & WIRED BETWEEN UNIT BY MC - SEE NOTE 6
[R]	REMOTE ALARM INDICATOR WITH KEY TEST SWITCH - KEY TYPE PER FIRED DEPARTMENT'S REQUIREMENTS	-	-	FLUSH WALL MOUNT	INSTALL IN LOCATION APPROVE BY THE FIRE DEPARTMENT - SEE NOTE 6
135° [R]	ADDRESSABLE, 24VDC, 135 DEGREE FIXED TEMPERATURE PLUS RATE-OF-RISE HEAT DETECTOR WITH BASE	-	-	CEILING MOUNT	SEE NOTE 6
[CM]	ADDRESSABLE CONTROL MODULE	-	-	LOCATION UNKNOWN FIELD VERIFY	SEE NOTE 6
[MM]	INDIVIDUAL ADDRESSABLE MONITOR MODULE	-	-	AT DEVICE	SEE NOTES 6 & 13
[H]	HORN/STROBE - MULTI-CANDELA	-	-	FLUSH WALL MOUNT	SEE NOTES 6, 8 & 11
[S]	STROBE - MULTI-CANDELA	-	-	FLUSH WALL MOUNT	SEE NOTES 6, 8 & 11

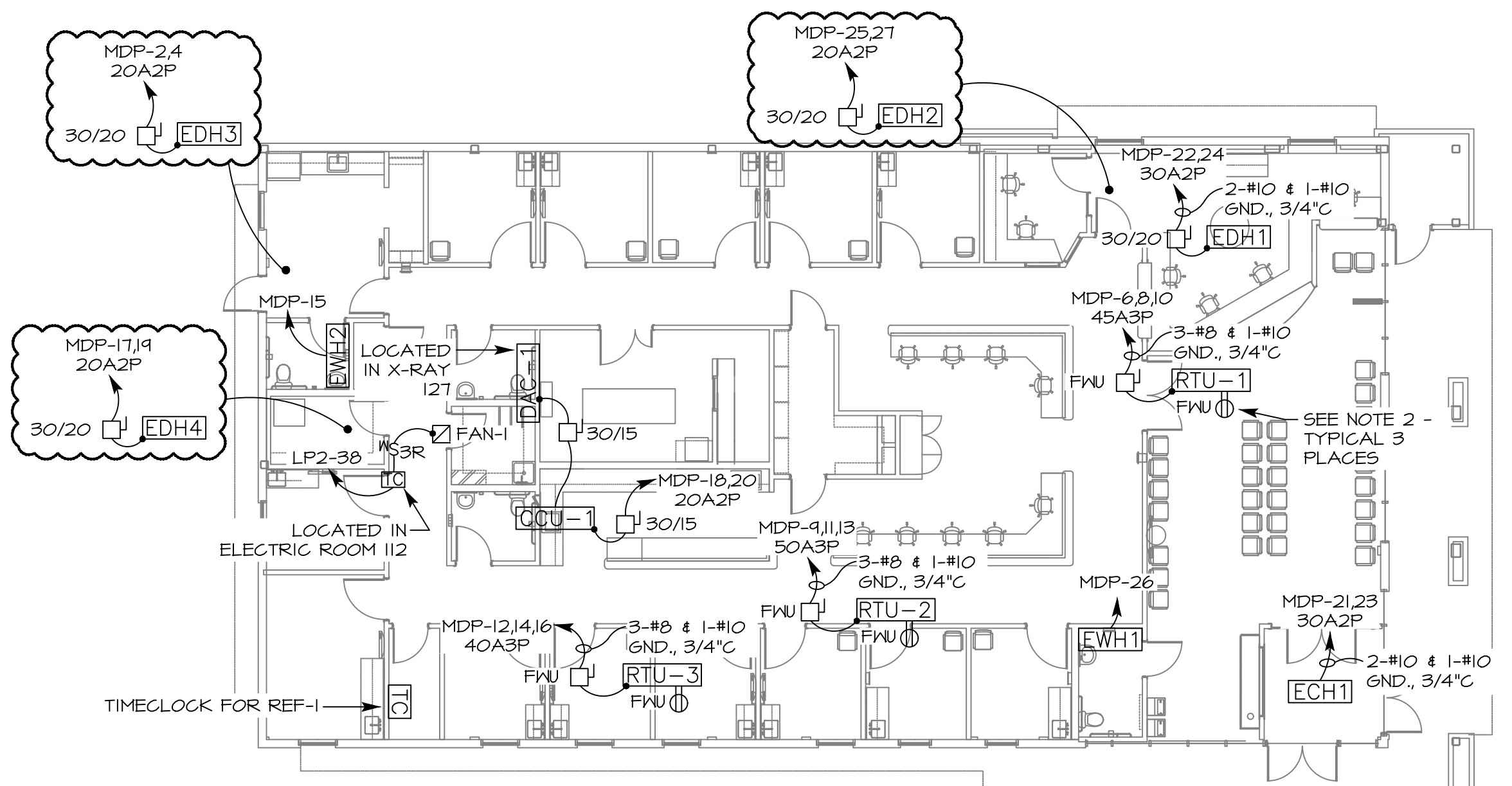
**FIRE ALARM LEGEND NOTES**

- ALL WIRING SHALL COLOR CODED AND SHALL BE INSTALLED TO THE MANUFACTURER'S SPECIFICATIONS.
- ALL FIRE ALARM EQUIPMENT SHALL BE APPROVED BY THE FIRE DEPARTMENT BEFORE PURCHASING AND SHALL BE INSTALLED TO THE REGULATIONS OF THE FIRE DEPARTMENT.
- ALL DEVICES SHALL BE INSTALLED TO MEET THE REQUIREMENTS OF THE AMERICANS WITH DISABILITIES ACT.
- ALL WIRING SHALL BE SOLID COPPER AND INSTALLED IN METAL RACEWAYS. "FPL" SERIES CABLE MAY BE USED IN LOCATIONS APPROVED BY THE FIRE DEPARTMENT, HOWEVER ALL WIRING IN HALLS OR INSTALLED EXPOSED SHALL BE INSTALLED IN CONDUIT.
- PROVIDE ADDITIONAL MODULES, POWER SUPPLIES, SYNCHRONIZATION MODULES AND BATTERIES FOR A COMPLETE AND CODE COMPLIANT EXPANDED FIRE ALARM SYSTEM.
- STROBES SHALL BE MOUNTED WITH THE BOTTOM OF THE STROBE LENS AT 80" AFF. STROBE PLACEMENT IS BASED ON UL 1471 "ROOM SPACING ALLOCATION FOR WALL MOUNTED VISUAL APPLIANCES". IF STROBES ARE INSTALLED IN DIFFERENT LOCATIONS THAN SHOWN ON PLANS VERIFY LOCATION MEETS UL 1471 PLACEMENT GUIDELINES AND UPSIZED STROBE CANDELA SETTING IF REQUIRED TO MEET UL 1471. ALL STROBE CIRCUITS SHALL BE SYNCHRONIZED. 15, 30 AND 75 SHOWN ON PLANS INDICATES CANDELA SETTINGS FOR STROBES.
- FURNISH, INSTALL AND WIRE END-OF-LINE RESISTORS AS REQUIRED BY THE FIRE ALARM SYSTEM MANUFACTURER AND IN THE LOCATION DIRECTED BY THE FIRE DEPARTMENT.
- ALL NEW FIRE ALARM DEVICES SHOWN TO BE INSTALLED FOR THIS PROJECT SHALL BE OF THE SAME TYPE AND SHALL BE FROM THE SAME MANUFACTURER AS THE FIRE ALARM SYSTEM EQUIPMENT INSTALLED IN THE BUILDING AND SHALL BE UL LISTED FOR COMPATIBILITY WITH THE SHELL BUILDING FIRE ALARM CONTROL PANEL AND NOTIFICATION APPLIANCE BOOSTER POWER SUPPLY PANEL.
- THE HORN/STROBE AND STROBE CIRCUITS SHOWN ON THE FIRE ALARM RISER WERE BASED ON THE CURRENT RATINGS OF WHEELLOCK TYPE "H5" HORN/STROBES AND TYPE "ST" STROBES. ACTUAL CONNECTIONS OF THESE DEVICES TO THE "BPS" SHALL BE AS DETERMINED BY THE FIRE ALARM SYSTEM MANUFACTURER'S REPRESENTATIVE.
- THE LOCATIONS AND QUANTITIES OF THE FIRE EXTINGUISHERS WITH MONITORING CAPABILITIES WAS UNKNOWN AT THE TIME OF THIS DESIGN. THE ELECTRICAL CONTRACTOR SHALL VERIFY LOCATIONS AND QUANTITIES WITH THE ARCHITECT AND SHALL FURNISH, INSTALL AND WIRE TWO ADDRESSABLE MONITOR MODULES AND INSTALL AND WIRE TWO FIRE EXTINGUISHER MODULES AS SHOWN IN THE FIRE EXTINGUISHER CONNECTION DETAIL AND ON THE FIRE ALARM RISER.
- THE MONITORING OF THE FIRE EXTINGUISHERS SHALL BE PROGRAMMED AS ZONE FOR TROUBLE AND ALARM IN THE SHELL BUILDING FIRE ALARM CONTROL PANEL "FACP" AND SHALL BE VISIBLY IDENTIFIED AS SUCH ON THE "FACP" LCD SCREEN UPON ACTIVATION OF TROUBLE OR ALARM CONDITION OF ANY OF THE FIRE EXTINGUISHERS LOCATED IN THIS PROJECT. AN AUDIBLE SOUND SHALL ALSO OCCUR AT THE "FACP" UPON EITHER CONDITION.
- VERIFY KEYING REQUIREMENTS FOR THE REMOTE ALARM INDICATOR WITH KEY TEST SWITCH WITH THE FIRE DEPARTMENT.



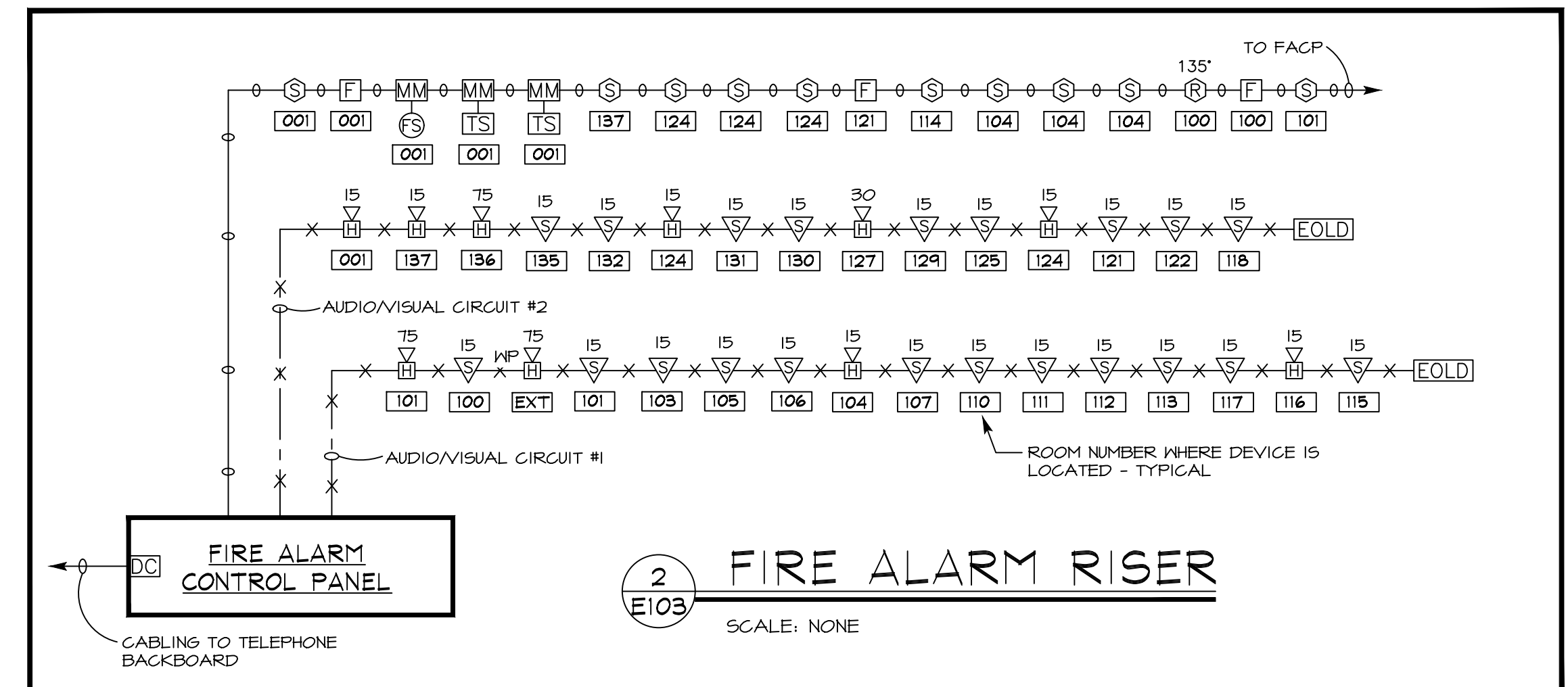
PROPOSED F.A. ZONES	
ZONE	AREA
1	SPRINKLER FLOW
2	SPRINKLER SUPERVISORY
3	PULL/SMOKES
4	SYSTEM TROUBLE

**FLOOR PLAN - SPECIAL SYSTEMS**  
SCALE: 1/8" = 1'-0"



**FLOOR PLAN - MECHANICAL**  
SCALE: 3/32" = 1'-0"

- FLOOR PLAN - MECHANICAL NOTES**
- SEE MECHANICAL PLANS FOR FINAL EQUIPMENT LOCATIONS.
  - ROOFTOP UNIT RECEPTACLES SHALL BE FED FROM CIRCUIT LP1-36.

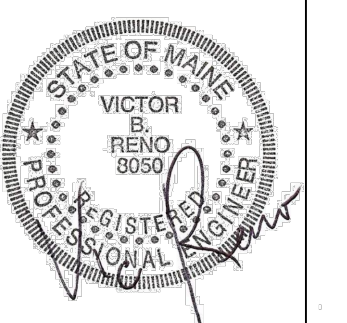


**FIRE ALARM RISER**  
SCALE: NONE

\\dms\shared\Convenient MD - Wintham-2011\074\Arch\2011074\0120504\_Convenient MD.AC\_15.pln Monday, May 21, 2012

Convenient MD  
191 Marginal Way  
Portland, Maine

RENO ENGINEERING  
& LIGHT DESIGN  
MARLOW, NH 03456  
603.446.9426, 603.446.9731 (F)  
EMAIL: renoengr@midengr.com  
Project Number: 1707R



DENNIS MIRES, P.A.  
ARCHITECTS  
697 Union Street, Manchester, NH  
603-625-5968 FAX 603-625-1067

The material contained in these drawings and the design of the same are the property of Dennis B. Mires, Professional and shall be held in confidence and shall not be used, copied, or reproduced in any form without the written permission of Dennis B. Mires, unless otherwise indicated.

Special Systems

revisions:

date: 03/24/2017  
proj. no.: 2014-055

E103