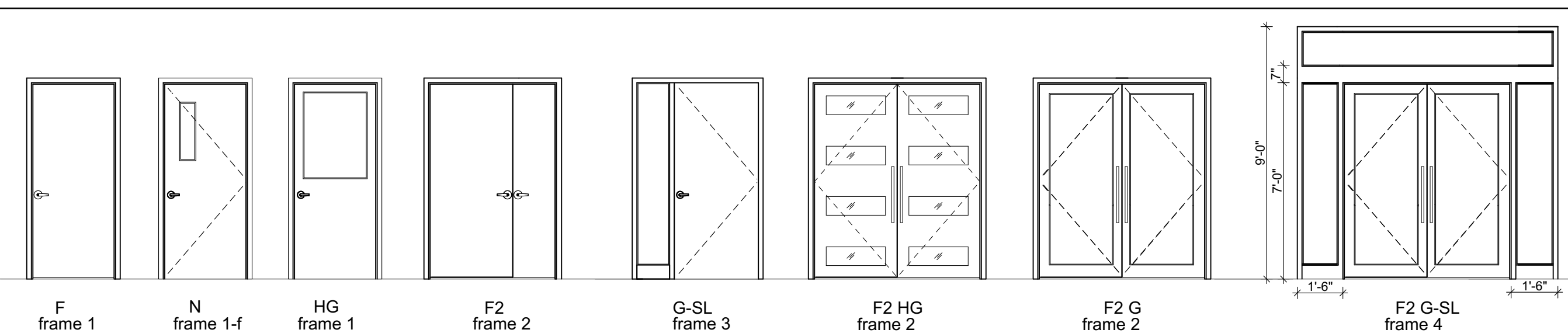


DOOR AND FRAME SCHEDULE

Door No.	From	To Zone	W x H Size	Swing	Door			Frame		Fire Rating			Lockset	Notes / Remarks	
					Core	Fin	Elev	Glazing	Mat	Fr Type	Label	Closer			Panic
D001	VESTIBULE		6'-0"x7'-0"	M	BY LANDLORD			BY LANDLORD			--	YES	YES	YES	DOORS & AUTOMATIC OPERATOR TO BE PROVIDED BY LANDLORD.
D002	VESTIBULE		6'-0"x7'-0"	M	BY LANDLORD			BY LANDLORD			--	YES	YES	YES	DOORS & HARDWARE TO BE PROVIDED BY LANDLORD.
D100	WAITING	VESTIBULE	6'-0"x7'-0"	M	SOLID C.- MAPLE NATURAL STAIN		F2 G-SL	1/4" TEMPERED SAFETY	WOOD	2	--	YES		FOB	AUTOMATIC OPERATED BOTH LEAFS- BUTTOM LOCATION TO BE CONFIRMED BY ARCHITECT. PROVIDE 2'-0" LONG (1" SQUARE) VERTICAL PUSH/PULL BARS BOTH SIDES EACH LEAF. OPERATORS TO BE BRONZE TO MATCH WOOD DOOR/TRIM
D101	CORRIDOR	WAITING	6'-0"x7'-0"	M	SOLID C.- MAPLE NATURAL STAIN		F2 HG	1/4" TEMPERED SAFETY, FROSTED	WOOD	2	--	YES	--	FOB	PROVIDE 2'-0" LONG (1" SQAURE) PUSH/PULL BARS BOTH SIDES EACH LEAF & STAINLESS STEEL PUSH PLATE ON NURSE SIDE OF DOOR LEAF. GLAZING TO BE FROSTED/ SANDBLASTED. FOB ACCESS CONTROL. PROVIDE ELECTRIC STRIKE, MAGNETIC LOCK & BUTTOM CONTROL AT WORKSPACE137
D103	TOILET	WAITING	3'-0"x7'-0"	R	SOLID C.- PAINTED HD WOOD		F	NO	H.M.	1	--	YES	--	PRIVACY	LOCKSET SHOULD INCLUDE INDICATOR (IN USE/VACANT)
D105	CORRIDOR	TRIAGE 1	3'-6"x7'-0"	R	SOLID C.- PAINTED HD WOOD		F	NO	H.M.	1	--	--	--	--	
D106	CORRIDOR	TRIAGE 2	3'-6"x7'-0"	R	SOLID C.- PAINTED HD WOOD		F	NO	H.M.	1	--	--	--	--	
D107	CORRIDOR	EXAM 2	3'-6"x7'-0"	R	SOLID C.- PAINTED HD WOOD		F	NO	H.M.	1	--	--	--	--	
D108A	STORAGE	NURSE	3'-0"x7'-0"	R	SOLID C.- PAINTED HD WOOD		F	NO	H.M.	1	--	--	--	KEYED	
D108B	NURSE	CORRIDOR	3'-0"x7'-0"	R	SOLID C.- PAINTED HD WOOD		F	NO	H.M.	1	--	--	--	KEYED	
D110	CORRIDOR	EXAM 3	3'-6"x7'-0"	R	SOLID C.- PAINTED HD WOOD		F	NO	H.M.	1	--	--	--	--	
D111	CORRIDOR	EXAM 4	3'-6"x7'-0"	R	SOLID C.- PAINTED HD WOOD		F	NO	H.M.	1	--	--	--	--	
D112	CORRIDOR	ELEC	3'-0"x7'-0"	R	SOLID C.- PAINTED HD WOOD		F	NO	H.M.	1	--	--	--	--	
D112	CORRIDOR	EXAM 5	3'-6"x7'-0"	R	SOLID C.- PAINTED HD WOOD		F	NO	H.M.	1	--	--	--	--	
D113	CORRIDOR	TOILET	3'-0"x7'-0"	R	SOLID C.- PAINTED HD WOOD		F	NO	H.M.	1	--	YES	--	PRIVACY	LOCKSET SHOULD INCLUDE INDICATOR (IN USE/VACANT)
D115	CORRIDOR	PROCEDURE 1	3'-6"x7'-0"	R	SOLID C.- PAINTED HD WOOD		F	NO	H.M.	1	--	--	--	--	
D117	CORR	PROCEDURE 2	3'-6"x7'-0"	R	SOLID C.- PAINTED HD WOOD		F	NO	H.M.	1	--	--	--	--	
D118	CORR	STORAGE	3'-0"x7'-0"	R	SOLID C.- PAINTED HD WOOD		F	NO	H.M.	1	--	YES	--	KEYED	
D119	CORR	STORAGE/JAN	3'-0"x7'-0"	R	SOLID C.- PAINTED HD WOOD		F	NO	H.M.	1	--	--	--	KEYED	
D120	IT	CORR	3'-0"x7'-0"	R	SOLID C.- PAINTED HD WOOD		F	NO	H.M.	1	--	--	--	KEYED	
D121	CORRIDOR	STAFF	3'-0"x7'-0"	R	SOLID C.- PAINTED HD WOOD		F	NO	H.M.	1	--	YES	--	--	
D121A	STAFF		3'-0"x7'-0"	R	BY LANDLORD			BY LANDLORD							DOORS & HARDWARE TO BE PROVIDED BY LANDLORD. TENANT G.C TO PROVIDE FOB ACCESS CONTROL, CO-ORDINATE WITH LANDLORD'S G.C
D122	STAFF	TOILET	3'-0"x7'-0"	R	SOLID C.- PAINTED HD WOOD		F	NO	H.M.	1	--	YES	--	PRIVACY	LOCKSET SHOULD INCLUDE INDICATOR (IN USE/VACANT)
D125	CORRIDOR	EXAM 8	3'-6"x7'-0"	R	SOLID C.- PAINTED HD WOOD		F	NO	H.M.	1	--	--	--	--	
D126	CORRIDOR	TOILET	3'-0"x7'-0"	R	SOLID C.- PAINTED HD WOOD		F	NO	H.M.	1	--	--	--	PRIVACY	LOCKSET SHOULD INCLUDE INDICATOR (IN USE/VACANT)
D127	CORRIDOR	X-RAY	4'-6"x7'-0"	M	SOLID C.- PAINTED HD WOOD		F2	NO	H.M.	2	--	--	--	PRIVACY	DOOR PANELS TO BE SOLID WOOD. RADIATION WARNING LIGHT TO BE INSTALLED OVER DOOR TO TURN ON WHEN X-RAY ROTOR IS DEPRESSED. PROVIDE ASTRAGAL TO DOORS FOR PRIVACY
D129	CORRIDOR	EXAM 9	3'-6"x7'-0"	R	SOLID C.- PAINTED HD WOOD		F	NO	H.M.	1	--	--	--	--	
D130	CORRIDOR	EXAM 10	3'-6"x7'-0"	R	SOLID C.- PAINTED HD WOOD		F	NO	H.M.	1	--	--	--	--	
D131	CORRIDOR	EXAM 11	3'-6"x7'-0"	R	SOLID C.- PAINTED HD WOOD		F	NO	H.M.	1	--	--	--	--	
D132	CORRIDOR	EXAM 12	3'-6"x7'-0"	R	SOLID C.- PAINTED HD WOOD		F	NO	H.M.	1	--	--	--	--	
D135	WORKSPACE	OFFICE	3'-0"x7'-0"	R	SOLID C.- PAINTED HD WOOD		G-SL	NO	H.M.	3	--	--	--	KEYED	2'-0" SIDELITE V.I.F -1/4" TEMPERED SAFETY GLASS. PROVIDE HORIZONTAL PRIVACY BLINDS
D136	CHECK OUT	WORKSPACE	3'-0"x7'-0"	R	SOLID C.- PAINTED HD WOOD		F	NO	H.M.	1	--	YES	--	PRIVACY	



TYPICAL INTERIOR DOORS & FRAMES:

1 3/4" 7-PLY SOLID CORE FLUSH DOOR. PAINTED WOOD DOORS TO BE HD WD VENEER, FACTORY PRIMED & FIELD PAINTED, 2 TOP COATS, COLOR BY ARCHITECT. QUATER SAWN WHITE OAK VENEER DOORS TO BE VERTICAL GRAIN ALIGNMENT, NATURAL STAIN, COLOR BY ARCHITECT. PRE FINISHED PARTICLE CORE W/ 30 PCF DENSITY. MINERAL CORE AT RATED DOORS, MATCHING LAMINATED STILES. ADHESIVES SHALL CONTAIN NO FORMALDEHYDE. 1/4" TEMPERED GLASS AT VISION PANELS. 1/4" WIRED GLASS AT FIRE RATED OPENINGS.

HOLLOW METAL FRAMES. 2" DRYWALL FULLY WELDED 18 GA., 1/2" BACKBEND., 16 GA. AT FIRE RATED OPENINGS. PRIMED. COMPRESSION ANCHORS & 7 GA. HARDWARE REINFORCEMENTS.

HARDWARE NOTES:

- FINISH TO BE 626 SATIN CHROMIUM PLATED.
- CYLINDRICAL LOCKSETS TO BE LEVERS; SARGEN GRADE 1 MORTISE TYPE LOCK, 8200 SERIES
- LEVER SET FUNCTIONS AS NOTED, TO BE CONFIRMED WITH OWNER.
- LEVER STYLE TO BE SARGENT 8200 SERIES "B" LEVER STYLE WITH "LN" ROSE
- PROVIDE SMALL FORMAT INTERCHANGEABLE CORES.
- PROVIDE DOOR STOPS FOR ALL DOORS, WALL STOPS WHEREVER POSSIBLE.

7. DOME TYPE FLOOR STOPS OF THE PROPER HEIGHT WHERE WALL STOPS CANNOT BE USED.
8. PUSH PLATES TO BE 4" WIDE x 16" HIGH.
9. DOOR PULLS TO BE ASSA ABLOY ROCKWOOD RM7900 SQUARE END PULLS, 3/4"x3/4" x 24" CTC OR ARCHITECT APPROVED EQUAL
10. PROTECTIVE PLATES: KICK (8"), MOP (4"), AND ARMOR (36") x WIDTH OF DOOR LESS 1". FOUR BEVELED EDGES WITH MATCHING FASTENERS
11. CLOSERS TO BE LCN 4010/4110/1520/1460 SERIES OR SARGENT 280/1430
12. ALL DOORS TO HAVE AUTOMATIC DOOR OPERATORS SHALL HAVE PUSH BUTTON LOCATIONS CONFIRMED BY ARCHITECT PRIOR TO INSTALLATION.
13. PROVIDE COAT HOOKS TO BACK OF ALL EXAM, TRIAGE, TOILET ROOM DOORS. TO BE 626 SATIN CHROMIUM PLATED TO MATCH DOOR HARDWARE. STYLE TO BE ASSA ABLOY ROCKWOOD RM821 COAT HOOK WITH ROUND ROSE OR APPROVED EQUAL

DOOR D101 HARDWARE NOTES:

EACH DOOR LEAF TO HAVE MAG LOCK. MAG LOCKS TO BE UNLOCKED BY EITHER, FOB ACCESS READER ON WAITING AREA SIDE OF DOOR, "PUSH TO EXIT" BUTTON ON NURSE SIDE OF DOOR, OR MOTION DETECTOR ON NURSES SIDE OF DOOR. DOOR HARDWARE IS TO MEET NFPA 101, SECTION 7.2.1.6.2 REQUIREMENTS. MAG LOCKS SHALL UNLOCK FOR 30 SECONDS PER CODE WHEN DEACTIVATED BY 1 OF THE ABOVE METHODS. MAG LOCKS MUST ALSO BE CONNECTED TO FIRE ALARM SYSTEM TO ENSURE MAG LOCKS ARE UNLOCKED AUTOMATICALLY IN EVENT OF A FIRE. SEE NFPA 101, SECTION 7.2.1.6.2 FOR ANY ADDITIONAL REQUIREMENTS

WINDOW SCHEDULE						
MARK	Outside View	Qty	WxH	TYPE	Material	NOTES
W01		1	6'-0"x2'-6"	FIXED	QTR SAWN WHITE OAK	TRANSOM AND HEAD OF WINDOW TO ALIGN WITH ADJACENT DOOR HEAD AND TRANSOMS. 1x6 HEAD & 1x4 JAMB TRIM TYPICAL
W02		1	3'-0"x4'-0"	FIXED	HOLLOW METAL	HM FRAME. HEAD TO ALIGN WITH DOOR D135. PROVIDE HORIZONTAL PRIVACY BLINDS
W03		1	3'-0"x3'-0"	FIXED	HOLLOW METAL	FRAME TO BE HOLLOW METAL WITH 1/32" LEAD LINING. GLAZING TO BE LEAD RATED GLASS CONTAINING LEAD EQUIVALENT OF 1/32" LEAD
W04		1	2'-6"x4'-0"	FIXED	HOLLOW METAL	HM FRAME. HEAD TO ALIGN WITH DOOR D135. PROVIDE HORIZONTAL PRIVACY BLINDS

Convenient MD
191 Marginal Way
Portland, Maine



DENNIS MIRES, P.A.
THE ARCHITECTS
697 Union Street, Manchester, NH
603-625-4548 FAX 603-625-1067

The seal contained in these drawings and the stamp they bear are the property of the seal owner and shall not be used for any other project without the written consent of the seal owner. The seal owner shall not be held responsible for any errors or omissions in these drawings. Any use, reproduction, or alteration of these drawings without the written permission of Dennis Mires, P.A. is strictly prohibited.

Door & Window Schedules

revisions:

date: 03/24/2017
proj. no.:

A601