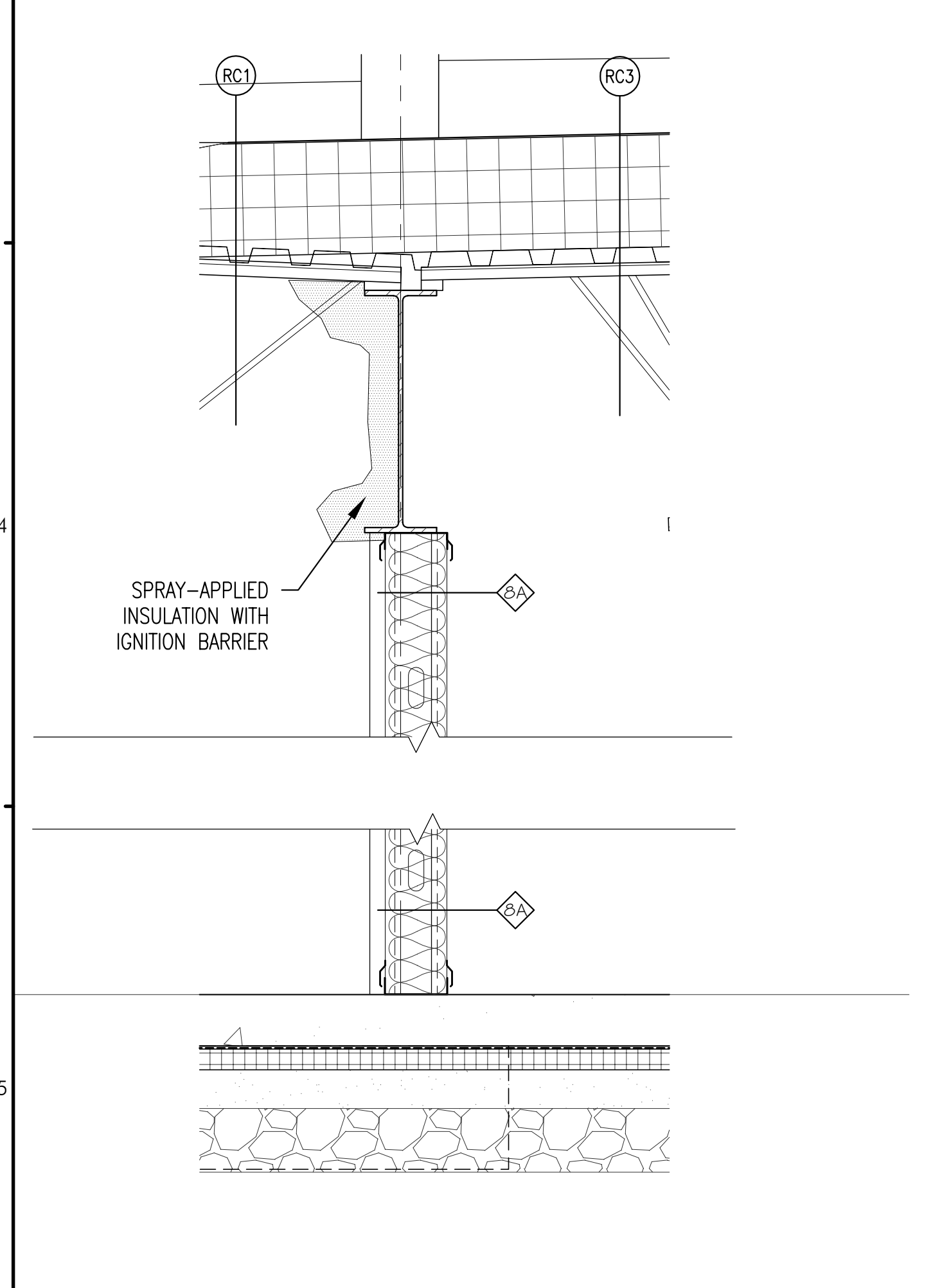
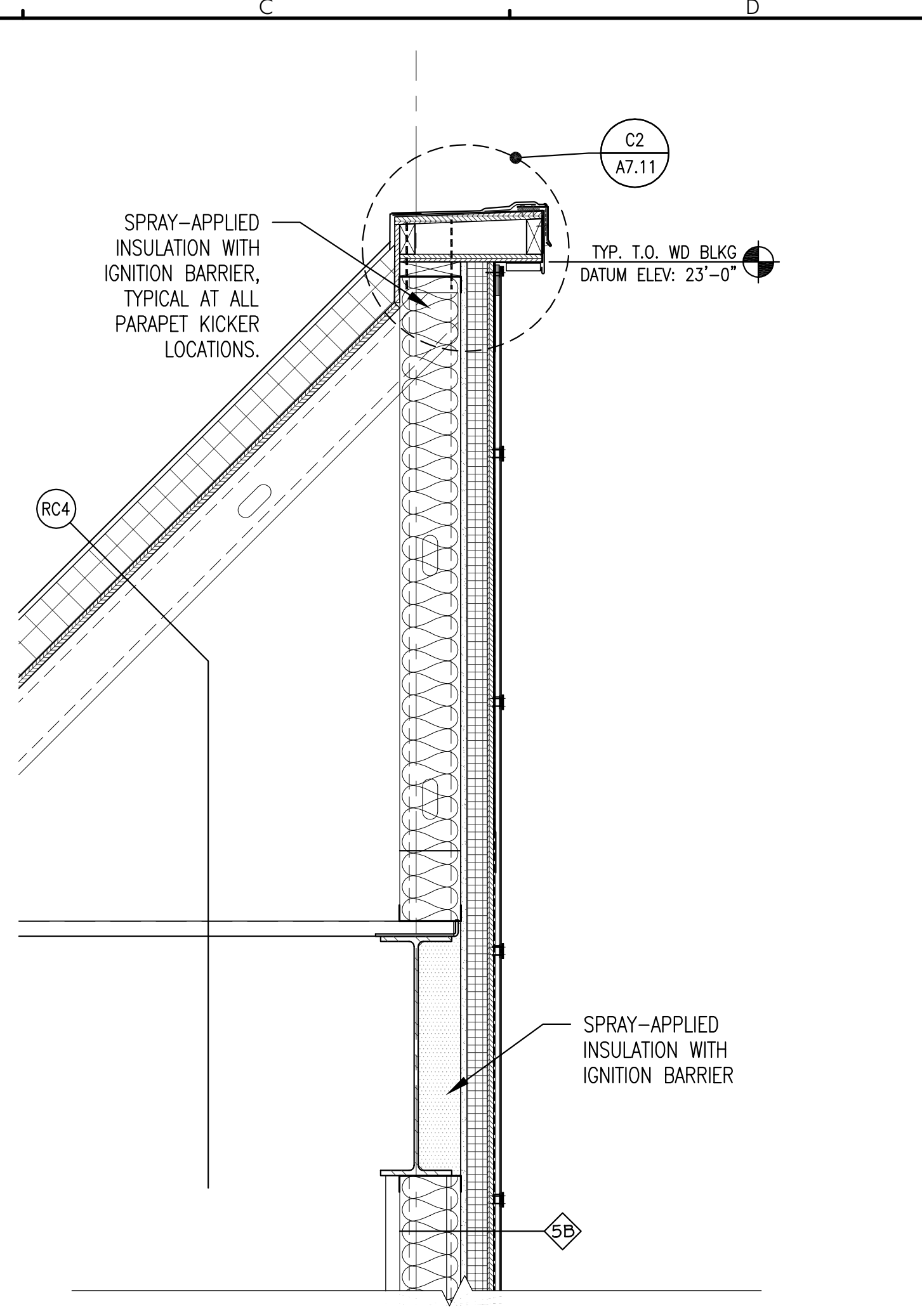


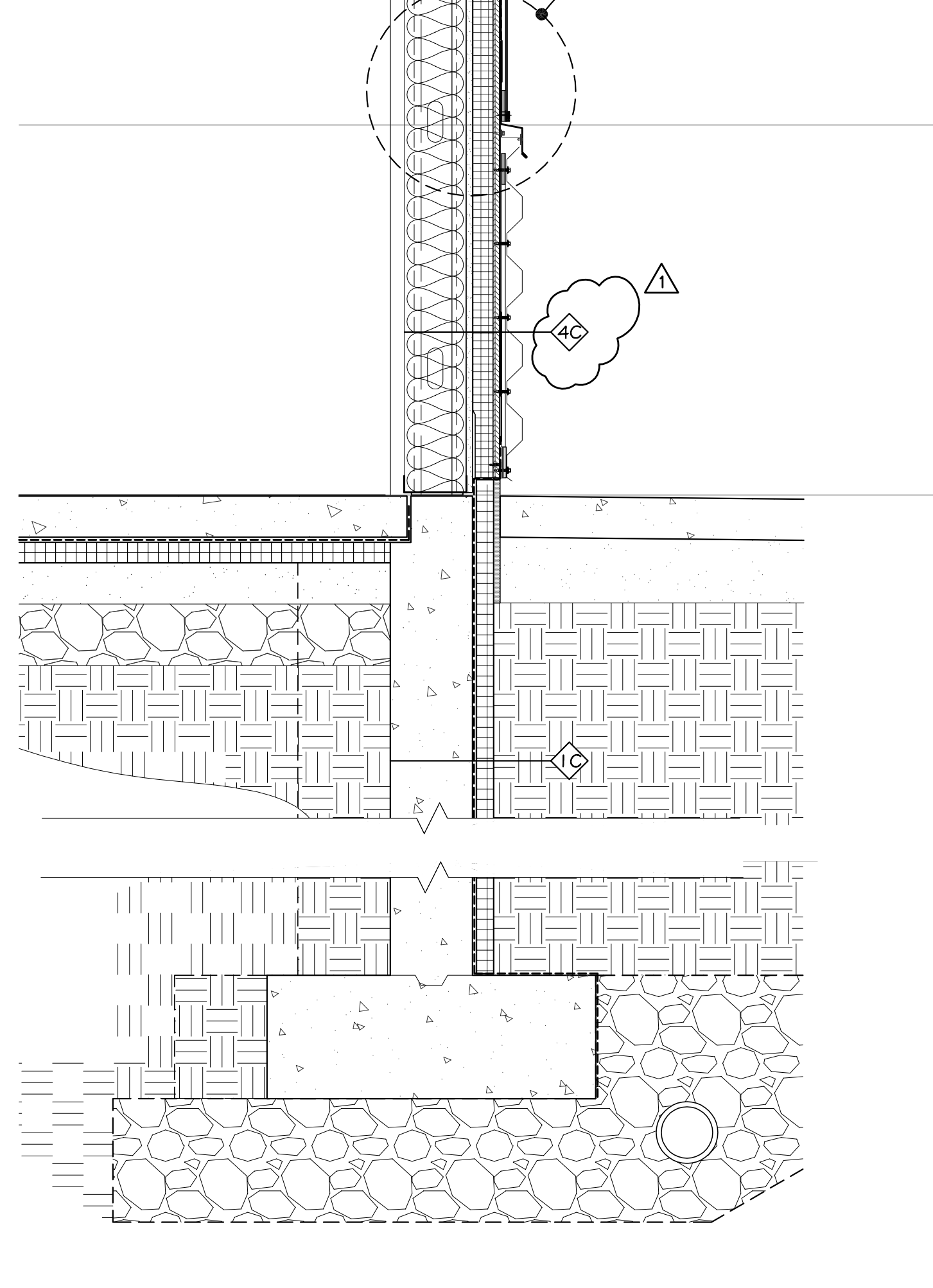
A3 PARAPET - SECTION DETAIL
 REFERENCED FROM: SCALE: 1" = 1'-0"



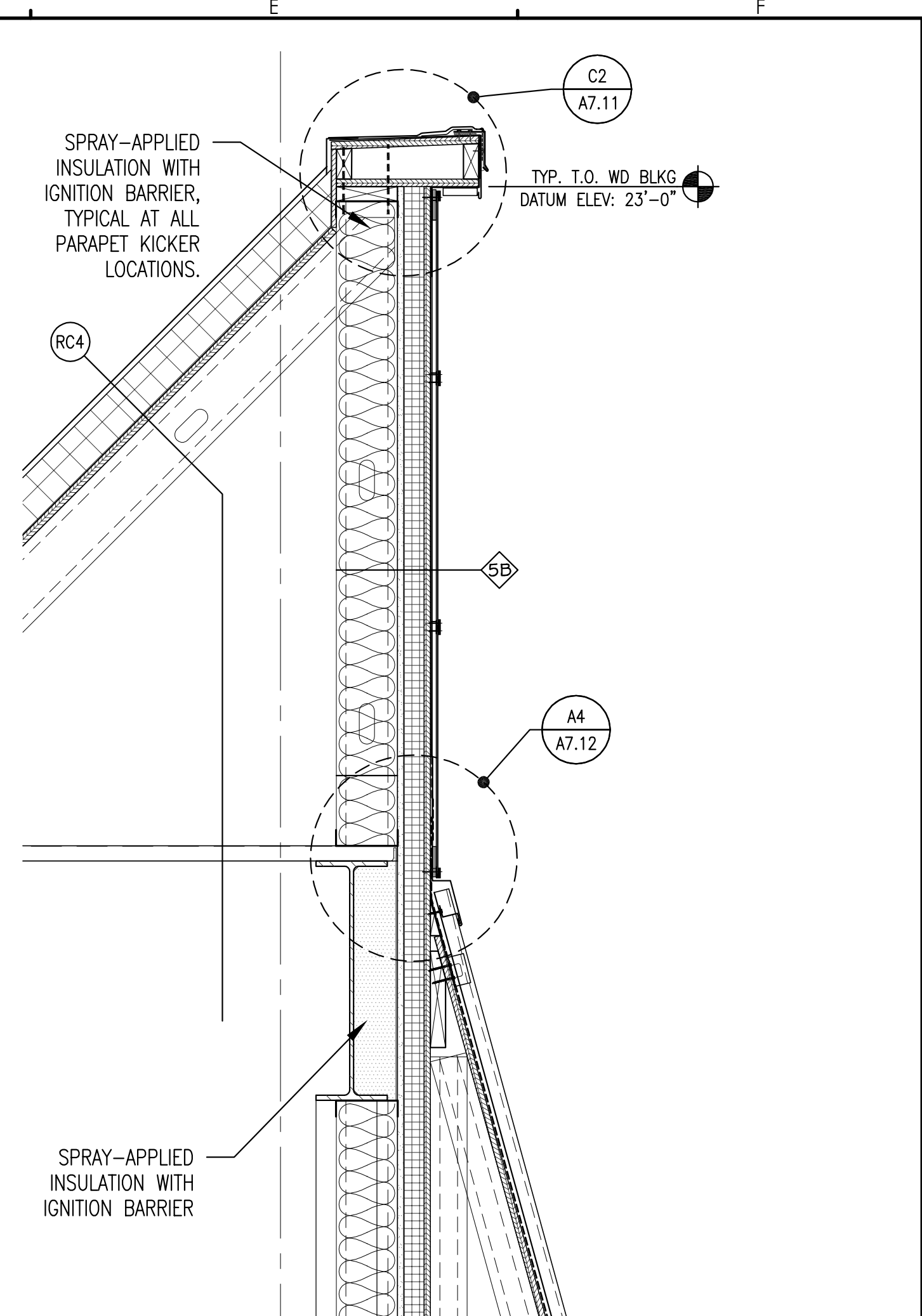
A5 WALL SECTION 4 AT RETAIL A/B
 REFERENCED FROM: PLANS SCALE: 1" = 1'-0"



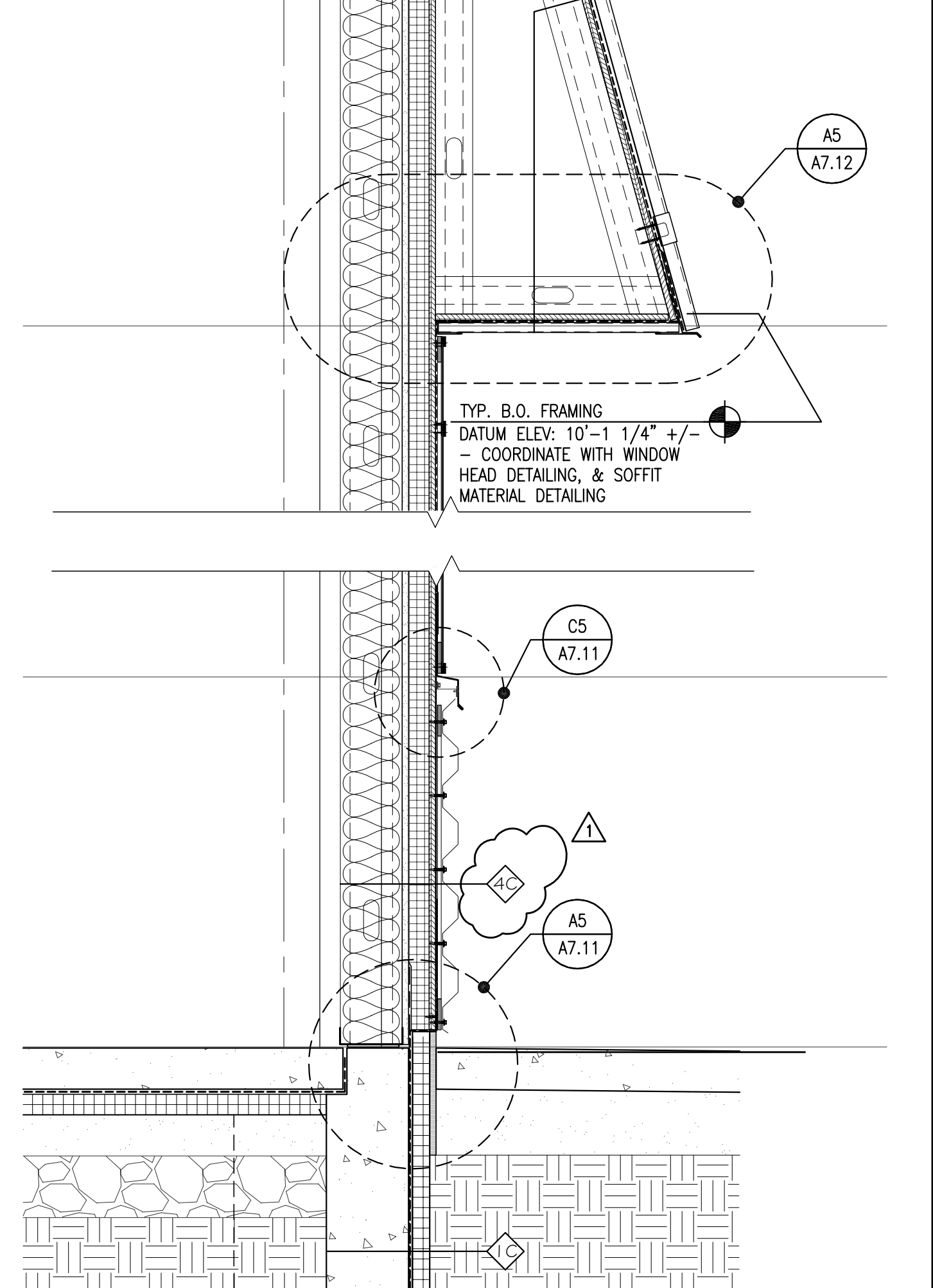
C5 WALL SECTION 5 AT RETAIL A/B
 REFERENCED FROM: PLANS SCALE: 1" = 1'-0"



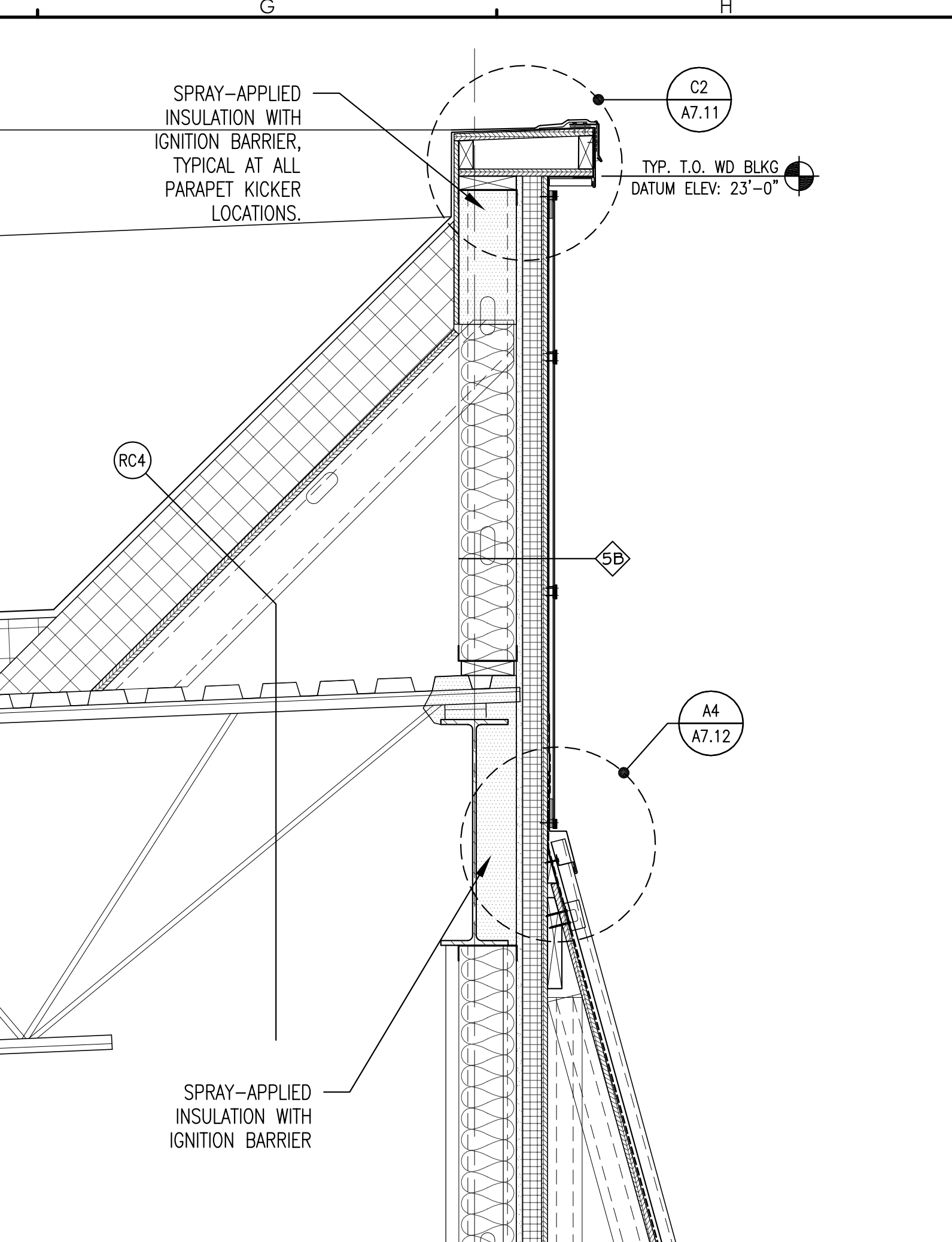
C5 WALL SECTION 5 AT RETAIL A/B
 REFERENCED FROM: PLANS SCALE: 1" = 1'-0"



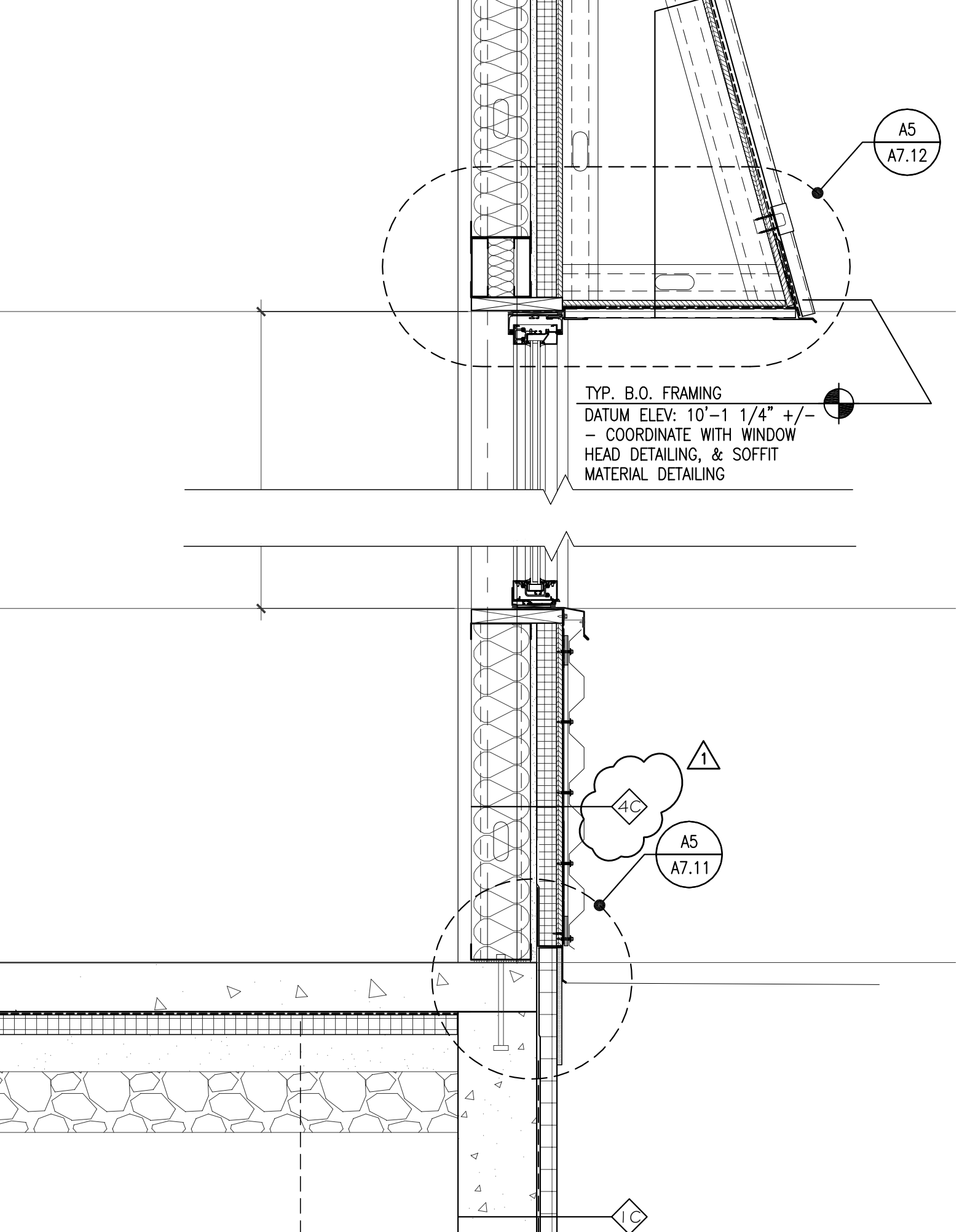
E5 WALL SECTION 6 AT RETAIL A/B
 REFERENCED FROM: PLANS SCALE: 1" = 1'-0"



E5 WALL SECTION 6 AT RETAIL A/B
 REFERENCED FROM: PLANS SCALE: 1" = 1'-0"




G5 WALL SECTION 7 AT RETAIL A/B
 REFERENCED FROM: PLANS SCALE: 1" = 1'-0"



G5 WALL SECTION 7 AT RETAIL A/B
 REFERENCED FROM: PLANS SCALE: 1" = 1'-0"

CWS ARCHITECTS
 ARCHITECTURE | INTERIOR DESIGN
 264 US Route One Box 6, Suite 100-2A
 Scarborough, ME 04074
 OFFICE: 207.774.4441 CWSARCH.COM

DESIGNER

 CWS ARCHITECTS
 ARCHITECTURE | INTERIOR DESIGN
 264 U.S. ROUTE ONE
 BOX 6, SUITE 100-2A
 SCARBOROUGH, MAINE 04074
 F: 207.774.4416
 WWW.CWSARCH.COM

OWNER
 EARL W. NOYES & SONS
 C/O PAUL URENECK
 4600 MAYFLOWER HILL
 WATERVILLE, ME 04901
 T: 207-859-4617

PROJECT
 191 MARGINAL WAY
 RETAIL CENTER
 191 MARGINAL WAY
 PORTLAND, MAINE 04101

DRAWING
 WALL SECTIONS
 CWS PROJECT NUMBER: 15.063

REVISIONS

05/17/2017		
RE: CLARIFICATION OF WALL TYPE 4C - ASI 02		

DRAWING NUMBER
A6.12
 SCALE: AS NOTED
 DATE: 03/15/2017

© 2015 Design Projects, LLC. 191 Marginal Way Retail Center - Drawing 151 - Wall Section 4 at Retail A/B