

CWS ARCHITECTS
ARCHITECTURE | INTERIOR DESIGN
264 U.S. ROUTE ONE
BOX 6, SUITE 100-2A
SCARBOROUGH, MAINE 04074
P: 207.774.4441
WWW.CWSARCH.COM

OWNER
EARL W. NOYES & SONS
C/O PAUL URENECK

4600 MAYFLOWER HILL
WATERVILLE, ME 04901
T: 207-859-4617

PROJECT
191 MARGINAL WAY
RETAIL CENTER

191 MARGINAL WAY
PORTLAND, MAINE 04101

DRAWING
PERMANENT LADDER
DETAILS

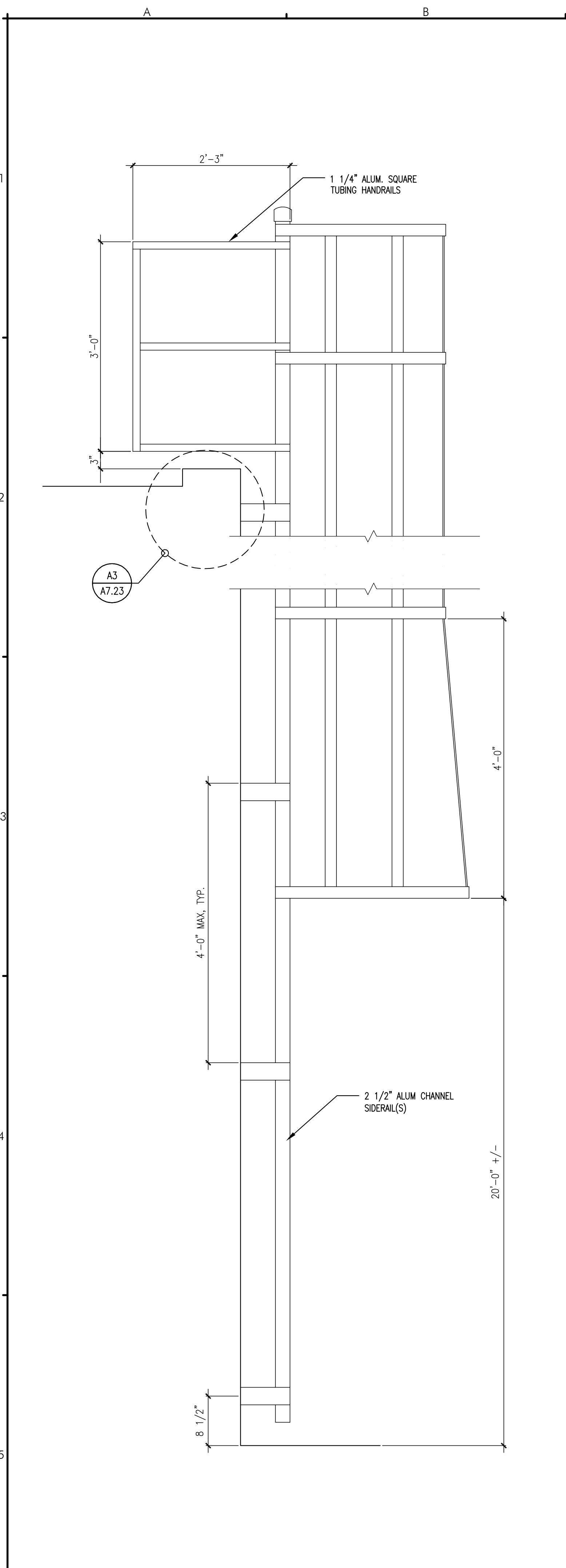
CWS PROJECT NUMBER: 15.063

REVISIONS

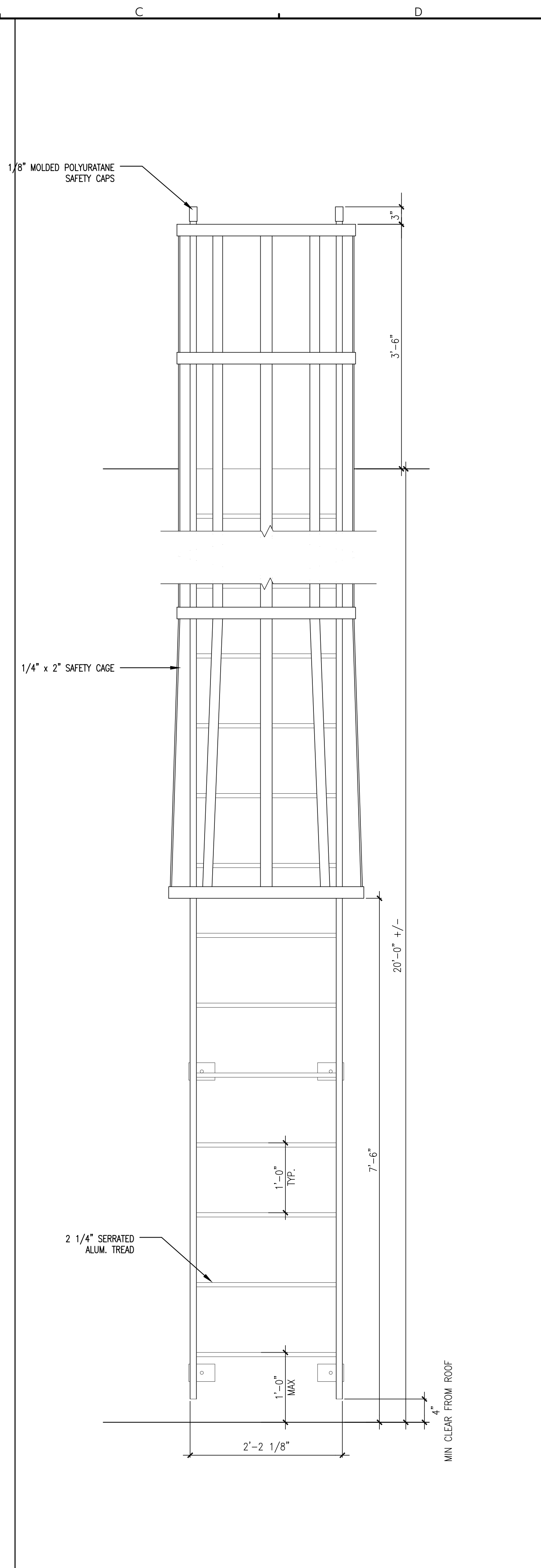
DRAWING NUMBER

A7.22

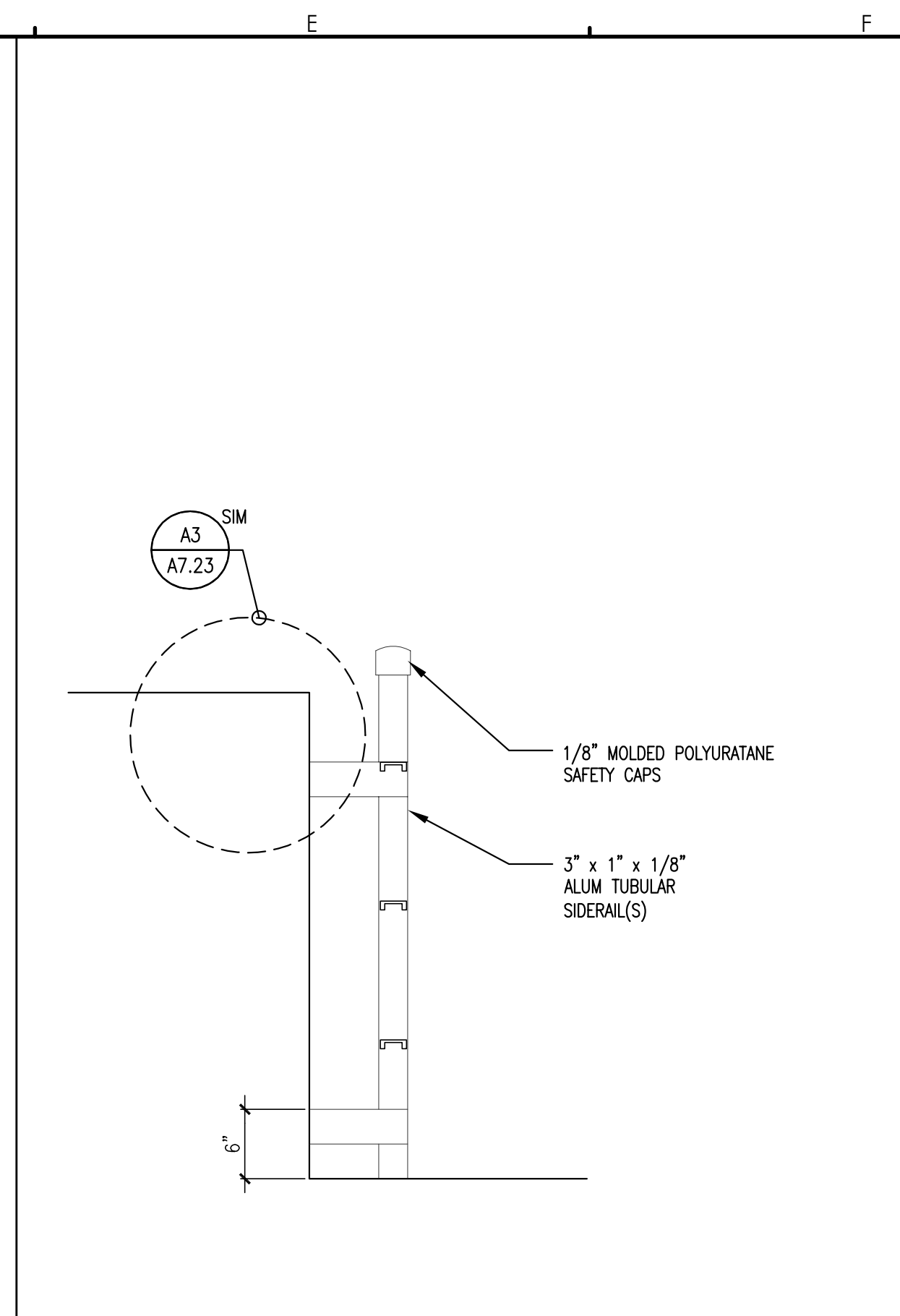
SCALE: AS NOTED
DATE: 02/10/2017



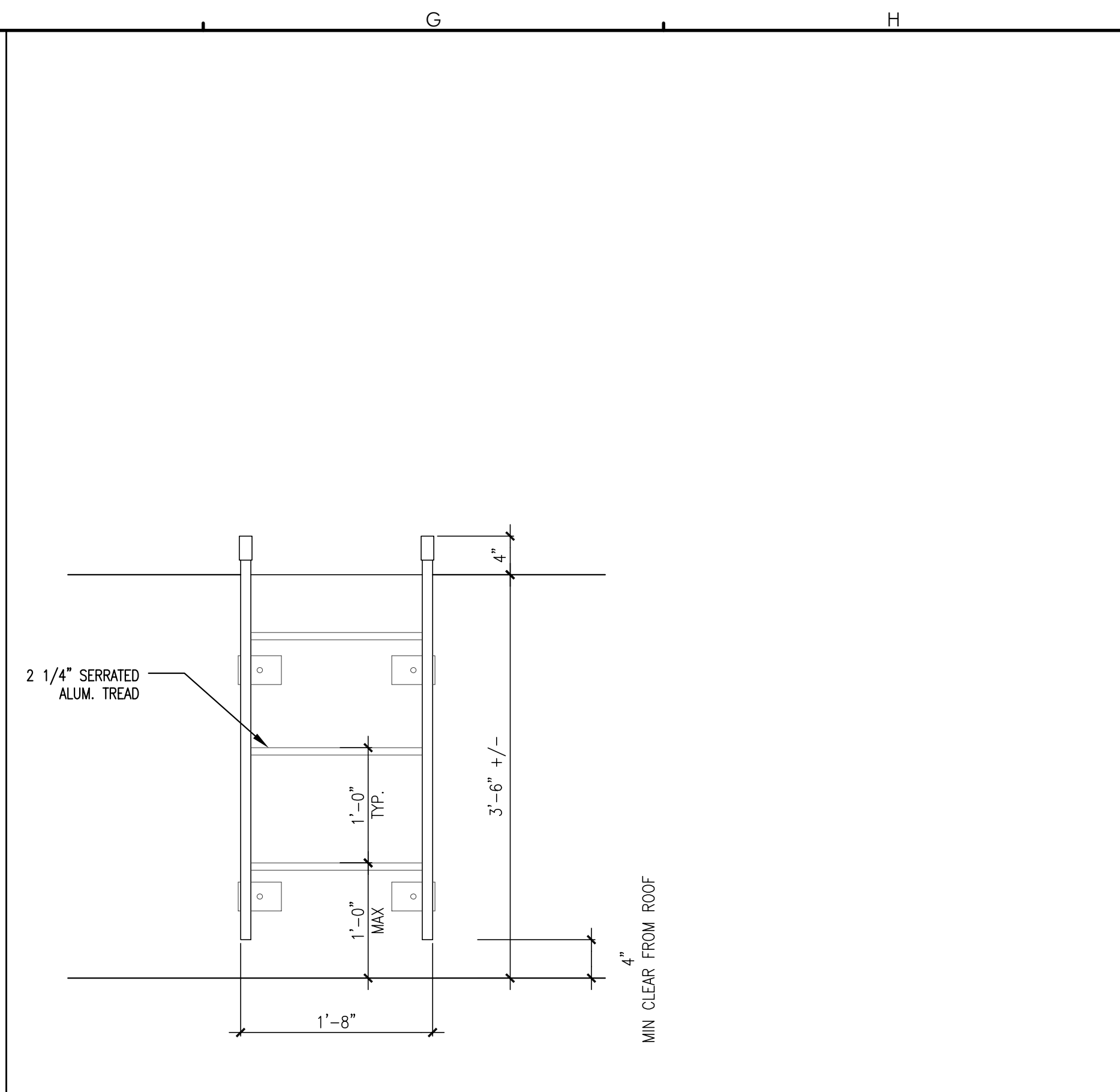
A5 FIXED, WELDED, CAGED, WALK-THROUGH ACCESS LADDER SIDE ELEVATION
REFERENCED FROM: A1.R0 SCALE: 1" = 1'-0"



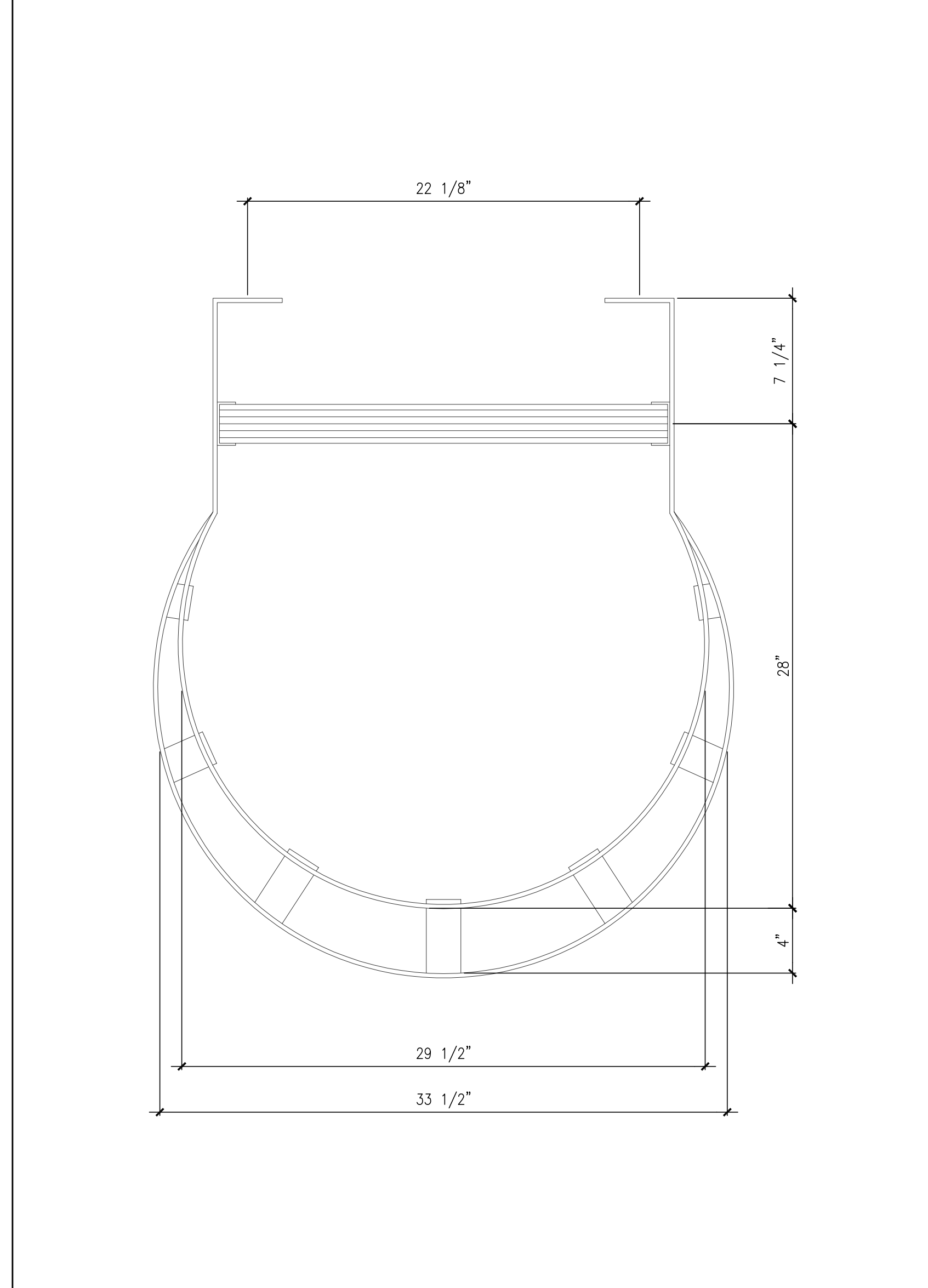
C5 FIXED, WELDED, CAGED, WALK-THROUGH ACCESS LADDER ELEVATION
REFERENCED FROM: A1.R0 SCALE: 1" = 1'-0"



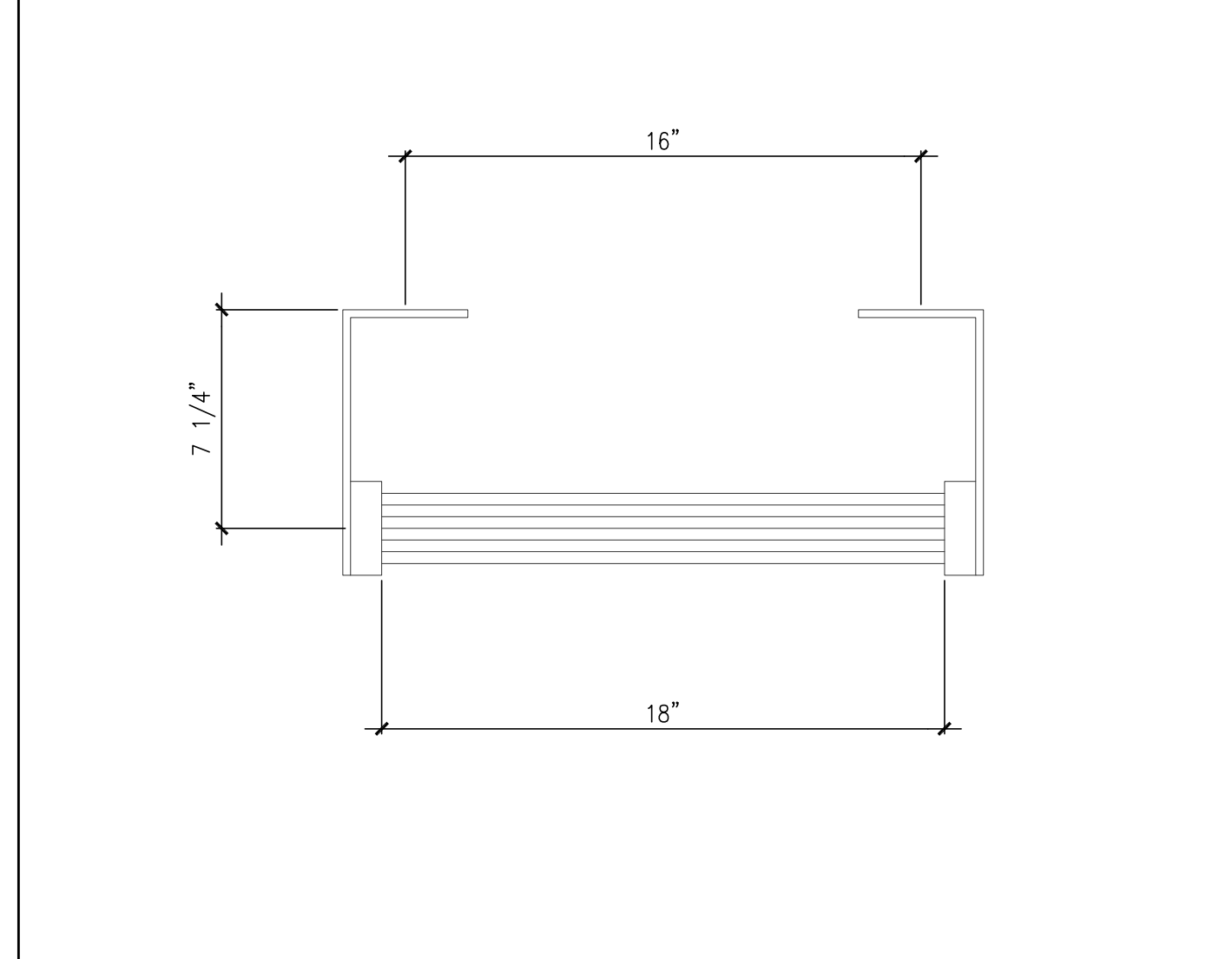
D2 FIXED, WELDED ACCESS LADDER SIDE ELEVATION
REFERENCED FROM: A1.R0 SCALE: 1" = 1'-0"



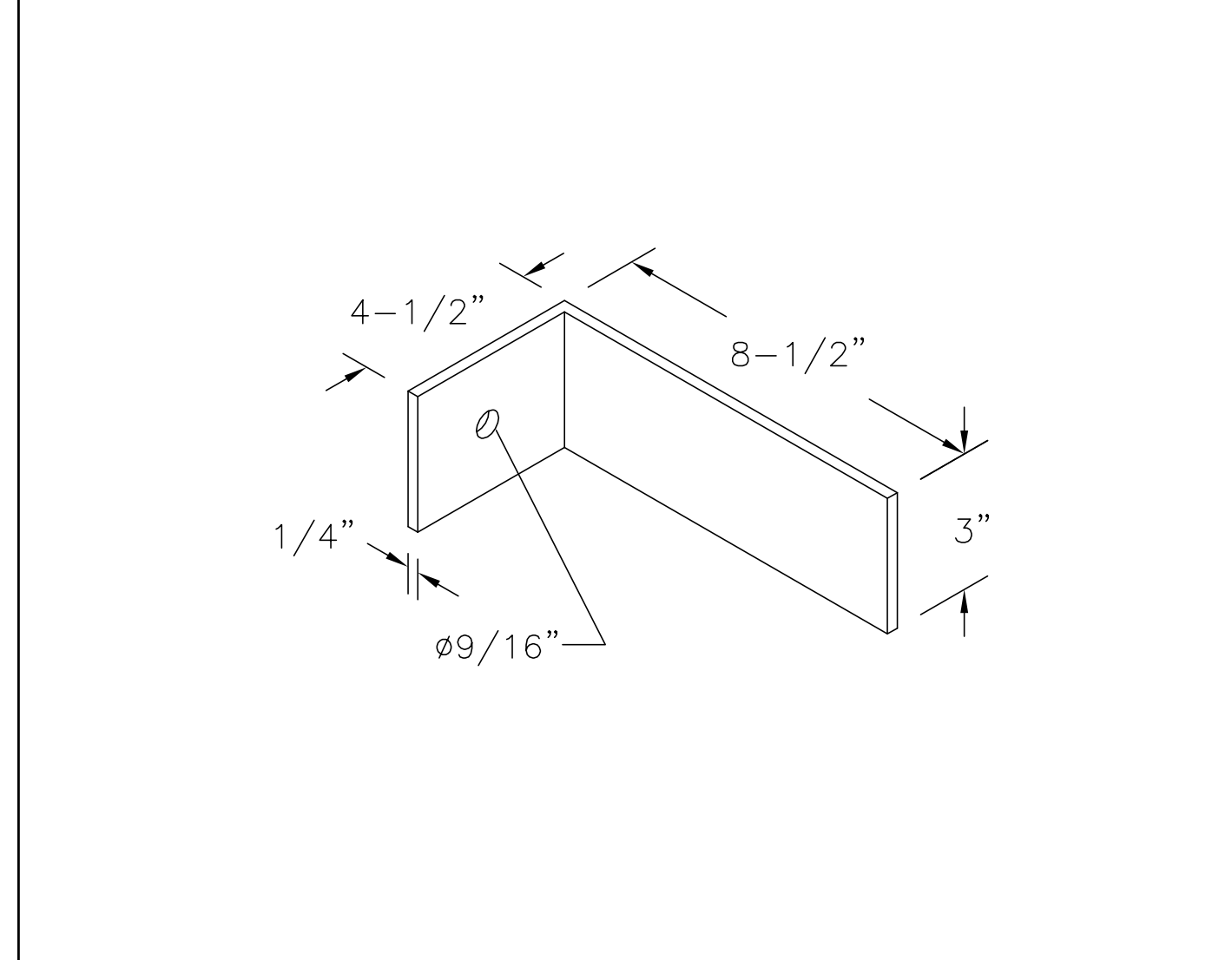
F2 FIXED, WELDED ACCESS LADDER ELEVATION
REFERENCED FROM: A1.R0 SCALE: 1" = 1'-0"



D5 FIXED, WELDED, CAGED, WALK-THROUGH ACCESS LADDER PLAN DETAIL
REFERENCED FROM: A1.R0 SCALE: 1" = 1'-0"



G4 FIXED, WELDED ACCESS PLAN DETAIL
REFERENCED FROM: A1.R0 SCALE: 1" = 1'-0"



G5 LADDER BRACKET DETAIL
REFERENCED FROM: A1.R0 SCALE: N/A