

CWS ARCHITECTS
ARCHITECTURE | INTERIOR DESIGN
264 U.S. ROUTE ONE
BOX 6, SUITE 100-2A
SCARBOROUGH, MAINE 04074
F: 207.774.4441
WWW.CWSARCH.COM

DESIGNER

OWNER

PROJECT

DRAWING

REVISIONS

EARL W. NOYES & SONS
C/O PAUL URENECK

191 MARGINAL WAY
RETAIL CENTER

ROOF DETAILS

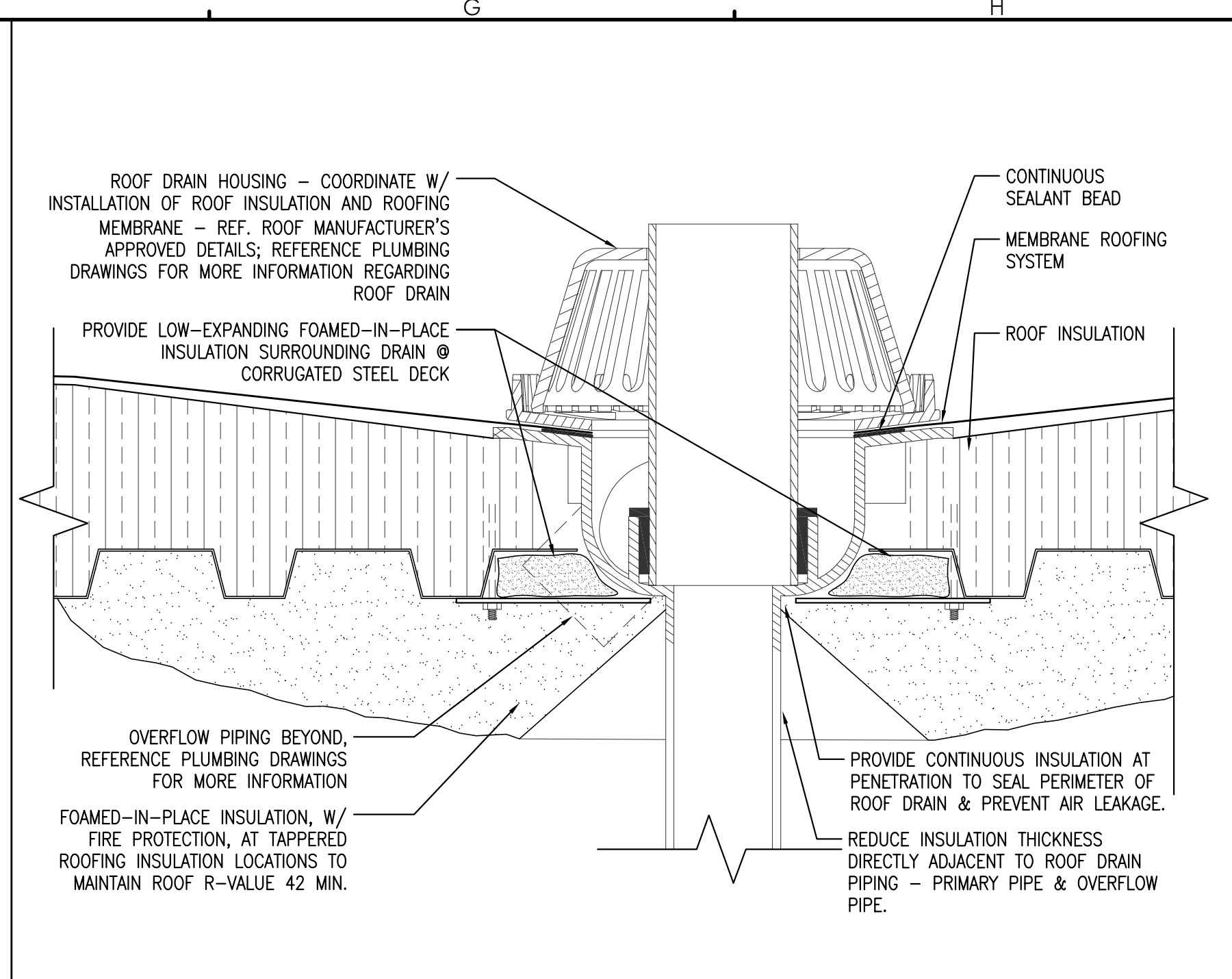
DRAWING NUMBER
A7.21

SCALE: AS NOTED
DATE: 02/10/2017

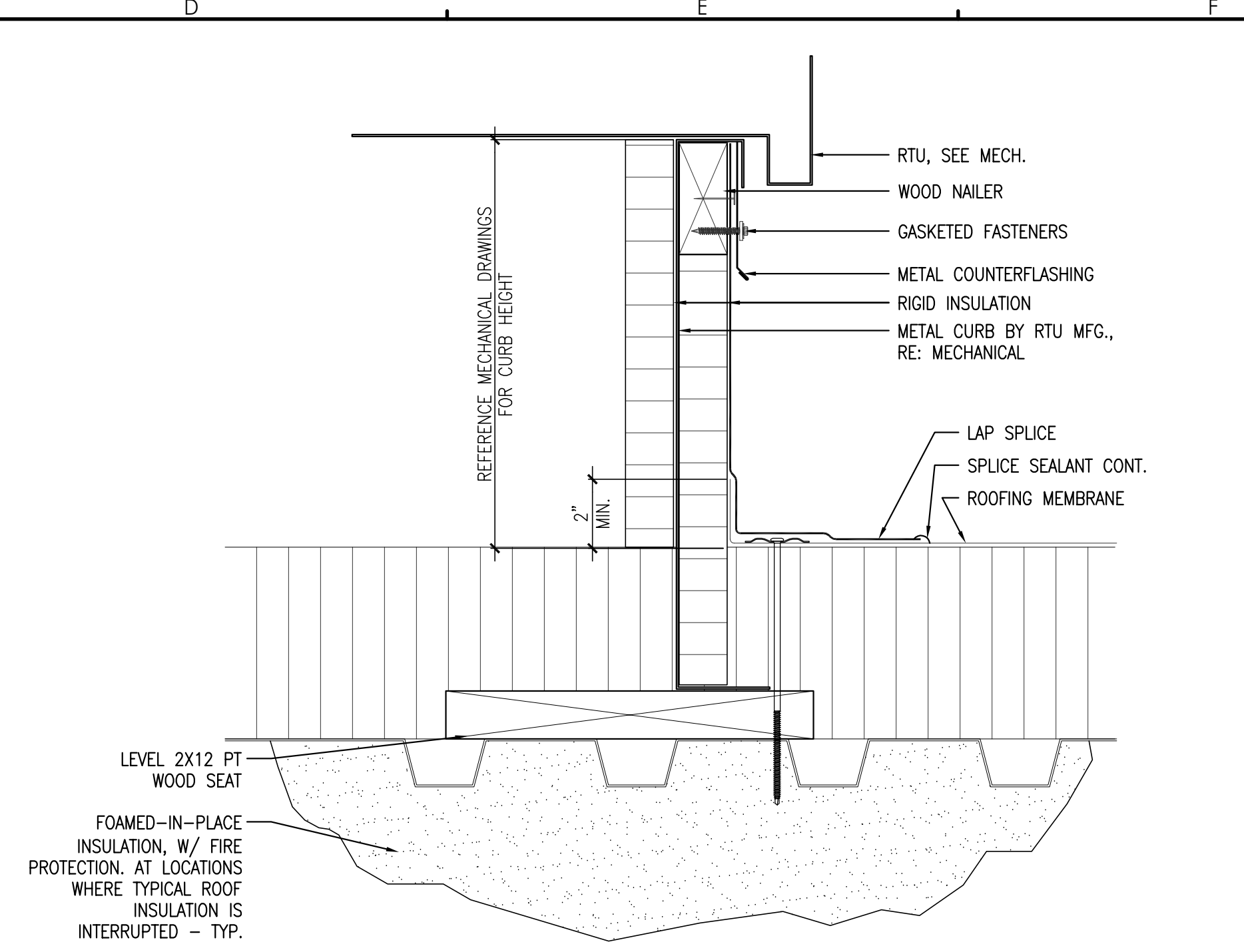
4600 MAYFLOWER HILL
WATERVILLE, ME 04901
T: 207-859-4617

191 MARGINAL WAY
PORTLAND, MAINE 04101

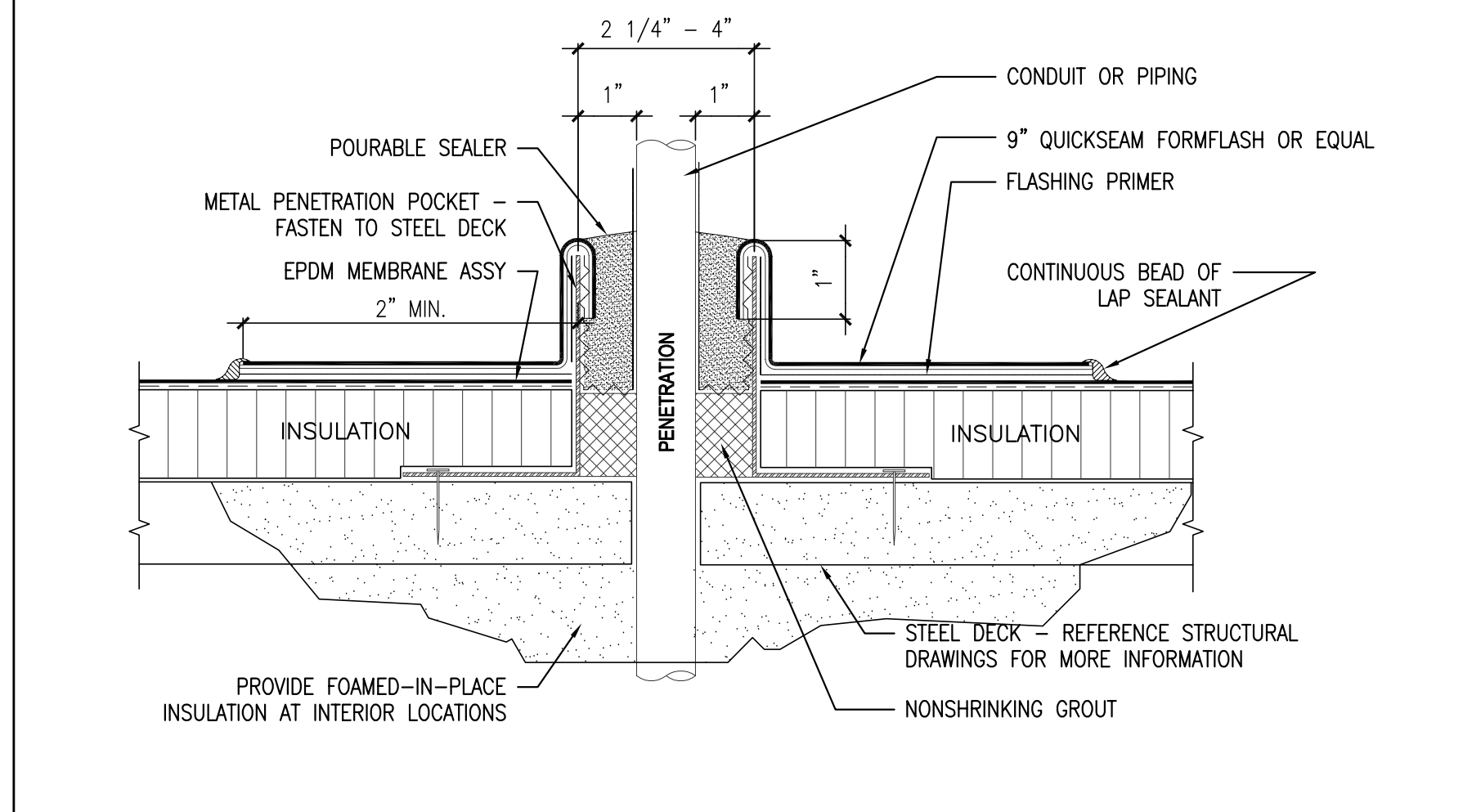
CWS PROJECT NUMBER: 15.063



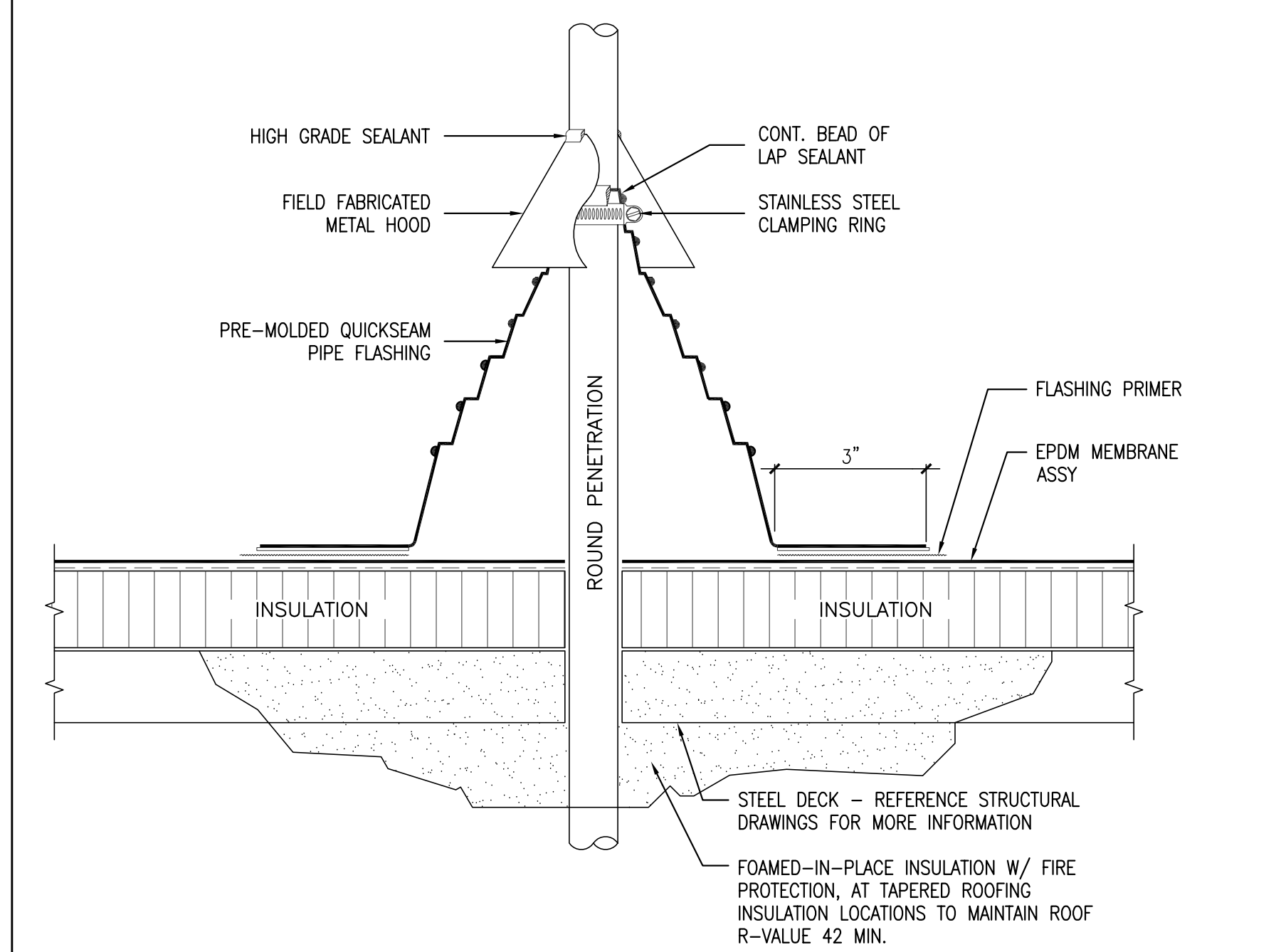
F2 ROOF DRAIN SECTION DETAIL
REFERENCED FROM: A1.R0 SCALE: 3" = 1'-0"



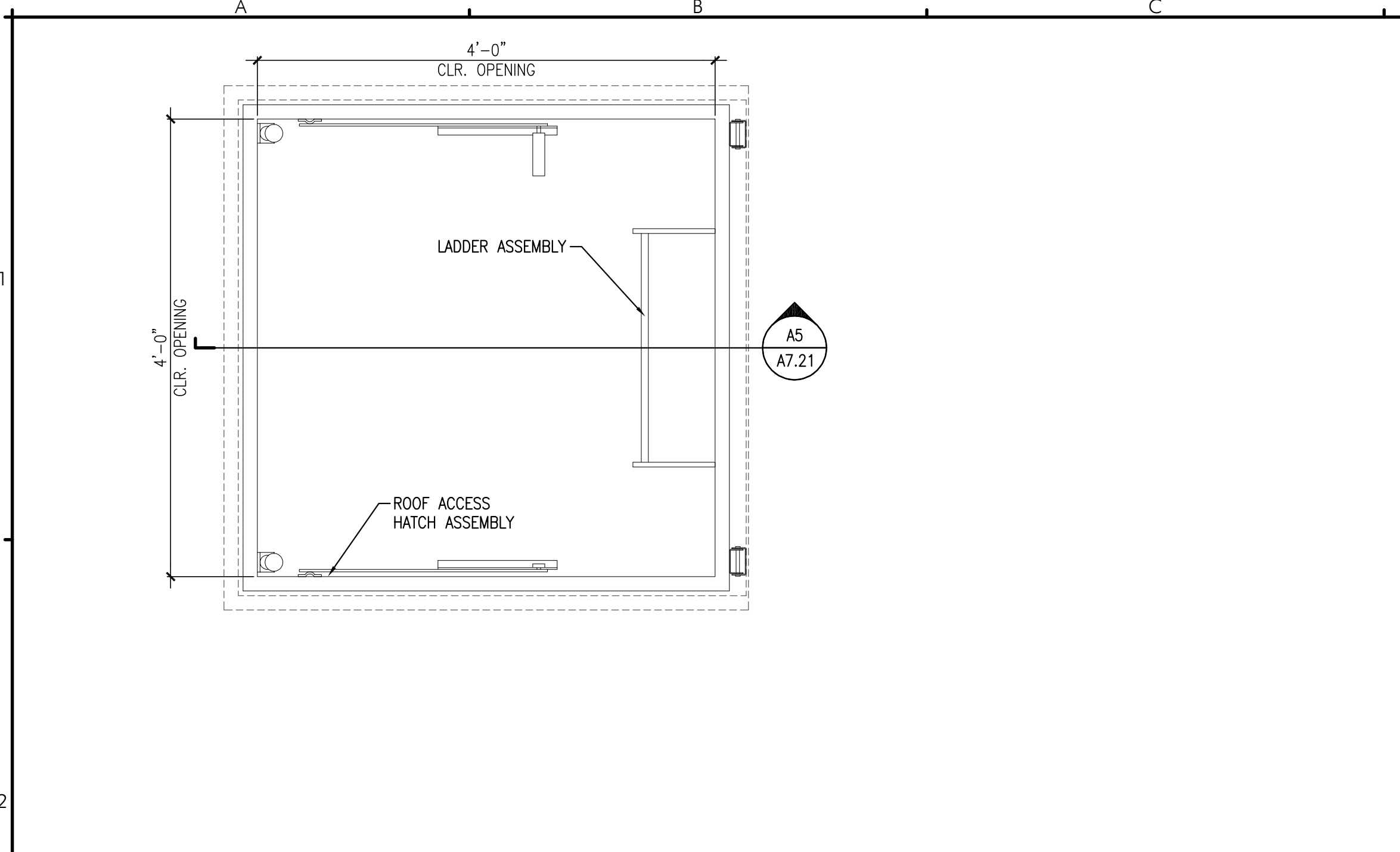
D2 RTU CURB DETAIL
REFERENCED FROM: A1.R0 SCALE: 3" = 1'-0"



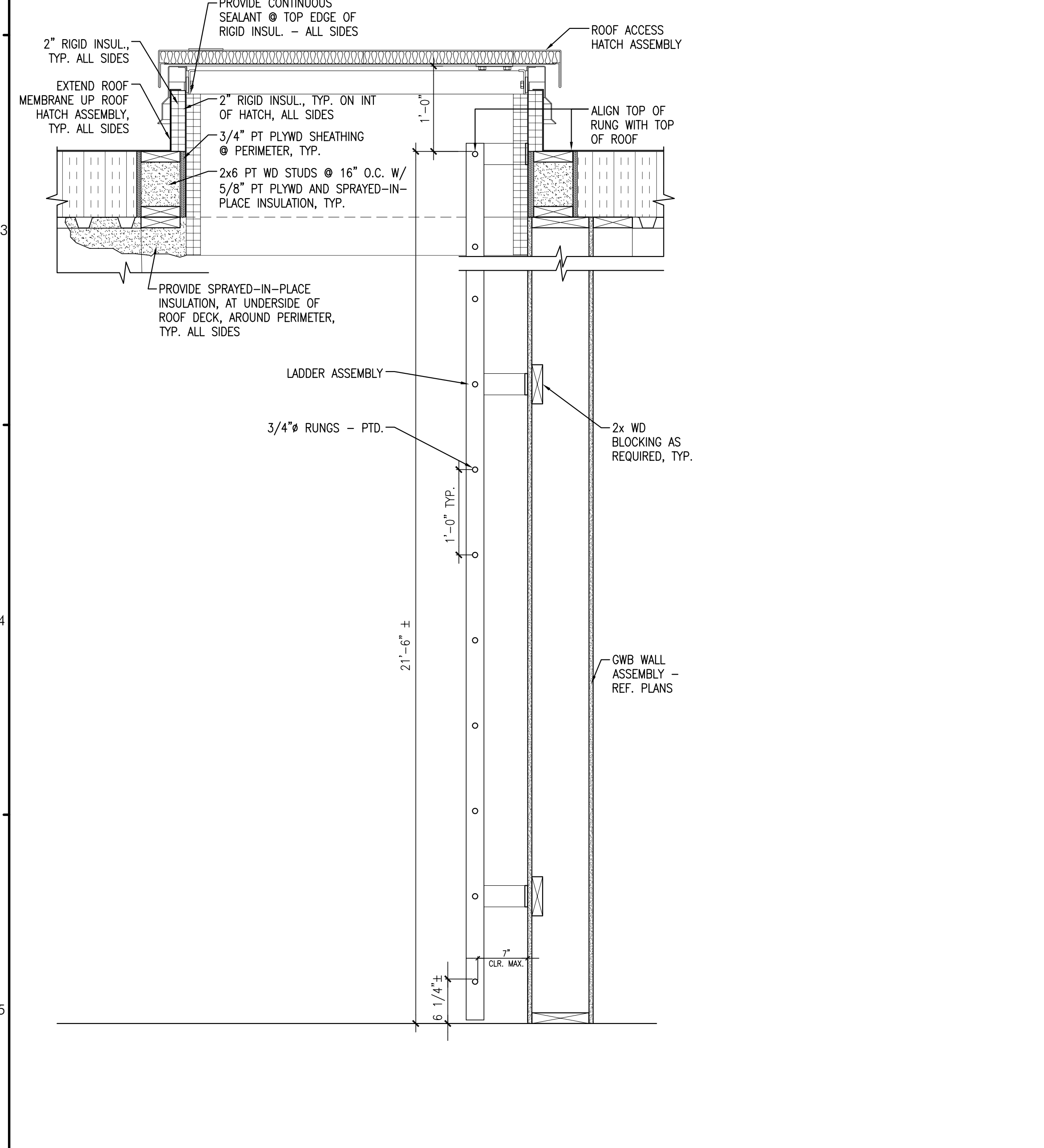
F4 SMALL PIPE & CONDUIT PENETRATION AT ROOF - SECTION DETAIL
REFERENCED FROM: A1.R0 SCALE: 6" = 1'-0"



F5 ROUND PIPE PENETRATION AT ROOF - SECTION DETAIL
REFERENCED FROM: A1.R0 SCALE: 6" = 1'-0"



A2 ROOF ACCESS HATCH PLAN DETAIL
REFERENCED FROM: A1.R0 SCALE: 1" = 1'-0"



A5 INTERIOR PERMANENT ROOF ACCESS LADDER & HATCH - SECTION DETAIL
REFERENCED FROM: A1.R0 SCALE: 1" = 1'-0"

© 2017 Design Projects, LLC. All Rights Reserved. CWS Architects, Inc. is a registered professional architectural firm in the State of Maine. No part of this drawing may be reproduced without the written permission of CWS Architects, Inc.