

CWS ARCHITECTS
ARCHITECTURE | INTERIOR DESIGN
264 U.S. ROUTE ONE
BOX 6, SUITE 100-2A
SCARBOROUGH, MAINE 04074
207.774.4441
WWW.CWSARCH.COM

OWNER
EARL W. NOYES & SONS
C/O PAUL URENECK

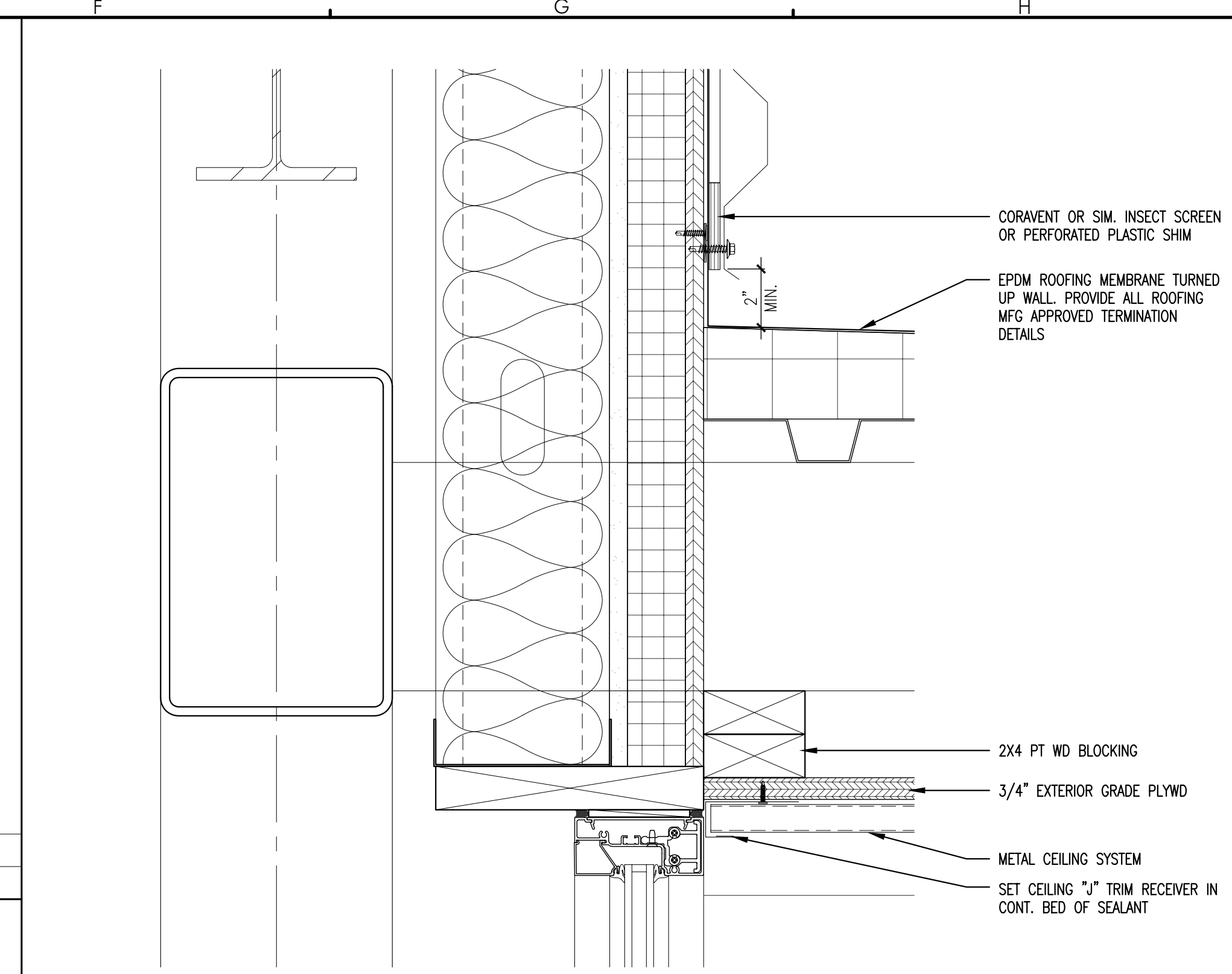
PROJECT
191 MARGINAL WAY
RETAIL CENTER

DRAWING
EXTERIOR DETAILS

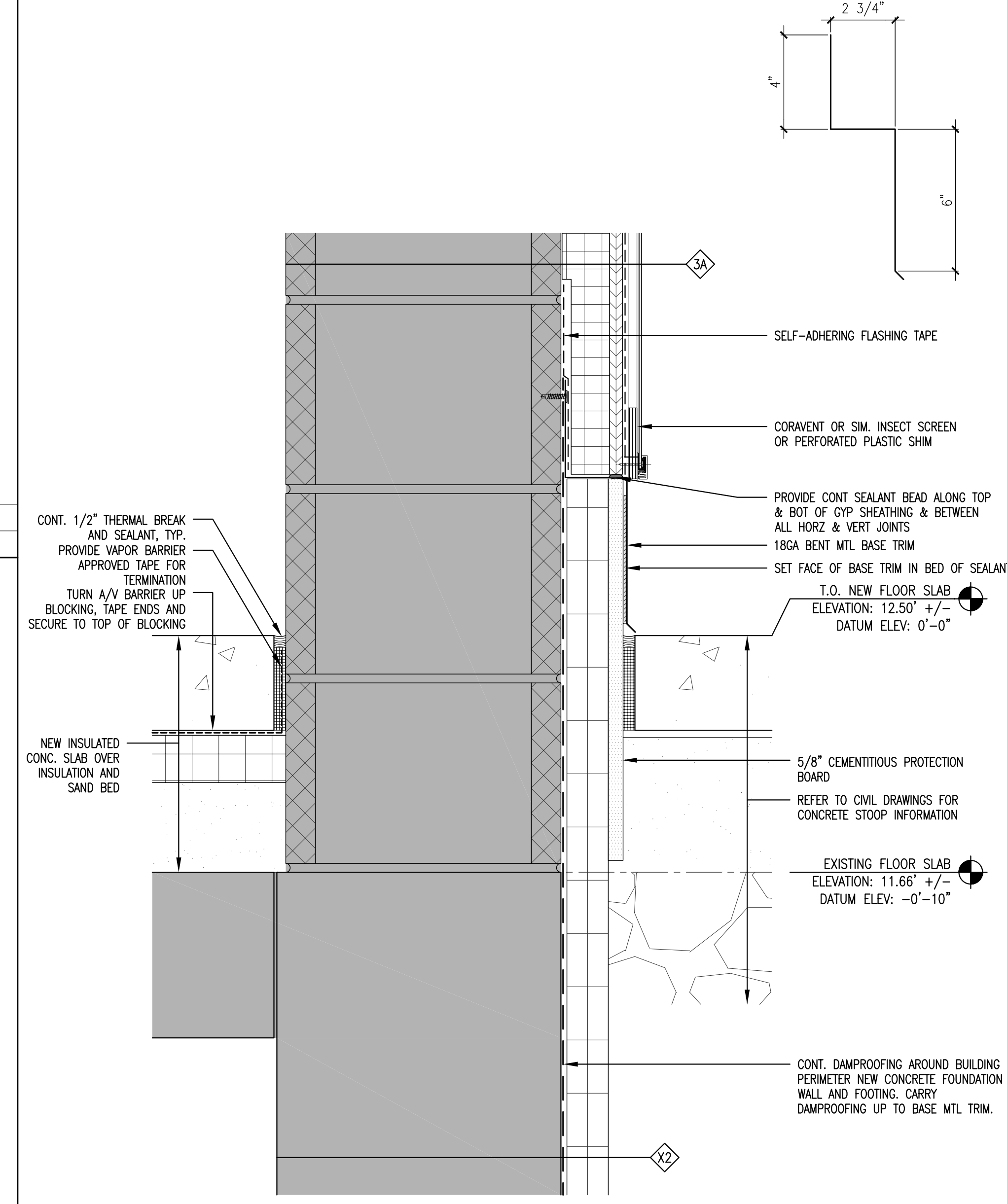
REVISIONS

DRAWING NUMBER
A7.11

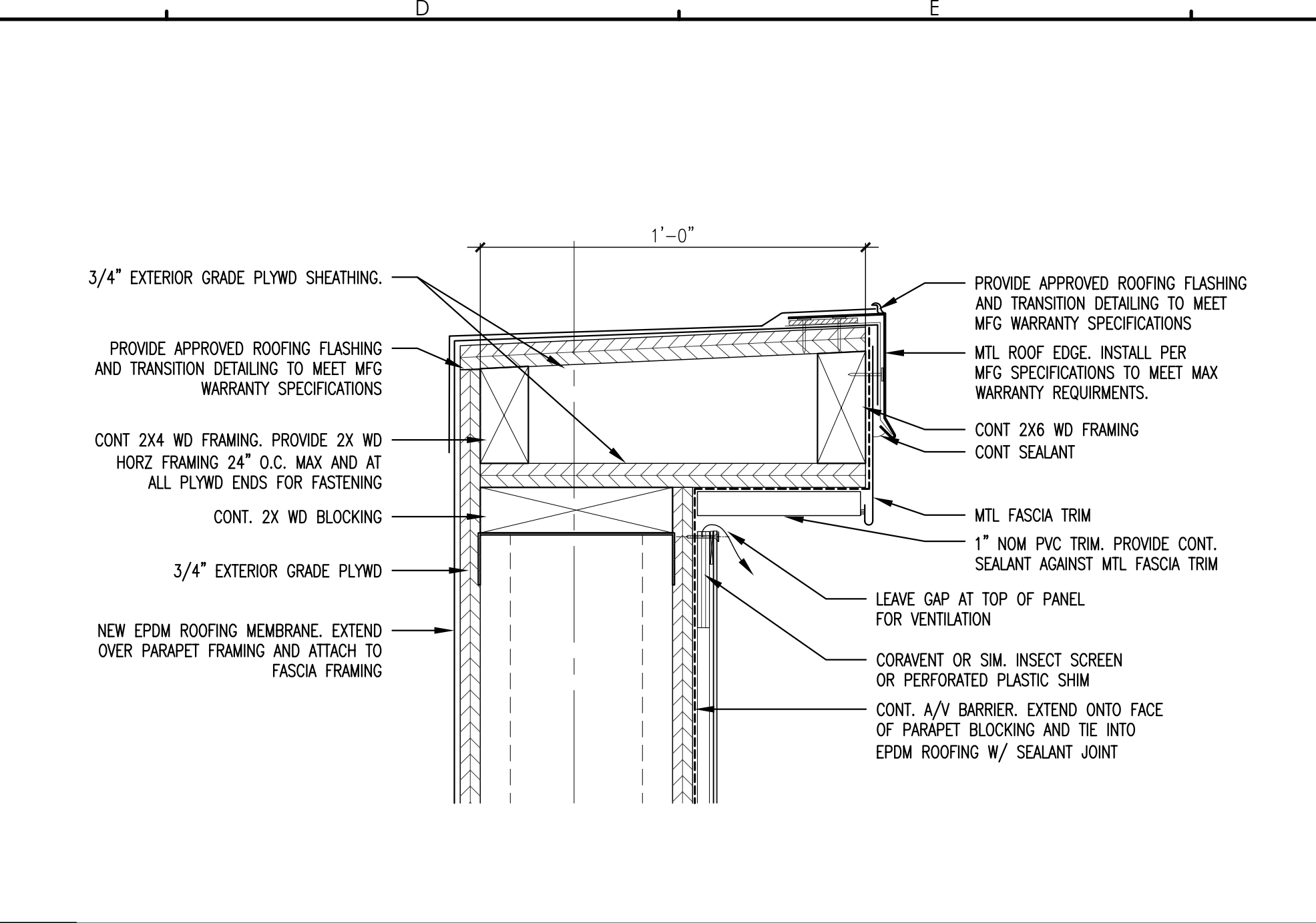
SCALE: AS NOTED
DATE: 02/10/2017



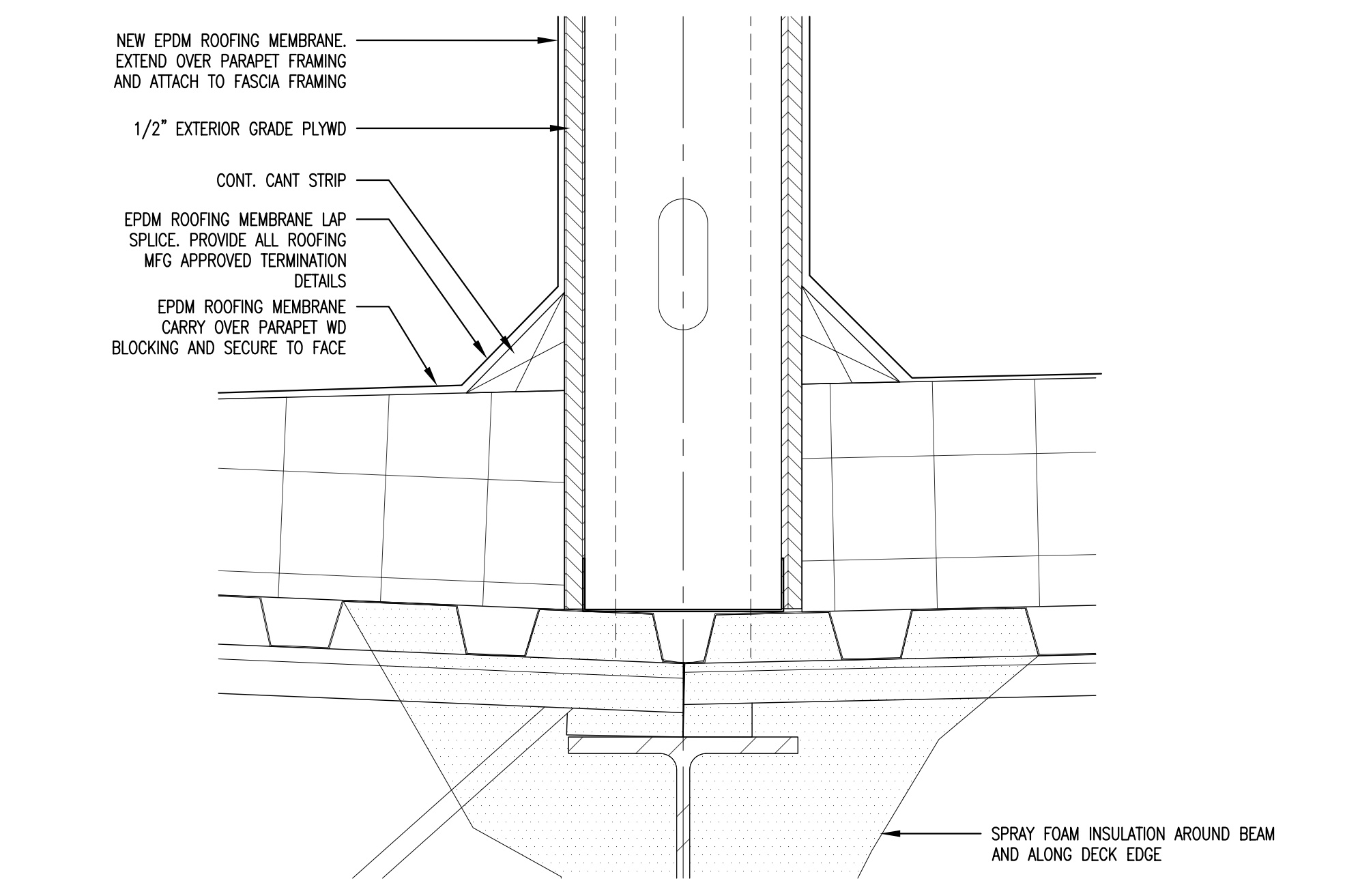
F2 BASE OF WALL AT ROOF - SECTION DETAIL
REFERENCED FROM: A5/A6.11 SCALE: 3" = 1'-0"



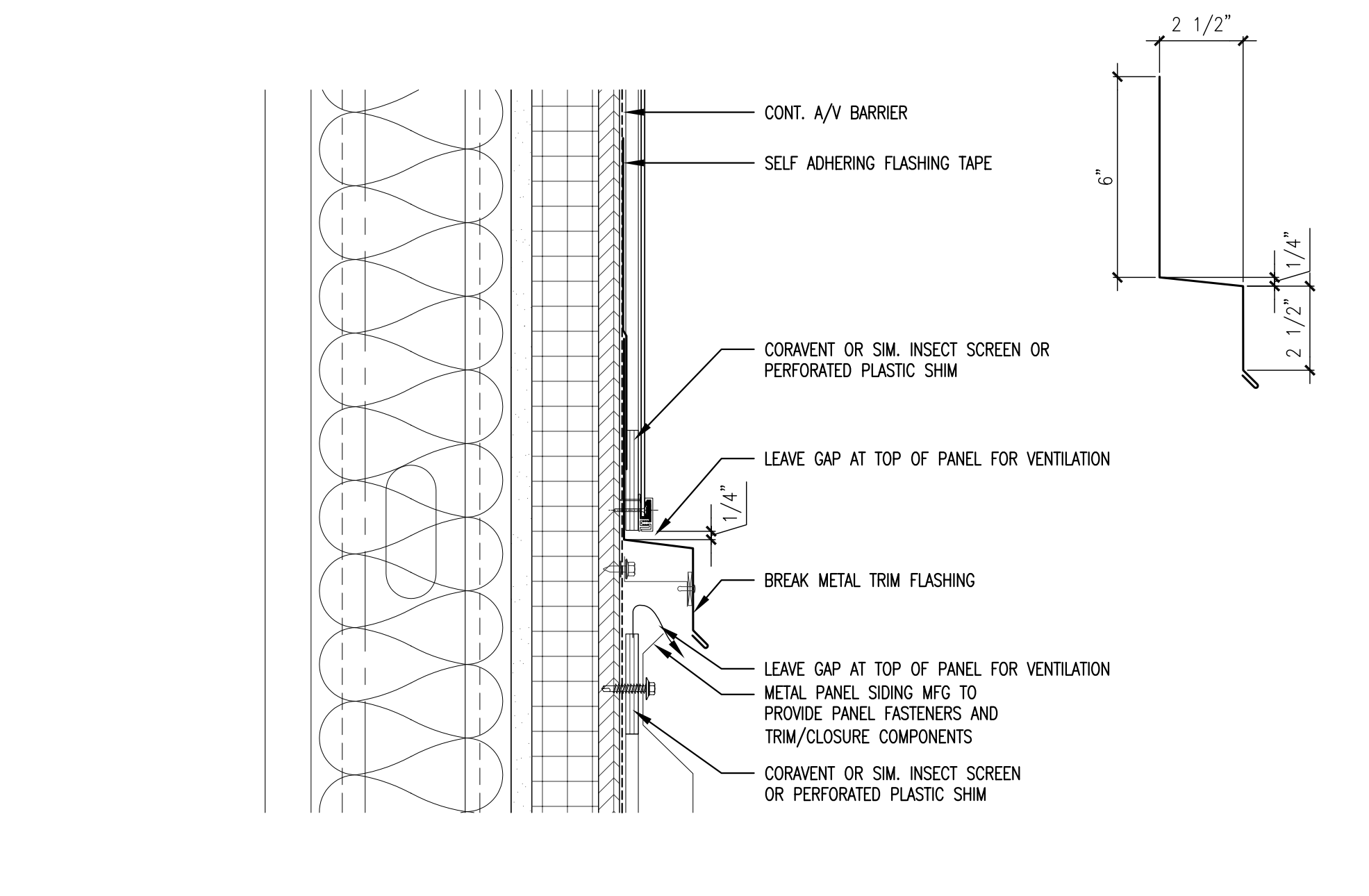
F5 BASE OF WALL DETAIL - SECTION VIEW
REFERENCED FROM: E5/A6.02 SCALE: 3" = 1'-0"



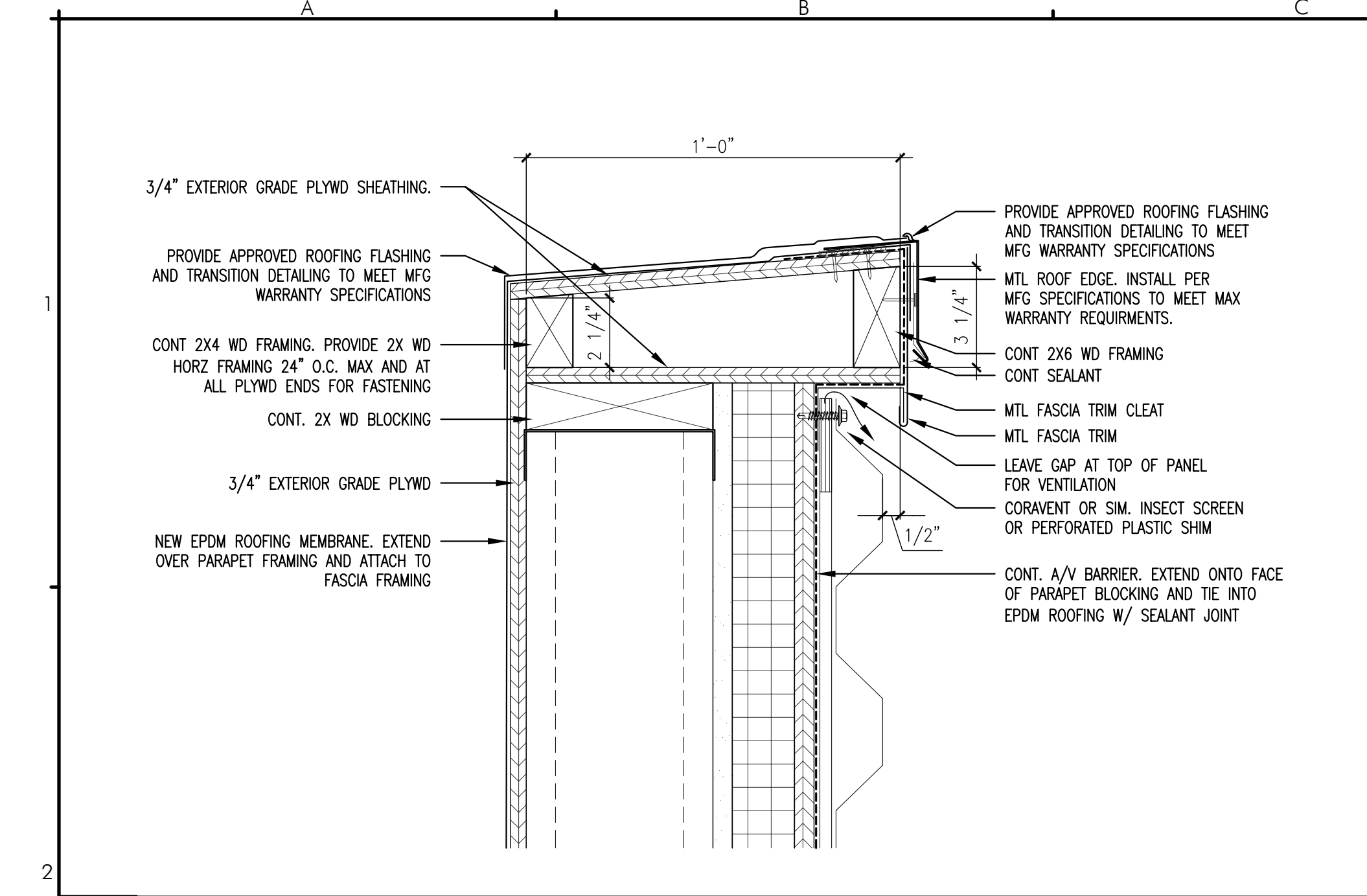
C2 PARAPET - SECTION DETAIL
REFERENCED FROM: A5/A6.12 SCALE: 3" = 1'-0"



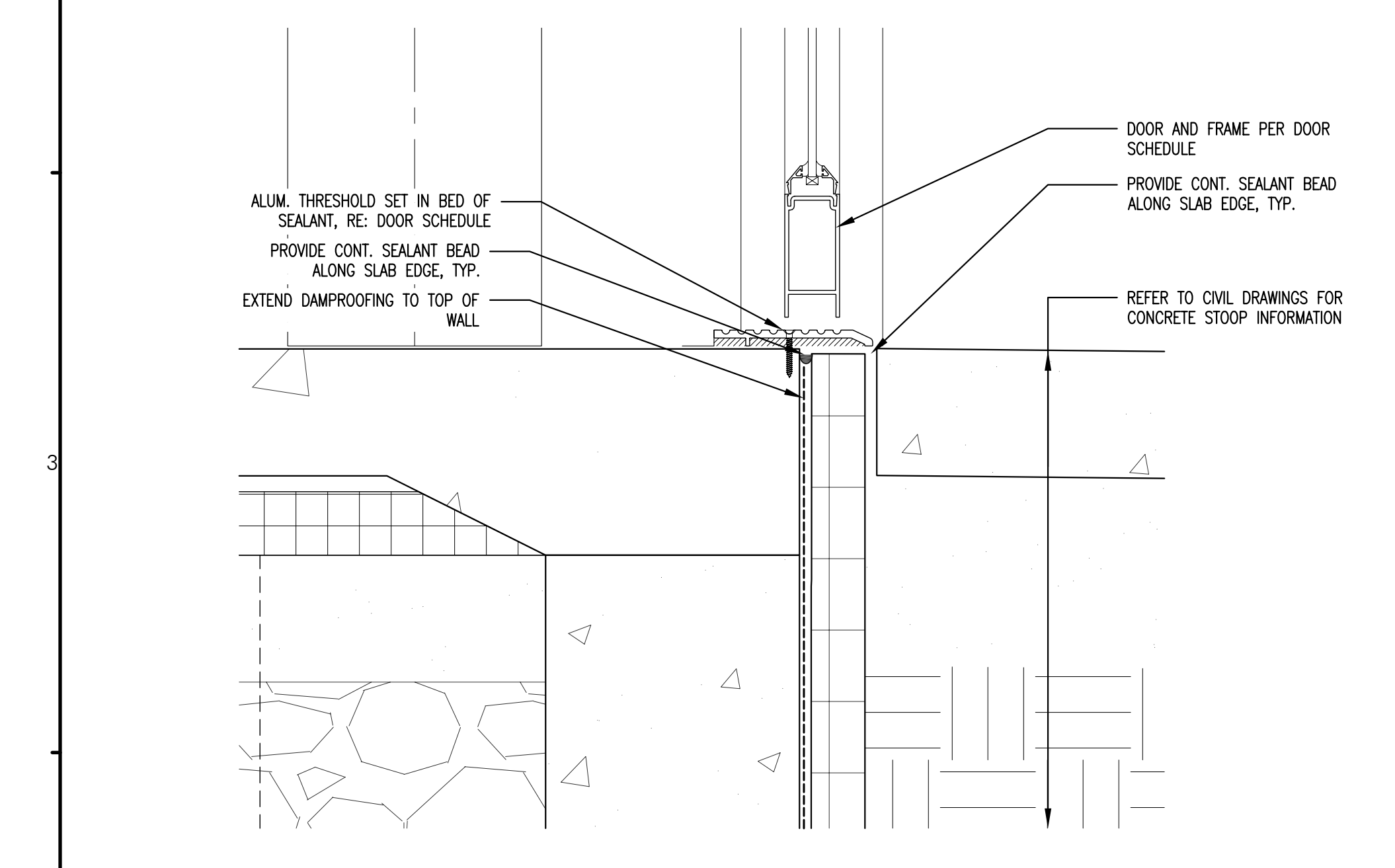
C4 PARAPET SECTION DETAIL
REFERENCED FROM: A5/A6.12 SCALE: 3" = 1'-0"



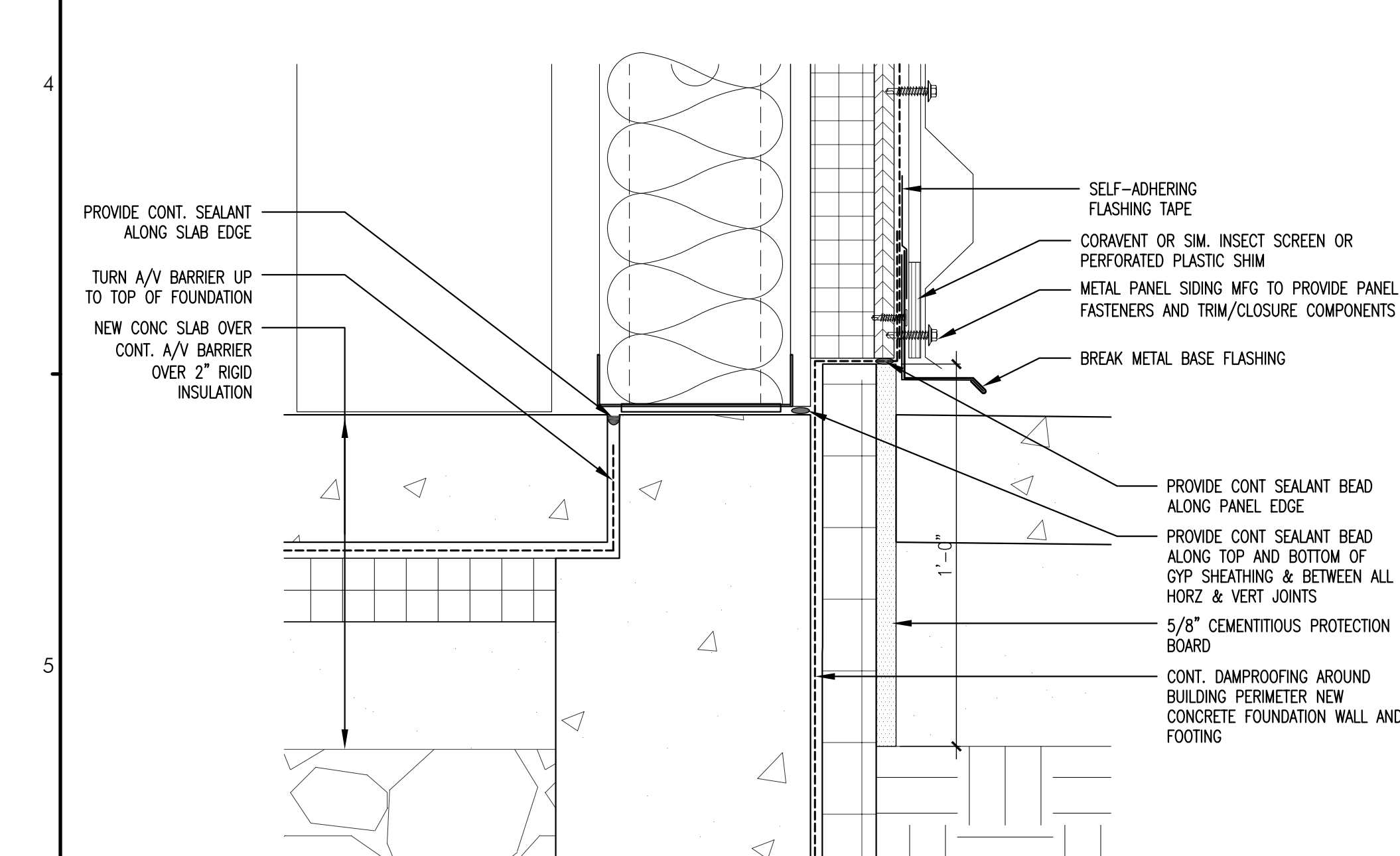
C5 SIDING TRANSITION - SECTION DETAIL
REFERENCED FROM: C5/A6.12 SCALE: 3" = 1'-0"



A2 TYPICAL PARAPET - SECTION DETAIL
REFERENCED FROM: A5/A6.11 SCALE: 3" = 1'-0"



A4 FOUNDATION AT THRESHOLD - SECTION DETAIL
REFERENCED FROM: A5/A6.11 SCALE: 3" = 1'-0"



A5 SLAB EDGE BASE OF WALL - SECTION DETAIL
REFERENCED FROM: C5/A6.11 SCALE: 3" = 1'-0"