

CWS ARCHITECTS
ARCHITECTURE | INTERIOR DESIGN
264 U.S. ROUTE ONE
BOX 6, SUITE 100-2A
SCARBOROUGH, MAINE 04074
F: 207.774.4441
WWW.CWSARCH.COM

OWNER
EARL W. NOYES & SONS
C/O PAUL URENECK

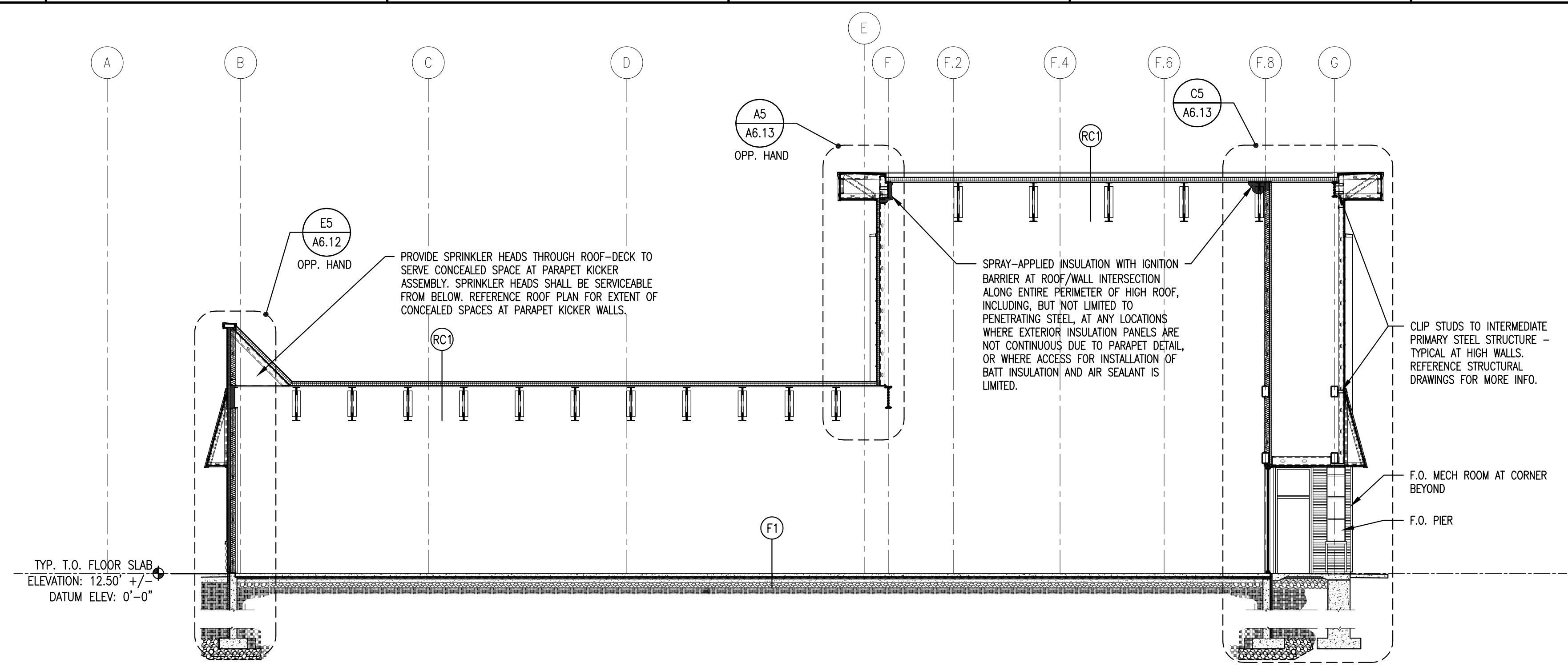
PROJECT
191 MARGINAL WAY
RETAIL CENTER

DRAWING SECTIONS
BUILDING SECTIONS

REVISIONS

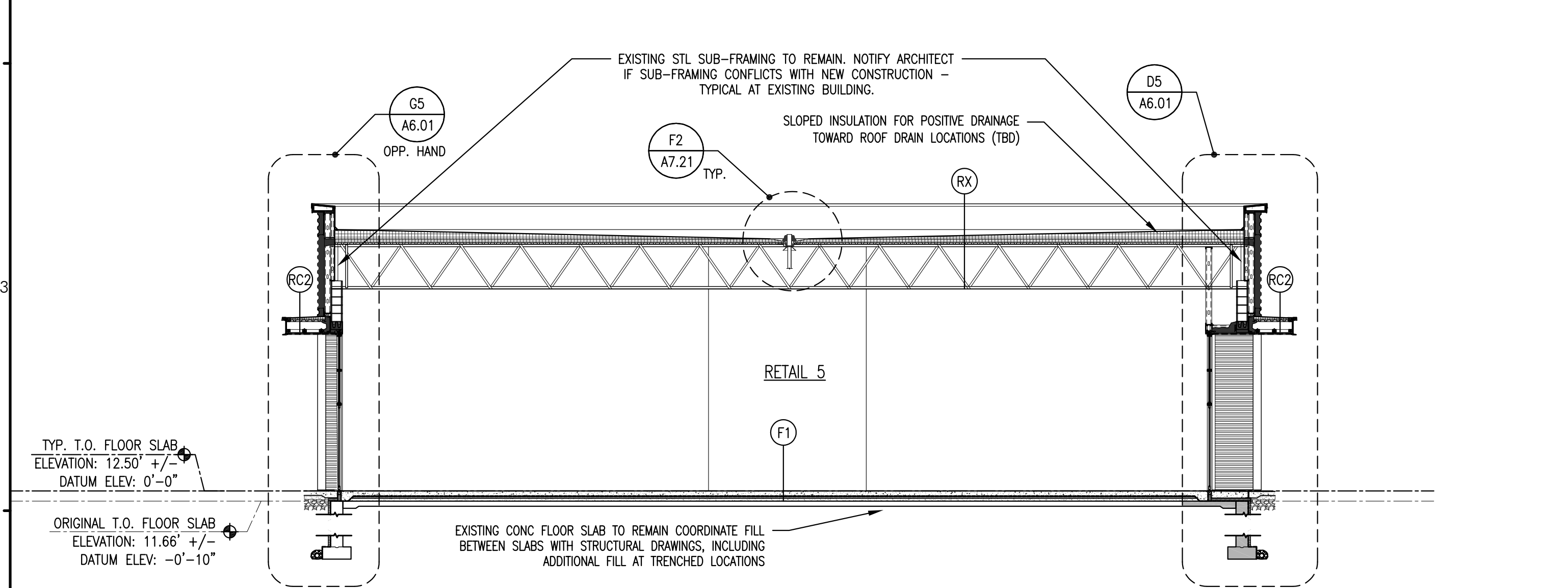
DRAWING NUMBER
A5.01

SCALE: 1/8" = 1'-0"
DATE: 02/10/2017



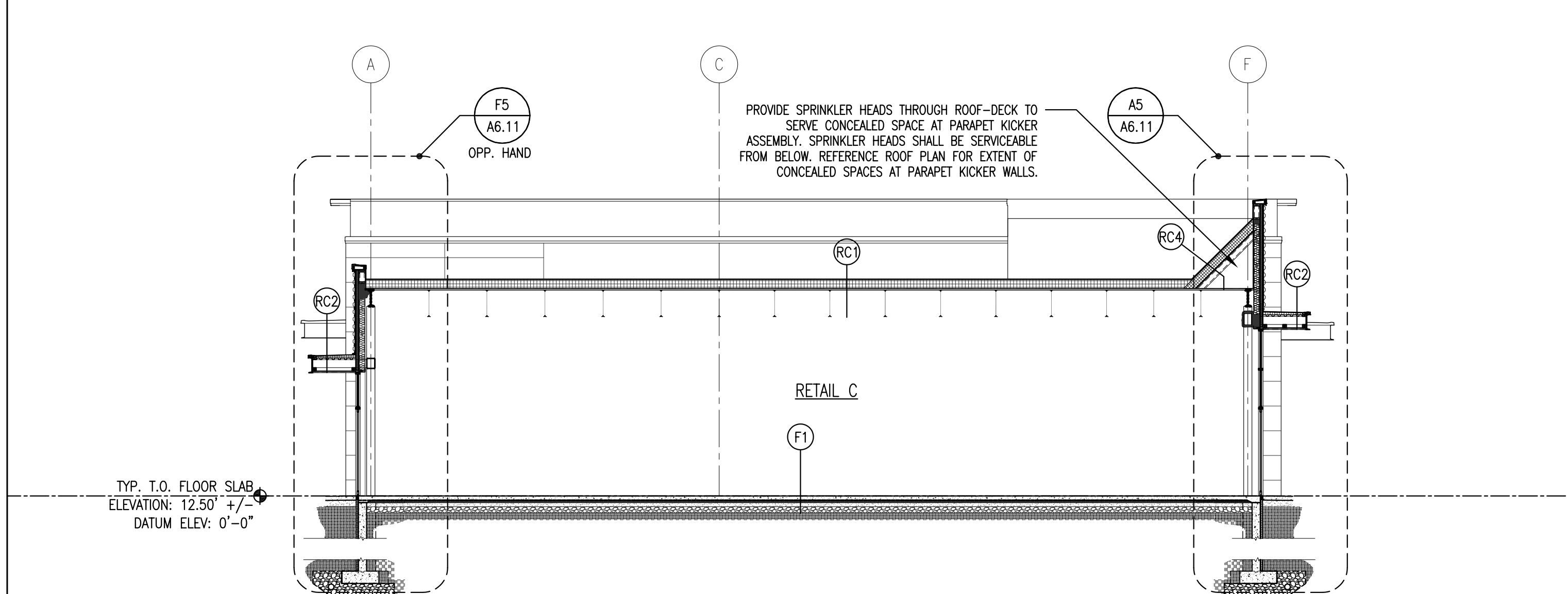
A2 TRANSVERSE BUILDING SECTION - RETAIL A/B
REFERENCED FROM: PLANS

SCALE: 1/8" = 1'-0"



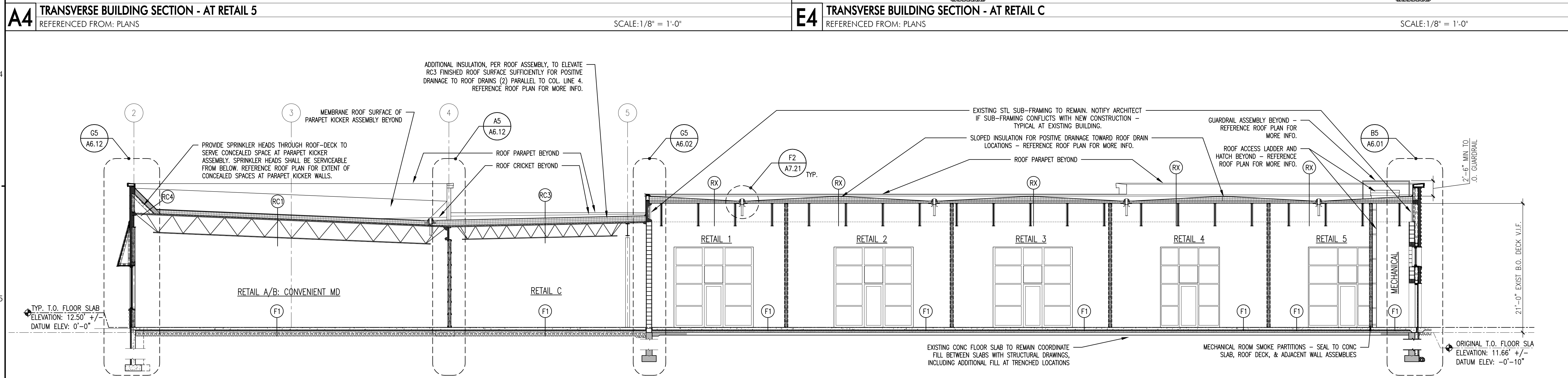
A4 TRANSVERSE BUILDING SECTION - AT RETAIL 5
REFERENCED FROM: PLANS

SCALE: 1/8" = 1'-0"



E4 TRANSVERSE BUILDING SECTION - AT RETAIL C
REFERENCED FROM: PLANS

SCALE: 1/8" = 1'-0"



A5 LONGITUDINAL BUILDING SECTION
REFERENCED FROM: PLANS

SCALE: 1/8" = 1'-0"