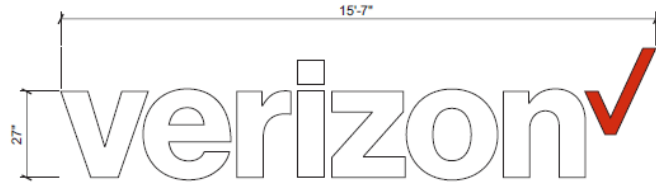
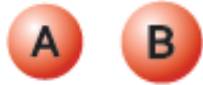


# Verizon Wireless Sign Details



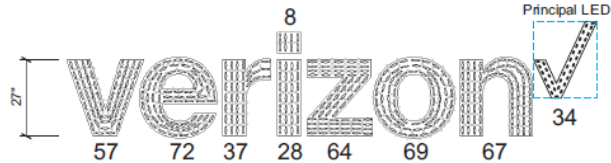
**A B ELEVATION VIEW - 53.7 SF**  
Scale: 3/8" = 1'-0"

**GENERAL SPECIFICATIONS:**

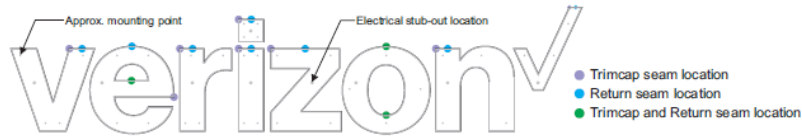
Two (2) sets of 2" deep LED illuminated channel letters flush mounted to wall.  
Letters to be internally illuminated via LED lighting, with power supplies located in remote raceway installed behind wall.  
All elements of letters to have matte finish.  
Letters to mount to wall with mechanical fasteners as required for wall conditions.

**COLOR SPECIFICATIONS**

- 3M #3630-143 Poppy Red Translucent Vinyl / MP #643 Matte PMS 485
- #7328 P95 Matte White Acrylic / MP #6425 SP Matte Hi Hide White

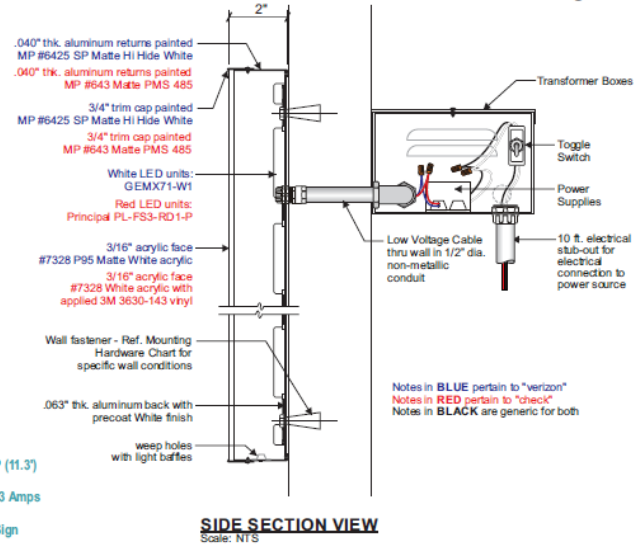


**LED LAYOUT**  
Scale: NTS



**TRIMCAP AND RETURN SEAM LOCATIONS**

## Construction Details - Flush Mount Channel Letters



**SIDE SECTION VIEW**  
Scale: NTS

**E** 402 ea. GEMX71-W1 (201)  
34 ea. Principal PL-FS3-RD1-P (11.3)  
4 ea. GEPS12-60U-NA  
Total Electrical Amp Load = 2.3 Amps  
One (1) 120 Volt - 20 Amp  
Circuit Breaker Required for Sign



	MOUNTING HARDWARE CHART		
	MASONRY	WOOD	METAL
1/4" ZINC PLATED STEEL	•	•	•
THREADED ROD THRU WALL	•	•	•
3/8" LAGS WITH SHIELDS	•	•	•
3/8" LAG BOLTS	•	•	•
3/8" TOGGLE BOLTS	•	•	•

**NOTE:**  
1.) THREADED ROD WILL BE PROVIDED STANDARD  
- ALL OTHER HARDWARE IS TO BE PROVIDED BY THE INSTALLER AS REQ.



Client & Location



3 Somerset St  
Portland ME

Customer Approval Signature

Revisions

Drawing ID

10.26.17

Page #

Drawn By

Sales Rep

WO #