

**GAS FIRED ROOFTOP UNIT SCHEDULE**

**RTU**

No.	Evaporator Fan Data			Cooling Data (Outdoor: 95°db)						Fan Data			Gas Heating Data						Electrical Characteristics						Manufacturer & Model No.	Remarks	
	Total CFM	MIN OA CFM	MAX EXT SP *WG	EAT		Total MBH	Sensible MBH	KW	SEER	Total CFM	MAX EXT SP *WG	HP	Input MBH	Output MBH	AFUE	Gas Pressure		Compressor		Condenser Fan(s)		Evaporator Fan(s)		Volts			Phase
				Db	Wb											Min.	Max.	QTY	RLA	QTY	HP	QTY	HP				
1	4000	1100	.80	80	68	111.5	87.5	10.78	11.3	-	-	-	200	162	81	4.5	14.0	2	18.6	1	3/4	1	3	208	3	TRANE YSC120A3	W/ ROOF CURB
2	1200	120	.80	80	68	39.9	28.4	3.91	10.5	-	-	-	80	63	81	4.5	14.0	1	11.3	1	.20	1	.33	208	3	TRANE YSC036A3	W/ ROOF CURB

NOTES: 1. SET MINIMUM OUTSIDE AIR INTAKE TO 635 CFM.

**FAN SCHEDULE**

**F**

No.	CFM	Available SP *WG	Electrical Data			Accessories						Manufacturer & Model No.	Remarks
			HP	Volts	Phase	Damper	Dis Sw	Screen	Curb	Function	Control		
1 & 2	75	.125	79 WATTS	120	1	BDD	YES	-	-	EXHAUST	INTERLOCK W/ LIGHT SWITCH	PENN Z5HTD	W/ ROOF CAP

**AIR DEVICE SCHEDULE**

**AD/Type/Pattern**

No.	Function	Damper	Description	Finish	Manufacturer & Model No.	Remarks
1	SUPPLY	-	LOUVERED PLAQUE DIFFUSER	WHITE	TITUS DAT, 2 SLOT	-
2	RETURN	-	PERFORATED RETURN GRILLE	WHITE	TITUS 8R	-
3	TOILET ROOM SUPPLY	-	LOUVERED FACE DIFFUSER	WHITE	TITUS TDX-AA	-

NOTES: 1. STYLE AND TYPE TO BE COORDINATED WITH ARCHITECT.  
2. SEE ARCHITECTURAL DRAWINGS FOR PAINT SPEC. IN SALES AREA.

**MECHANICAL INSULATION SCHEDULE**

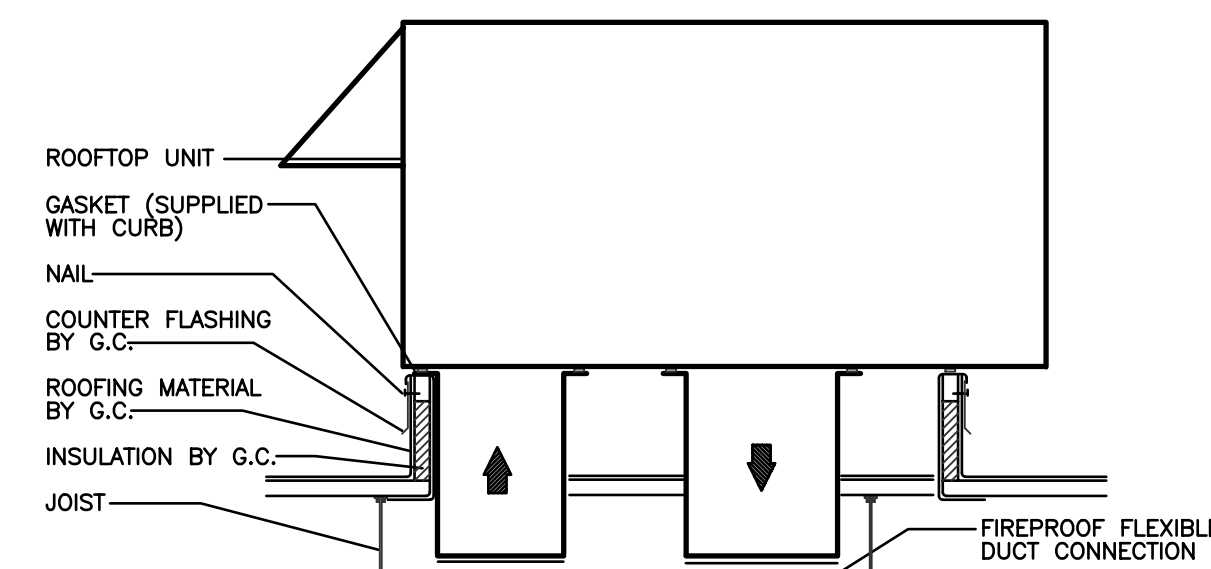
System	Application	Temperature Range	Location	Insulation Type	Thickness/R-Value	Lined or Wrapped	Jacket Type	Vapor Barrier	Finish
AIR DISTRIBUTION	SUPPLY AIR	50°F - 120°F	INDOOR	FIBERGLASS	1"/R=5	WRAPPED	NONE	-	FOIL
AIR DISTRIBUTION	RETURN	60°F - 90°F	INDOOR	FIBERGLASS	1"/R=5	WRAPPED	NONE	-	FOIL

NOTES: 1. EXCLUDES FACTORY INSULATED EQUIPMENT.

**VENTILATION SCHEDULE**

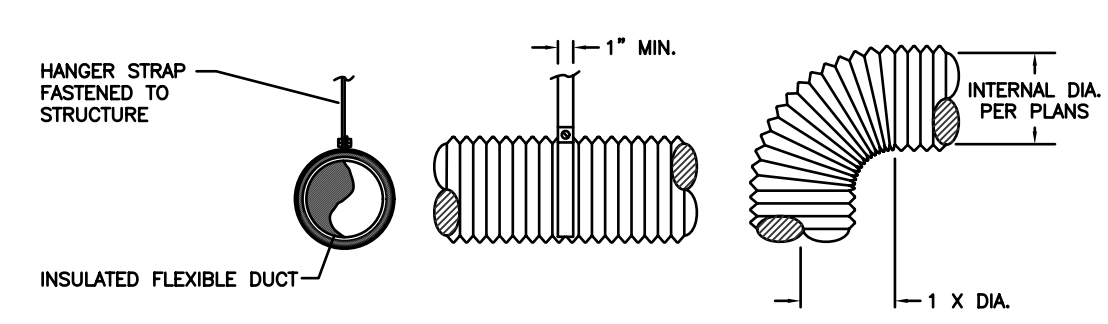
Space	Area (S.F.)	Occupant Load	Ventilation Basis	Required OA CFM
SALES AREA	2751	-	.30 CFM/S.F.	825
WORK/BREAK AREA	275	-	.05 CFM/S.F.	14
INVENTORY/MDF	191	-	.15 CFM/S.F.	13
MANAGER'S OFFICE	85	1	20 CFM/PERSON	20
TOILET ROOM	47	-	100 EXHAUST CFM	-
TOILET ROOM	50	-	100 EXHAUST CFM	-
RESTROOM LOBBY	82	-	.05 CFM/S.F.	5
STORAGE 1	79	-	.15 CFM/S.F.	12
STORAGE 2	80	-	.15 CFM/S.F.	12
<b>TOTAL REQUIRED</b>				<b>901</b>

1. BASED ON ASHRAE 62-1989 PARAGRAPH 6.1.3.3 AND 6.1.3.4.



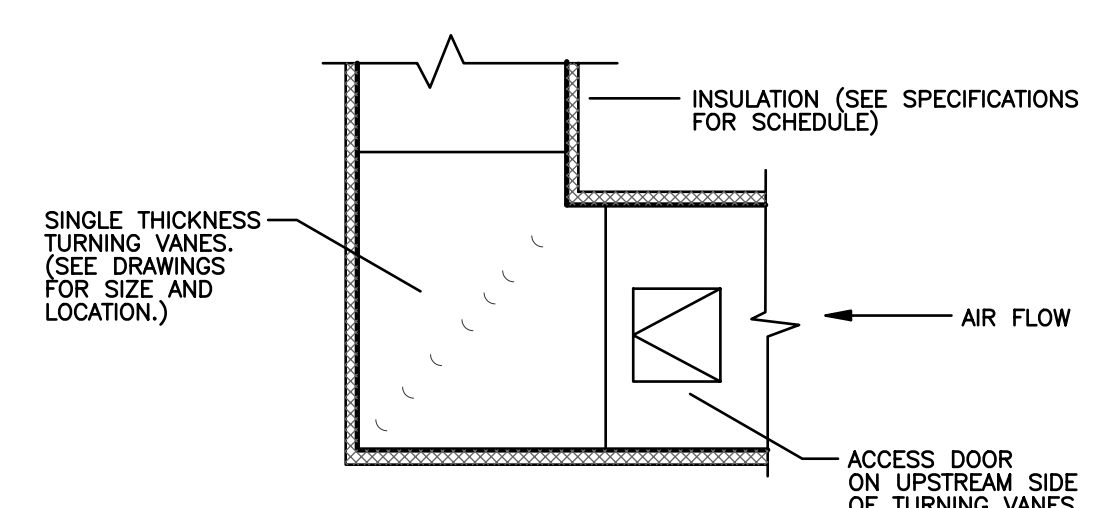
**NOTE:**  
1. THIS DETAIL IS FOR INFORMATION ONLY AND DOES NOT REFLECT ALL ROOFTOP CONFIGURATIONS.  
2. THE CONTRACTOR SHALL PROVIDE INSTALLATION DETAILS FOR APPROVAL BEFORE PROCEEDING WITH WORK.  
3. ATTACH ALL DUCTWORK TO ROOF CURB.

**1 ROOFTOP UNIT CURB DETAIL**  
H2.1 SCALE: NONE



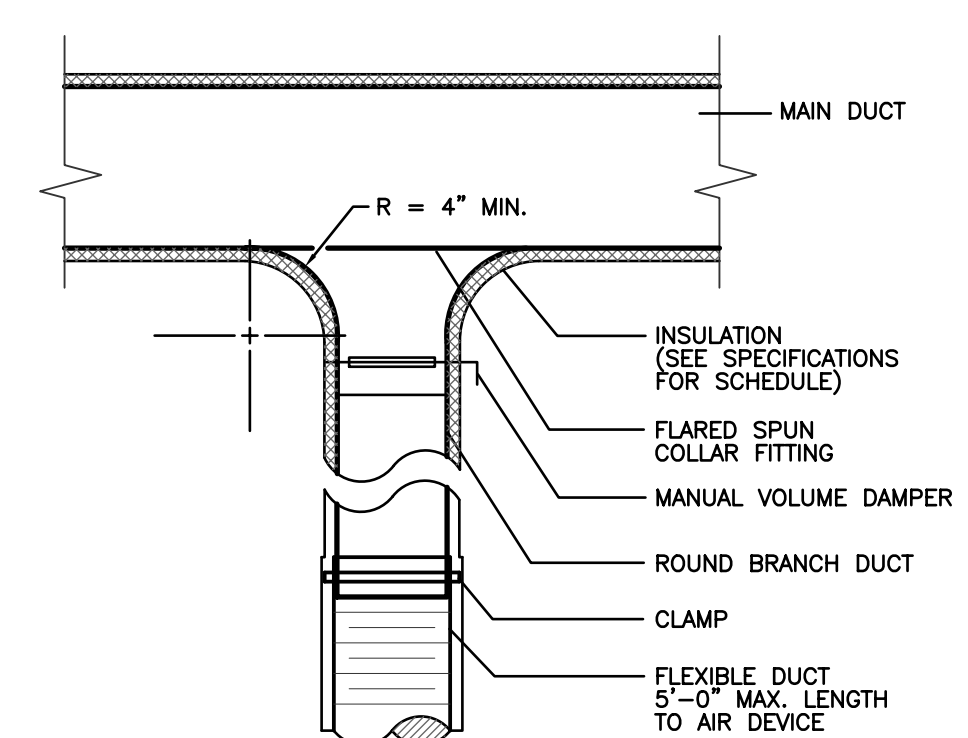
**NOTES:**  
1. STRAP HANGERS SHALL BE SPACED NO MORE THAN 3'-0" APART.  
2. MAXIMUM PERMISSIBLE SAG OF FLEXIBLE DUCT SHALL BE 1/2" PER FOOT OF SPACING BETWEEN HANGERS.  
3. INSTALLATION OF ALL FLEXIBLE DUCT SHALL BE IN ACCORDANCE WITH SMACNA & ASHRAE STANDARDS.

**2 FLEXIBLE DUCT DETAILS**  
H2.1 SCALE: NONE

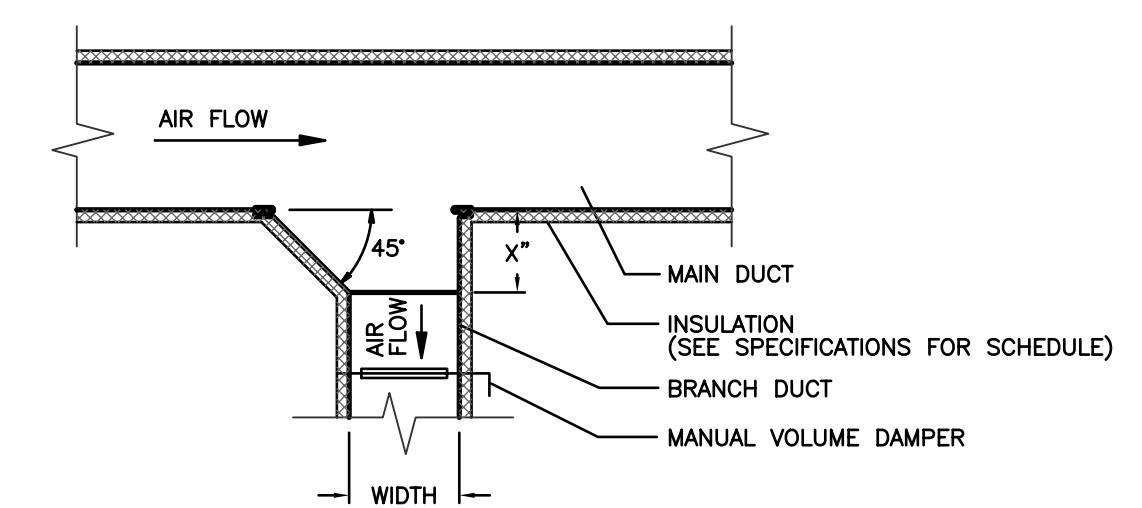


**NOTE:** REFER TO SMACNA GUIDELINES FOR INSTALLATION & CONSTRUCTION DETAILS.

**3 VANED ELBOW DETAIL**  
H2.1 SCALE: NONE



**4 ROUND BRANCH TAKE-OFF DETAIL**  
H2.1 SCALE: NONE



**NOTE:**  
X" = WIDTH OF DUCT  
4" Min.

**5 RECTANGULAR BRANCH DUCT TAKE-OFF DETAIL**  
H2.1 SCALE: NONE

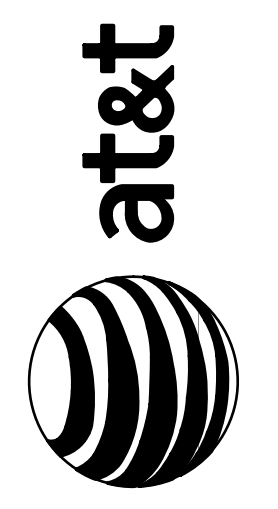
DATE: 08-14-08  
JOB NO: 2982  
DRAWN: G.J.L.  
CHECKED:



711 N. FIELDER RD.  
ARLINGTON, TX 76012  
PH: (817) 635-5696  
FAX: (817) 635-5699

PROJ. COORDINATOR  
15 South 2nd Street  
Philadelphia, PA 19106  
215.922.8930  
FAX: 215.922.4648

RICHARD M. COLE  
& ASSOCIATES



211 MARGINAL WAY  
PORTLAND, MAINE 04101



330 Walnut Street | 11th Floor  
Philadelphia, PA 19106  
TEL 215 923 8270  
FAX 215 923 8272  
www.mwce.net  
a subsidiary of URBAN ENGINEERS, INC.

REVISIONS

**HVAC DETAILS AND SCHEDULES**

SHEET NUMBER

**H2.1**