

711 N. FIELDER RD.
ARLINGTON, TX 76012
PH: (817) 635-5696
FAX: (817) 635-5699

PROJ. COORDINATOR
15 South 3rd Street
Philadelphia, PA 19108
215.922.6900
FAX.922.4549

RICHARD M. COLE & ASSOCIATES



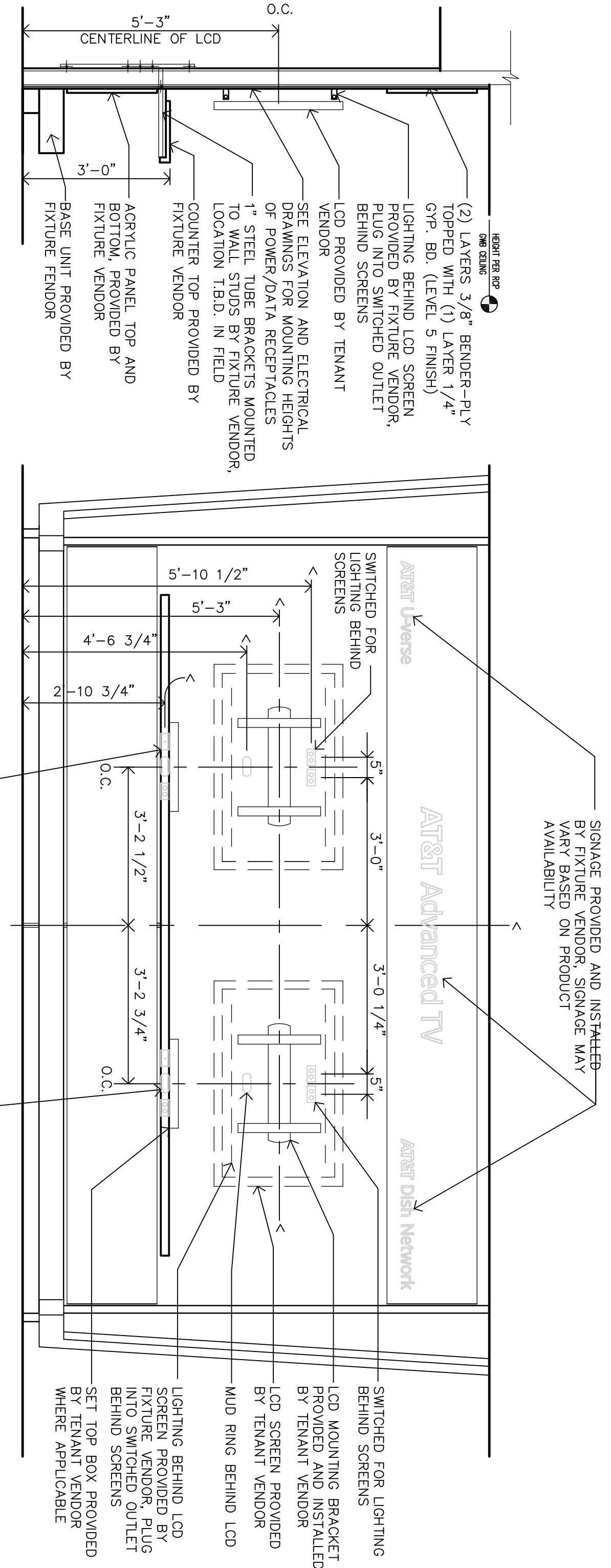
211 MARGINAL WAY
PORTLAND, MAINE 04101

REVISIONS

FIGURE DETAILS

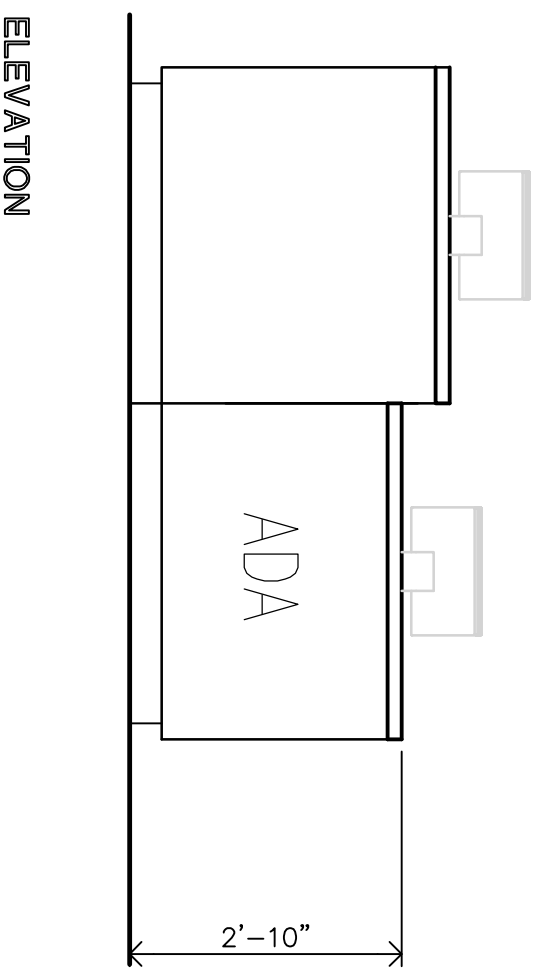
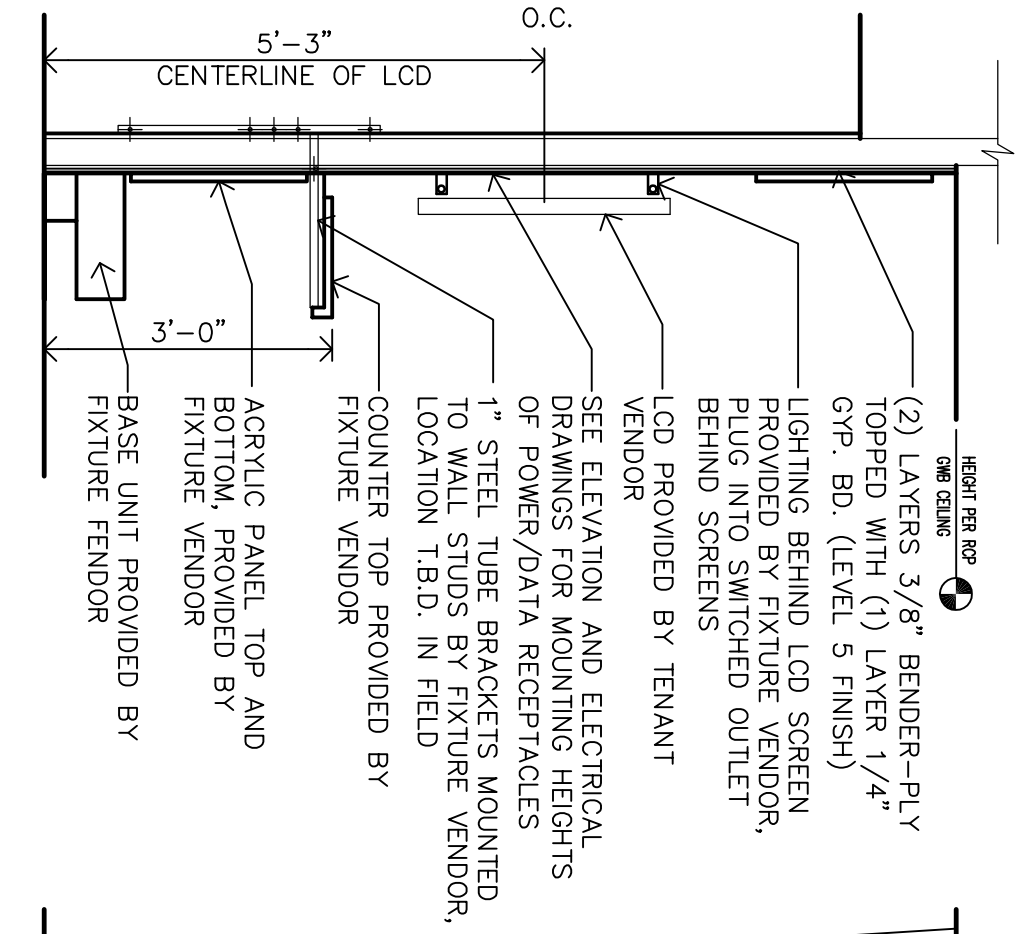
SHEET NUMBER

A-6.5



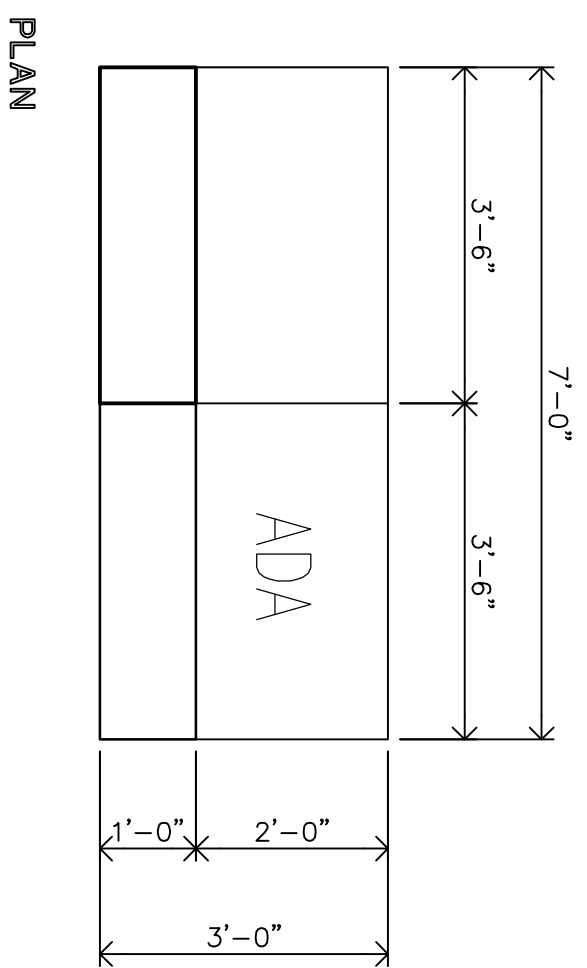
4-6.5 1/2" x 1'-0" ADVANCED TV WALL SECTION/ELEVATION

SIGNAGE PROVIDED AND INSTALLED BY FIXTURE VENDOR. SIGNAGE MAY VARY BASED ON PRODUCT AVAILABILITY



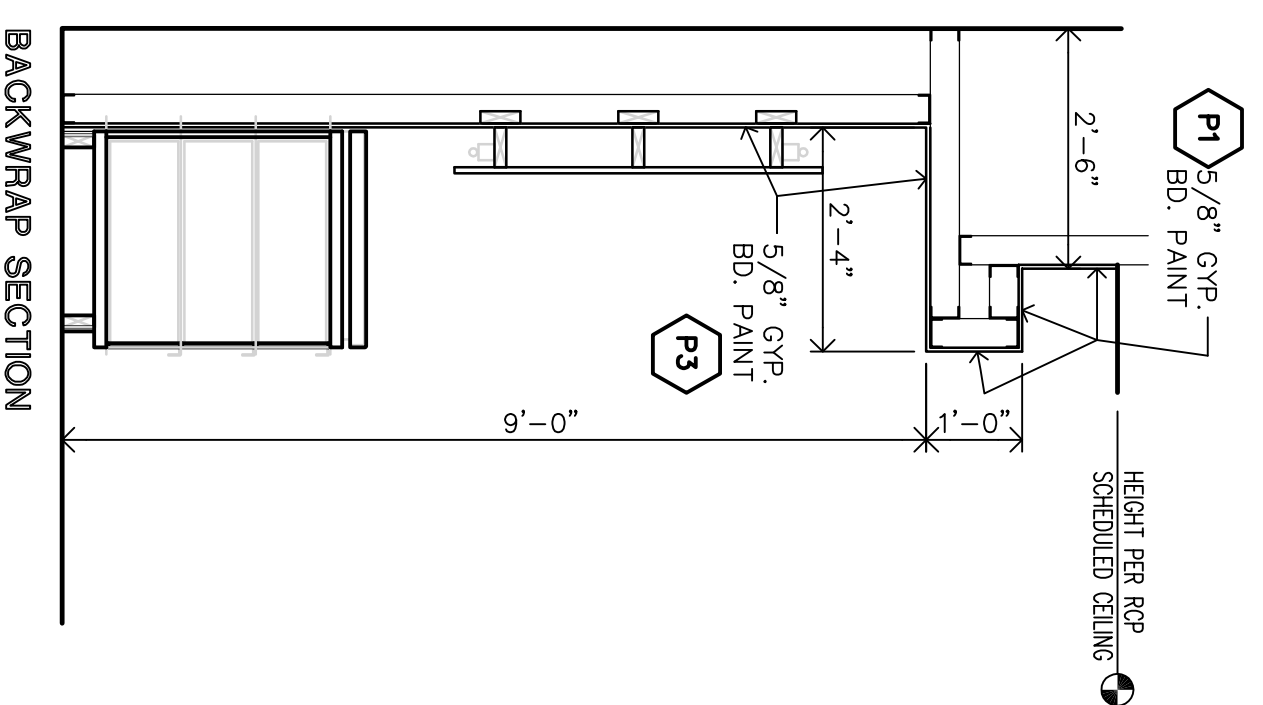
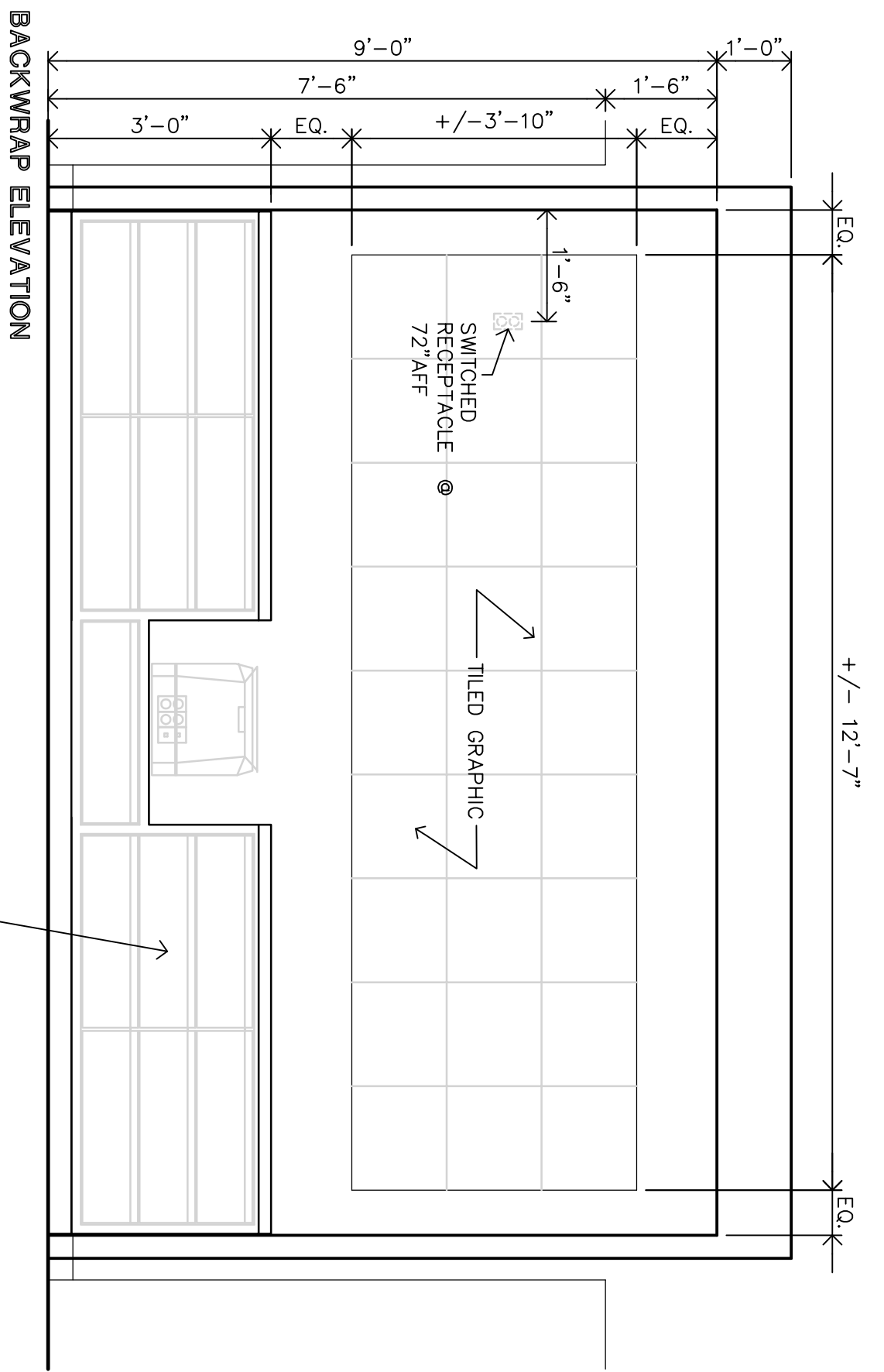
ELEVATION

ADA



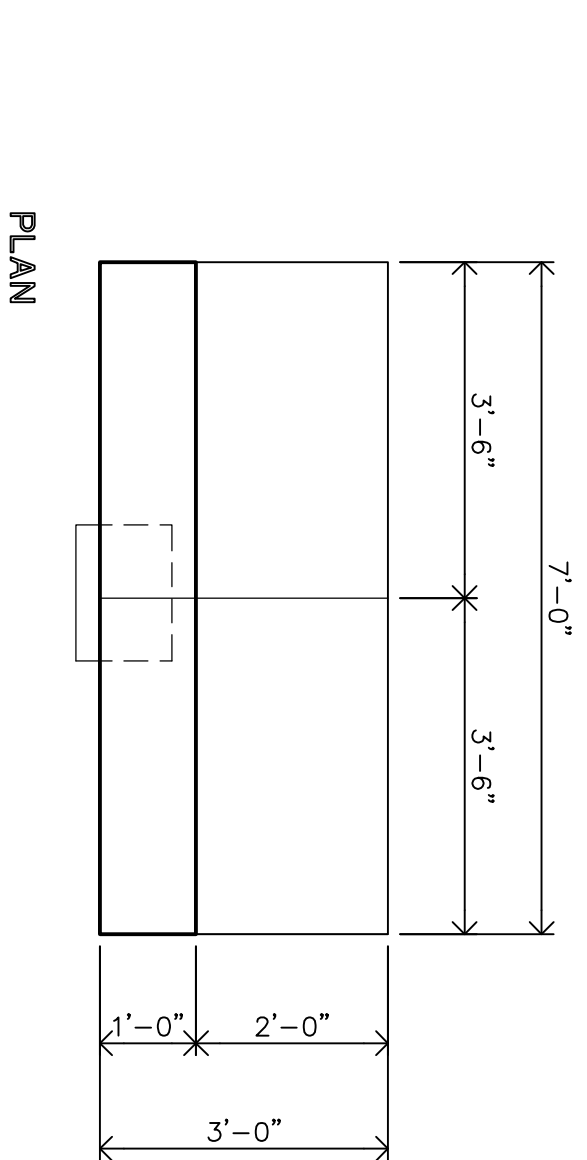
BACKWRAP SECTION

2 2-POS W/ ADA COUNTER
4-6.5 1/2" x 1'-0"



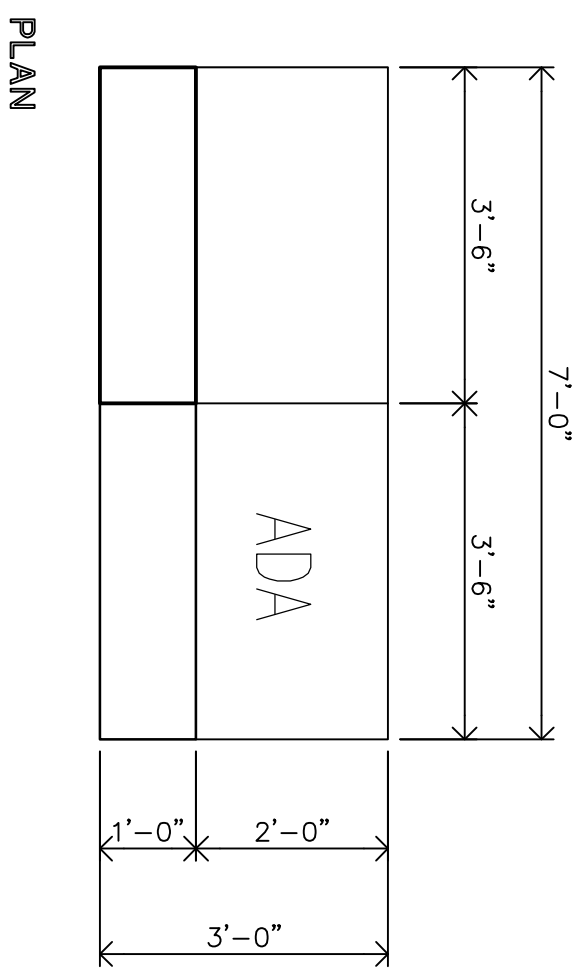
BACKWRAP SECTION

1 2-POS COUNTER
4-6.5 1/2" x 1'-0"



PLAN

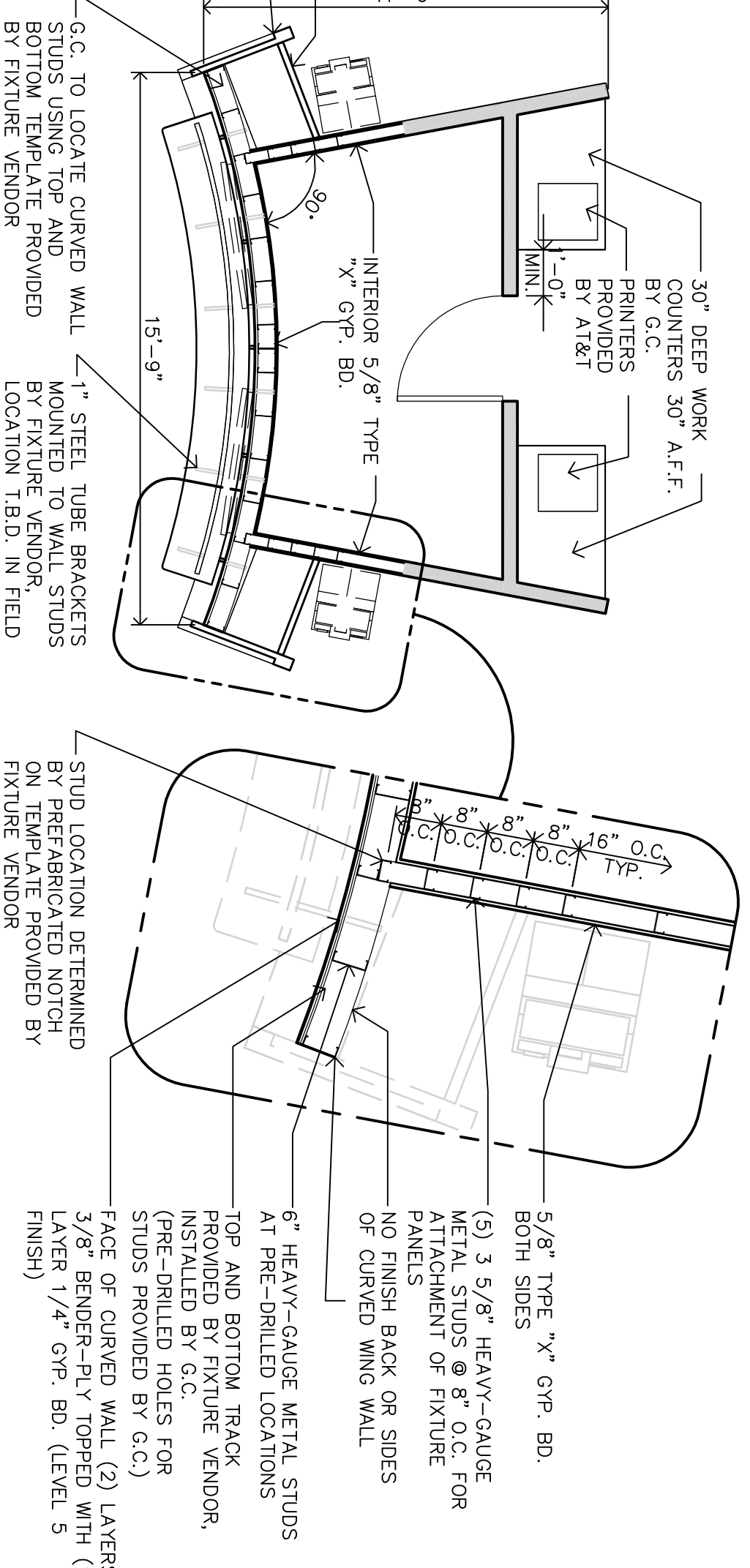
2 2-POS W/ ADA COUNTER
4-6.5 1/2" x 1'-0"



PLAN

BACKWRAP COUNTER AND DRAWERS PROVIDED BY FIXTURE VENDOR

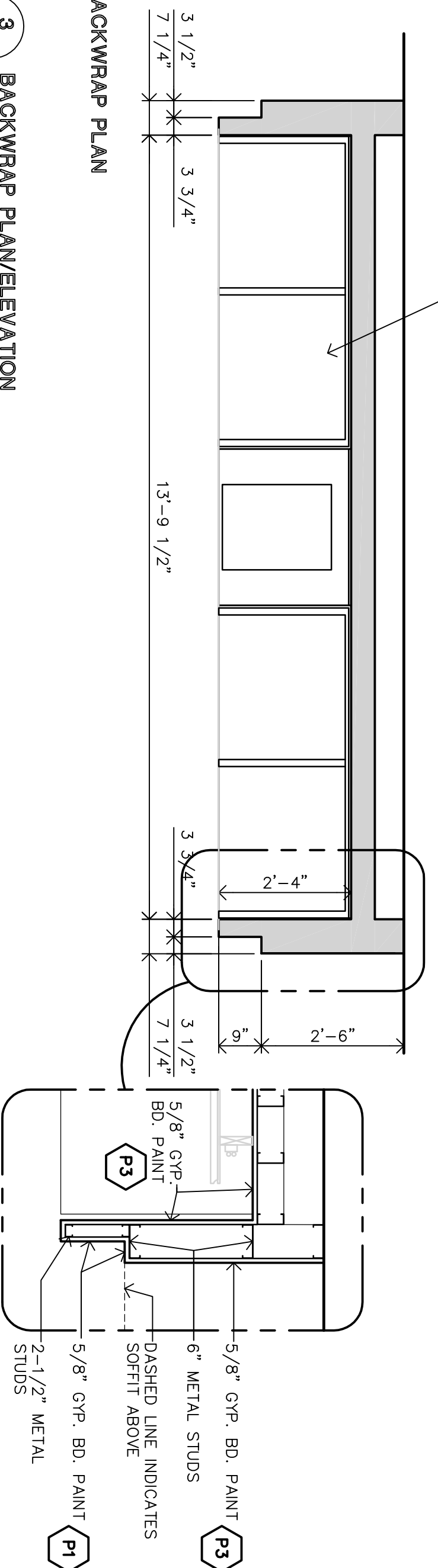
4-6.5 1/2" x 1'-0" ADVANCED TV WALL SECTION/ELEVATION



4-6.5 1/2" x 1'-0" ADVANCED TV WALL SECTION/ELEVATION

4-6.5 VARIES
4 ADVANCED TV WALL SECTION/ELEVATION

3 BACKWRAP PLAN/ELEVATION
4-6.5 1/2" x 1'-0"



BACKWRAP PLAN

BACKWRAP COUNTER AND DRAWERS PROVIDED BY FIXTURE VENDOR