

AT&T – Sign S1 Details

Note – Sign size is fixed. Only backer panel sizing TBD

S1

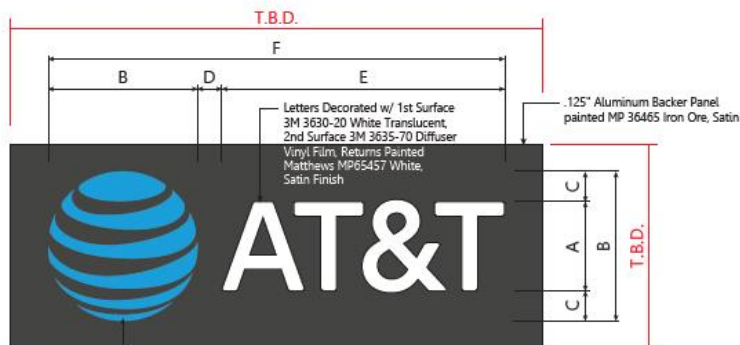
Illuminated Letters- Horizontal Layout

Installation Guidelines

- Remove existing letterset, patch and repaint fascia to like new conditions (Matthews Satin Alum.)
- Install new remote wired illuminated letterset as shown



SURVEY REQUIRED

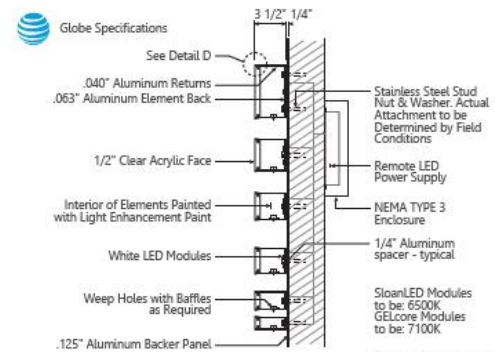


FRONT VIEW
1/4" = 1'-0"

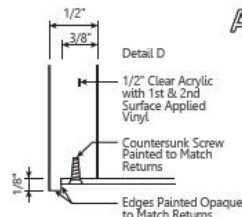
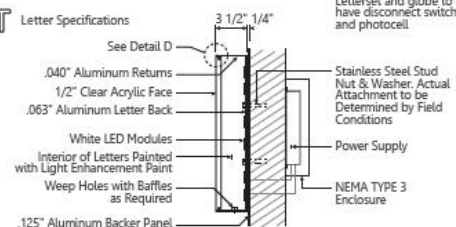
Globe Elements To Be Decorated On 1st Surface with 3M 3630-7775 Blue Translucent Vinyl, 2nd Surface with 3M 3630-7336 Light Blue, Translucent Vinyl, Returns Painted MP77101 Blue, Satin Finish

Retail-IL-30-White Ltrs-Blue Globe-Horiz

A	B	C	D	E	F	sq. ft.
30"	50"	10"	8.15"	94.61"	152.76"	53



AT&T



Client & Location



AT&T
211 Marginal Way
Portland ME

Customer Approval Signature

Revisions

Drawing ID

Date
10.9.17

Page #

Drawn By

Sales Rep

WU #