



**HEMESphere**  
**DESIGN**  
Architecture

58 Fore Street  
Portland, ME 04101  
207.232.6079  
joe@hemespheredesign.com  
www.hemespheredesign.com

PROSPECT



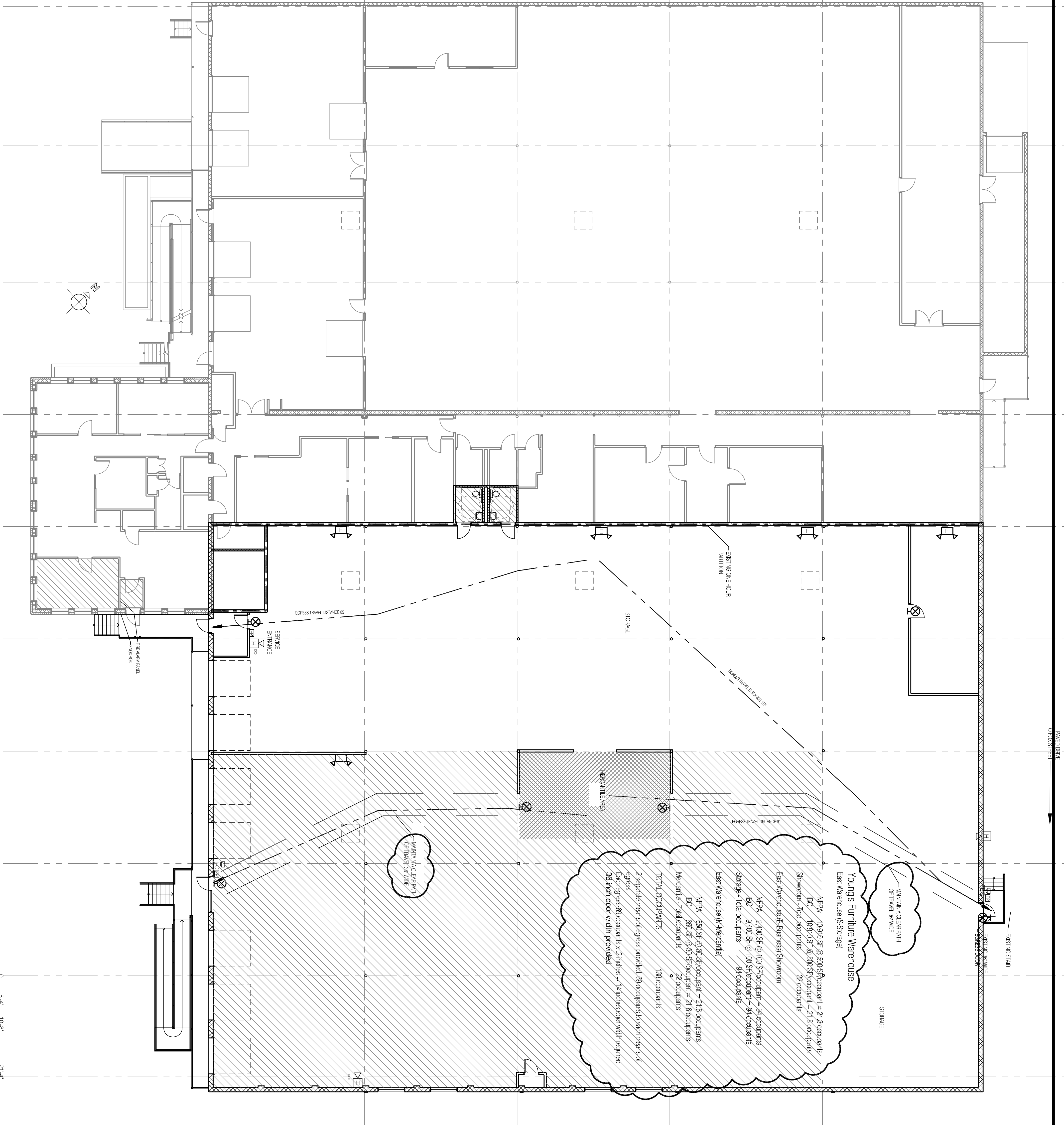
DESIGN  
58 FORE ST. PORTLAND, ME  
www.prospectdesign.me  
T: 207-749-7400

DIAMOND ST. WAREHOUSE RENOVATION  
1-11 DIAMOND ST, PORTLAND, ME  
A.D. BEANER, LLC

LIFE SAFETY AND  
EGRESS PLAN  
  
PERMIT SET

| REVISION | DATE           | DRAWN BY |
|----------|----------------|----------|
|          | August 2, 2016 |          |

LS-101

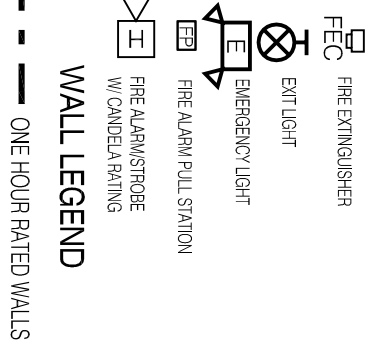


**CODE SUMMARY - Youngs Warehouse**

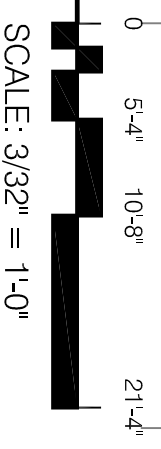
Youngs Furniture occupies the east half of an existing one story warehouse, located at 1-11 Diamond Avenue, near the corner of Fox Street. They are proposing minor changes to the interior space that include a small design (mercantile) area. The mercantile area will be defined by 7 high partitions and displays. The building owner (Coffee by Design) will be providing a new exterior accessible ramp and entrance, as well as, upgrades to the facade.

The building is Construction Type 3, masonry exterior walls and steel framed, steel joist, metal decked roof structure, with approximately 44,722 square feet, and an existing sprinkler system. Coffee by Design occupies the west side of the building.

**LIFE SAFETY EQUIPMENT LEGEND**



#####



SCALE: 3/32" = 1'-0"