

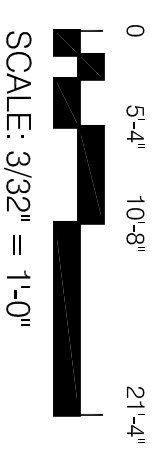
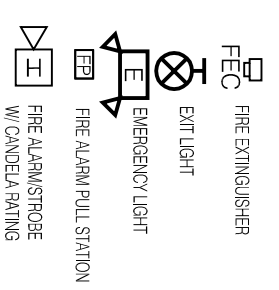
CODE SUMMARY-Occupant Load

Colter by Design (CBD) is purchasing an existing one story warehouse located at 1-11 Diamond Avenue, near the corner of Fox Street. It is Construction Type 3, masonry exterior walls and steel framed, steel joist, metal decked roof structure, with approximately 44,722 square feet, and an existing sprinkler system. The CBD warehouse is for storage, mailing, packaging and distribution of coffee and coffee merchandise, as well as its business office. The remaining space in Area 4 will be leased warehouse space.

Occupant Load	Occupants
Area 1	68
Area 2	56
Area 3	30
Area 4	44
Total	198

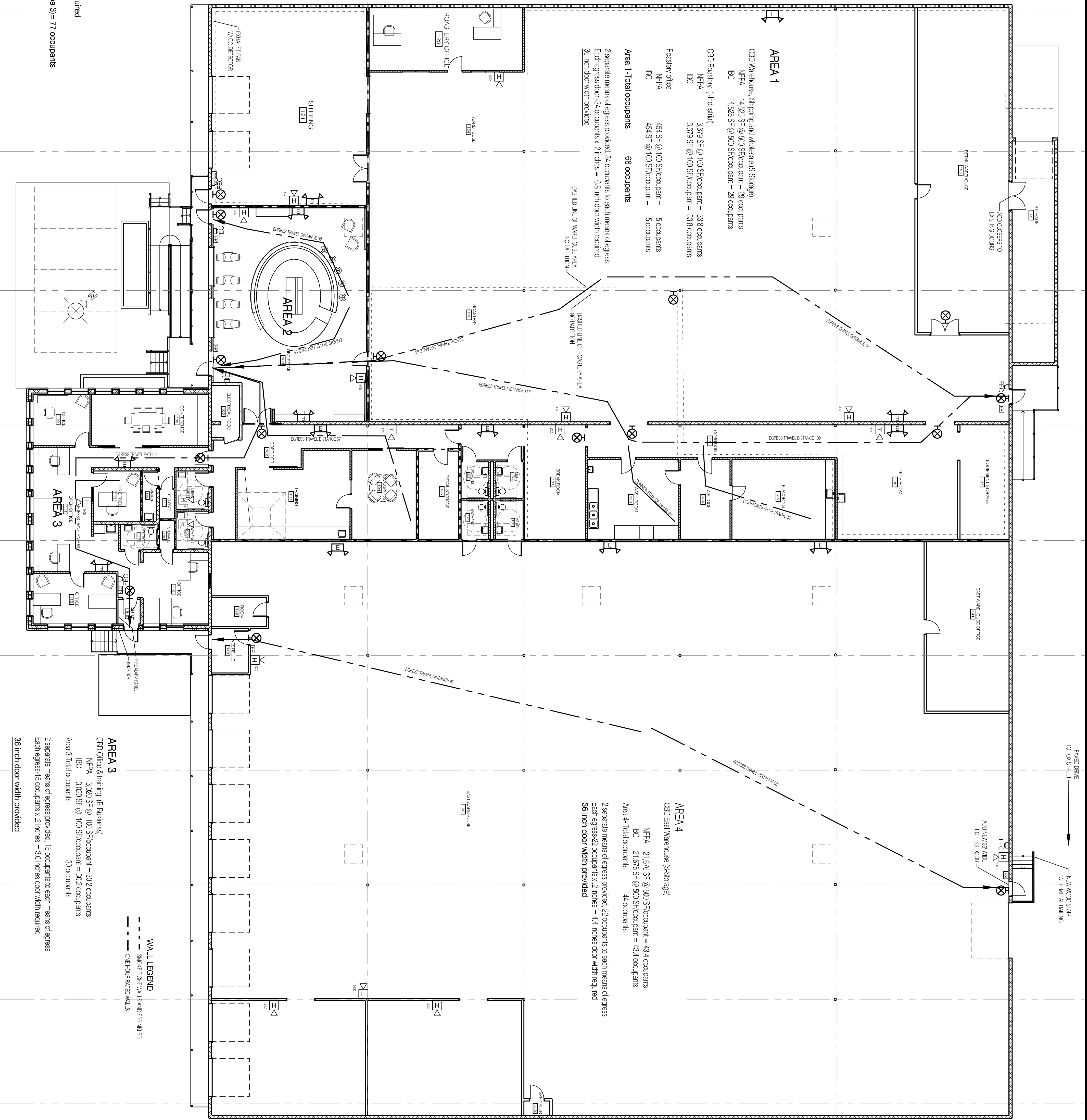
Total Occupant Load for Building- 198 occupants
Total Number of Egresses - 7

LIFE SAFETY EQUIPMENT LEGEND



AREA 2
 CBD Retail (M-Mercantile)
 NFPA 1,668 SF @ 30 SF/occupant = 55.6 occupants
 IBC 1,668 SF @ 30 SF/occupant = 55.6 occupants
 Area 2-Total occupants 56 occupants

2 separate means of egress direct to outside provided.
 28 occupants to each means of egress
 West egress door-28 occupants x 2 inches = 5.6 inches door width required
 36 inch door width provided
 East egress-28 occupants + 34 occupants (Area 1) + 15 occupants (Area 3) = 77 occupants
 77 occupants x 2 inches = 15.4 inches door width required
 36 inch door width provided



AREA 1
 CBD Warehouse, Shipping and Wholesale (S-Storage)
 NFPA 14,525 SF @ 500 SF/occupant = 29 occupants
 IBC 14,525 SF @ 500 SF/occupant = 29 occupants
 CBD Roastery (Industrial)
 NFPA 3,379 SF @ 100 SF/occupant = 33.8 occupants
 IBC 3,379 SF @ 100 SF/occupant = 33.8 occupants
 Roastery office
 NFPA 454 SF @ 100 SF/occupant = 5 occupants
 IBC 454 SF @ 100 SF/occupant = 5 occupants
 Area 1-Total occupants 68 occupants

2 separate means of egress provided, 34 occupants to each means of egress
 Each egress door-34 occupants x 2 inches = 6.8 inch door width required
 36 inch door width provided

AREA 4
 CBD East Warehouse (S-Storage)
 NFPA 21,676 SF @ 500 SF/occupant = 43.4 occupants
 IBC 21,676 SF @ 500 SF/occupant = 43.4 occupants
 Area 4-Total occupants 44 occupants

2 separate means of egress provided, 22 occupants to each means of egress
 Each egress-22 occupants x 2 inches = 4.4 inches door width required
 36 inch door width provided

AREA 3
 CBD Office & Training (B-Business)
 NFPA 3,020 SF @ 100 SF/occupant = 30.2 occupants
 IBC 3,020 SF @ 100 SF/occupant = 30.2 occupants
 Area 3-Total occupants 30 occupants

2 separate means of egress provided, 15 occupants to each means of egress
 Each egress-15 occupants x 2 inches = 3.0 inches door width required
 36 inch door width provided

WALL LEGEND
 --- SMOKE TIGHT WALLS AND SPRINKLED
 - - - ONE HOUR RATED WALLS