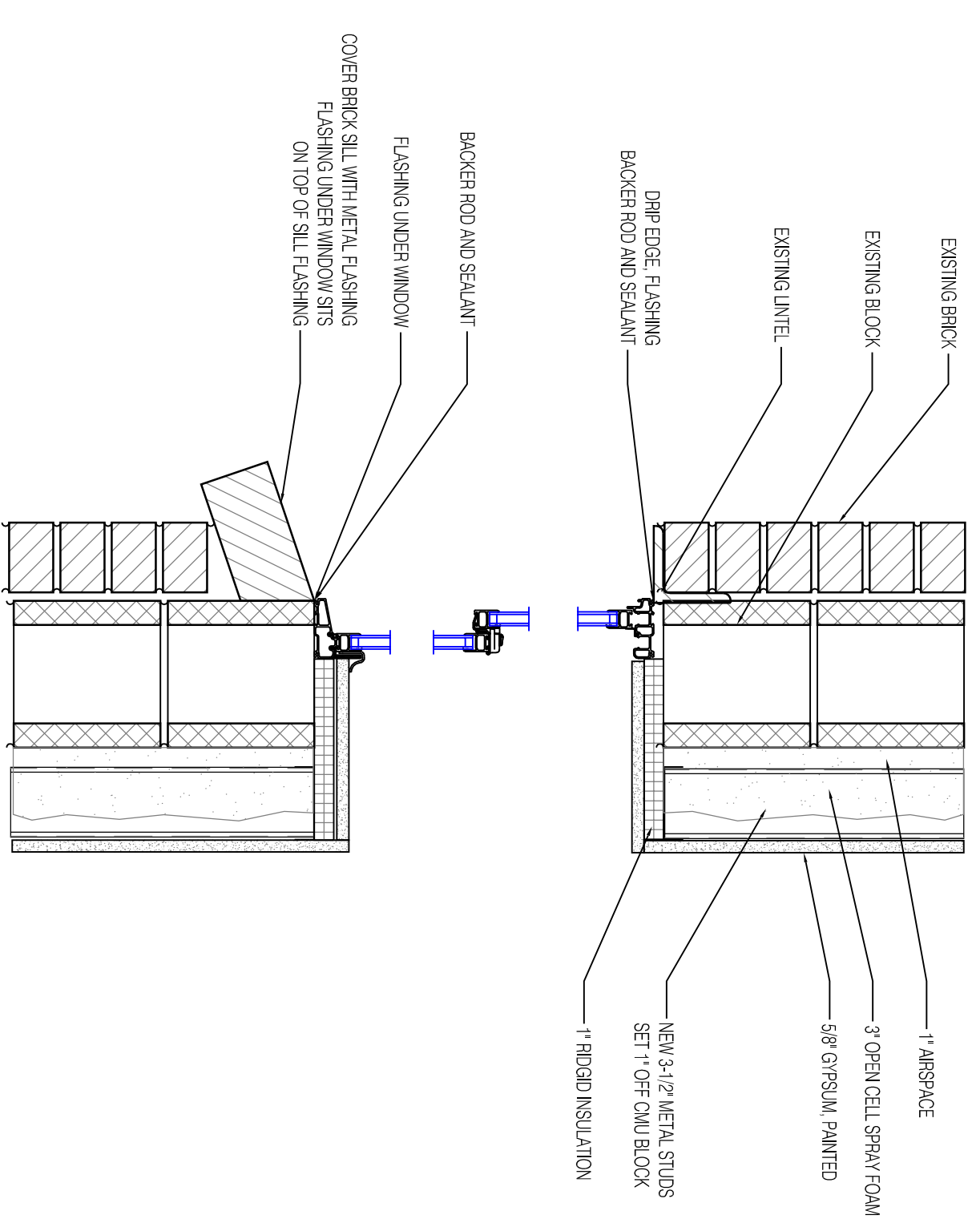


1 HOUR RATED	NON-RATED	PARTITION TYPES
1	2	5/8" GWB TYPE 'X' 6" METAL STUDS @ 24" O.C. 3 1/2" FIBERGLASS BATT INSULATION 5/8" GWB TYPE 'X' FIRE SEALANT TO DECK (ON TYPE 1)
3	4	5/8" GWB TYPE 'X' 3 1/2" METAL STUDS @ 24" O.C. 3 1/2" FIBERGLASS BATT INSULATION SEALANT AT DECK
	5	5/8" GWB TYPE 'X' 6 MIL VAPOR BARRIER TAPED (INSIDE RM) 3 5/8" METAL STUDS @ 24" O.C. 3 1/2" ACOUSTIC BATT INSULATION 5/8" GWB TYPE 'X' ACOUSTICAL SEALANT ALL SIDES
	6	EXISTING 4" BRICK EXTERIOR (OFFICE) EXISTING 8" CONCRETE BLOCK INTERIOR 1" CLEAR AIR SPACE FOR STUDS 3 1/2" SPRAYED OPEN CELL FOAM INSULATION 3 5/8" METAL STUDS @ 24" O.C. 5/8" GWB TYPE 'X' SEALANT ALL SIDES
	7	5/8" GWB TYPE 'X' ACOUSTICAL SEALANT 3 5/8" METAL STUDS @ 24" O.C. 3 1/2" ACOUSTIC BATT INSULATION CHASE SPACE 3 1/2" ACOUSTIC BATT INSULATION 3 5/8" METAL STUDS @ 24" O.C. 5/8" GWB TYPE 'X' ACOUSTICAL SEALANT, ALL SIDES
	B	5/8" GWB TYPE 'X' 3 5/8" METAL STUDS @ 24" O.C. 3 1/2" ACOUSTIC BATT INSULATION ACOUSTICAL SEALANT ALL SIDES

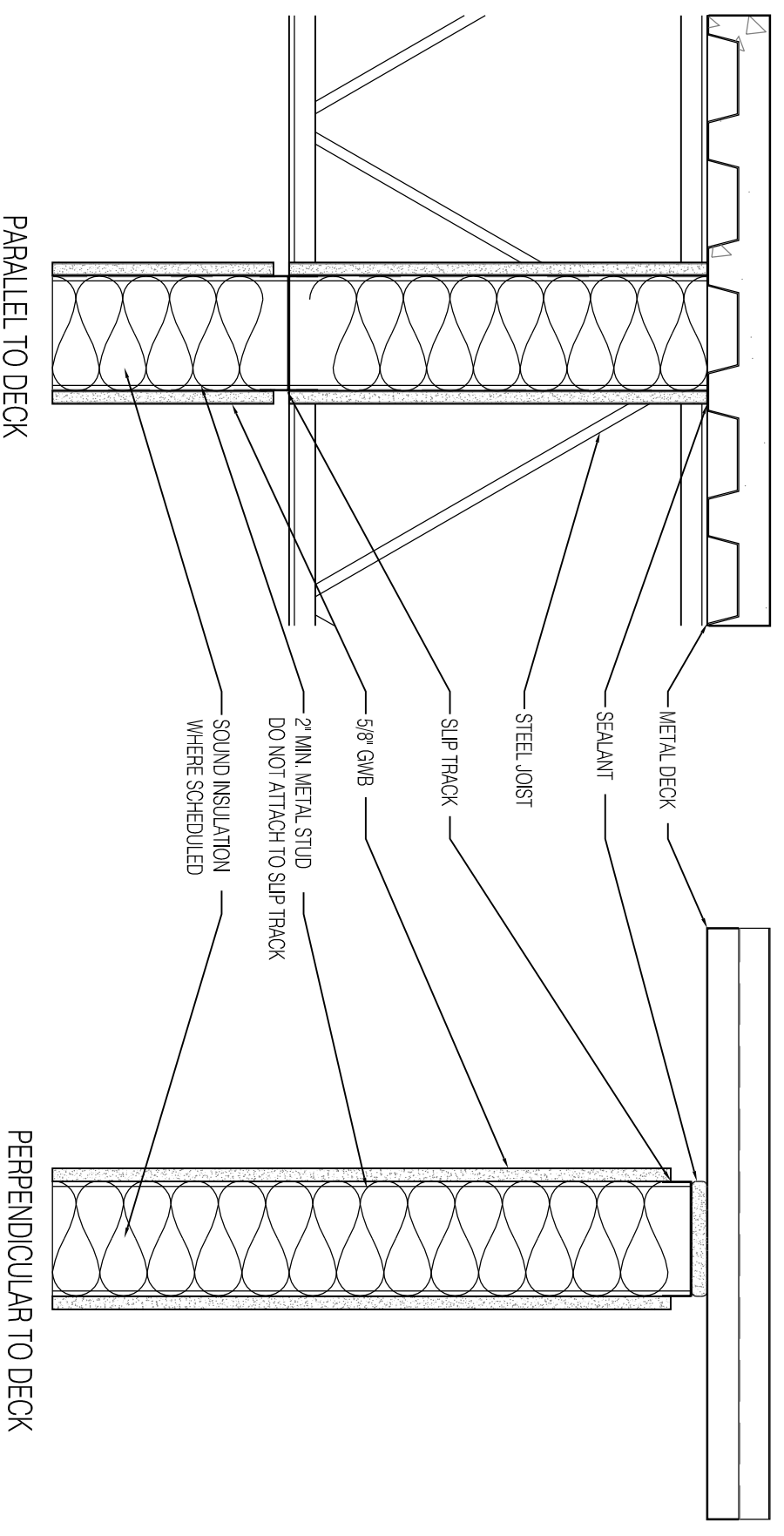
CEILING TYPES	
AS NOTED	
CHASE SIDE	

**GENERAL PARTITION NOTES:**

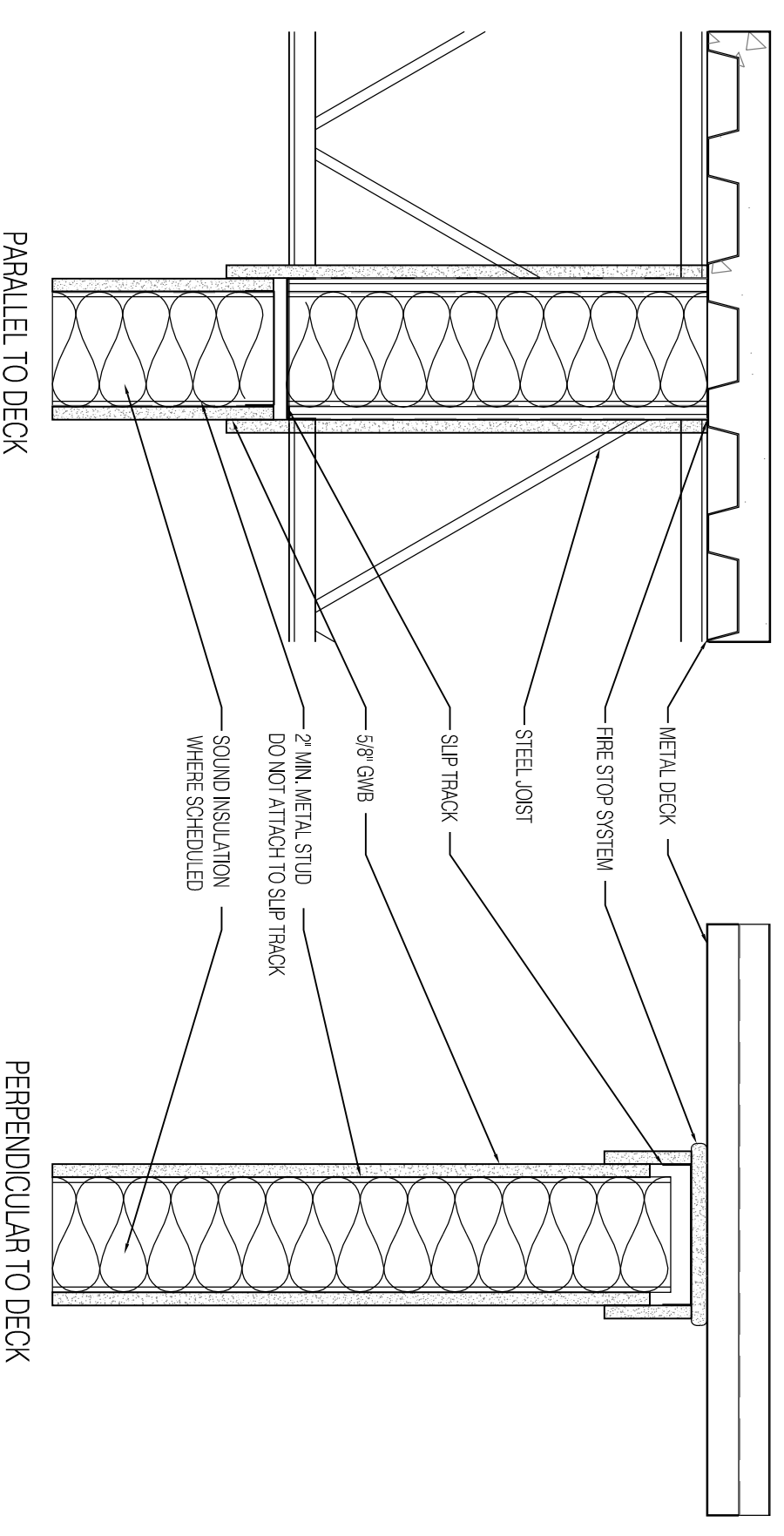
- ALL PARTITIONS ARE CONTINUOUS TO GYP CEILING OR METAL DECK AND SEALED TIGHT TO UNDERSIDE OF THE DECK TO PROVIDE SMOKE BARRIERS AND SOUND-TIGHT ENCLOSURES - EXCEPT WHERE OTHERWISE NOTED. PROVIDE SEALANT SYSTEM COMPLYING WITH FIRE RATED ASSEMBLIES.
- SEAL ALL PENETRATIONS THROUGH WALLS.
- PENETRATIONS THROUGH FIRE-RATED WALLS SHALL BE SEALED WITH FIRE-STOP SEALANT CONFORMING WITH APPROVED INSTALLATION FOR SPECIFIC RATED ASSEMBLIES.
- STUD LAYOUT SHALL CONFORM TO REQUIREMENTS OF FIRE RATED ASSEMBLIES WITH GWB JOINTS CONTINUOUSLY SUPPORTED BY STEEL STUDS OR FRAMING.
- ALL STUD WALLS UNDER BEAMS & DECKS SHALL HAVE DEFLECTION JOINTS. SEE TYPICAL DEFLECTION JOINT DETAILS ON THIS SHEET
- PROVIDE 20 GA. STEEL STUDS FOR PARTITIONS TO RECEIVE TILE BACKER BOARD & CERAMIC TILE.
- REFER TO STRUCTURAL DRAWINGS FOR TOP OF WALL BRACING.
- PROVIDE TILE BACKER BOARD AT WALLS SCHEDULED TO RECEIVE CERAMIC TILE. PROVIDE TILE BACKER BOARD AT ALL LOCATIONS WITHIN 3'-0" OF PLUMBING FIXTURES. IF NO BACKER BOARD.
- ACOUSTIC BATT INSULATION TO BE ADHERED TO GWB OR SUPPORTED BY INSUL-HOLD OR EQUIVALENT DEVICE.
- JANITOR 105 & 119, STORAGE 118 SHALL BE SPRINKLED AND SMOKE TIGHT IN LIEU OF 1-HOUR RATED



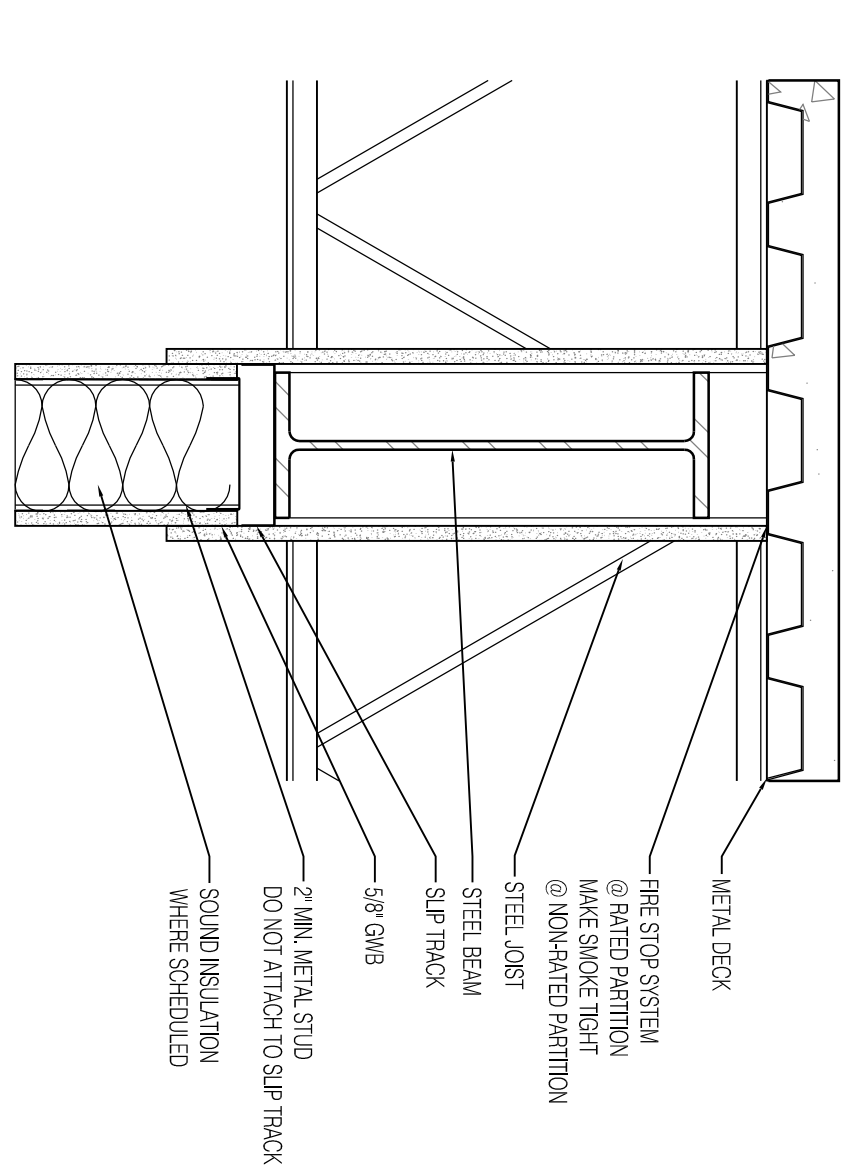
4 BRICK/CMU WALL DETAIL, PARTITION #6  
1/16" = 1'-0"



1 PARTITION TO METAL DECK - SLIP JOINT - TYPICAL  
1/16" = 1'-0"



2 PARTITION TO METAL DECK - SLIP JOINT - 1-HOUR  
1/16" = 1'-0"



3 PARTITION TO BEAM - SLIP JOINT  
1/16" = 1'-0"

PARTITION DETAILS & SCHEDULE

PERMIT SET

DIAMOND ST. WAREHOUSE RENOVATION  
1-11 DIAMOND ST, PORTLAND, ME  
A.D. BEANER, LLC

PROSPECT DESIGN ARCHITECTURE | EXHIBITIONS  
207.749.7400 | prospectdesignme

HEMES **phara** DESIGN LLC

CONSTRUCTION

SHEET TITLE  
REVISION  
DRAWING: 99  
DATE: March 12, 2013

A-601