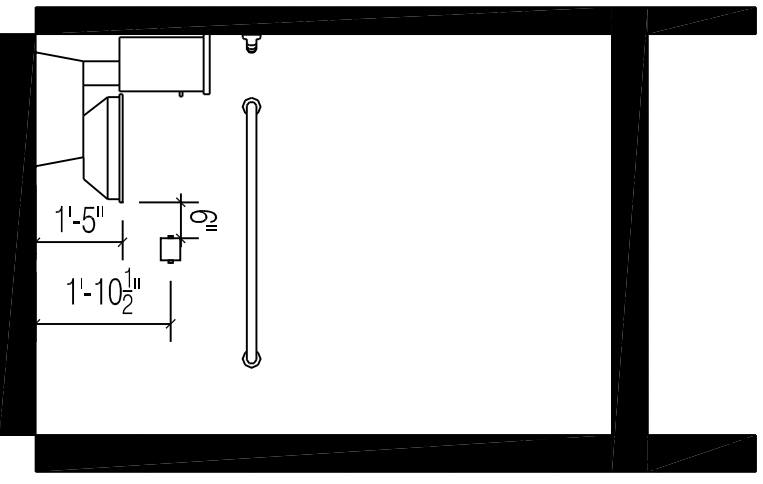
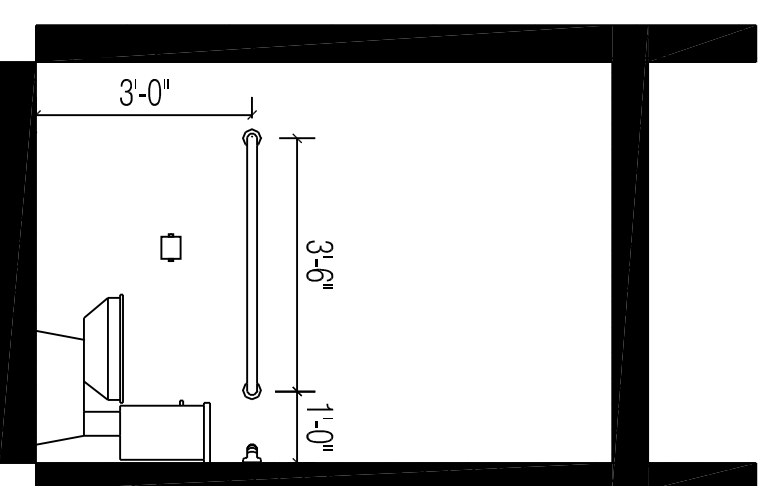


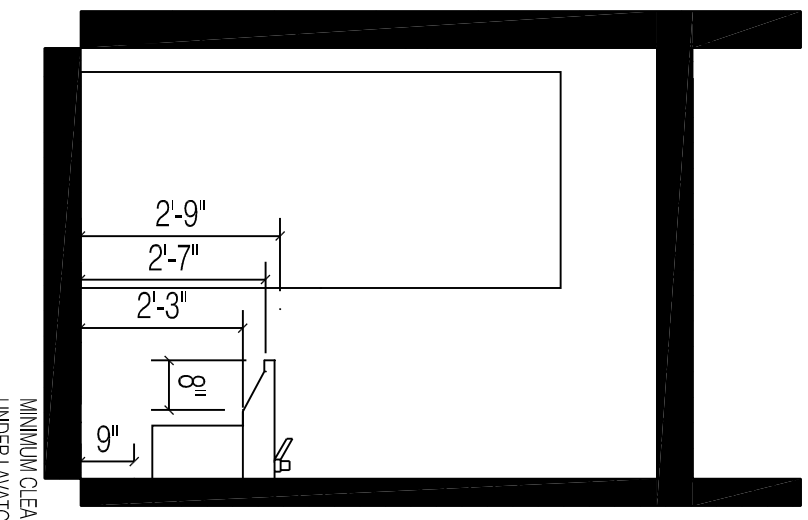
1 BATHROOM ELEVATION 1
3/8" = 1'-0"



2 BATHROOM ELEVATION 2
3/8" = 1'-0"



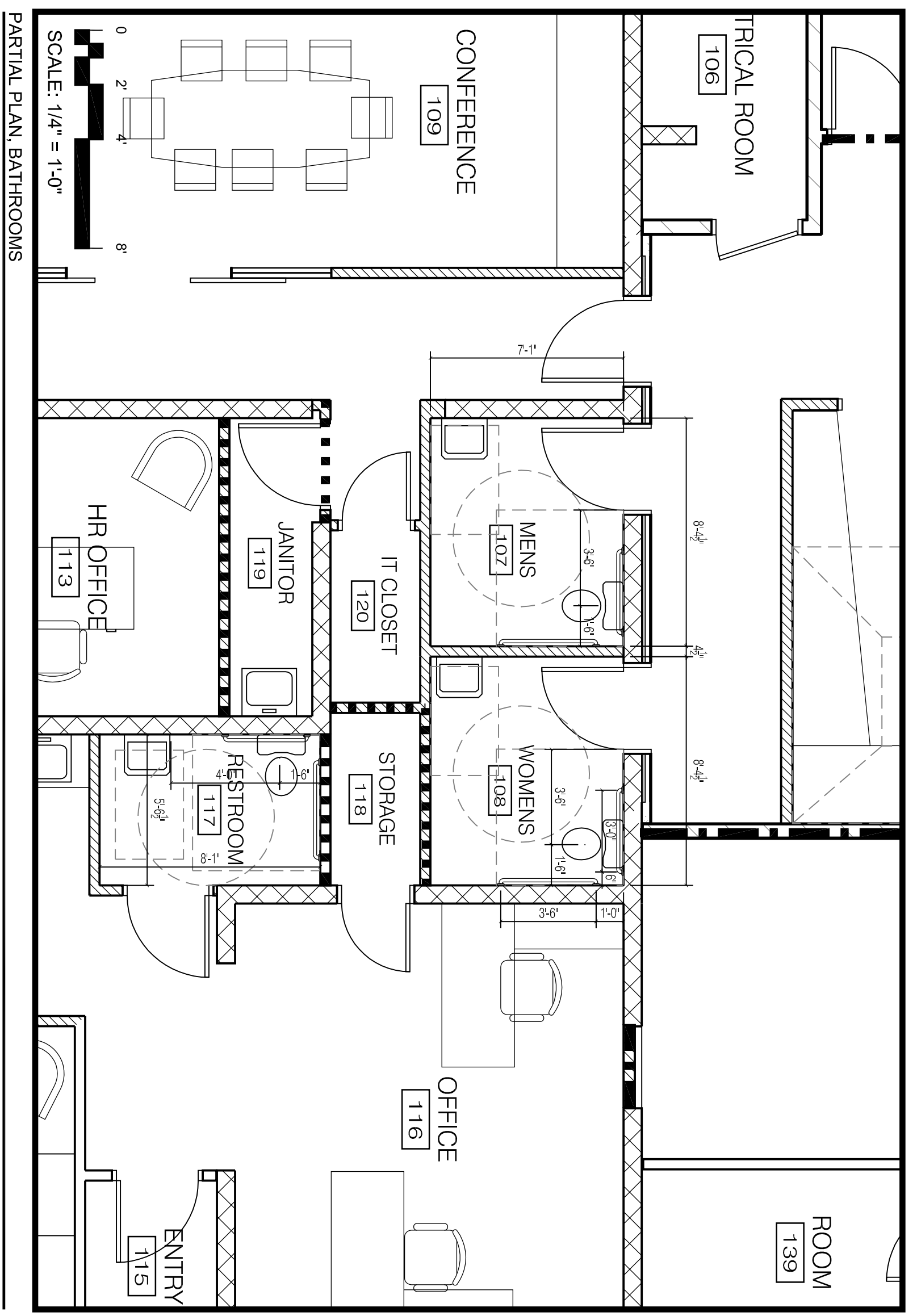
3 BATHROOM ELEVATION 3
3/8" = 1'-0"



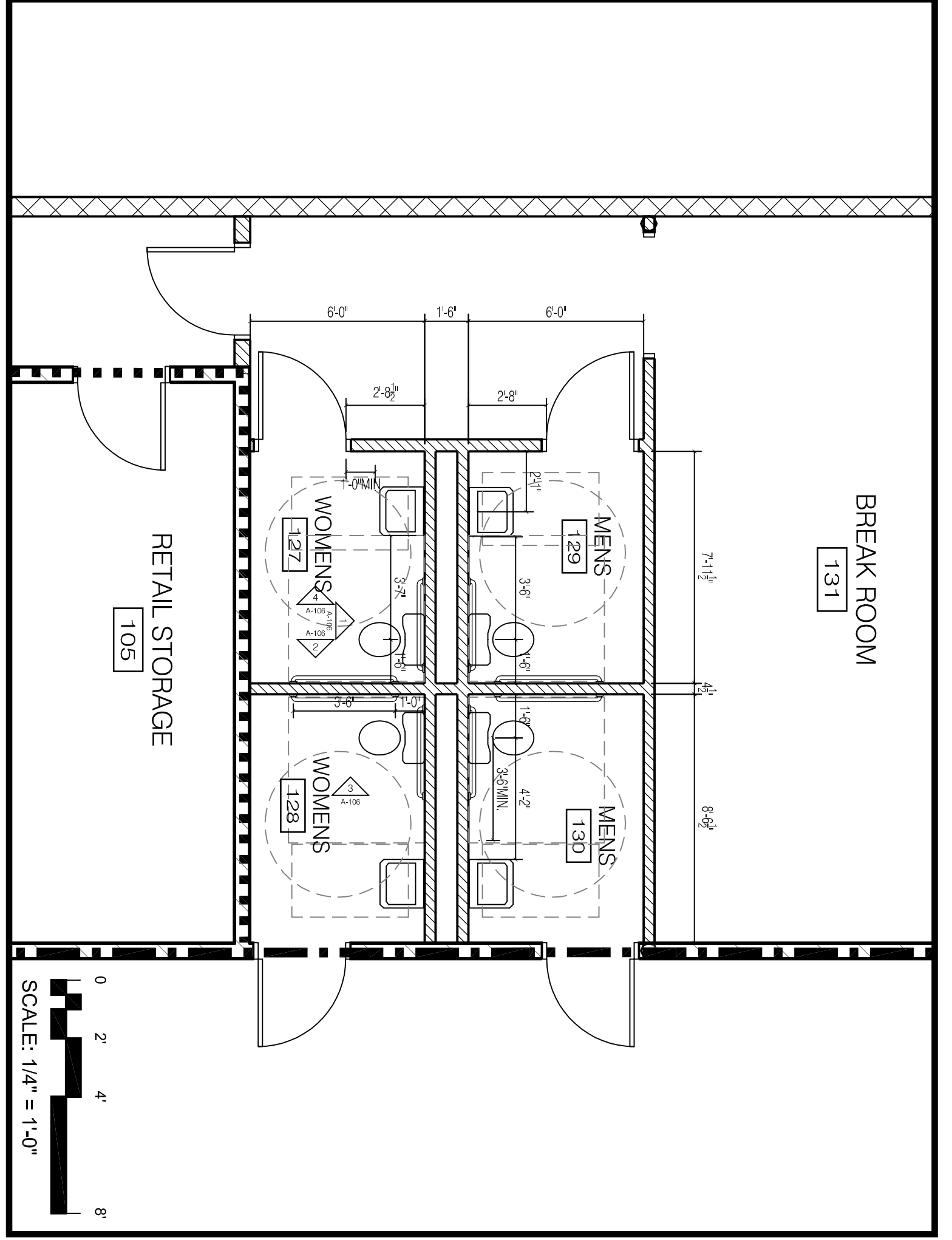
4 BATHROOM ELEVATION 4
3/8" = 1'-0"

- NOTES:
1. MAINTAIN ALL MINIMUM CLEARANCES SHOWN IN ELEVATIONS
 2. MIRRORS TO BE CENTERED OVER SINKS.
 3. MIRROR APPROPRIATE EQUIPMENT WALLS BEHIND MIRRORS.
 4. INSTALL SINKS ON BEING OWNERS SUPPLIED EQUIPMENT AS WELL AS CONTRACTOR SUPPLIED EQUIPMENT.
 5. CONTRACTOR RESPONSIBLE FOR MEETING A.D.A.G.S. CODE FOR HANDICAP ACCESSIBLE MOUNTING HEIGHTS SHOWN IN SECTIONS 416-424 OF THE 2011 IBC AND THE SAME FOR MEN'S HEIGHTS SET.
 6. WATER PIPES TO BE APPROVED INSULATION OF WASTE & HOT WATER PIPES.
 7. BATHROOM ELEVATIONS SHOWN FOR WOMEN'S ROOMS 127 & 128.
 8. MIRROR S.H.C. APPROVED.

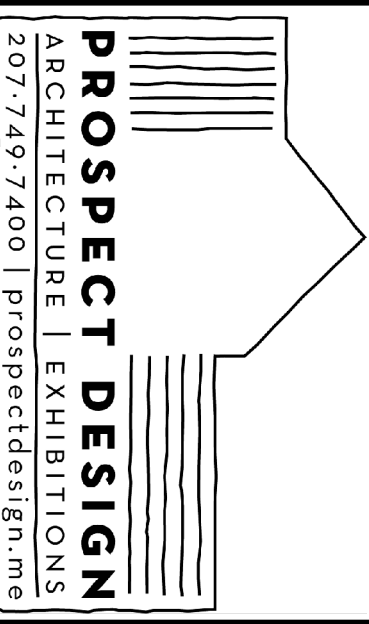
TYPICAL BATHROOM DETAILS
3/8" = 1'-0"



PARTIAL PLAN, BATHROOMS
1/4" = 1'-0"



PARTIAL PLAN, BATHROOMS
1/4" = 1'-0"



HEMESphera
DESIGN LLC



CONSTRUCTION

DIAMOND ST. WAREHOUSE RENOVATION
1-11 DIAMOND ST, PORTLAND, ME

A.D. BEANER, LLC
43 WASHINGTON AVENUE, PORTLAND

SHEET TITLE
BATHROOM PLANS AND ELEVATIONS

PERMIT SET

DESIGNER
DATE: March 13, 2013

A-106