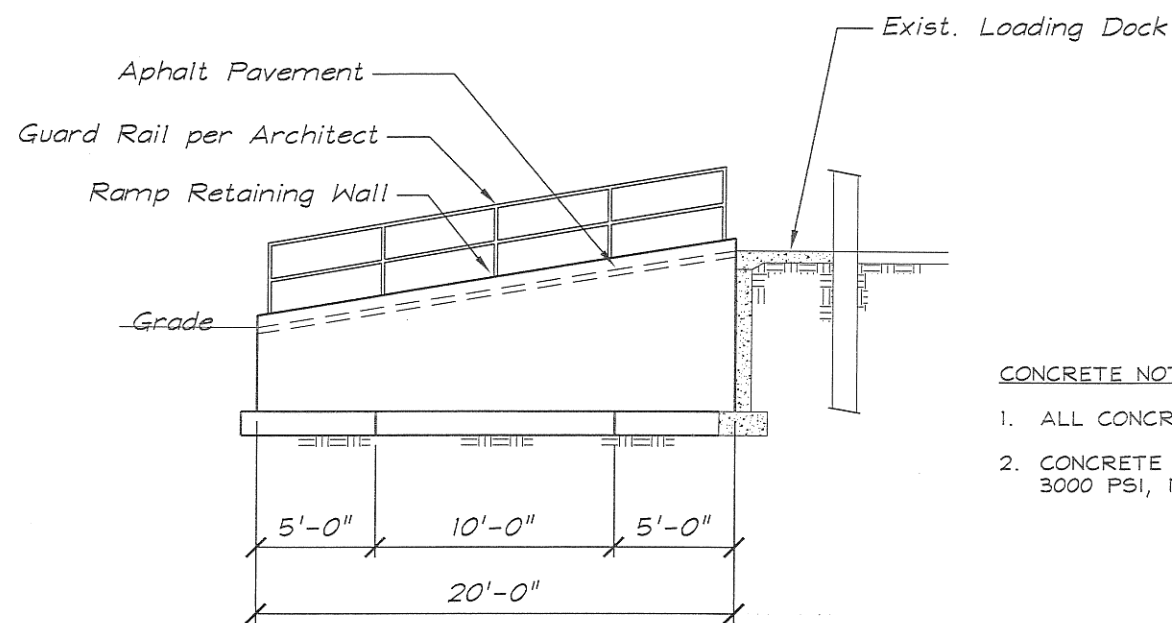


DELIVERY RAMP - PLAN

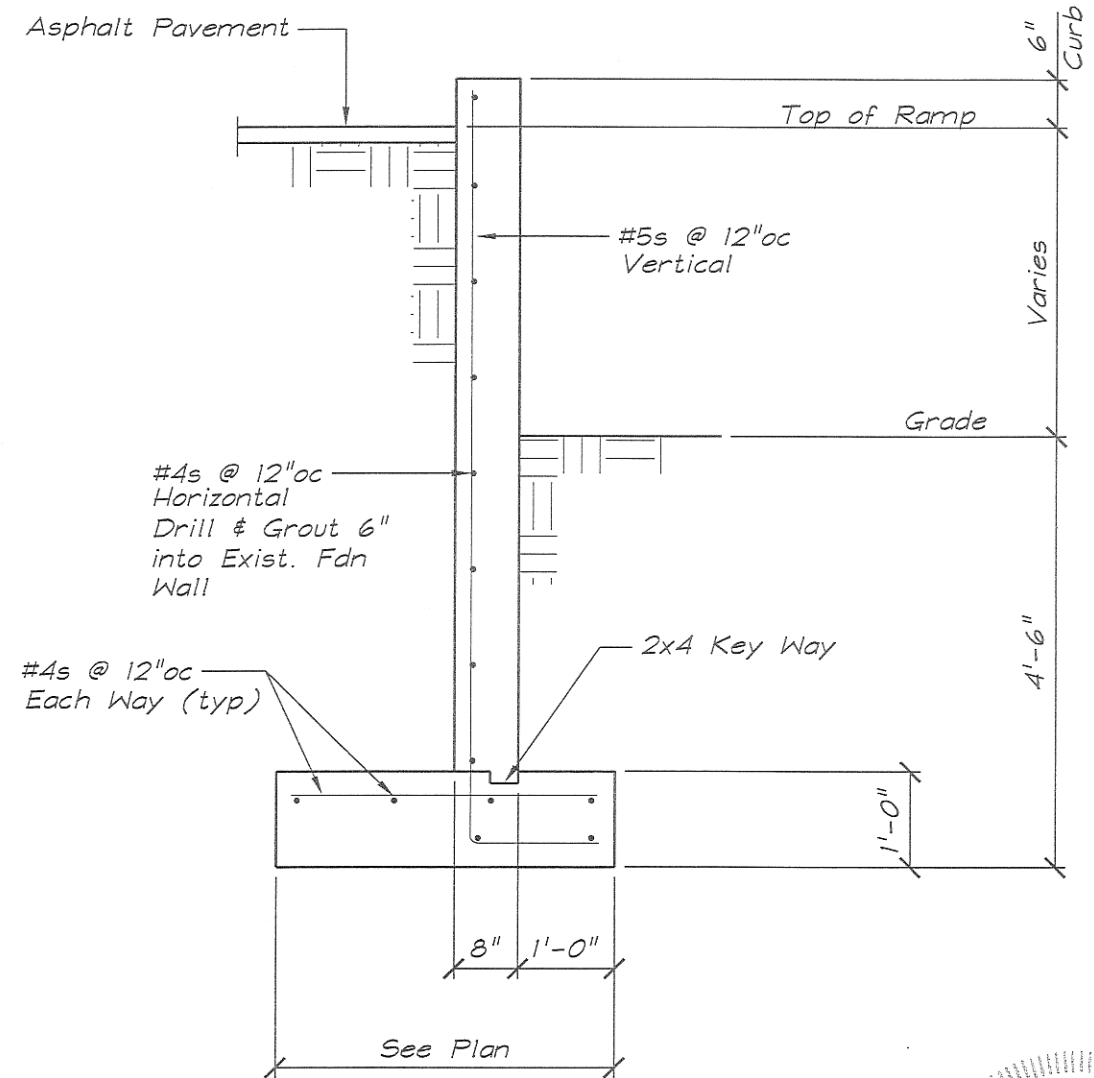
Scale: 1/8" = 1'-0"



SECTION 1

Scale: 1/8" = 1'-0"

1
S1



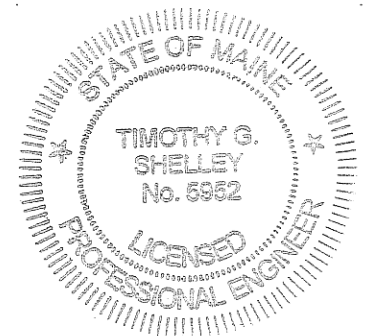
SECTION 2

Scale: 1/2" = 1'-0"

2
S1

CONCRETE NOTES:

1. ALL CONCRETE WORK SHALL CONFORM TO ACI-318-LATEST EDITION.
2. CONCRETE COMPRESSIVE STRENGTH AT 28 DAYS SHALL BE 3000 PSI, MAXIMUM SIZE AGGREGATE SHALL BE 3/4".



SEI SHELLEY ENGINEERING, INC. STRUCTURAL CONSULTANTS P.O. Box 1030 GRAY, MAINE 04039 PHONE (207) 657-8031 WWW.SHELLEYENGINEERING.COM	11 DIAMOND ST. New Delivery Ramp		
	PORTLAND		ME
	DRAWN BY: TGS	DATE: 5/24/13	SKETCH: S1 of 1
	DESIGNED BY: TGS	SCALE: AS NOTED	JOB No.: 2013-083