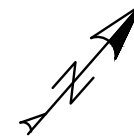


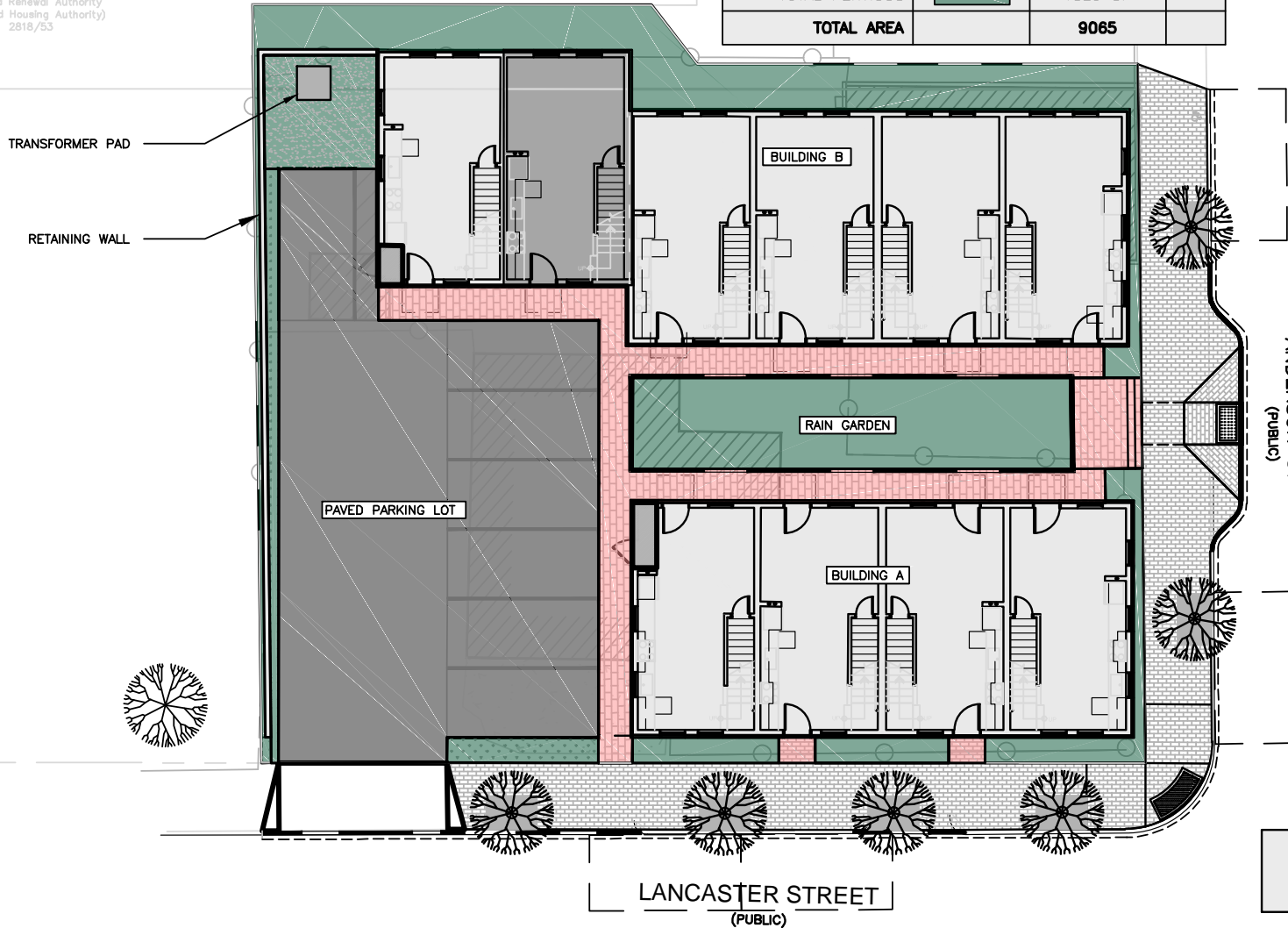
GENERAL NOTES:

1. IMPERVIOUS SURFACES AS DEFINED BY CITY OF PORTLAND CODE OF ORDINANCES SECTION 14-47.

SURFACE SUMMARY			
	HATCH	AREA	
BUILDINGS		4100 SF	
PAVEMENT		2153 SF	
BRICK SIDEWALK		903 SF	
RETAINING WALL		64 SF	
TRANSFORMER PAD		16 SF	
<b>TOTAL IMPERVIOUS</b>		<b>7236 SF</b>	<b>80%</b>
<b>TOTAL LOT COVERAGE</b>		<b>4100</b>	<b>45%</b>
<b>TOTAL PERVIOUS</b>		<b>1829 SF</b>	<b>20%</b>
<b>TOTAL AREA</b>		<b>9065</b>	



N/F  
Land Renewal Authority  
(and Housing Authority)  
2818/53



ISSUED FOR  
FINAL APP  
BY DATE  
WHS  
8/22/18

DRAWING NAME:  
IMPERVIOUS SURFACE EXHIBIT  
PROJECT NAME:  
70 ANDERSON STREET  
REDEVELOPMENT  
CLIENT:  
REDFERN PROPERTIES, LLC  
PORTLAND, ME 04104

**ACORN ENGINEERING, INC.**  
ACORN ENGINEERING, INC. P.O. BOX 3372  
PORTLAND, MAINE 04104 (207) 775-2655

FILE: CIVIL 1067  
JN: 1067  
SCALE: 1"=20'  
DESIGN BY: OJD  
DRAWN BY: OJD  
CHECKED BY: WHS

THIS PLAN SHALL NOT BE MODIFIED WITHOUT WRITTEN PERMISSION FROM ACORN ENGINEERING, INC. ANY ALTERATIONS, AUTHORIZED OR OTHERWISE, SHALL BE AT THE USER'S SOLE RISK AND WITHOUT LIABILITY TO ACORN ENGINEERING, INC.

DRAWING NO.

**SK-10**

FINAL APPLICATION  
NOT ISSUED FOR  
CONSTRUCTION