

GENERAL NOTES:

- STORMWATER DRAINAGE INFRASTRUCTURE INDICATED ON SHEET C-30.
- LOCATION OF PROPOSED CONNECTIONS APPROXIMATE. CONTRACTOR TO CONTACT ENGINEER IF FIELD INFORMATION VARIES FROM INFORMATION ON PLANS.
- CONTRACTOR IS TO BE CAUTIONED THAT CERTAIN LOCATIONS AND/OR ELEVATIONS OF EXISTING UTILITIES HAVE BEEN PROVIDED THROUGH UTILITY COORDINATION OR OTHER OBSERVATIONS. INFORMATION IS NOT TO BE RELIED UPON AS EXACT OR COMPLETE. CONTRACTOR TO FIELD VERIFY AND COORDINATE WITH UTILITY COMPANY AND DIG SAFE NO LESS THAN 72 HOURS PRIOR TO ANY EXCAVATION TO REQUEST EXACT FIELD LOCATION OF ALL UTILITIES. IT SHALL BE THE RESPONSIBILITY OF THE CONTRACTOR TO RELOCATE ALL EXISTING UTILITIES WHICH CONFLICT WITH THE PROPOSED IMPROVEMENTS INDICATED IN THE CONTRACT DOCUMENTS. CONTRACTOR TO NOTIFY ENGINEER OF ANY DIFFERENTIATIONS FROM EXISTING CONDITIONS, INCLUDING UTILITY SURVEY, PRIOR TO ANY CHANGES.
- FOR ALL UTILITIES, ACORN ENGINEERING DESIGN LIMITS EXTEND TO OUTSIDE WALL OF BUILDING. METERING OF UTILITIES TO BE COMPLETED BY M.E.P. UNLESS SPECIFIED OTHERWISE.
- SEWER: SEWER UTILITIES TO BE CONSTRUCTED IN ACCORDANCE WITH CITY OF PORTLAND TECHNICAL STANDARDS. VALVE FOR BACKFLOW PREVENTION SHALL BE INSTALLED WITHIN THE PROPERTY LINES FOR EACH CITY SEWER CONNECTION. IF THE EXISTING 24" VC SEWER MAIN IN ANDERSON STREET CONTINUES PAST THE PROPERTY AS DETERMINED DURING TEST PITTING, CONTRACTOR TO CONNECT TO EITHER SEWER MAIN; CONTRACTOR TO CONTACT ENGINEER BEFORE CONNECTING TO SEWER MAIN. CONTRACTOR TO CONTACT ENGINEER IF FIELD CONDITIONS FROM INVERT VARY FROM DESIGN.
- WATER UTILITIES: FINAL PIPE SIZING PROVIDED BY MEP ENGINEER AND FIRE PROTECTION DESIGNER. INTERNAL METERING, BACKFLOW PREVENTION, AND PRESSURE REDUCERS TO BE COMPLETED BY M.E.P. ENGINEER. DOMESTIC WATER PIPE SIZES WILL DETERMINE THE FINAL WATER METERING OPTIONS. METER MAY BE SMALLER THAN PROPOSED WATER MAIN. WATER METERING, PRESSURE REDUCER AND BACKFLOW PREVENTION TO BE IN ACCORDANCE WITH THE PORTLAND WATER DISTRICT STANDARDS. CONTRACTOR TO FOLLOW METERING GUIDELINES OF THE PORTLAND WATER DISTRICT AND CITY OF PORTLAND.
- ELECTRIC UTILITIES: ELECTRIC DESIGN TO BE FINALIZED BY M.E.P. ENGINEER. ELECTRICAL LOAD TO BE DETERMINED BY M.E.P. ENGINEER. METER LOCATION BY M.E.P. ALL ELECTRIC CONSTRUCTION SHALL CONFORM TO CMP GUIDEBOOK OF STANDARD REQUIREMENTS, MOST RECENT EDITION. TELEPHONE AND CABLE SERVICE TO BYPASS CMP TRANSFORMER; M.E.P. TO FINALIZE SERVICE CONNECTION LOCATION.
- GAS UTILITIES: NO GAS SERVICE IS PROPOSED TO THE SITE.
- CABLE AND TELEPHONE PULLBOXES AND PEDESTAL LOCATIONS TO BE DETERMINED BY FAIRPOINT AND CHARTER COMMUNICATIONS PRIOR TO CONSTRUCTION. CONTRACTOR TO COORDINATE.
- CONTRACTOR TO COORDINATE WITH ARCHITECT ON FINAL UTILITY CONNECTION LOCATION TO EACH RESIDENTIAL UNIT.
- IF THE MINIMUM HORIZONTAL SEPARATION BETWEEN THE SANITARY SEWER LATERAL AND DOMESTIC WATER SERVICE LINES CANNOT BE ACHIEVED, THEN A MINIMUM OF 18" VERTICAL AND HORIZONTAL SEPARATION IS TO BE MET. ARCHITECT AND M.E.P. TO FINALIZE FINAL SERVICE CONNECTION LOCATIONS.

STRUCTURE SCHEDULE				
STRUCTURE	INTERIOR DIAMETER	RIM	INV. IN	INV. OUT
EX. SMH-1	-	16.76'	9.7' (12" PVC) 10.4' (24" VC)	9.7' (24" VC)
EX. SMH-2	-	20.76'	14.0' (12" PVC)	14.0' (12" PVC)

* EXISTING STRUCTURES AS DEFINED BY THE EXISTING CONDITIONS SURVEY DATED MAY 2ND, 2016 BY TITCOMB ASSOCIATES

MINIMUM HORIZONTAL UTILITY SEPARATION					
UTILITY	UGE/T/C	WATER	SEWER	GAS	STORMWATER
UGE/T/C	-	6'	5'	4'	6'
WATER	6'	-	5'	4'	3'
SEWER	5'	5'	-	5'	10'
GAS	4'	6'	5'	-	6'
STORMWATER	6'	3'	10'	6'	-

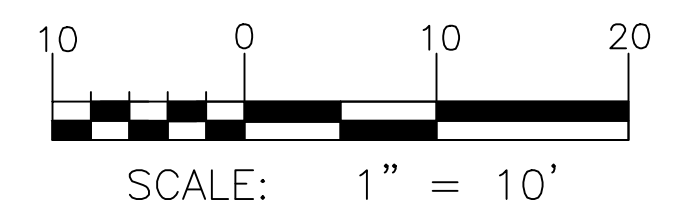
N/F
Portland Renewal Authority
(Portland Housing Authority)
2528/295

N/F
Portland Renewal Authority
(Portland Housing Authority)
2818/53

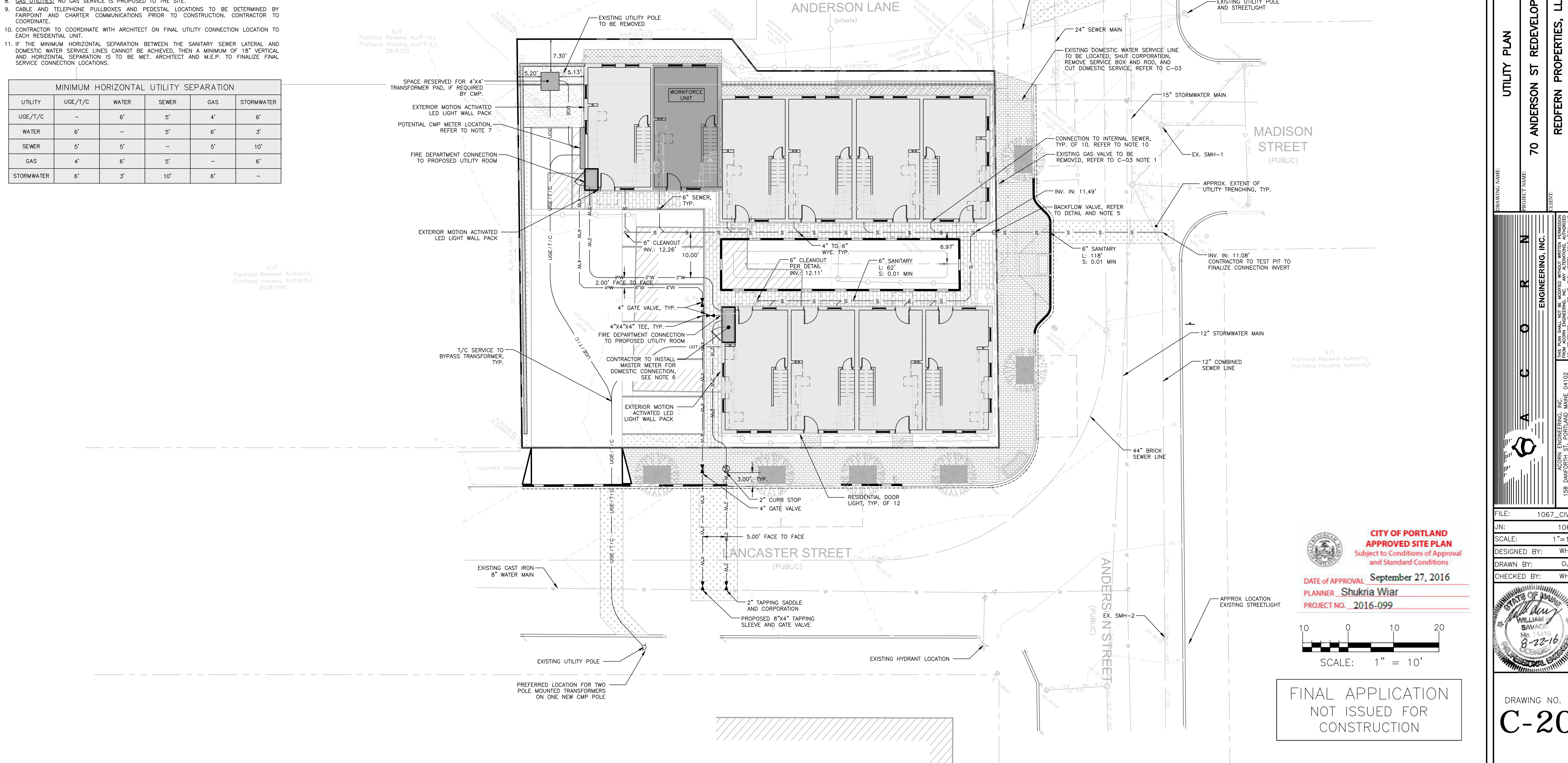
N/F
Portland Renewal Authority
(Portland Housing Authority)
2528/295

CITY OF PORTLAND
APPROVED SITE PLAN
Subject to Conditions of Approval
and Standard Conditions

DATE OF APPROVAL **September 27, 2016**
PLANNER **Shukria Wiar**
PROJECT NO. **2016-099**



FINAL APPLICATION
NOT ISSUED FOR
CONSTRUCTION



ISSUED FOR	BY	DATE
PRELIMINARY APP	WHS	4/29/16
PWD REVIEW	WHS	5/27/16
FINAL APP	WHS	8/22/16

DRAWING NAME: **UTILITY PLAN**
PROJECT NAME: **70 ANDERSON ST REDEVELOPMENT**
CLIENT: **REDFERN PROPERTIES, LLC**
P.O. BOX 8816 PORTLAND, ME 04104

ACORN ENGINEERING, INC.
158 BANCROFT ST. PORTLAND, MAINE 04102
(207) 775-2655

FILE: 1067_CIVIL
JN: 1067
SCALE: 1"=10'
DESIGNED BY: WHS
DRAWN BY: OJD
CHECKED BY: WHS

DRAWING NO. **C-20**