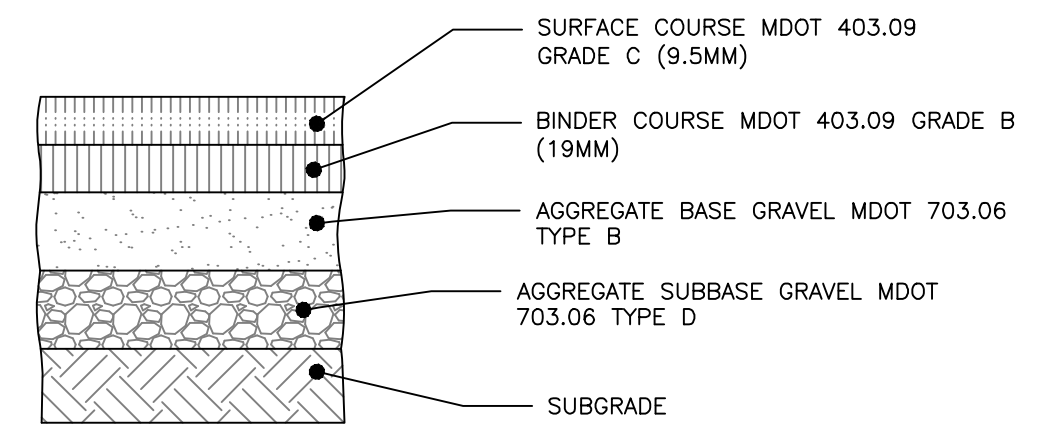


BRICK SIDEWALK WITH BITUMINOUS BASE DETAIL
NOT TO SCALE

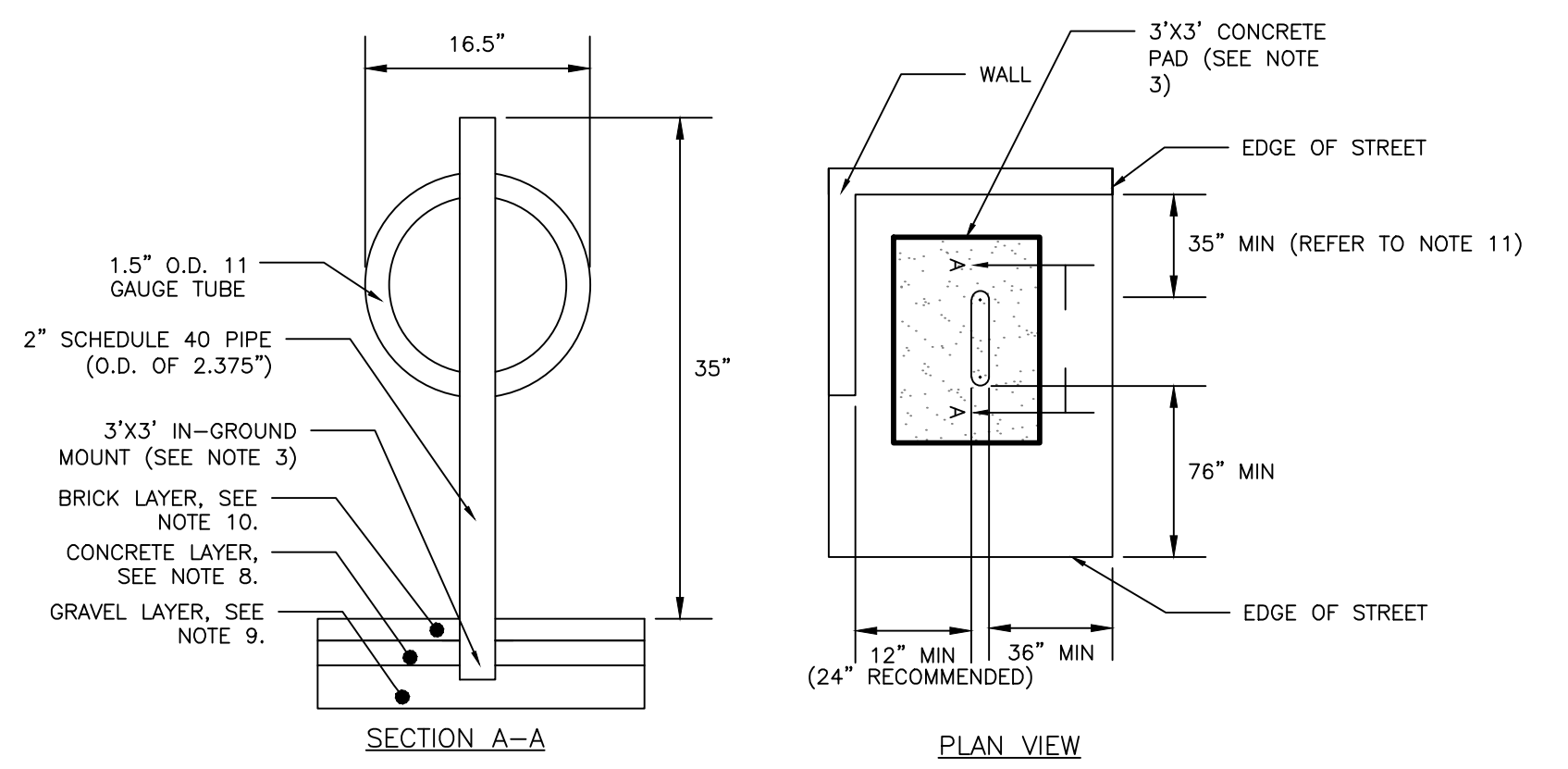


- NOTES:**
1. COMPACT SUBGRADE TO 95% MAXIMUM DRY DENSITY IN ACCORDANCE WITH ASTM D-1557
 2. LOCAL BITUMINOUS PAVEMENT PROFILE APPLIES TO THE SITE DRIVEWAY & WATERVILLE STREET

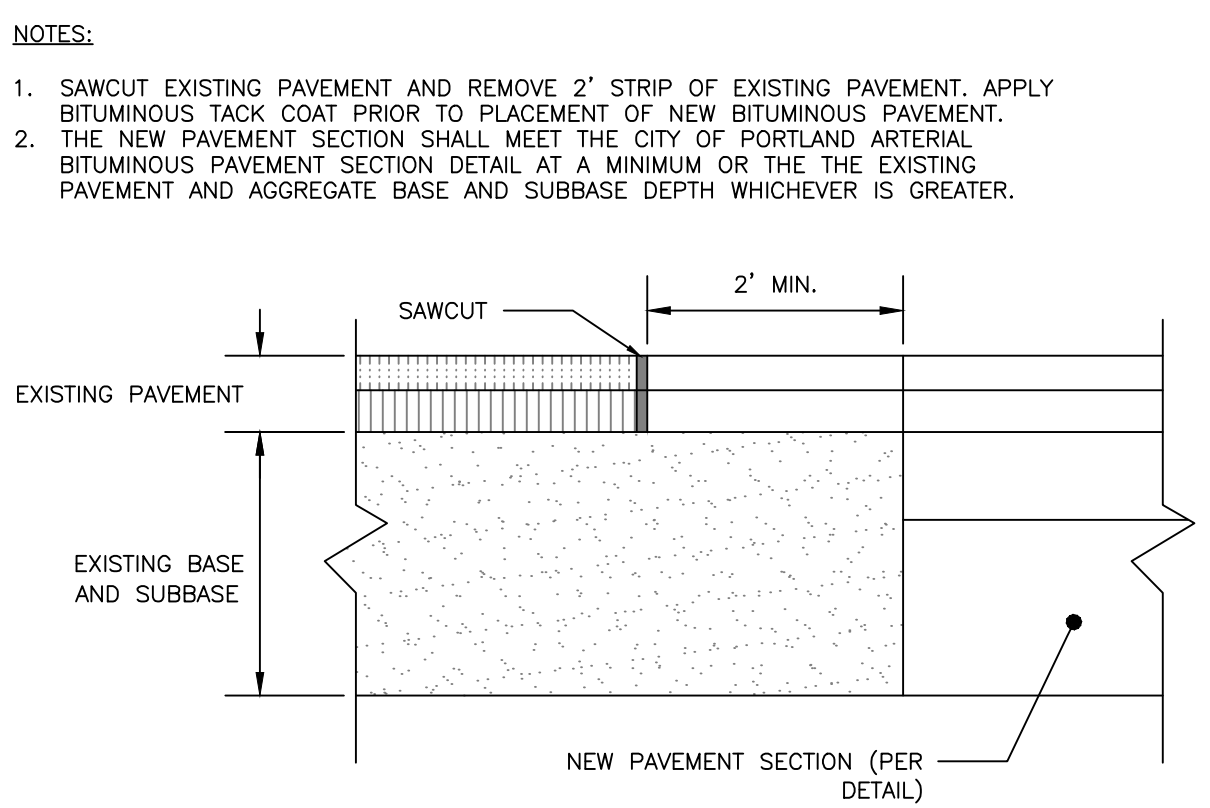
THICKNESS OF LAYERS	
STANDARD	LAYERS
1-1/2"	SURFACE COURSE MDOT 403.09 GRADE C (9.5mm)
2"	BINDER COURSE MDOT 403.09 GRADE B (19mm)
3"	AGGREGATE BASE GRAVEL MDOT 703.06 TYPE B
15"	AGGREGATE SUBBASE GRAVEL MDOT 703.06 TYPE D

LOCAL BITUMINOUS PAVEMENT PROFILE: EAST LANCASTER STREET
NOT TO SCALE

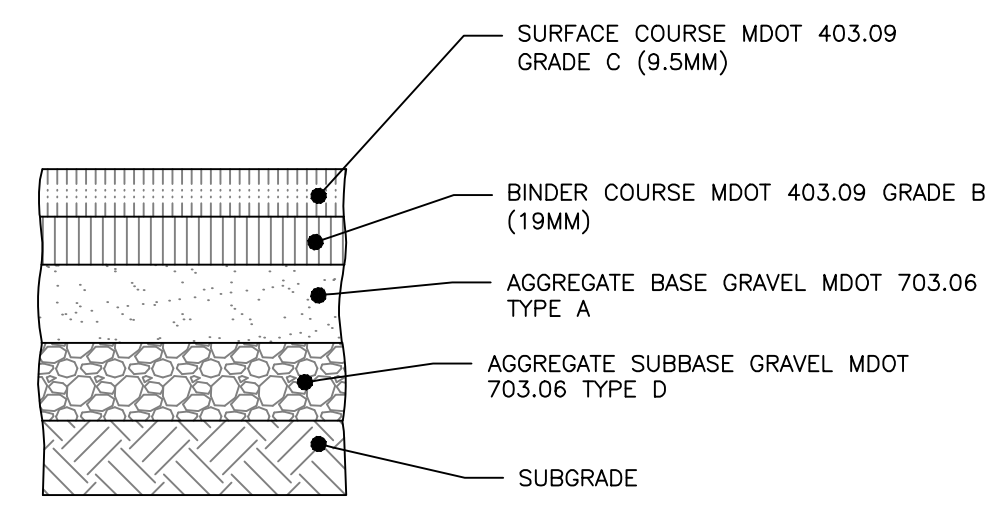
- NOTES:**
1. BICYCLE RACK SHALL HAVE CAPACITY FOR TWO BICYCLES.
 2. BICYCLE RACK PARTS SHALL BE OF UNIFORM COLOR AND SHALL BE FINISHED IN ACCORDANCE WITH PRODUCT SPECIFICATION.
 3. BICYCLE RACK SHALL BE INSTALLED IN ACCORDANCE WITH MANUFACTURER'S MOST RECENT INSTALLATION RECOMMENDATIONS, AND SHALL BE INSTALLED WITH AN IN-GROUND MOUNT UNLESS OTHERWISE APPROVED BY ENGINEER.
 4. BICYCLE RACK SHALL BE "DERO BIKE HITCH", AS MANUFACTURED BY DERO BIKE RACKS.
 5. MINIMUM OFFSETS SHOWN, MANUFACTURER'S RECOMMENDED OFFSETS SHALL BE ENFORCED WHERE POSSIBLE.
 6. MINIMUM DISTANCE BETWEEN BICYCLE RACKS SHALL BE 24". RECOMMENDED DISTANCE BETWEEN BICYCLE RACKS SHALL BE 38".
 7. ALL OFFSETS ARE FROM OUTSIDE EDGES OF ITEMS.
 8. CONCRETE SHALL BE 4000 PSI @28 DAYS. BOTTOM OF CONCRETE SHALL BE AT TOP OF SIDEWALK GRAVEL ELEVATION. DEPTH VARIES APPROX. 4"-7".
 9. GRAVEL LAYER SHALL BE INSTALLED IN ACCORDANCE WITH BRICK SIDEWALK WITH BITUMINOUS BASE DETAIL, AND SHALL BE MANDOT 703.06 TYPE B.
 10. TOP OF BRICK LAYER SHALL BE AT SAME ELEVATION IN ACCORDANCE WITH BRICK SIDEWALK DETAIL.
 11. 54" MIN DISTANCE BETWEEN EDGE OF STREET AND BICYCLE HITCH IF AISLE IS REQUIRED.



BICYCLE HITCH DETAIL
NOT TO SCALE



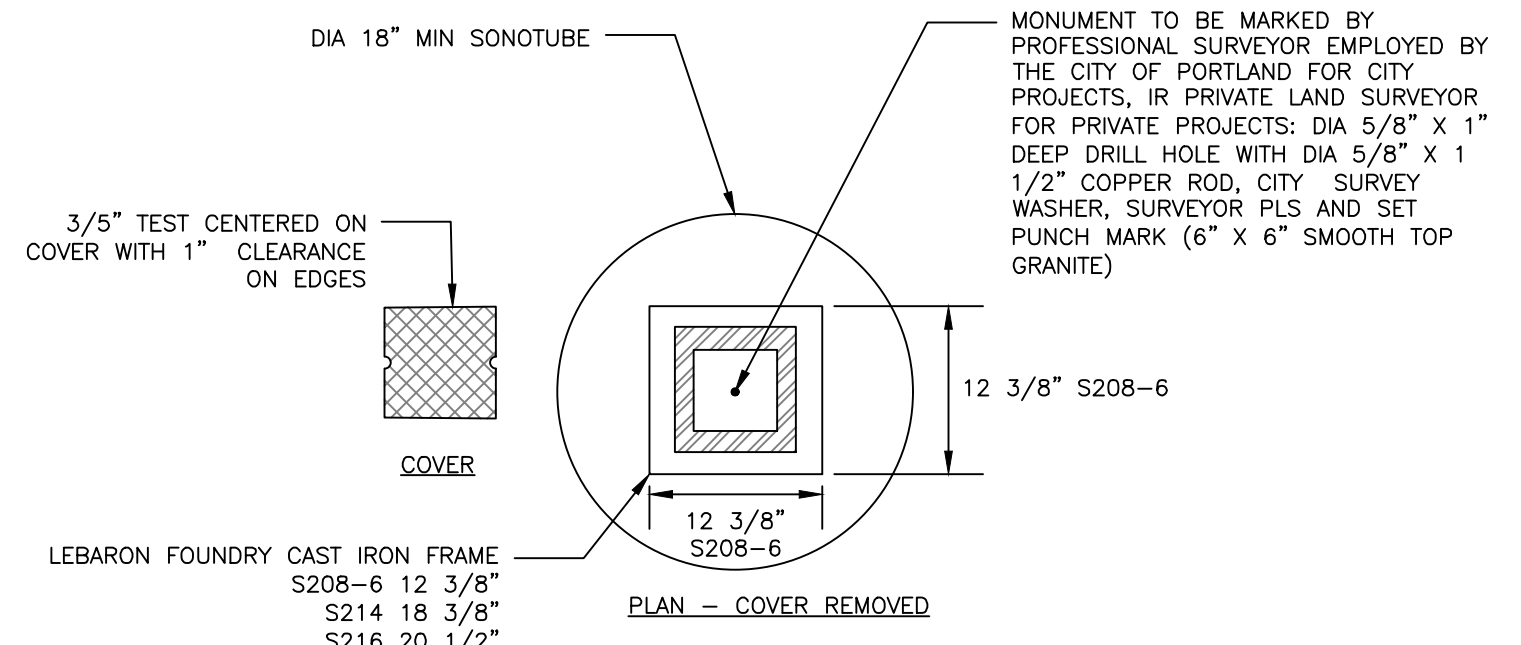
PAVEMENT SAWCUT DETAIL
NOT TO SCALE



- NOTES:**
1. COMPACT SUBGRADE TO 95% MAXIMUM DRY DENSITY IN ACCORDANCE WITH ASTM D-1557.
 2. ARTERIAL BITUMINOUS PAVEMENT PROFILE APPLIES ONLY WITHIN FORE STREET R.O.W.

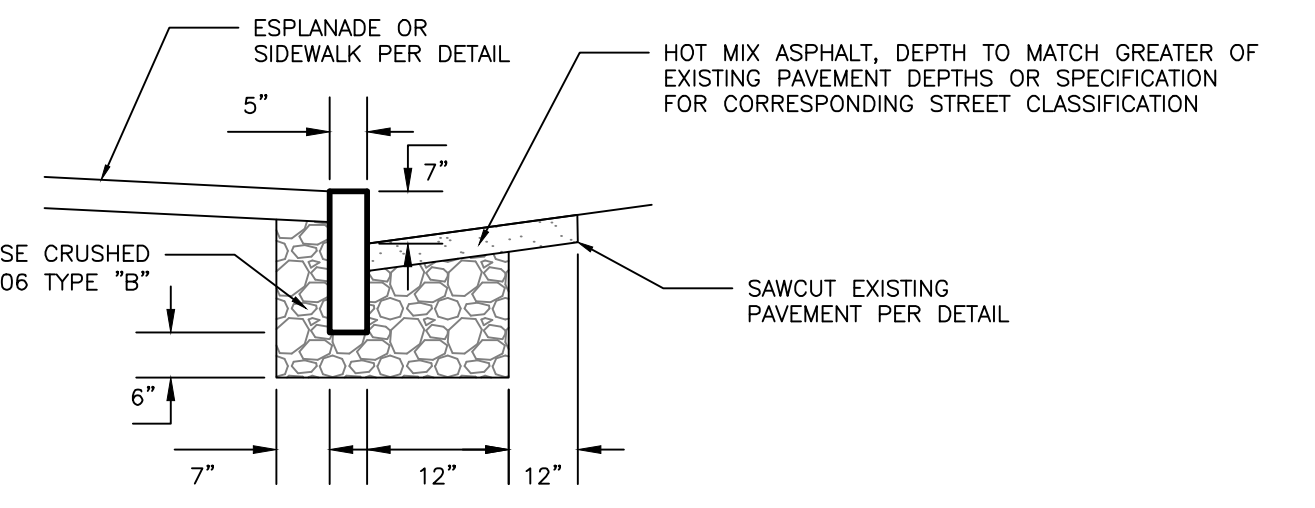
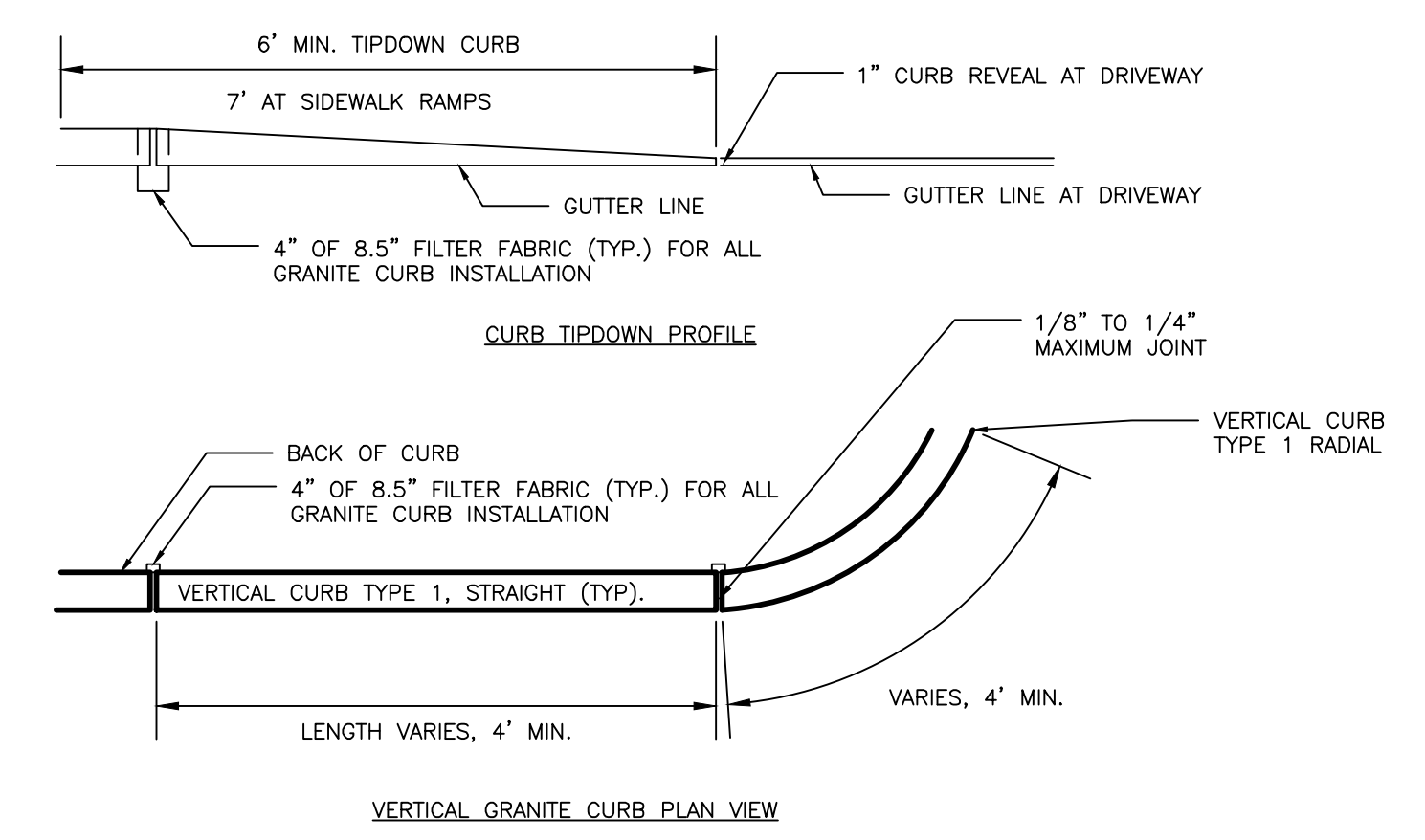
THICKNESS OF LAYERS	
STANDARD	LAYERS
2"	SURFACE COURSE MDOT 403.09 GRADE C (12.5mm)
3"	BINDER COURSE MDOT 403.09 GRADE B (19mm)
6"	AGGREGATE BASE GRAVEL MDOT 703.06 TYPE B
18"	AGGREGATE SUBBASE GRAVEL MDOT 703.06 TYPE D

CITY OF PORTLAND ARTERIAL BITUMINOUS PAVEMENT PROFILE: ANDERSON STREET
NOT TO SCALE

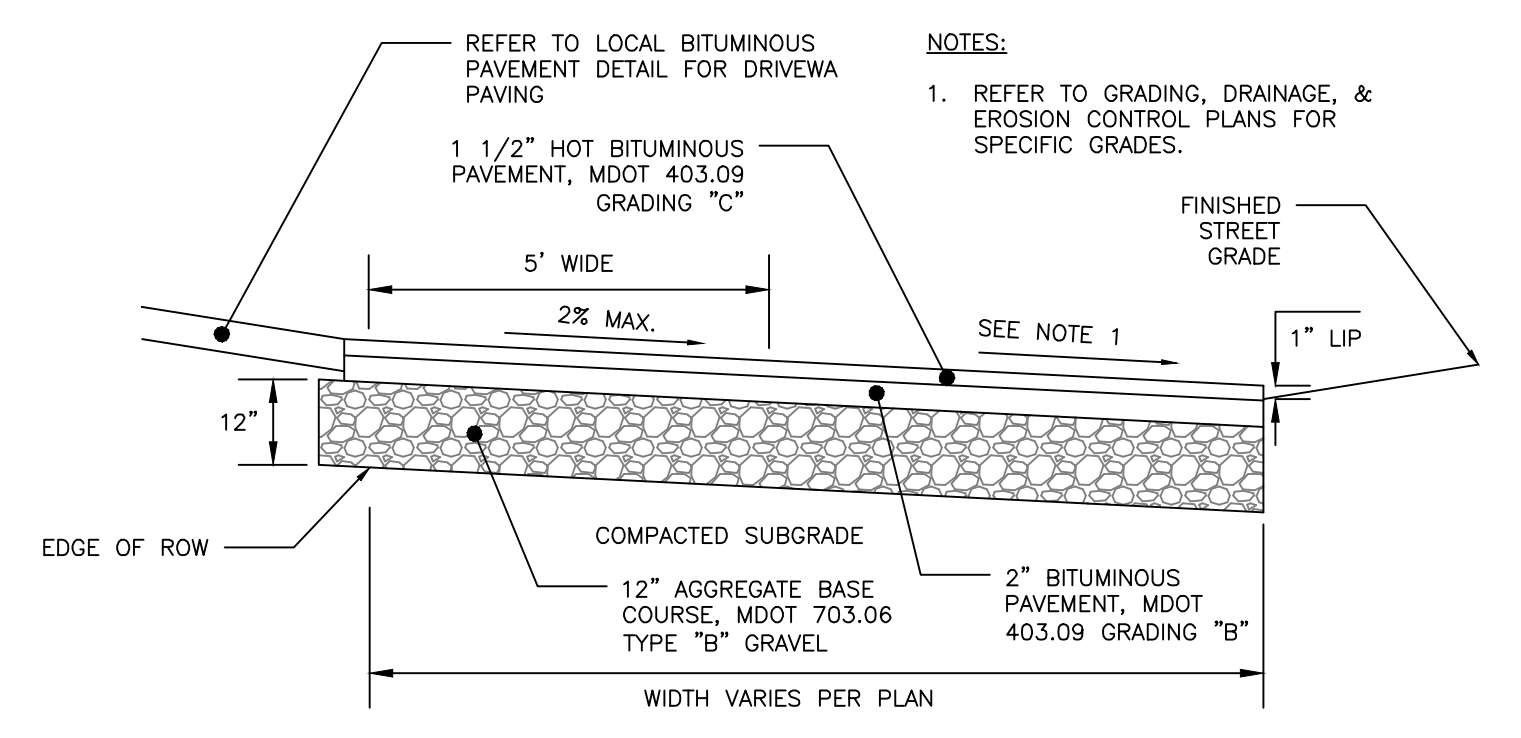


- NOTES:**
1. ALL MONUMENTS SHALL BE HARD AND DURABLE GRANITE, OF LIGHT COLOR, WITH A SMOOTH SPLIT APPEARANCE AND FREE FROM SEAMS WHICH IMPAIR STRUCTURAL INTEGRITY.
 2. ALL MONUMENTS, EXCEPT FOR IN DESIGNATED AREAS, MAY HAVE SPLIT OR SAWN SIDES. THE BOTTOM SURFACE SHALL BE 7" TO 9" SQUARE, MAY BE CUT ROUGH, AND SHALL BE PARALLEL WITH THE TOP SURFACE. THE TOP SURFACE SHALL BE SMOOTH, NOT PREMARKED, 6" SQUARE, AND MARKED BY A MAINE PROFESSIONAL LAND SURVEYOR AFTER BACKFILL AND COMPACTION.
 3. ALL MONUMENTS SHALL BE A FULL 5'-3" IN LENGTH PLUS OR MINUS ONE INCH, UNLESS THE CITY HAS PREAPPROVED AN ALTERNATIVE.
 4. THE CONTRACTOR SHALL SET THE CENTER OF THE MONUMENT WITHIN 1" OF THE SURVEY POINT, OR THE CONTRACTOR SHALL BE RESPONSIBLE FOR REMOVING IT AND SETTING ANOTHER MONUMENT.

GRANITE STREET MONUMENT
NOT TO SCALE

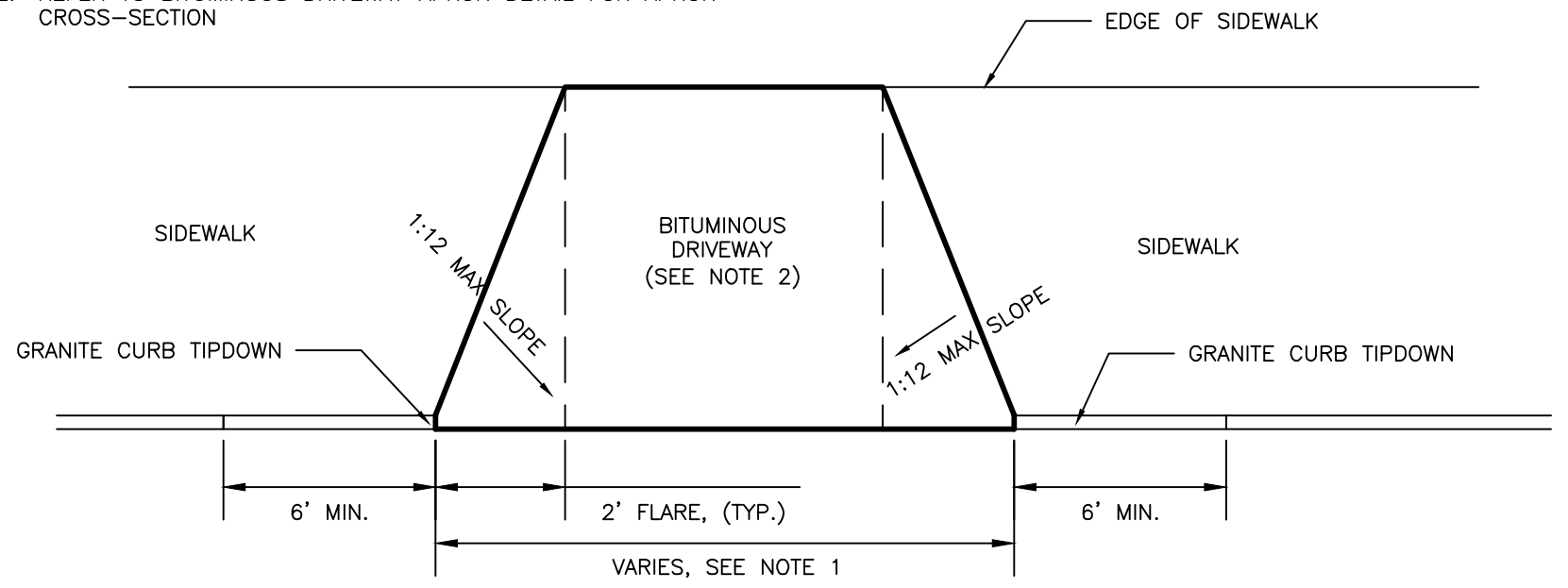


VERTICAL GRANITE CURB AND TIPDOWN INSTALLATION
NOT TO SCALE



BITUMINOUS DRIVEWAY APRON DETAIL
NOT TO SCALE

- NOTES:**
1. REFER TO GRADING, DRAINAGE AND EROSION CONTROL PLANS FOR SITE GRADING.
 2. REFER TO BITUMINOUS DRIVEWAY APRON DETAIL FOR APRON CROSS-SECTION



DRIVEWAY APRON LAYOUT DETAIL
NOT TO SCALE

PRELIMINARY
NOT ISSUED FOR
CONSTRUCTION

ISSUED FOR	BY
PRELIMINARY APP	WHS
	DATE
	4/25/14
REVISION	REV. DATE
DRAWING NAME: SITE DETAILS - 1	
PROJECT NAME: 70 ANDERSON STREET REDEVELOPMENT	
CLIENT: REDFERN PROPERTIES, LLC	
P.O. BOX 8816 PORTLAND, ME 04104	
DRAWING NUMBER: 11-ACORN-ENR-1067	
SCALE: NTS	
DESIGNED BY: WHS	
DRAWN BY: OJD	
CHECKED BY: WHS	
FILE: CIVIL_1067	
JN: 1067	
SCALE: NTS	
DESIGNED BY: WHS	
DRAWN BY: OJD	
CHECKED BY: WHS	
DRAWING NO. C-40	