



SUBMITTAL DATA

For: Approval

Order #:

Date: 10/04/2017

Project: Rising Tide

Project #:

Location:

Date

10/04/2017

Project Name

Rising Tide

Project Number**Client / Purchaser**

Submittal Summary Page

Qty	Tag #	Model #	Description
1		ZE060H12B2A1AAA1A1	5 Ton, York Small Sunline Single Packaged R-410A Air Conditioner, Single Stage Cooling, 11.8 EER / 14.0 SEER, 125 MBH Input, Single Stage Gas Aluminum Steel, 208/230-3-60 <ul style="list-style-type: none"> • 1.5 HP Standard Static Belt Drive Blower • 1" Throwaway Filters • Simplicity® SE Controller including Discharge Air, Return Air, and Outdoor Air Temperature Sensors • Microchannel All Aluminum Condenser Coil, Copper tube/Aluminum fin Evaporator Coil • Galvanized Steel Drain Pan • Standard Access Doors
1		1RC0434	Roof Curb - 14" High, Flat, Uninsulated, Full Perimeter (Shipped Knocked Down)
1		2EE04709024	Dry Bulb Low Leak Economizer (Hood Kit included for field assembly and installation)
1		1RD0410	Barometric Relief Damper with Hood Kit (Downflow Unit or Duct Mounted)
1		ZF090N18D2A1AAA1A1	7.5 Ton, Single Packaged R-410A Air Conditioner, Standard Efficiency, Two Stage Cooling, 11.0 EER / 12.2 IEER (CV) / 12.7 IEER (IntelliSpeed) / 12.2 IEER (VAV), 180 MBH Input Aluminized Steel, Two Stage Gas Heat, 208/230-3-60 <ul style="list-style-type: none"> • 3 HP High Static Belt Drive Blower • Standard 2" Throwaway Filters • Simplicity® SE Controller including Discharge Air, Return Air, and Outdoor Air Temperature Sensors • Micro-Channel "all-aluminum" condenser coil, Copper tube/aluminum fin evaporator coil • Composite Drain Pan - Front Connection
1		1RC0471	Roof Curb - 14" High, Flat, Uninsulated, Full Perimeter (Shipped Knocked Down)
1		2EE04707424	Economizer for Downflow, End Return Horizontal, or ERV Applications. Includes FA Hood, Exhaust Hood w/Baro Relief
1		2SD04701024	Smoke Detector Kit w/ Mounting Hardware for Supply (Horizontal/Downflow) and Return Air (Downflow Only)

Equipment start-up and commissioning by a factory trained technician is recommended.
Contact your supplying distributor or sales representative for additional information & guidance.

Project Name: **Rising Tide**

Unit Model #: **ZE060H12B2A1AAA1A1**

Quantity: **1**

System: **ZE060H12B2A1AAA1A1**

Cooling Performance

Total gross capacity	61.1 MBH
Sensible gross capacity	45.4 MBH
Total net capacity	57.3 MBH
Sensible net capacity	41.6 MBH
Seasonal Efficiency (at ARI)	14.00 SEER
Efficiency (at ARI)	11.80 EER
Ambient DB temp.	95.0 °F
Entering DB temp.	80.0 °F
Entering WB temp.	67.0 °F
Leaving DB temp.	59.0 °F
Leaving WB temp.	57.3 °F
Power input (w/o blower)	4.28 kW
Sound power	82 dB(A)

Refrigerant

Refrigerant type	R-410A
Sys1	6 lbs 6 oz

Gas Heating Performance

Entering DB temp.	60 °F
Heating output capacity (Max)	100 MBH
Supply air	2000 CFM
Heating input capacity (Max)	125 MBH
Leaving DB temp.	106.3 °F
Air temp. rise	46.3 °F
SSE	80.0 %
Stages	1

Supply Air Blower Performance

Supply air	2000 CFM
Ext. static pressure	0.6 IWG
Addl. Unit Losses (Options/Accessories)	0.15 IWG
Blower speed	1151 RPM
Max BHP of Motor (including service factor)	1.73 HP
Duct location	Bottom
Motor rating	1.50 HP
Actual required BHP	1.19 HP
Power input	1.11 kW
Elevation	0 ft.
Drive type	BELT

Electrical Data

Power supply	230-3-60
Unit min circuit ampacity	28.7 Amps
Unit max over-current protection	35 Amps

Dimensions & Weight

Hgt	33 in.	Len	83 in.	Wth	45 in.
Weight with factory installed options	712 lbs.				

Clearances

Right	24 in.	Front	32 in.	Back	36 in.
Top	72 in.	Bottom	0 in.	Left	36 in.

Note: Please refer to the tech guide for listed maximum static pressures



5 Ton

- York Units are Manufactured at an ISO 9001 Registered Facility and Each Rooftop is Completely Computer-Run Tested Prior to Shipment.

Unit Features

- Single Stage Cooling
- Single Stage Gas Aluminum Steel
- Single Stage Cooling
- 125 MBH Input
- Unit Cabinet Constructed of Powder Painted Steel, Certified At 1000 Hours Salt Spray Test (ASTM B-117 Standards)
- Full Perimeter Base Rails with Built in Rigging Capabilities
- Either Supply and/or Return can be Field Converted from Vertical to Horizontal Configuration without Cutting Panels.
- Scroll Compressor
- 1.5 HP Standard Static Belt Drive Blower
- Unit Ships with 1" Throwaway Filters
- Solid Core Liquid Line Filter Driers
- Replacement Filters: 2 - (15" x 20" x 1" or 2") and 1 - (14" x 25" x 1" or 2"). Unit accepts 1" or 2" wide filters.
- Short Circuit Current: 5kA RMS Symmetrical
- Single Point Power Connection
- Through-the-Curb and Through-The-Base Utility Connections
- Microchannel All Aluminum Condenser Coil, Copper tube/Aluminum fin Evaporator Coil
- Galvanized Steel Drain Pan
- Standard Access Doors

Standard Unit Controller: Simplicity Control Board

- An Integrated Low-Ambient Control, Anti-Short Cycle Protection, Lead-Lag, Fan On and Fan off Delays, Low Voltage Protection, On-Board Diagnostic and Fault Code Display. Allows all units to operate in the cooling mode down to 0 °F outdoor ambient without additional components or intervention.
- Safety Monitoring - Monitors the High and Low-Pressure Switches, the Freezestats, the Gas Valve, if Applicable, and the Temperature Limit Switch on Gas and Electric Heat Units. The Unit Control Board will Alarm on Ignition Failures, Safety Lockouts and Repeated Limit Switch Trips.

BAS Controller

- Simplicity SE Controller including Discharge Air, Return Air, and Outdoor Air Temperature Sensors

Warranty

- One (1) Year Limited Warranty on the Complete Unit
- Five (5) Year Warranty - Compressors and Electric Heater Elements
- Ten (10) Year Warranty - Aluminized Heat Exchanger



Small Sunline (3-6 Ton Package) N543

Single Package R-410A Air Conditioner

Project Name: **Rising Tide**

Unit Model #: **ZE060H12B2A1AAA1A1**

Quantity: **1**

System: **ZE060H12B2A1AAA1A1**

Factory Installed Options

ZE060H12B2A1AAA1A1

Product Category:	ZE	York Small Sunline Single Packaged R-410A Air Conditioner 11.8 EER / 14.0 SEER
Nominal Cooling Capacity:	060	5 Ton Single Stage Cooling
Heat Type and Nominal Heat Capacity:	H12	Single Stage Gas Aluminum Steel 125 MBH Input
Blower Option:	B	1.5 HP Standard Static Belt Drive Blower
Voltage:	2	208/230-3-60
Economizer / Damper:	A	
Service Options:	1	
Sensor Options:	A	
Controls:	A	Simplicity® SE Controller including Discharge Air, Return Air, and Outdoor Air Temperature Sensors
Refrigeration:	A	Microchannel All Aluminum Condenser Coil, Copper tube/Aluminum fin Evaporator Coil
Additional Options:	1	1" Throwaway Filters
Cabinet Options:	A	Galvanized Steel Drain Pan Standard Access Doors
Product Generation:	1	

Field Installed Accessories

- 1RC0434 - Roof Curb - 14" High, Flat, Uninsulated, Full Perimeter (Shipped Knocked Down) (86.0 lbs)
- 2EE04709024 - Dry Bulb Low Leak Economizer (Hood Kit included for field assembly and installation) (50.0 lbs)
- 1RD0410 - Barometric Relief Damper with Hood Kit (Downflow Unit or Duct Mounted) (6.0 lbs)

Project Name: **Rising Tide**

 Unit Model #: **ZE060H12B2A1AAA1A1**

 Quantity: **1**

 System: **ZE060H12B2A1AAA1A1**
Consolidated Drawing
NOTES:

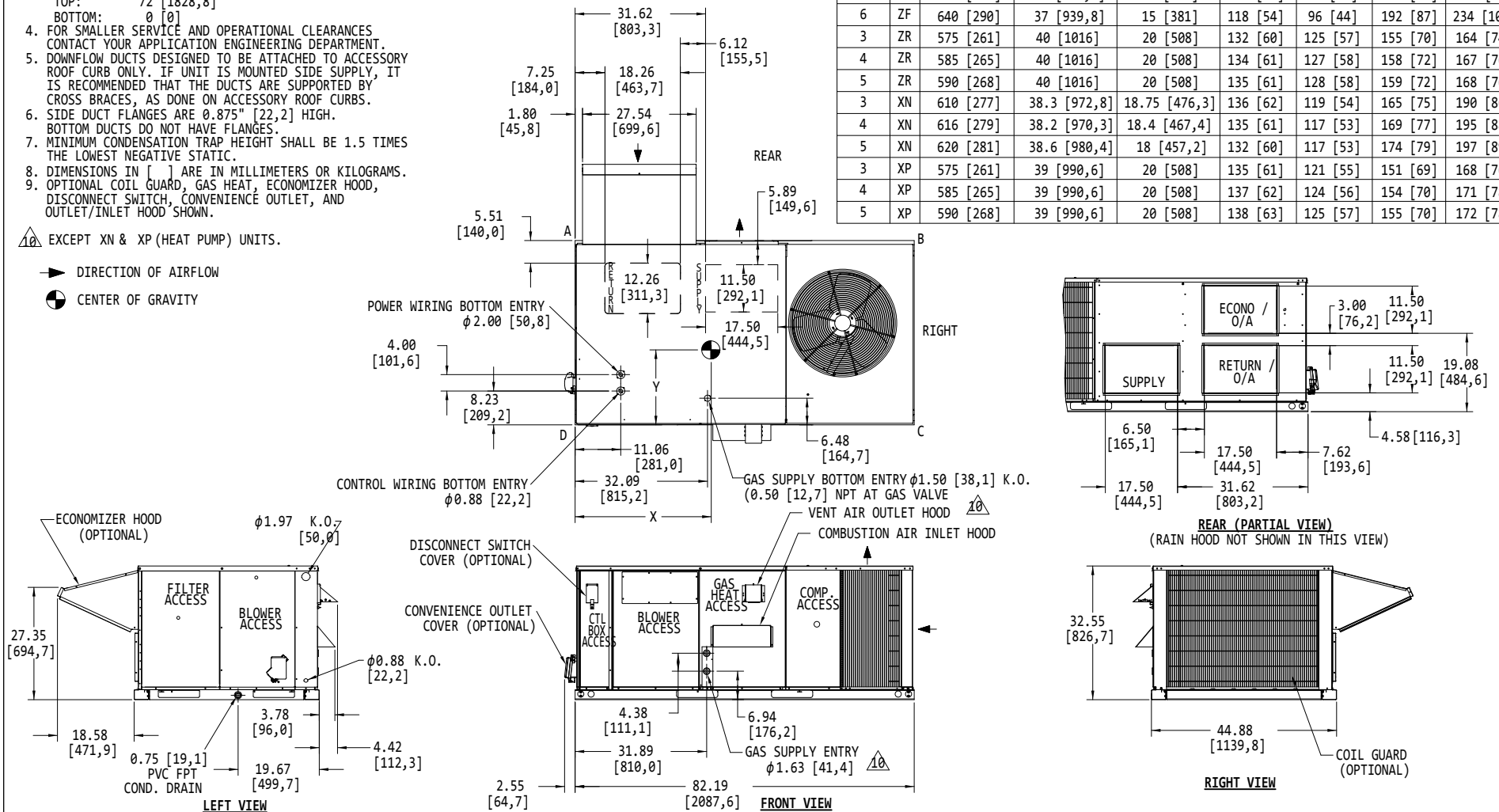
1. FOR OUTDOOR USE ONLY.
2. WEIGHTS SHOWN ARE FOR COOLING ONLY UNITS.
3. MIN. CLEARANCES TO BE:
 - RIGHT SIDE: 24 [609,6]
 - LEFT SIDE: 24 [609,6] (LESS ECONOMIZER)
 - 36 [914,4] (WITH ECONOMIZER)
 - FRONT: 24 [609,6] (COOLING/ELECTRIC HEAT)
 - 32 [812,8] (GAS HEAT)
 - REAR: 12 [304,8] (LESS ECONOMIZER)
 - 36 [914,4] (WITH ECONOMIZER OR FIXED AIR/MOTORIZED DAMPER)
 - TOP: 72 [1828,8]
 - BOTTOM: 0 [0]
4. FOR SMALLER SERVICE AND OPERATIONAL CLEARANCES CONTACT YOUR APPLICATION ENGINEERING DEPARTMENT.
5. DOWNFLOW DUCTS DESIGNED TO BE ATTACHED TO ACCESSORY ROOF CURB ONLY. IF UNIT IS MOUNTED SIDE SUPPLY, IT IS RECOMMENDED THAT THE DUCTS ARE SUPPORTED BY CROSS BRACES, AS DONE ON ACCESSORY ROOF CURBS.
6. SIDE DUCT FLANGES ARE 0.875" [22,2] HIGH. BOTTOM DUCTS DO NOT HAVE FLANGES.
7. MINIMUM CONDENSATION TRAP HEIGHT SHALL BE 1.5 TIMES THE LOWEST NEGATIVE STATIC.
8. DIMENSIONS IN [] ARE IN MILLIMETERS OR KILOGRAMS.
9. OPTIONAL COIL GUARD, GAS HEAT, ECONOMIZER HOOD, DISCONNECT SWITCH, CONVENIENCE OUTLET, AND OUTLET/INLET HOOD SHOWN.

TONNAGE	UNIT	OPERATING WEIGHT (LBS) (BASE UNIT)	CENTER OF GRAVITY LOCATION (BASE UNIT)		4 POINT CORNER LOADS (LBS) (BASE UNIT)			
			X	Y	A	B	C	D
3	ZE	470 [213]	34.5 [876,3]	18.25 [463,6]	111 [50]	80 [36]	117 [53]	162 [73]
4	ZE	598 [271]	36 [914,4]	18.50 [469,9]	139 [63]	108 [49]	154 [70]	198 [90]
5	ZE	632 [287]	37.5 [952,5]	18.2 [462,3]	139 [63]	117 [53]	171 [78]	204 [93]
3	ZF	468 [212]	33 [838,2]	18.25 [463,6]	114 [52]	76 [35]	111 [50]	167 [76]
4	ZF	541 [245]	31.50 [800,1]	18.50 [469,9]	138 [63]	85 [39]	122 [55]	196 [89]
5	ZF	569 [258]	37 [939,8]	15 [381]	105 [48]	86 [39]	170 [77]	208 [94]
6	ZF	640 [290]	37 [939,8]	15 [381]	118 [54]	96 [44]	192 [87]	234 [106]
3	ZR	575 [261]	40 [1016]	20 [508]	132 [60]	125 [57]	155 [70]	164 [74]
4	ZR	585 [265]	40 [1016]	20 [508]	134 [61]	127 [58]	158 [72]	167 [76]
5	ZR	590 [268]	40 [1016]	20 [508]	135 [61]	128 [58]	159 [72]	168 [76]
3	XN	610 [277]	38.3 [972,8]	18.75 [476,3]	136 [62]	119 [54]	165 [75]	190 [86]
4	XN	616 [279]	38.2 [970,3]	18.4 [467,4]	135 [61]	117 [53]	169 [77]	195 [88]
5	XN	620 [281]	38.6 [980,4]	18 [457,2]	132 [60]	117 [53]	174 [79]	197 [89]
3	XP	575 [261]	39 [990,6]	20 [508]	135 [61]	121 [55]	151 [69]	168 [76]
4	XP	585 [265]	39 [990,6]	20 [508]	137 [62]	124 [56]	154 [70]	171 [78]
5	XP	590 [268]	39 [990,6]	20 [508]	138 [63]	125 [57]	155 [70]	172 [78]

EXCEPT XN & XP (HEAT PUMP) UNITS.

DIRECTION OF AIRFLOW

CENTER OF GRAVITY



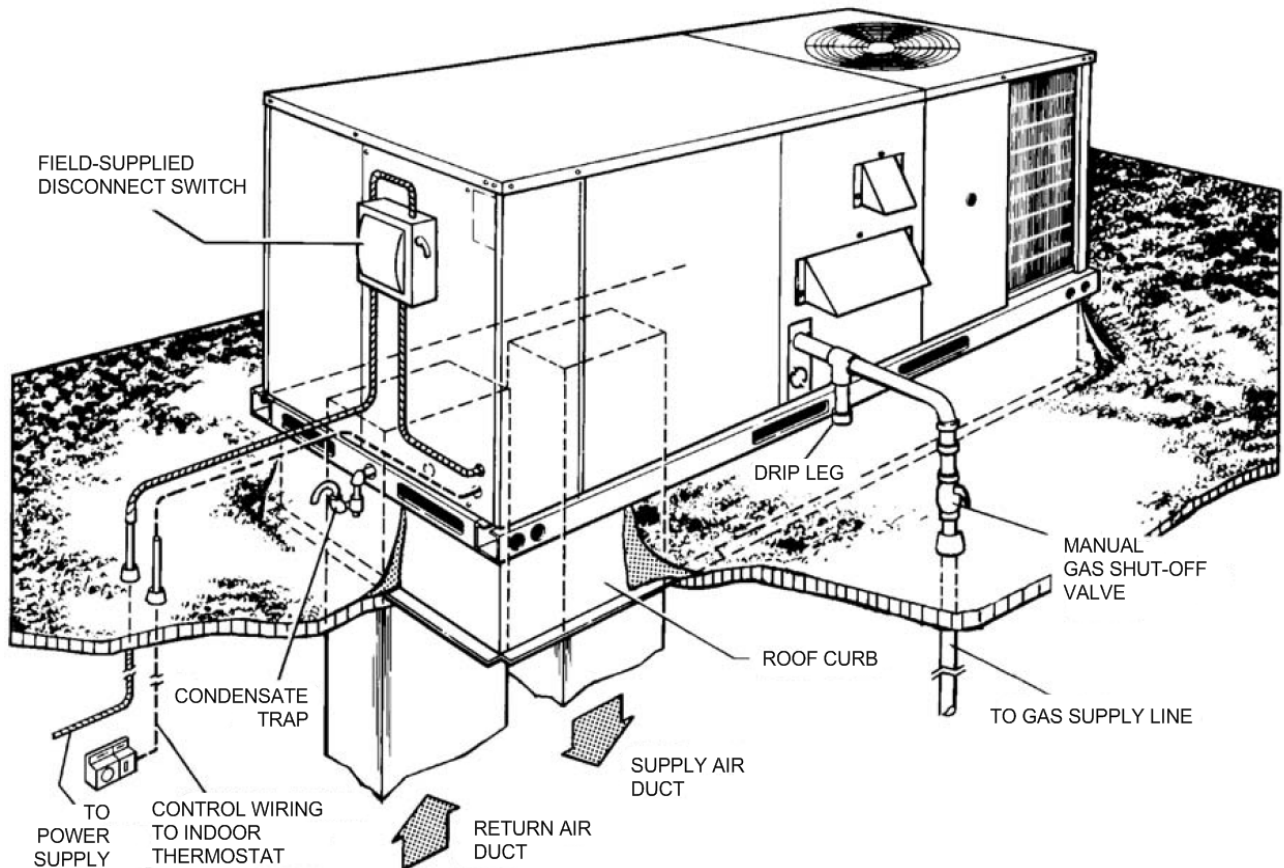
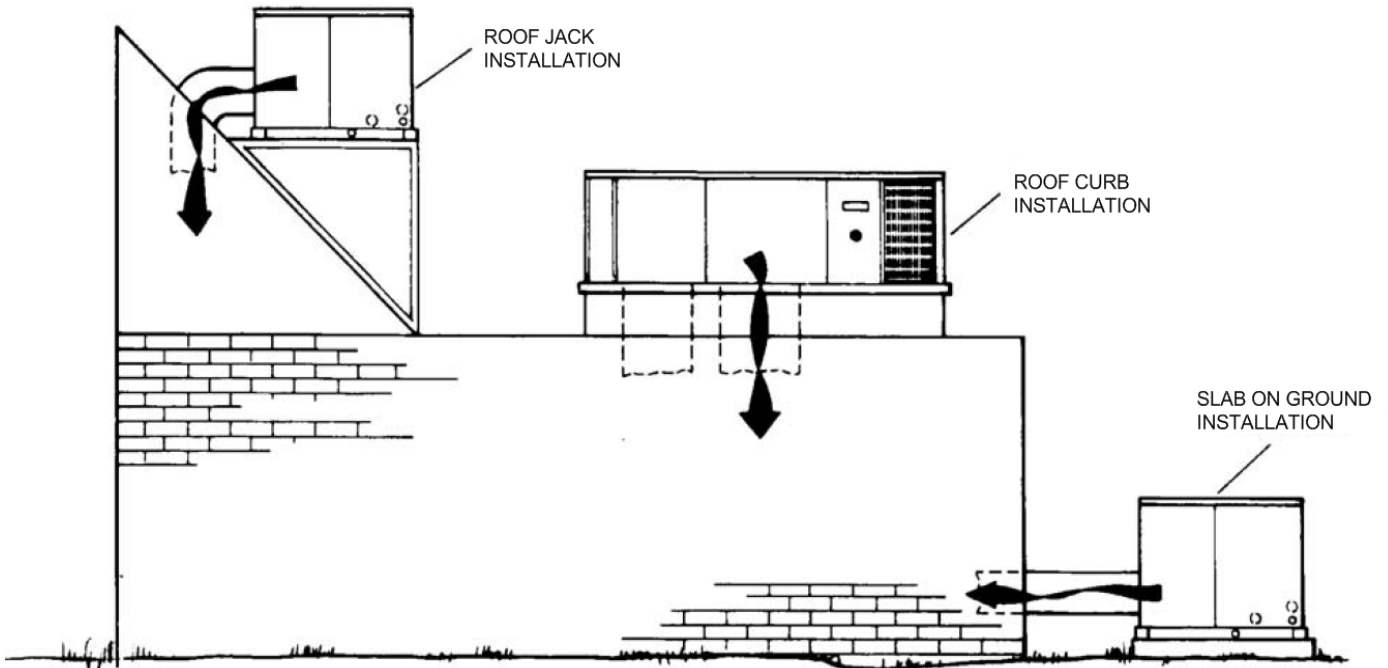
Project Name: **Rising Tide**

Unit Model #: **ZE060H12B2A1AAA1A1**

Quantity: **1**

System: **ZE060H12B2A1AAA1A1**

Typical Application



Project Name: **Rising Tide**

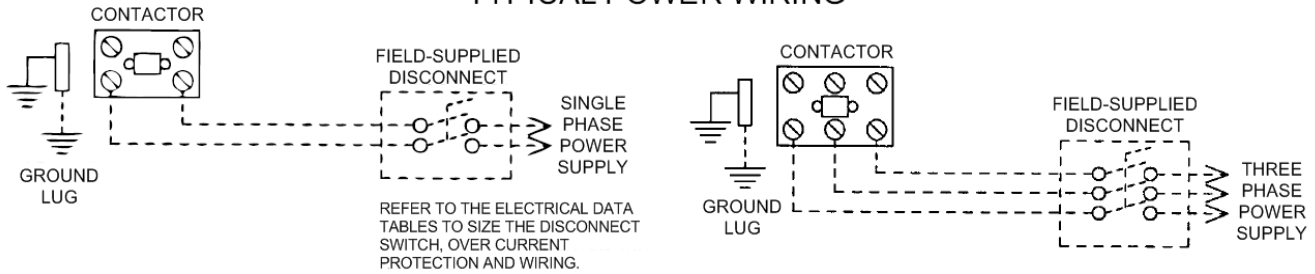
 Unit Model #: **ZE060H12B2A1AAA1A1**

 Quantity: **1**

 System: **ZE060H12B2A1AAA1A1**

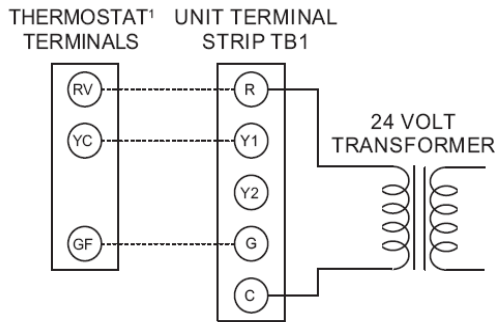
Typical Field Power and Control Wiring

TYPICAL POWER WIRING



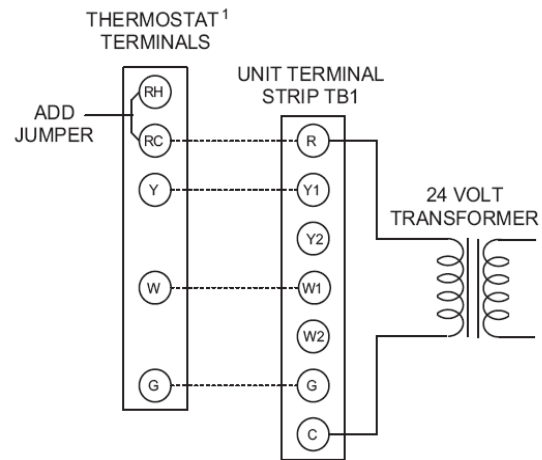
TYPICAL COOL/HEAT CONTROL WIRING

COOLING ONLY (24 VOLT THERMOSTAT)

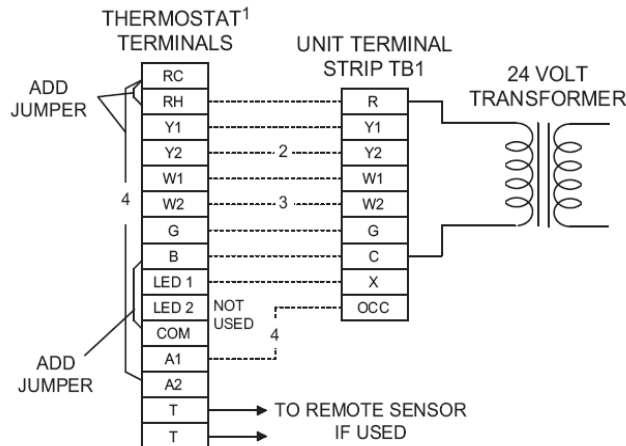


¹24 VOLT THERMOSTAT. TO CONTROL THE ECONOMIZER ON SECOND STAGE COOLING, USE A 2 STAGE COOLING THERMOSTAT.

COOLING / HEATING (24 VOLT THERMOSTAT)

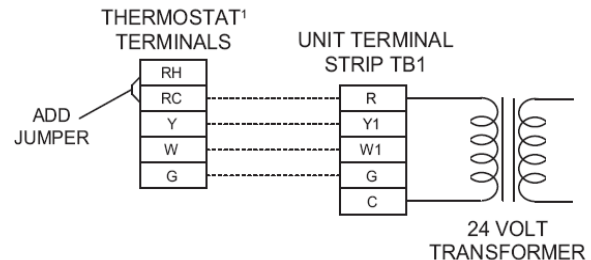


COOLING / HEATING (ELECTRONIC THERMOSTAT) MULTI STAGE



¹24 VOLT THERMOSTAT. TO CONTROL THE ECONOMIZER ON THE SECOND STAGE COOLING OR TO HAVE AN ELECTRIC HEAT ACCESSORY WITH TWO STAGES OF HEAT, USE A 2 STAGE COOL AND HEAT THERMOSTAT.

COOLING / HEATING (ELECTRONIC THERMOSTAT) SINGLE STAGE



- ¹ ELECTRONIC PROGRAMMABLE THERMOSTAT TYPICAL.
- ² SECOND STAGE COOLING IS NOT REQUIRED ON UNITS LESS ECONOMIZER.
- ³ SECOND STAGE HEATING IS ONLY REQUIRED ON UNITS WITH A TWO STAGE ELECTRIC HEATER OR 2 STAGE GAS HEAT.
- ⁴ REMOVE JUMPER J2 FROM TERMINALS 4 AND 9 ON JUMPER PLUG CONNECTOR P6 ON UNITS WITH ECONOMIZER. TERMINALS A1 AND A2 PROVIDE A RELAY OUT-PUT TO CLOSE THE OUTDOOR ECONOMIZER DAMPERS WHEN THE THERMOSTAT SWITCHES TO THE SET-BACK POSITION.

¹ELECTRONIC PROGRAMMABLE THERMOSTAT TYPICAL. TO CONTROL THE ECONOMIZER ON SECOND STAGE COOLING, USE A 2 STAGE COOL AND HEAT THERMOSTAT.

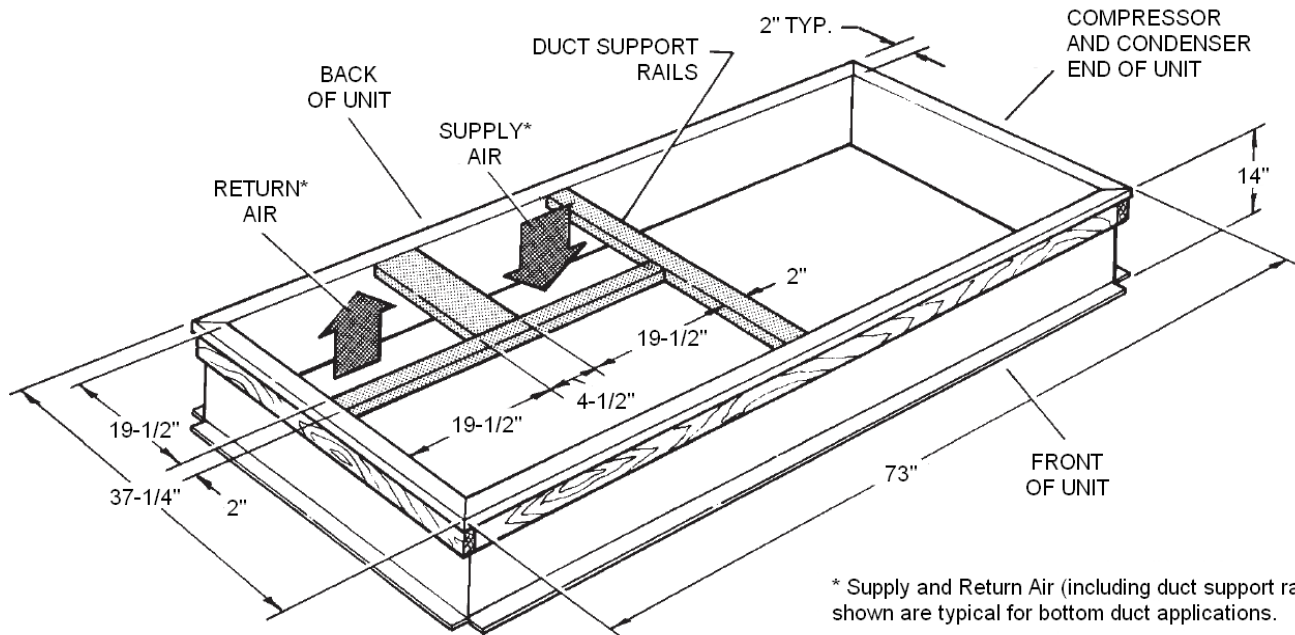
Project Name: **Rising Tide**

Unit Model #: **ZE060H12B2A1AAA1A1**

Quantity: **1**

System: **ZE060H12B2A1AAA1A1**

1RC0434 Roof Curb



DUCT SIZES:
 Supply Air = 19" x 19"
 Return Air = 19" x 19"

* Supply and Return Air (including duct support rails) shown are typical for bottom duct applications.
 For location of horizontal duct applications (on back of unit), refer to Unit Dimensions details.

1RC0434 Roof Curb Dimensions



Predator (3-12.5 Ton Package) N524

York Single Package R-410A Air Conditioner

Project Name: **Rising Tide**Unit Model #: **ZF090N18D2A1AAA1A1**Quantity: **1**System: **ZF090N18D2A1AAA1A1**

Cooling Performance

Total gross capacity	93.0 MBH
Sensible gross capacity	66.8 MBH
Total net capacity	86.6 MBH
Sensible net capacity	60.4 MBH
Efficiency (at ARI)	11.00 EER
Integrated eff. (at ARI)	12.20 IEER
Ambient DB temp.	95.0 °F
Entering DB temp.	80.0 °F
Entering WB temp.	67.0 °F
Leaving DB temp.	59.4 °F
Leaving WB temp.	57.2 °F
Power input (w/o blower)	7.30 kW
Sound power	89 dB(A)

Refrigerant

Refrigerant type	R-410A
Sys1	4 lbs 12 oz
Sys2	4 lbs 10 oz

Gas Heating Performance

Entering DB temp.	60 °F
Heating output capacity (Max)	144 MBH
Supply air	3000 CFM
Heating input capacity (Max)	180 MBH
Leaving DB temp.	104.4 °F
Air temp. rise	44.4 °F
SSE	80.0 %
Stages	2

Supply Air Blower Performance

Supply air	3000 CFM
Ext. static pressure	0.6 IWG
Addl. Unit Losses (Options/Accessories)	0.2 IWG
Blower speed	1245 RPM
Max BHP of Motor (including service factor)	3.45 HP
Duct location	Bottom
Motor rating	3.00 HP
Actual required BHP	2.03 HP
Power input	1.89 kW
Elevation	0 ft.
Drive type	BELT

Electrical Data

Power supply	230-3-60
Unit min circuit ampacity	42.4 Amps
Unit max over-current protection	50 Amps

Dimensions & Weight

Hgt	42 in.	Len	89 in.	Wth	59 in.
Weight with factory installed options		965 lbs.			

Clearances

Right	12 in.	Front	36 in.	Back	36 in.
Top	72 in.	Bottom	0 in.	Left	36 in.

Note: Please refer to the tech guide for listed maximum static pressures



7.5 Ton

- York Predator units are manufactured at an ISO 9001 registered facility and each rooftop is completely computer-run tested prior to shipment.

Unit Features

- Two Stage Cooling
- 180 MBH Input Aluminized Steel, Two Stage Gas Heat
- Either supply and/or return can be field converted from vertical to horizontal configuration without cutting panels.
- Full perimeter base rails with built in rigging capabilities
- Unit Cabinet Constructed of Powder Painted Steel, Certified At 1000 Hours Salt Spray Test (ASTM B-117 Standards)
- Reciprocating Compressor
- 3 HP High Static Belt Drive Blower
- Unit Ships with 2" Throwaway Filters
- Solid Core Liquid Line Filter Driers
- Replacement Filters: 4 - (24" x 16"). Unit accepts 2" or 4" wide filters.
- Short Circuit Current: 5kA RMS Symmetrical
- Single Point Power Connection
- Through-the-Curb and Through-the-Base Utility Connections
- Micro-Channel "all-aluminum" condenser coil, Copper tube/aluminum fin evaporator coil
- Composite Drain Pan - Front Connection
- Hinged Access Panels

Standard Unit Controller: Simplicity Control Board

- Safety Monitoring - Monitors the High and Low-Pressure Switches, the Freezestats, the Gas Valve, if Applicable, and the Temperature Limit Switch on Gas and Electric Heat Units. The Unit Control Board will Alarm on Ignition Failures, Safety Lockouts and Repeated Limit Switch Trips.
- An Integrated Low-Ambient Control, Anti-Short Cycle Protection, Lead-Lag, Fan On and Fan off Delays, Low Voltage Protection, On-Board Diagnostic and Fault Code Display. Allows all units to operate in the cooling mode down to 0 °F outdoor ambient without

BAS Controller

- Simplicity SE Controller including Discharge Air, Return Air, and Outdoor Air Temperature Sensors

Warranty

- One (1) Year Limited Warranty on the Complete Unit
- Five (5) Year Warranty - Compressors and Electric Heater Elements
- Ten (10) Year Limited Warranty - Aluminized Steel Heat Exchanger



Predator (3-12.5 Ton Package) N524

York Single Package R-410A Air Conditioner

Project Name: **Rising Tide**

Unit Model #: **ZF090N18D2A1AAA1A1**

Quantity: **1**

System: **ZF090N18D2A1AAA1A1**

Factory Installed Options

ZF090N18D2A1AAA1A1

Product Category:	ZF	Single Packaged R-410A Air Conditioner, Standard Efficiency 11.0 EER / 12.2 IEER (CV) / 12.7 IEER (IntelliSpeed) / 12.2 IEER (VAV)
Nominal Cooling Capacity:	090	7.5 Ton Two Stage Cooling
Heat Type and Nominal Heat Capacity:	N18	180 MBH Input Aluminized Steel, Two Stage Gas Heat
Airflow:	D	3 HP High Static Belt Drive Blower
Voltage:	2	208/230-3-60
Economizer / Damper:	A	
Service Options:	1	
Sensor Options:	A	
Controls:	A	Simplicity® SE Controller including Discharge Air, Return Air, and Outdoor Air Temperature Sensors
Refrigeration:	A	Micro-Channel "all-aluminum" condenser coil, Copper tube/aluminum fin evaporator coil
Additional Options:	1	Standard 2" Throwaway Filters
Cabinet Options:	A	Composite Drain Pan - Front Connection
Product Generation:	1	

Field Installed Accessories

- 1RC0471 - Roof Curb - 14" High, Flat, Uninsulated, Full Perimeter (Shipped Knocked Down) (135.0 lbs)
- 2EE04707424 - Economizer for Downflow, End Return Horizontal, or ERV Applications. Includes FA Hood, Exhaust Hood w/Baro Relief (145.0 lbs)
- 2SD04701024 - Smoke Detector Kit w/ Mounting Hardware for Supply (Horizontal/Downflow) and Return Air (Downflow Only) (8.0 lbs)

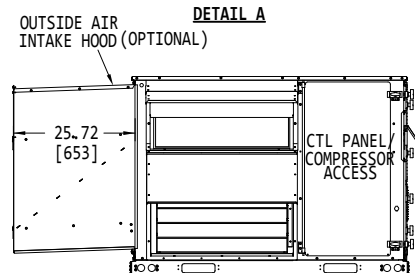
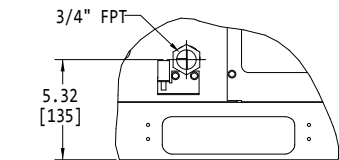
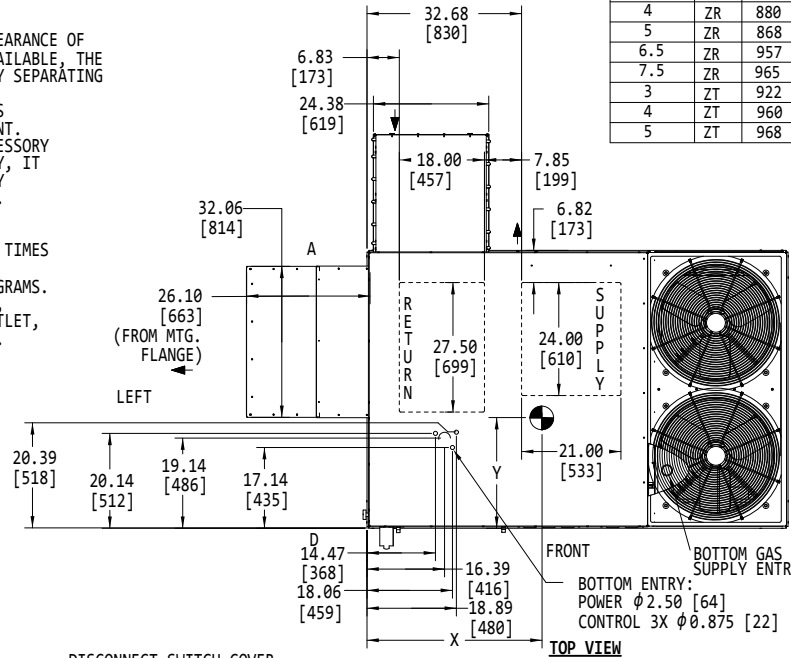
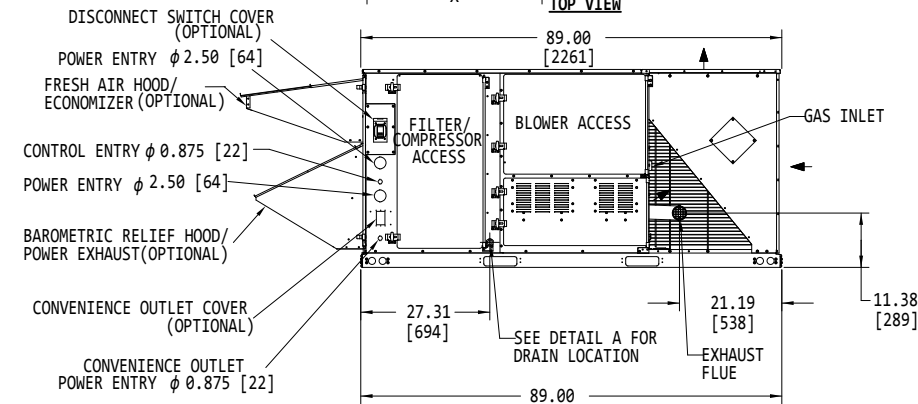
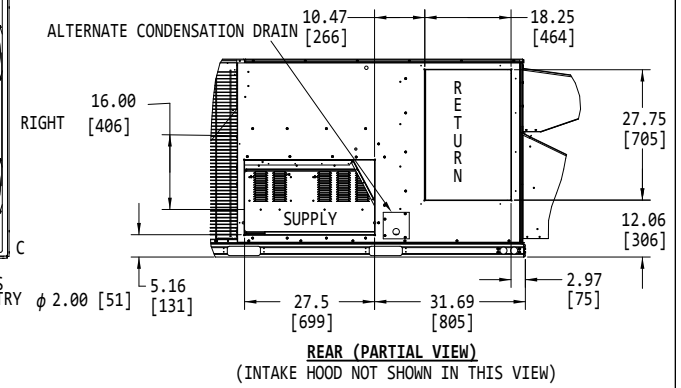
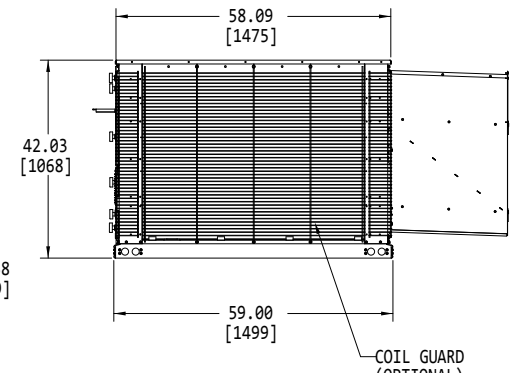
Project Name: **Rising Tide**

 Unit Model #: **ZF090N18D2A1AAA1A1**

 Quantity: **1**

 System: **ZF090N18D2A1AAA1A1**
Consolidated Drawing
NOTES:

1. FOR OUTDOOR USE ONLY.
2. WEIGHTS SHOWN ARE FOR COOLING ONLY UNITS.
3. MIN. CLEARANCES TO BE:
 - RIGHT SIDE: 12 [305]
 - LEFT SIDE: 36 [915]
 - FRONT: 36 [915]
 - REAR: 36 [915]
 - TOP: 72 [1830]
 - BOTTOM: 0 [0]
4. TO REMOVE THE SLIDE-OUT DRAIN PAN, A REAR CLEARANCE OF 60 in (1525 mm) IS REQUIRED. IF SPACE IS UNAVAILABLE, THE DRAIN PAN CAN BE REMOVED THROUGH THE FRONT BY SEPARATING THE CORNER WALL.
5. FOR SMALLER SERVICE AND OPERATIONAL CLEARANCES CONTACT YOUR APPLICATION ENGINEERING DEPARTMENT.
6. DOWNFLOW DUCTS DESIGNED TO BE ATTACHED TO ACCESSORY ROOF CURB ONLY. IF UNIT IS MOUNTED SIDE SUPPLY, IT IS RECOMMENDED THAT THE DUCTS ARE SUPPORTED BY CROSS BRACES, AS DONE ON ACCESSORY ROOF CURBS.
7. SIDE DUCT FLANGES ARE 0.75" HIGH. BOTTOM DUCTS DO NOT HAVE FLANGES.
8. MINIMUM CONDENSATION TRAP HEIGHT SHALL BE 1.5 TIMES THE LOWEST NEGATIVE STATIC.
9. DIMENSIONS IN [] ARE IN MILLIMETERS OR KILOGRAMS.
10. OPTIONAL COIL GUARDS, POWER EXHAUST, GAS HEAT ECONOMIZER, DISCONNECT SWITCH, CONVENIENCE OUTLET, AND BAROMETRIC RELIEF & FRESH AIR HOODS SHOWN. DELETED.
11. 8 TUBE HEAT EXCHANGER IS NOT AVAILABLE FOR 3 & 4 TON UNITS.

 DIRECTION OF AIRFLOW
 CENTER OF GRAVITY

LEFT VIEW

TOP VIEW

FRONT VIEW
 (OPTIONAL FRONT COIL GUARD NOT SHOWN IN THIS VIEW)

REAR (PARTIAL VIEW)
 (INTAKE HOOD NOT SHOWN IN THIS VIEW)

RIGHT VIEW

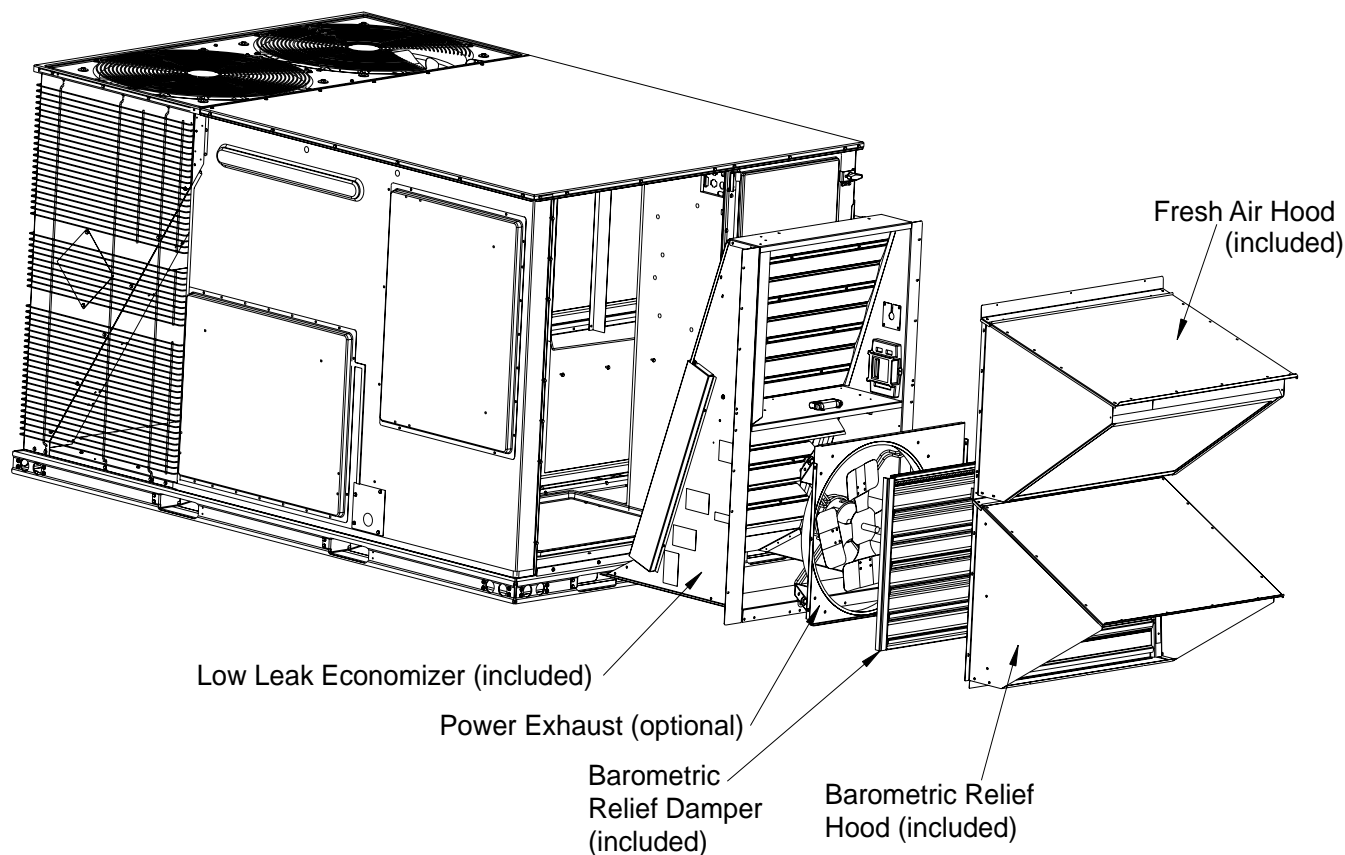
TONNAGE	UNIT	OPERATING WEIGHT (LBS) (BASE UNIT)	CENTER OF GRAVITY LOCATION (BASE UNIT)		4 POINT CORNER LOADS (LBS) (BASE UNIT)			
			X	Y	A	B	C	D
6.5	ZF	860 [390]	38 [965]	24 [610]	200 [91]	149 [68]	218 [99]	292 [133]
7.5	ZF	880 [399]	38 [965]	24 [610]	205 [93]	153 [69]	223 [101]	299 [136]
5	ZH	864 [393]	40 [1016]	26 [660]	210 [95]	171 [78]	217 [99]	266 [121]
6.5 & 7.5	ZH	910 [413]	38 [965]	24 [610]	212 [96]	158 [72]	230 [104]	309 [140]
5	ZJ	770 [349]	40 [1016]	24 [610]	172 [78]	141 [64]	205 [93]	251 [114]
4	ZR	880 [399]	40 [1016]	26 [660]	214 [97]	174 [79]	221 [100]	271 [123]
5	ZR	868 [394]	40 [1016]	26 [660]	211 [96]	172 [78]	218 [99]	267 [121]
6.5	ZR	957 [435]	38 [965]	23 [584]	214 [97]	161 [73]	249 [113]	333 [151]
7.5	ZR	965 [438]	38 [965]	23 [584]	216 [98]	161 [73]	251 [114]	337 [153]
3	ZT	922 [418]	42.4 [1077]	24.7 [627]	202 [92]	184 [84]	255 [116]	281 [128]
4	ZT	960 [436]	42.5 [1080]	25.5 [648]	217 [98]	198 [90]	260 [118]	285 [129]
5	ZT	968 [439]	41.6 [1057]	25.5 [648]	223 [101]	196 [89]	257 [117]	293 [133]

York Single Package R-410A Air Conditioner

Project Name: **Rising Tide**Unit Model #: **ZF090N18D2A1AAA1A1**Quantity: **1**System: **ZF090N18D2A1AAA1A1**

Low Leak Downflow Economizer

Low Leak Downflow Economizer (shown with optional Power Exhaust)



Low leak economizers are capable achieving low leakage rates of 3 cfm/sq. ft at 1" of static pressure, meeting or exceeding the following standards:

- ASHRAE 90.1-2010
- ASHRAE 62
- AMCA 511 (licensed as Class 1A damper)
- International Energy Conservation Code (IECC)
- California Title 24

The outdoor intake opening shall be covered with a rain hood that matches the exterior of the unit. Water eliminator/filters shall be provided.

Simultaneous economizer/compressor operation is also possible. Dampers shall fully close on power loss.

York Single Package R-410A Air Conditioner

Project Name: **Rising Tide**

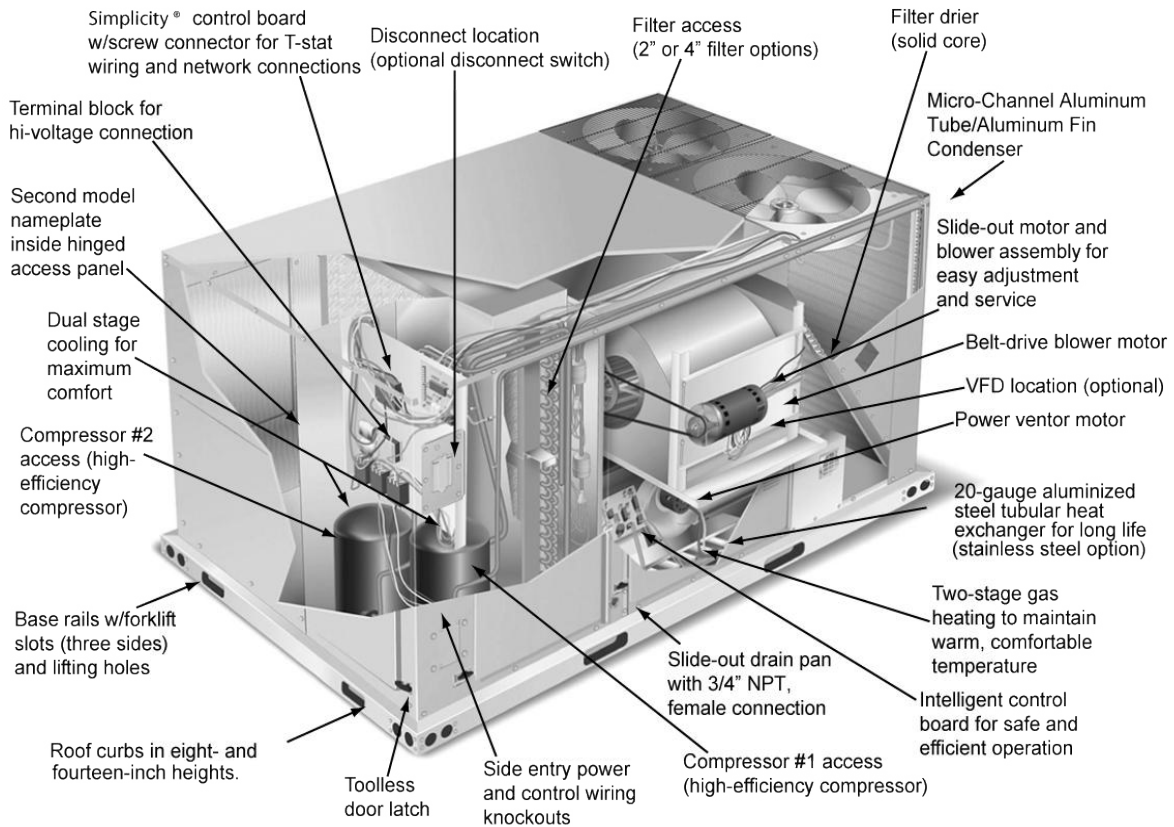
Unit Model #: **ZF090N18D2A1AAA1A1**

Quantity: **1**

System: **ZF090N18D2A1AAA1A1**

Component Location

6 1/2 Through 10 Tons



York Single Package R-410A Air Conditioner

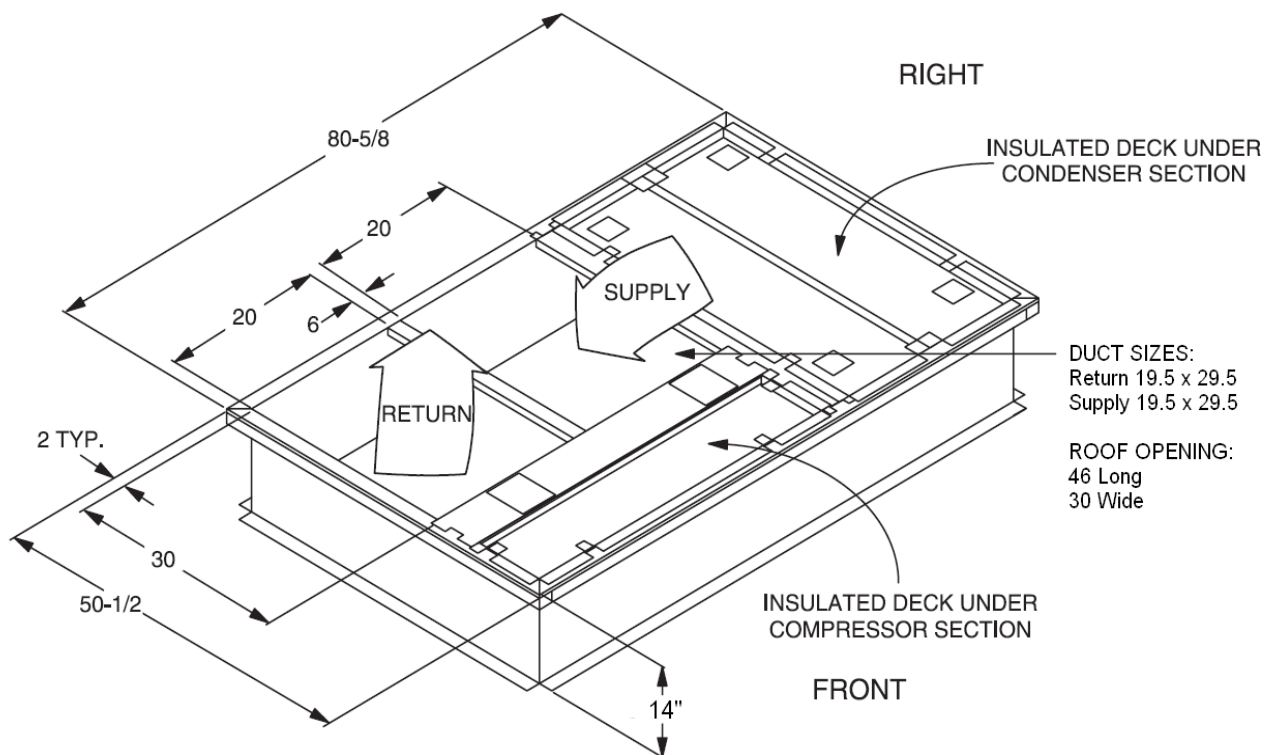
Project Name: **Rising Tide**

Unit Model #: **ZF090N18D2A1AAA1A1**

Quantity: **1**

System: **ZF090N18D2A1AAA1A1**

1RC0471 Roof Curb



* Supply and Return Air (Including duct support rails) as shown, are typical for bottom duct applications.
For location of horizontal duct applications (On rear of unit), refer to Unit Dimensions details.

1RC0471 Roof Curb Dimensions