

OUTDOOR EQUIPMENT SCHEDULE

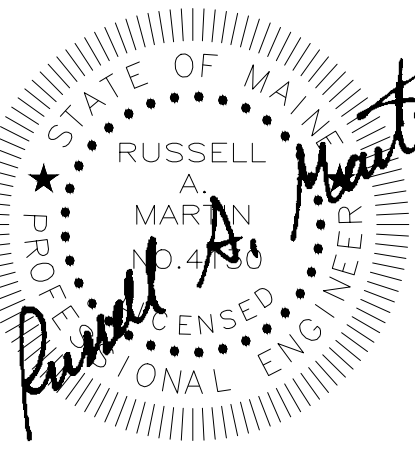
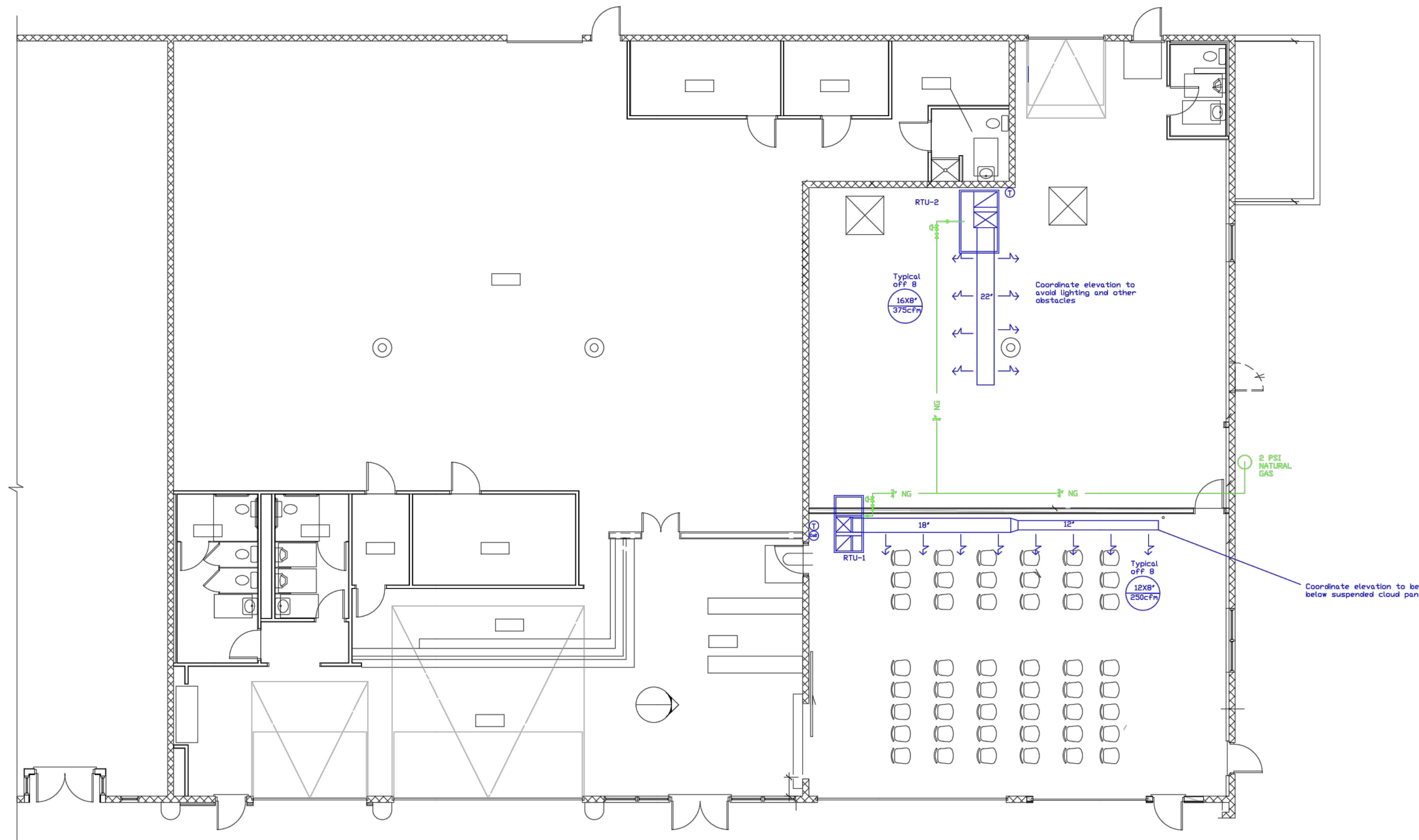
UNIT	MAKE	MODEL	TONS	BTU HEAT	BTU COOL	Total CFM	OA CFM	VOLT	PHASE	MCA	MFS	notes
RTU-1	YORK	ZE060H12B2A1AAA1A	5	120,000	60,000	1,990	400	230	3	28.7Amp	35 Amp	1,2,3
RTU-2	YORK	ZF090N18D2A1AAA1A	7/1/2002	180,000	90,000	3,000		230	3	42.4 Amp	50 Amp	1,2,4

NOTES

- 1 PROVIDE 14" ROOF CURB
- 2 PROVIDE ECONOMIZER WITH BAROMETRIC RELIEF
- 3 INCLUDE CO2 SENSOR AND VENTILATION CONTROL
- 4 PROVE SMOKE DETECTOR

RTU-1 BASED ON CONFERENCE ROOM OCCUPANCY OF 60 PEOPLE

GENERAL NOTES	
1	ALL WORK SHALL BE IN ACCORDANCE WITH THE MAINE UNIFORM BUILDING AND ENERGY CODE (MUBEC) IN EFFECT AS OF OCT 1, 2017 INCLUDING, BUT NOT LIMITED TO THE INTERNATIONAL BUILDING CODE - 2009, ASHRAE ENERGY STANDARD 90.1-2007, ASHRAE VENTILATION STANDARD 62.1-2007, MAINE FUEL & BOILER CODES, NFPA 54-2012, 90A-2012, 211-2013, THE NATIONAL ELECTRICAL CODE AND ALL APPLICABLE STATE AND LOCAL CODES.
2	OWNER SHALL HAVE THE RIGHT OF FIRST REFUSAL OF ANY DISCONTINUED EQUIPMENT. REMOVE ALL UNCLAIMED EQUIPMENT FROM THE SITE AND DISPOSE OF PROPERLY.
3	CONFIRM ALL EQUIPMENT SIZES AND REQUIRED CLEARANCES BEFORE ORDER OR FABRICATION.
4	MAINTAIN PROPER CLEARANCES TO ALL ELECTRICAL PANELS AND PROPER SERVICE CLEARANCE TO ALL EQUIPMENT.
5	VENTILATION RATES FOR ROOM 111 ARE BASED ON ASHRAE 62.1-2007 FOR CONFERENCE / MEETING ROOM OCCUPANCIES AND 60 OCCUPANTS AS INDICATED ON THE LIFE SAFETY PLAN DATED MAY 26 2017 BY RYAN SENATORE ARCHITECTURE.
6	RTU-1 SHALL RUN WHENEVER ROOM 111 IS OCCUPIED. A CO2 SENSOR SHALL BE MOUNTED NEAR THE AH RETURN AND MODULATE UNIT OA DAMPER OPEN WHEN CO2 SETPOINT (INITIALLY 1100 PPM) IS EXCEEDED. UNIT SHALL CYCLE AT NIGHT WITH OUTSIDE AIR DAMPER CLOSED TO MAINTAIN HEATING/COOLING UNOCCUPIED TEMPERATURES. RTU-2 SERVES A "PROCESS" AREA AND SHALL OPERATE AS DETERMINED BY THE PROCESS OPERATORS.
7	TEST AND BALANCE COMPLETED AIR SYSTEMS.
8	INSTALL RTUS TO OBTAIN A MINIMUM OF 10 FEET BETWEEN UNIT INTAKES AND PLUMBING VENTS / EXHAUSTS. AIR INTAKE MAY BE 3 FEET FROM PLUMBING VENTS IF VENT TERMINATION IS AT LEAST 3 FEET ABOVE THE INTAKE (PER ASHRAE 62.1).
9	PROVIDE MERV 8 FILTERS FOR EXISTING AIR HANDLING UNITS AND ERV.
10	UNIT OUTSIDE AIR DAMPERS SHALL BE LOW LEAKAGE TYPE.
11	COORDINATE DUCT LOCATIONS WITH OTHER EQUIPMENT. CONSTRUCT GALVANIZED METAL OR STAINLESS STEEL DUCTWORK IN ACCORDANCE WITH SMACNA DUCT STANDARDS.
12	INSULATE SUPPLY DUCTS WITH MIN. R-1.9 DUCT WRAP. INSULATION NOT REQUIRED FOR RETURN DUCTS. BASED ON ASHRAE 90.1-2007 FOR DUCTS IN A CONDITIONED SPACE.
13	SUPPLY GRILLES SHALL BE RECTANGULAR FACE, ADJUSTIBLE DOUBLE DEFLECTION. PROVIDE RETURN GRILLES FOR BOTH RETURN DUCTS.



GAMMON'S
REFRIGERATION AIR CONDITIONING HEATING

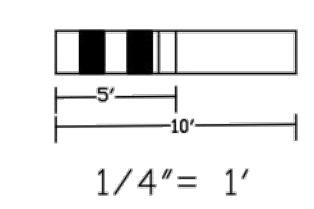
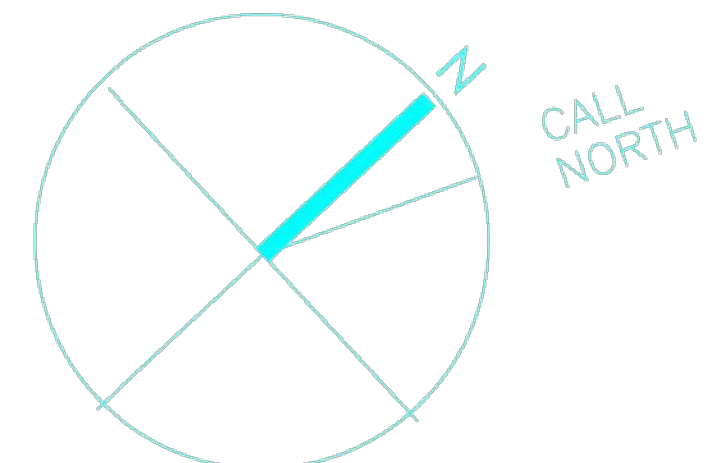
Gammons Corporation
110 Main Street
Saco, Maine 04072

Rising Tide
103 Fox Street
Portland, Maine 04101

File: rising_tide_10022017	
Date	Revision
10-05-2017	1

MECH PLAN

M1



THIS RECORD DRAWING HAS BEEN PREPARED BASED UPON INFORMATION PROVIDED TO THE ENGINEER. WHILE THIS INFORMATION IS BELIEVED TO BE RELIABLE, COMPLETENESS OR EXACT DETAILS HAVE NOT BEEN CONFIRMED BY THE ENGINEER. THOSE RELYING ON THIS RECORD DOCUMENT ARE ADVISED TO OBTAIN INDEPENDENT VERIFICATION OF ITS ACCURACY.