

© 2017 RYAN SENATORE ARCHITECTURE

# RISEING TIDE BREWING - EXPANSION

103 FOX STREET  
PORTLAND, MAINE 04101

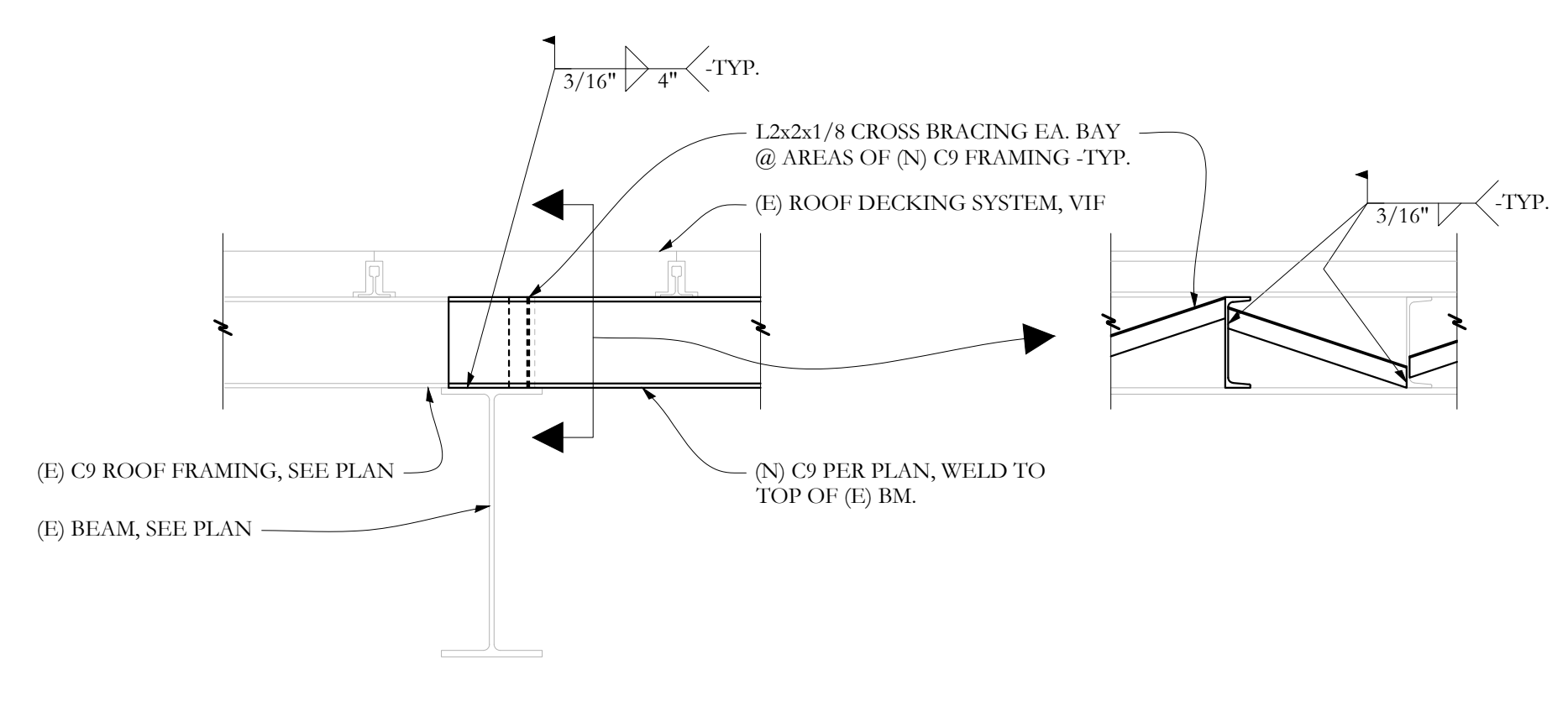


**RYAN SENATORE ARCHITECTURE**  
565 CONGRESS ST. SUITE 304  
PORTLAND, MAINE 04101  
207-650-6414  
senatorearchitecture.com

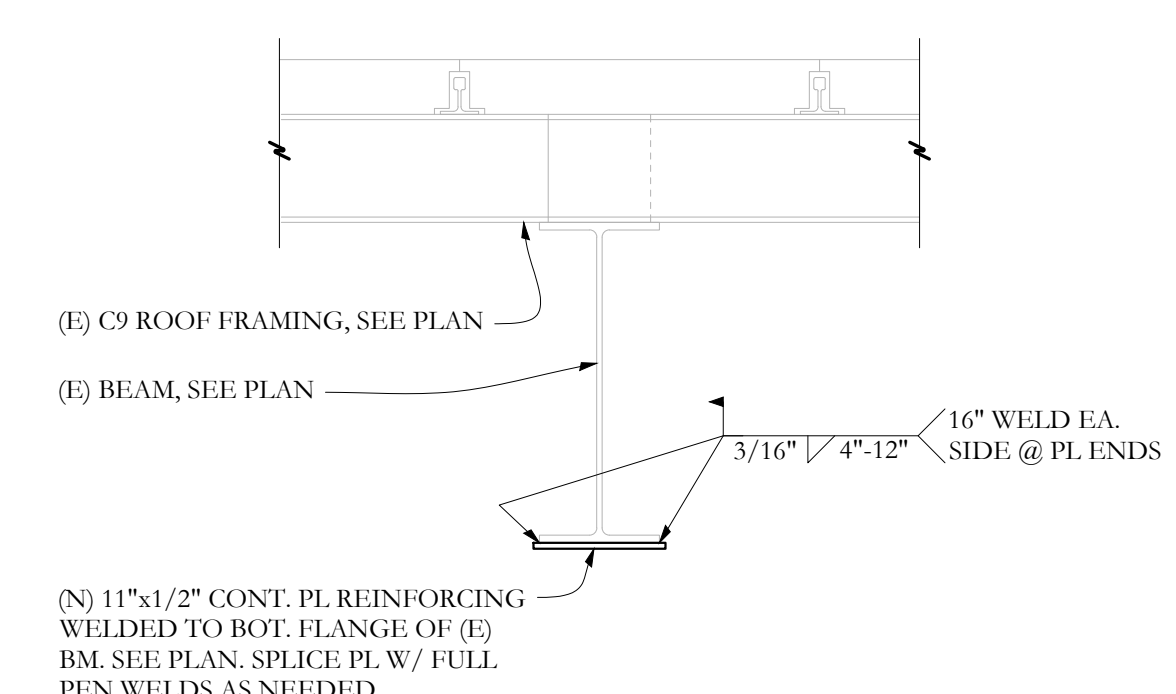
CONSULTANTS:  
**Structural Integrity**  
77 Oak Street  
Portland, ME 04101  
207-774-4614

REVISIONS:

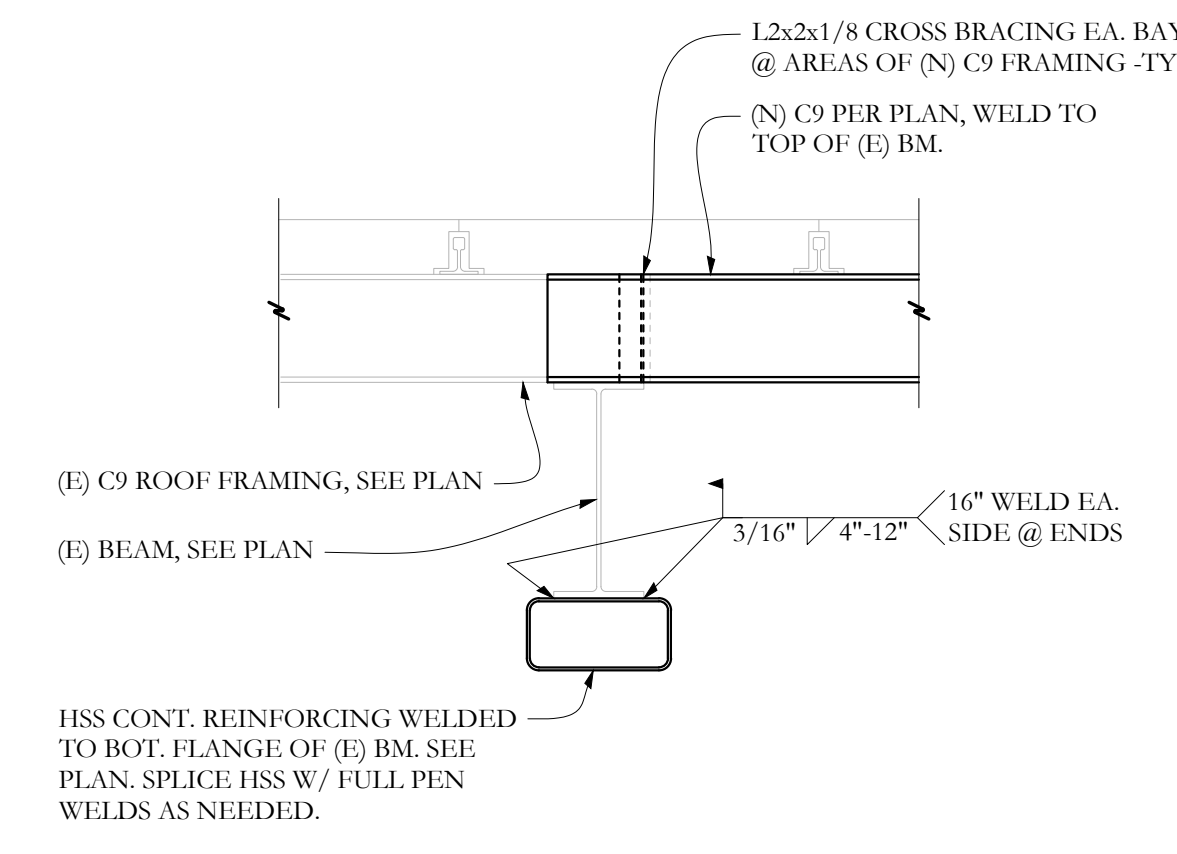
DATE: 12 April, 2017  
PROJECT No. 1718  
DRAWN BY: BDH  
CHECKED BY: ACJ  
SCALE: AS NOTED  
SHEET TITLE: DETAILS



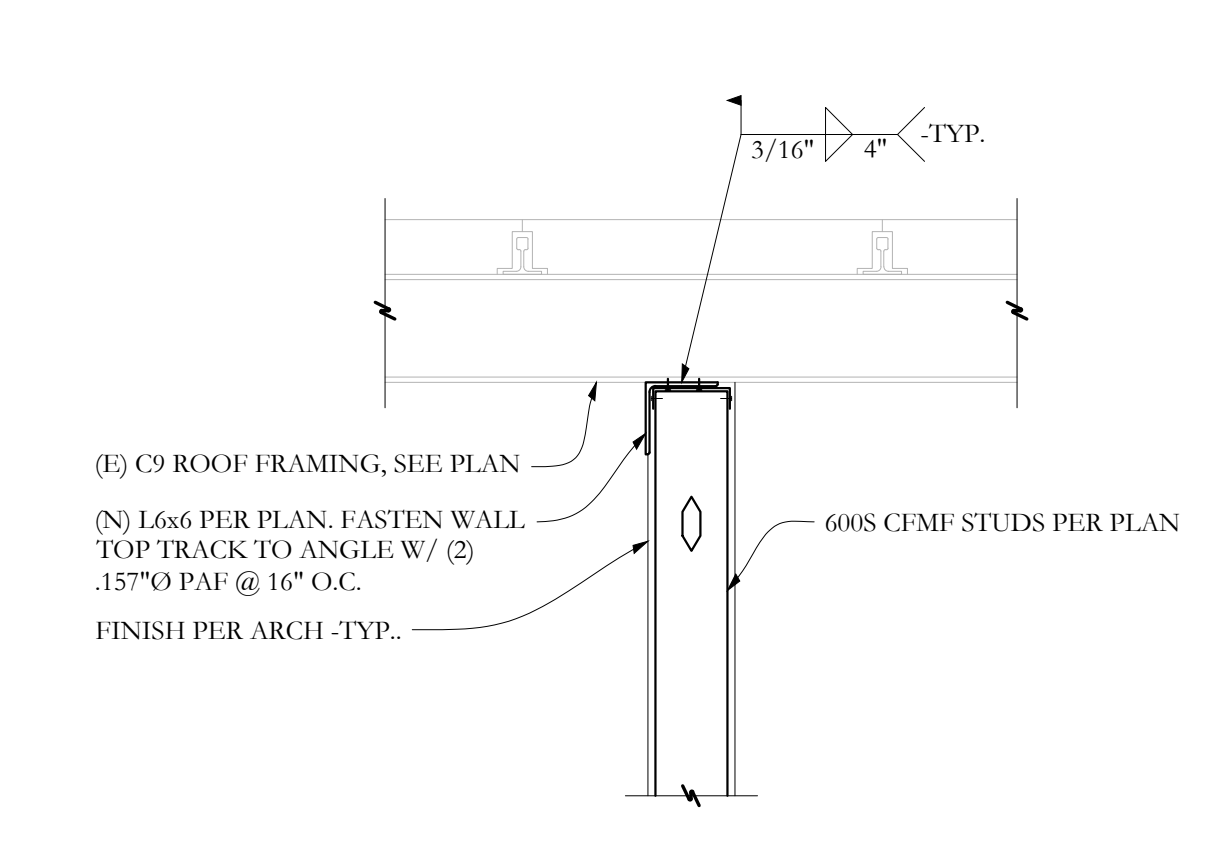
SECTION **H** S2.1 3/4"=1'-0



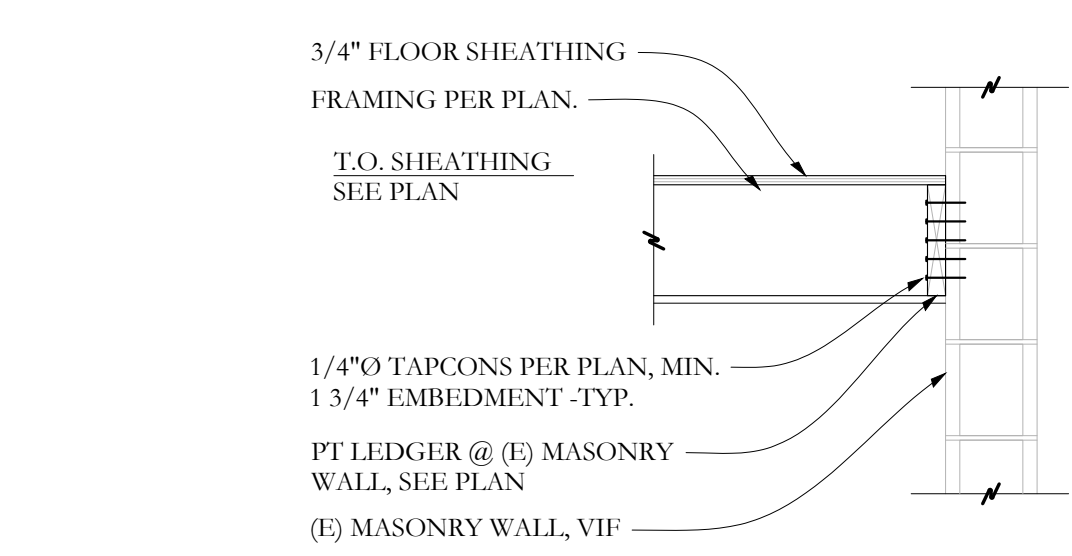
SECTION **I** S2.1 3/4"=1'-0



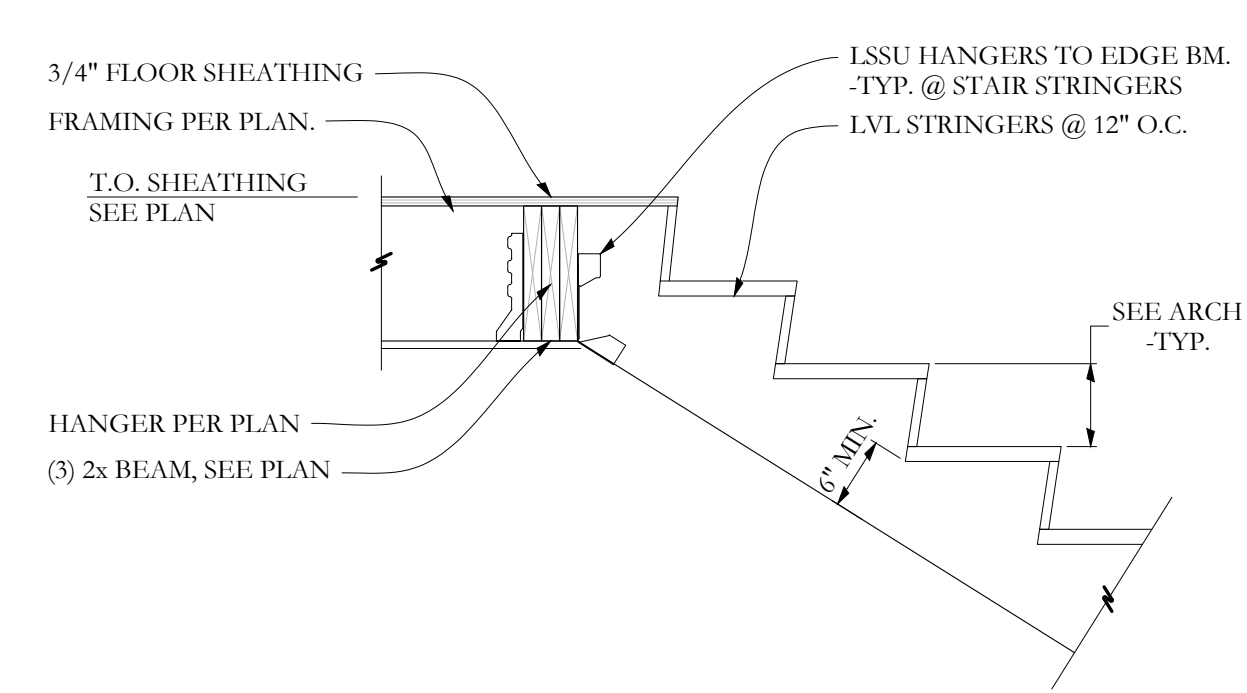
SECTION **K** S2.1 3/4"=1'-0



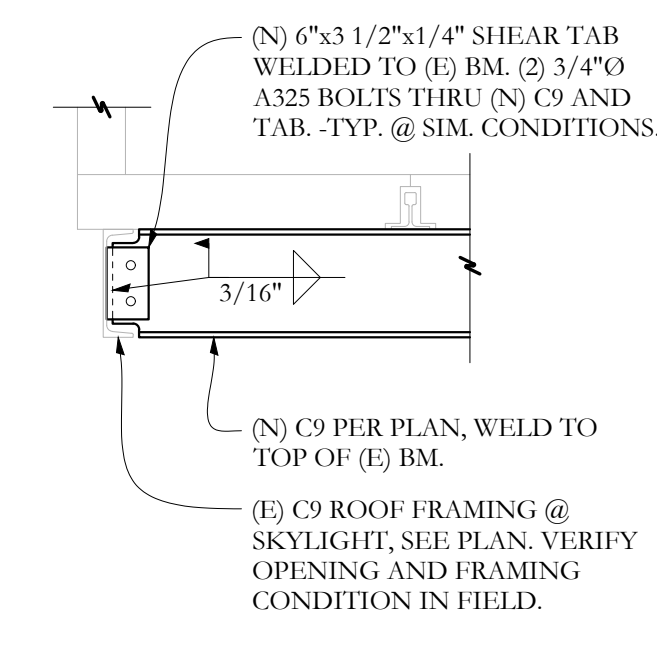
SECTION **L** S2.1 3/4"=1'-0



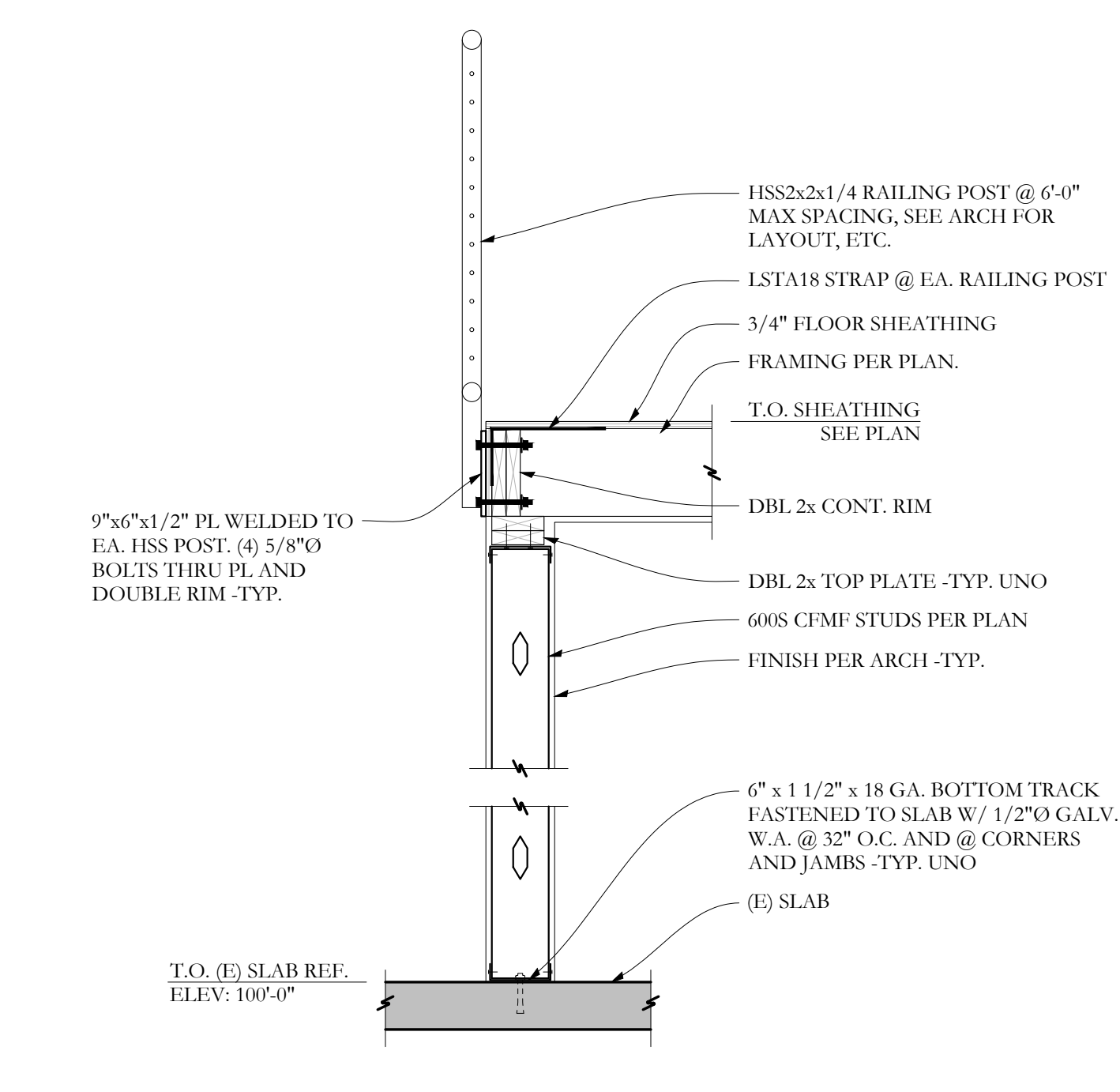
SECTION **E** S2.1 3/4"=1'-0



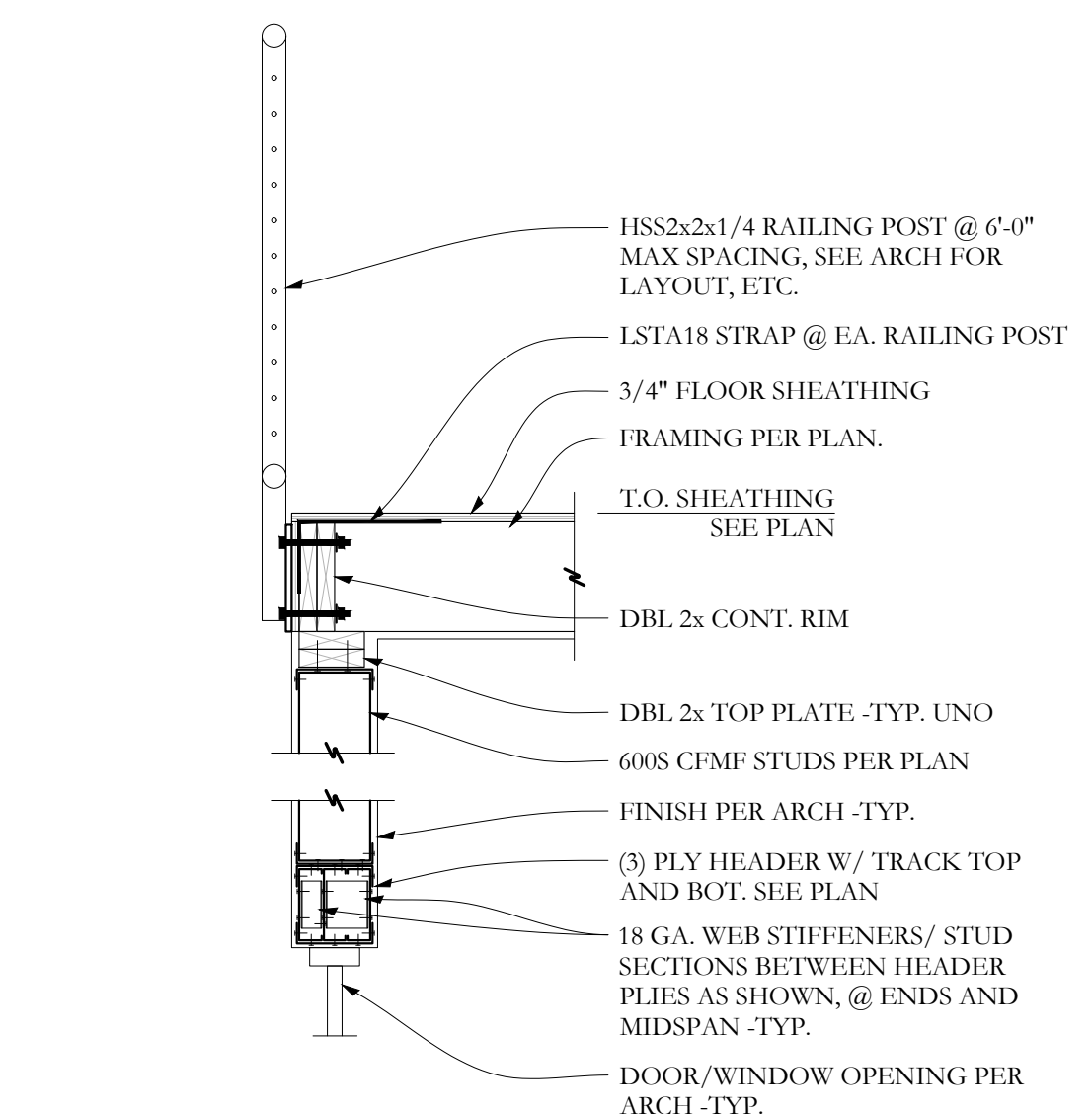
SECTION **F** S2.1 3/4"=1'-0



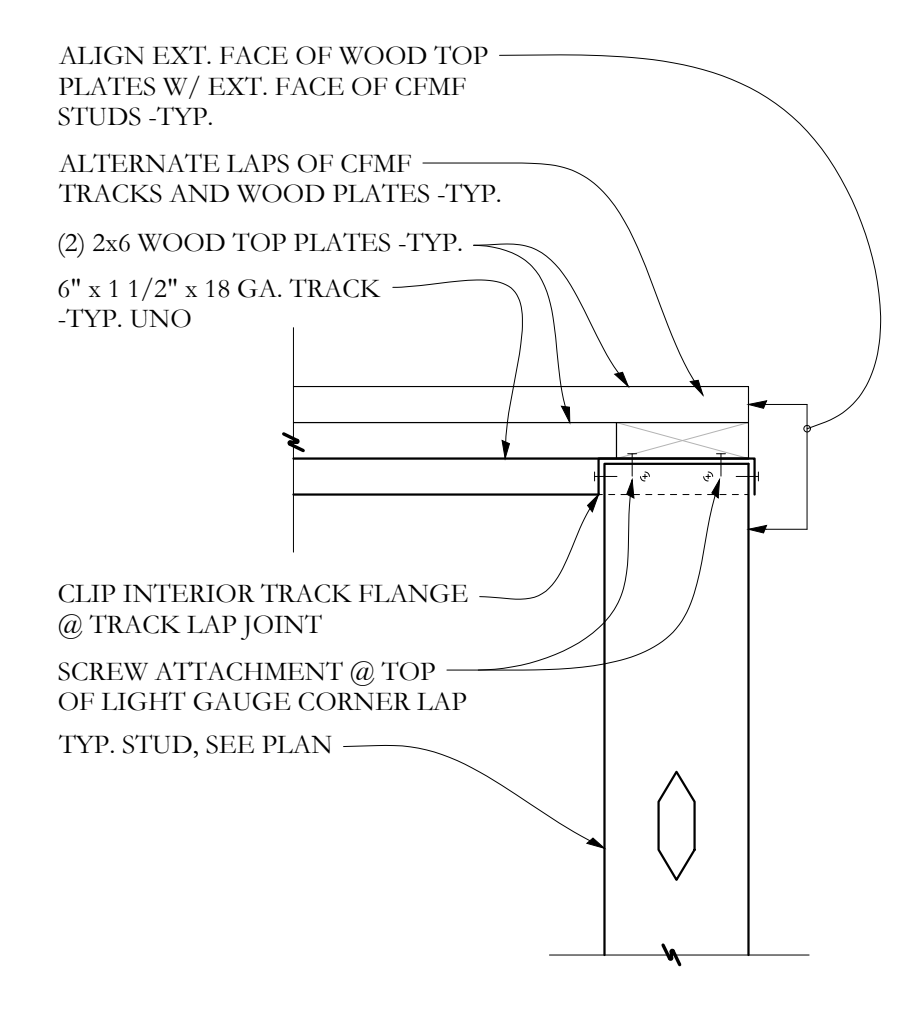
SECTION **G** S2.1 3/4"=1'-0



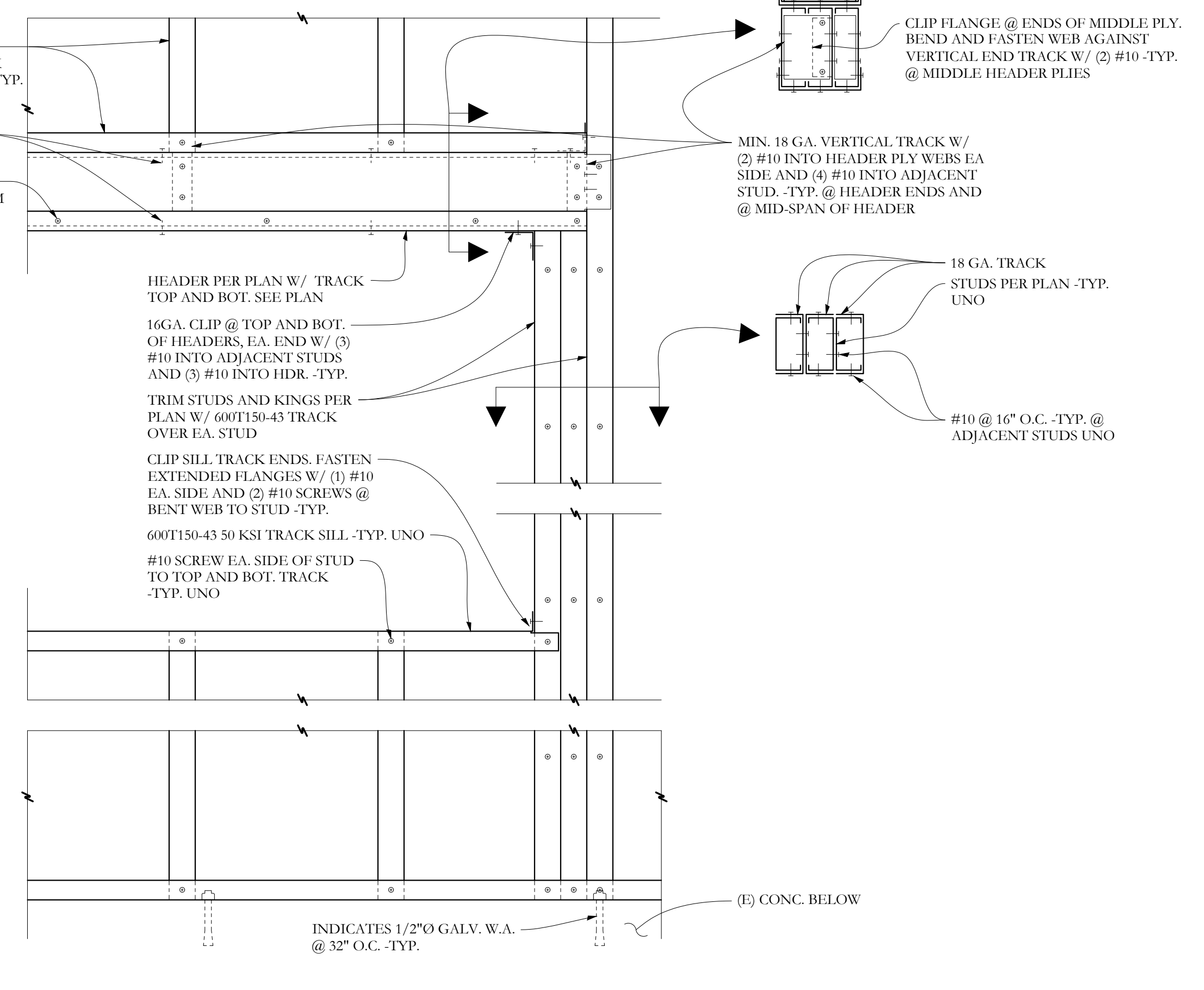
SECTION **A** S2.1 3/4"=1'-0



SECTION **B** S2.1 3/4"=1'-0



SECTION **C** S2.1 1 1/2"=1'-0  
TYPICAL TOP PLATE CORNER LAP



SECTION **D** S2.1 1 1/2"=1'-0  
TYPICAL HEADERS AND SILLS

FOR PERMIT

**Structural Integrity**  
Consulting Engineers, Inc. BUILD WITH CONFIDENCE  
77 Oak Street  
Portland, ME, 04101  
p. 207-774-4614  
f. 866-735-7835  
www.structuralintegrity.com

S2.1

SI 17-0113