

© 2017 RYAN SENATORE ARCHITECTURE

RISING TIDE BREWING - EXPANSION
 103 FOX STREET
 PORTLAND, MAINE 04101



RYAN SENATORE
 ARCHITECTURE
 565 CONGRESS STREET
 PORTLAND, MAINE 04101
 207-650-6414
 senatorearchitecture.com

CONSULTANTS:

REVISIONS:

DATE: MAY 12, 2017

PROJECT No. 1718

DRAWN BY: JPF

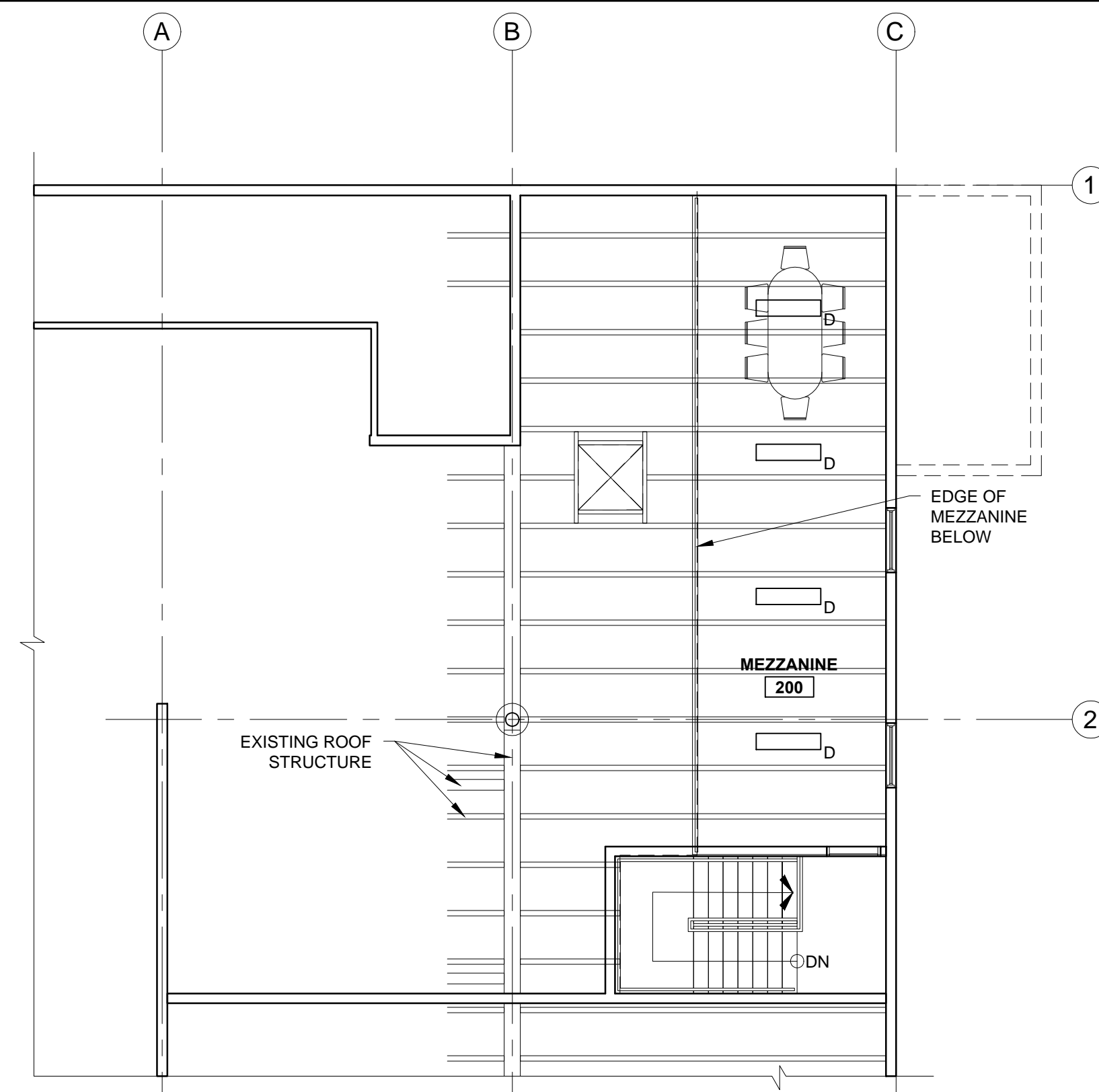
CHECKED BY: RJS

SCALE: AS NOTED

SHEET TITLE:

REFLECTED CEILING PLAN

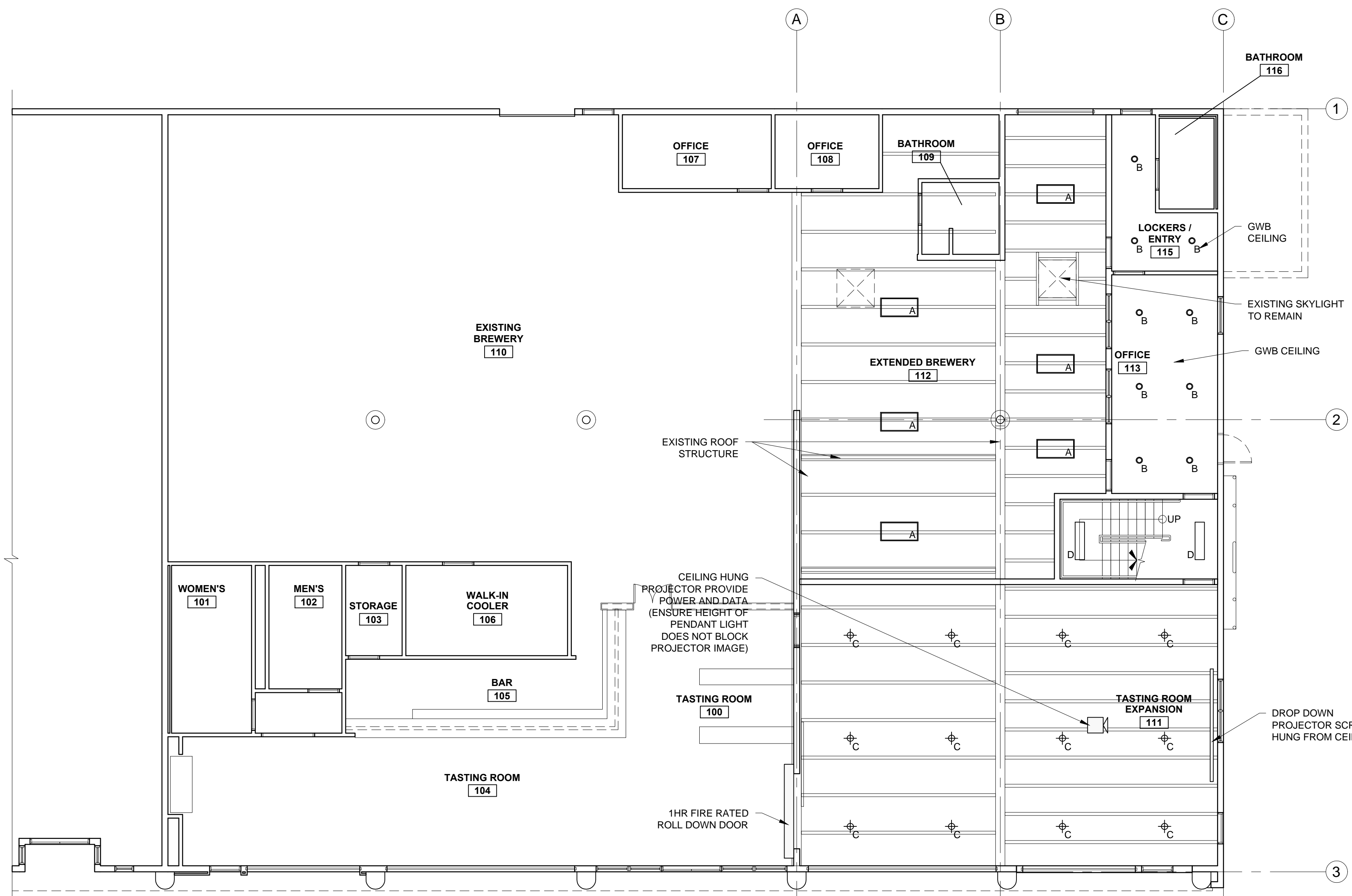
A1-2



2 REFLECTED CEILING PLAN
 1/4" = 1'-0"

RCP NOTES	
1.)	G.C. TO COORDINATE LOCATIONS OF PLUMBING CLEAN OUTS AND PROVIDE FIRE RATED ACCESS PANELS AT CEILING
2.)	G.C. TO PROVIDE ACCESS PANELS AS REQUIRED FOR ALL ELEMENTS (SPRINKLER, VALVES, ETC) NOT SHOWN ON THIS REFLECTED CEILING PLAN
3.)	G.C. TO PROVIDE METAL FRAMING AND BLOCKING REQUIRED FOR ALL ACCESS PANELS AND CONTROL JOINTS

LIGHTING LEGEND		
ALL LIGHTING TO BE ON DIMMER SWITCHES		
SYMBOL	KEY	TYPE
	A	EXISTING 2X4 SURFACE LED FIXTURE - RELOCATED
	B	RECESSED LED FIXTURE
	C	DECORATIVE PENDANT LED FIXTURE
	D	1X4 LED FIXTURE WITH LENS



1 REFLECTED CEILING PLAN
 1/4" = 1'-0"

