

TASTING ROOM - RISING TIDE RENOVATION
 103 FOX STREET | PORTLAND, MAINE
 HEATHER & NATHAN SANBORN



DEXTRIOUS CREATIVE

PORTLAND, ME 04102
 TRACIE REED, ARCHITECT
 NCARB, AIA, LEED AP BD+C
 traciereed@dextrouscreative.com
 207.409.0459 (cell)

STRUCTURAL ENGINEER
 AL HODSON
 RESURGENCE ENGINEERING
 61 INDIA STREET, SUITE 7
 PORTLAND, ME 04101
 AL@RESURGENCEENGINEERING.COM
 207.615.9985 (CELL)

No.	Description	Date
1	Revision 1	Date 1

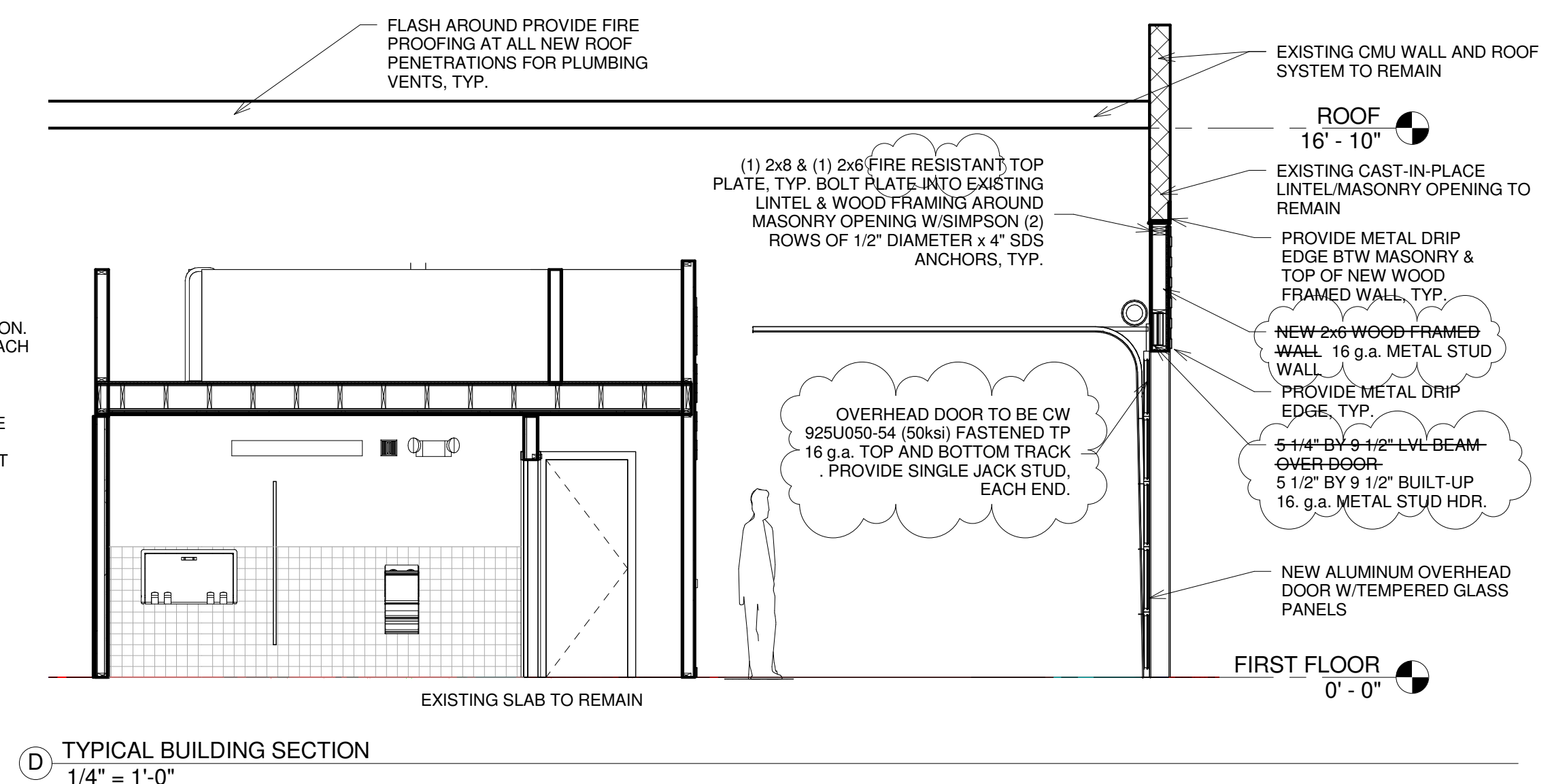
SECTION DETAILS / LIGHTING

Project number 15-24
 Date 08.27.15
 Drawn by TJR
 Checked by TJR

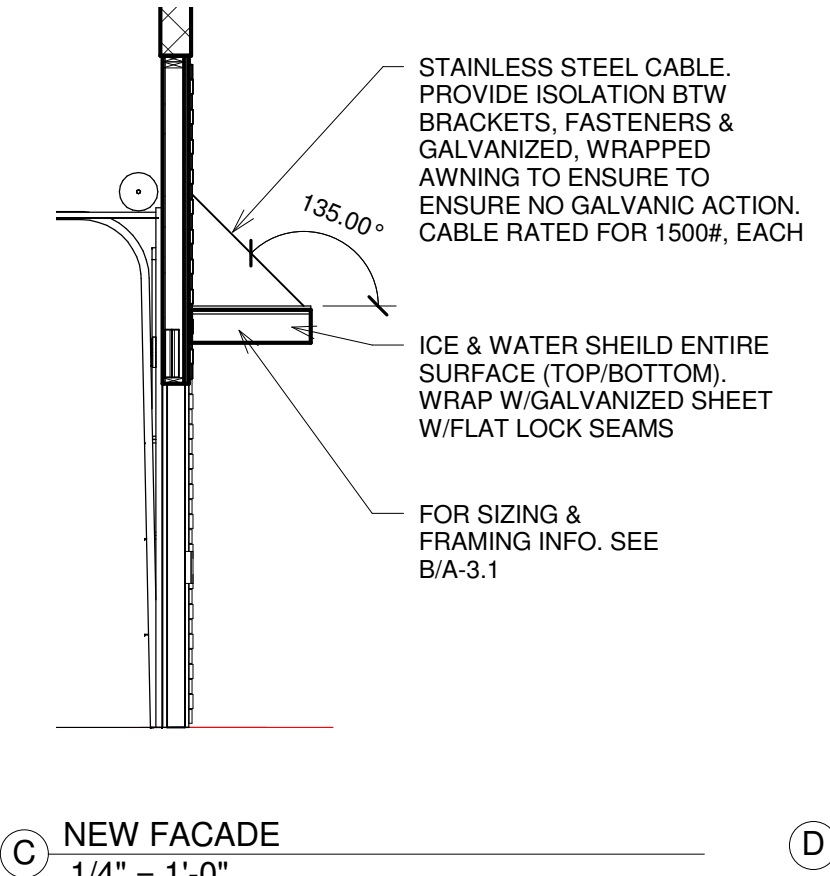
A-3.1

Scale As indicated

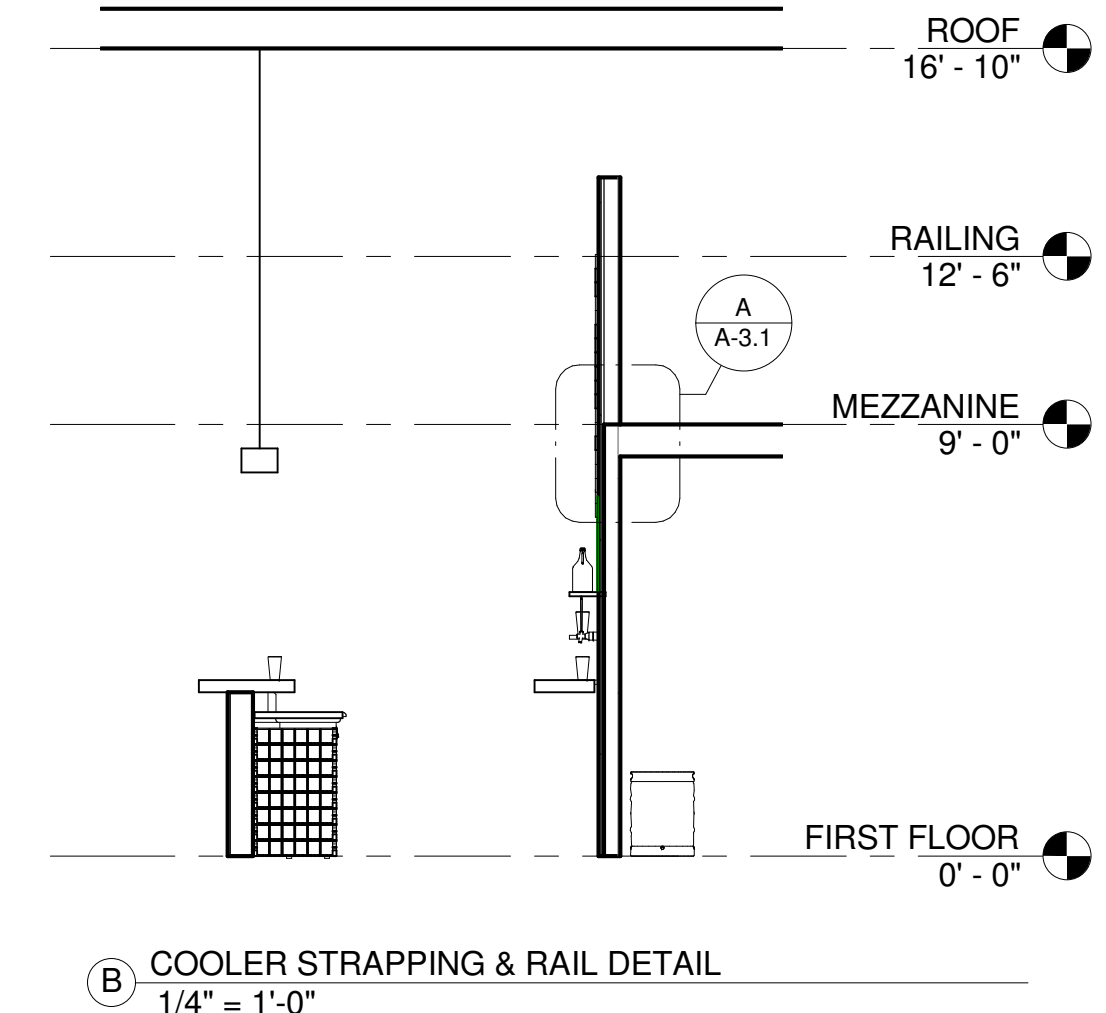
9/25/2015 2:13:38 PM



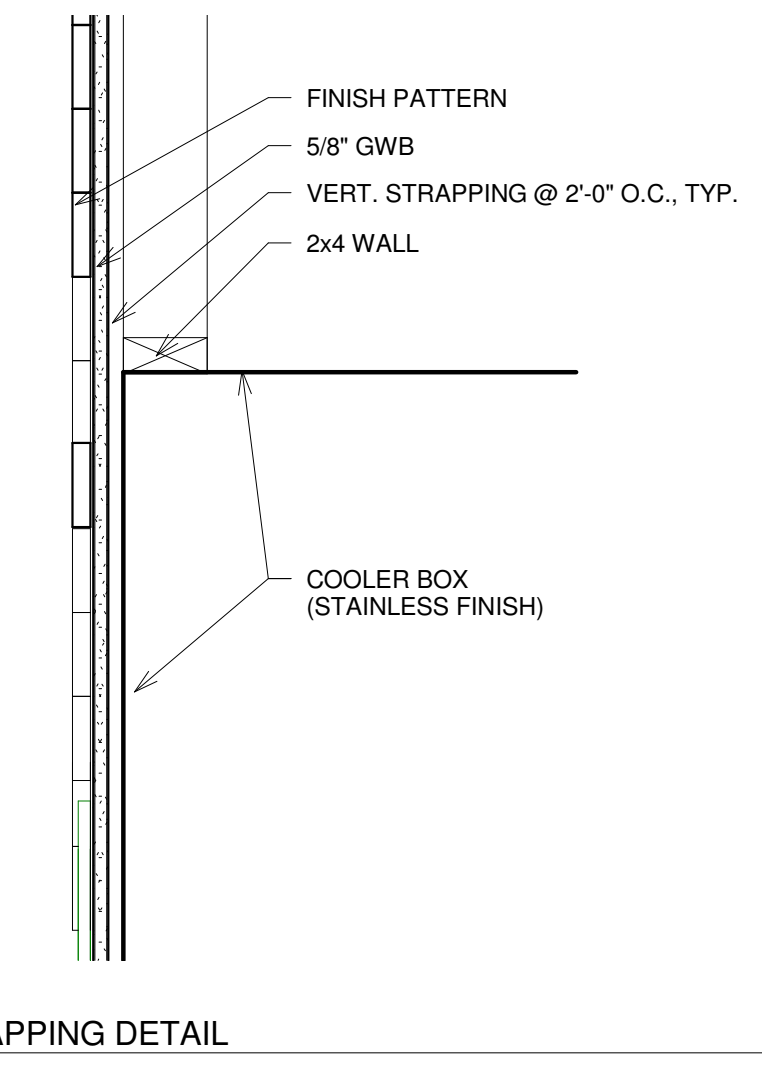
D TYPICAL BUILDING SECTION
 1/4" = 1'-0"



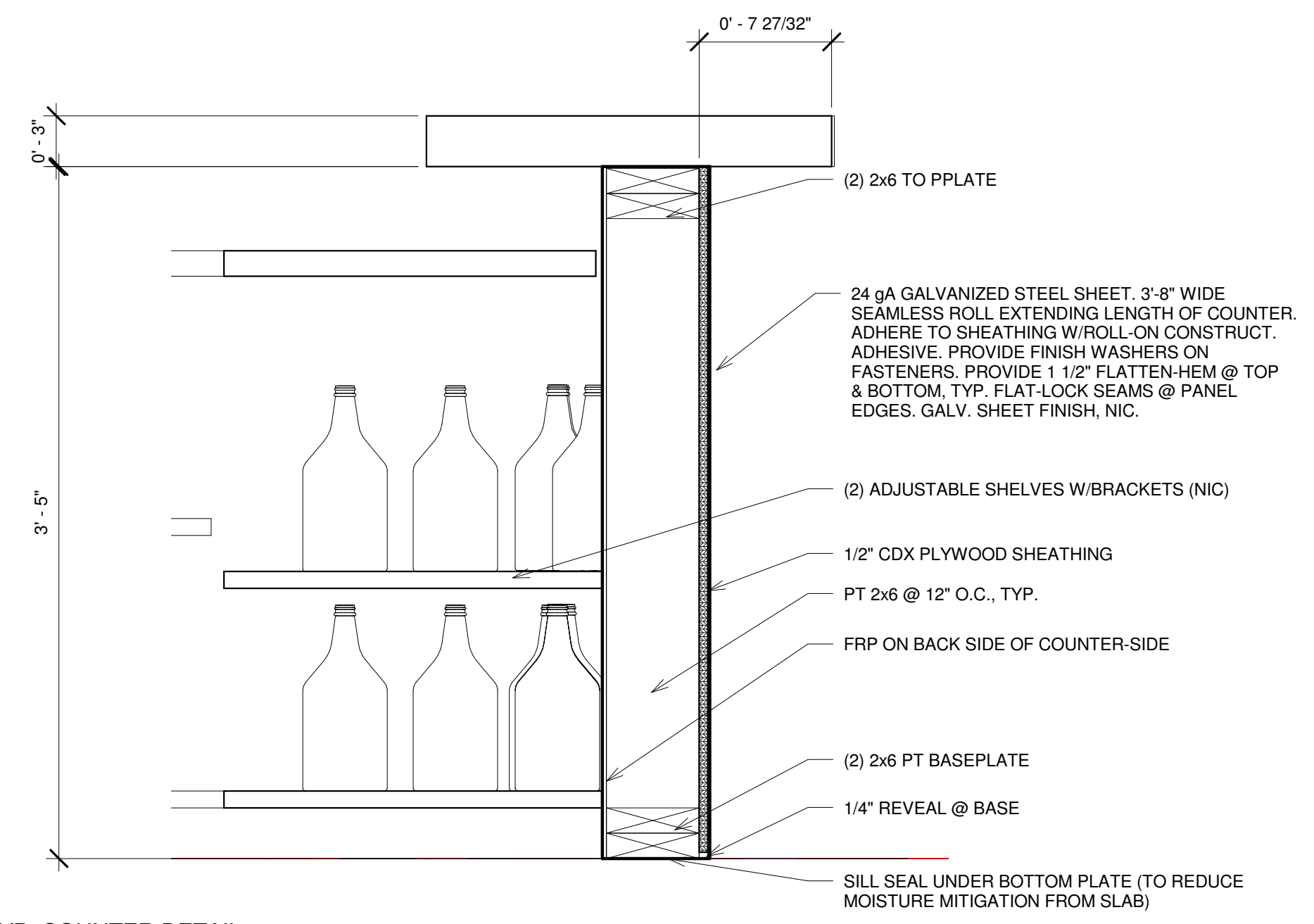
C NEW FACADE
 1/4" = 1'-0"



B COOLER STRAPPING & RAIL DETAIL
 1/4" = 1'-0"



A COOLER STRAPPING DETAIL
 1 1/2" = 1'-0"



E TYP. COUNTER DETAIL
 1 1/2" = 1'-0"