

EQUIPMENT SCHEDULE:

- A. Miele 36# capacity wet cleaning washer - steam heated
- B. Miele 45# capacity wet cleaning dryer - steam heated, roof vented
- C. Miele 12# capacity wet cleaning stacked washer & dryer pair - electric heated
- D. Forenta cuff and collar pressing machine - steam heated
- E. Veit shirt pressing machine- steam heated
- F. Veit pressing table - steam heated
- G. Veit form finisher- steam heated
- H. Veit pants topper pressing machine- steam heated
- I. Future utility press
- J. Veit spotting cabinet- steam heated
- K. Ingersoll Rand air compressor - roof vented
- L. Fulton high pressure steam boiler - roof vented
- M. Stiebel Eltron heat pump electric water heater - 80 gallon



LOCATION PLAN



EXTERIOR VIEW

GENERAL NOTES:

Zone: IL-b 1

IBC occupancy: F-1 Moderate-hazard

NFPA occupancy: General Industrial Occupancy, Low Hazard Contents

Construction Type: Type IIIA, Sprinklered

Occupant Load: 19 (1,822 sq.ft. @ 100 sq.ft./person), 3 (900 sq.ft. storage @ 300 sq.ft./person), TOTAL 22

One exit required, <49 occupants & 100' travel distance w/ sprinkler, Table 1021.2

© 2011 Kevin Moquin, AIA
 Maine Licensed Architect
 (207) 935-0016
 kmoquinarchitect@gmail.com

COVER PAGE

PERMIT SET
 Revisions:
 1 - Update Use and Construction Type

Portland's Greener Cleaner
 Storefront & Interior Fit Out
 1115 Fox Street, Portland, ME

January 9 2012

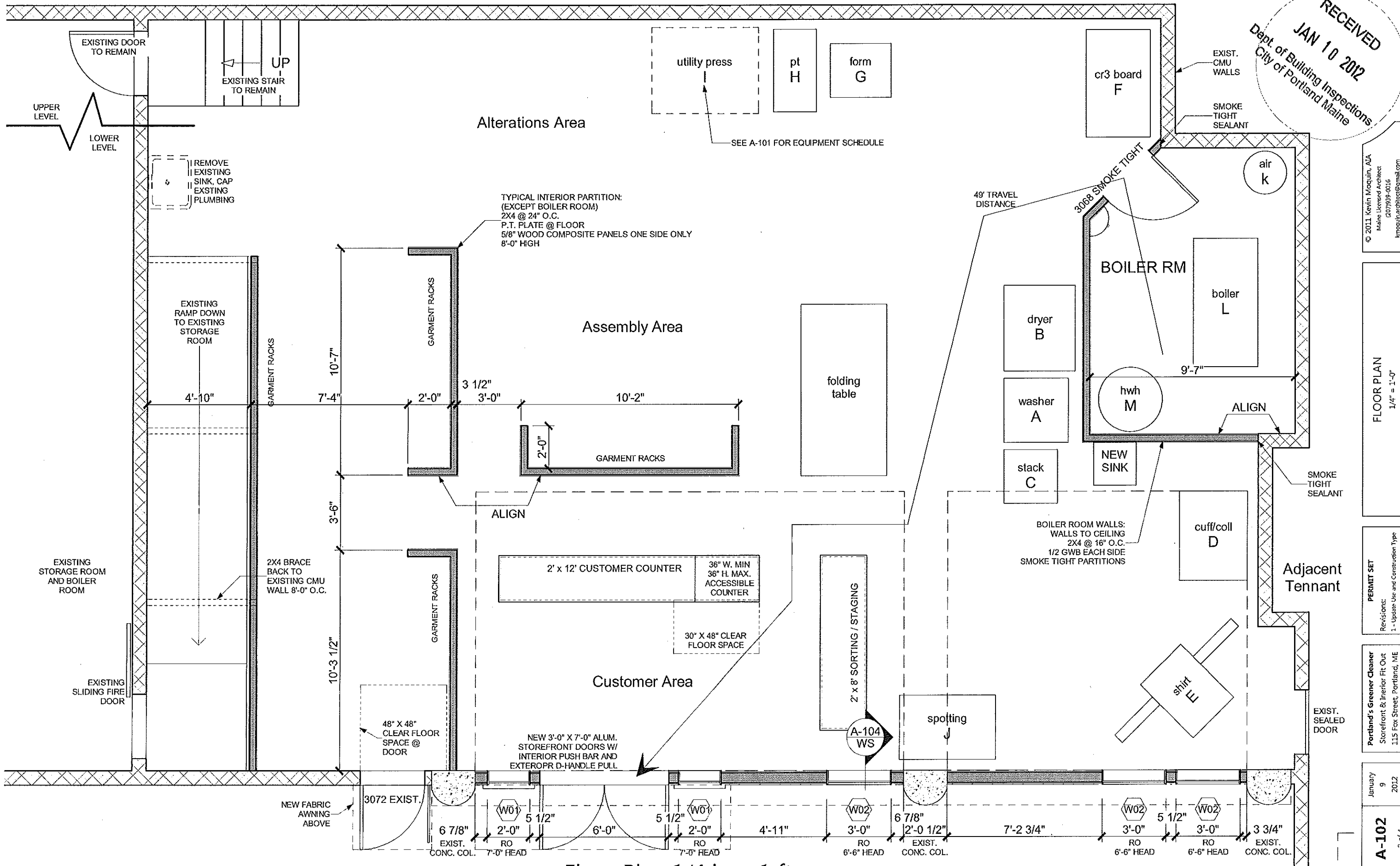
A-101
 1 of 4

RECEIVED
 JAN 10 2012
 Dept. of Building Inspections
 City of Portland Maine

REVISION
 RECEIVED
 JAN 10 2012
 Dept. of Building Inspections
 City of Portland Maine

Adjacent Tennant

RECEIVED
JAN 10 2012
Dept. of Building Inspections
City of Portland Maine



© 2011 Kevin Moquin, AIA
Maine Licensed Architect
207939-0016
kmoquin.architect@gmail.com

FLOOR PLAN
1/4" = 1'-0"

PERMIT SET
Revisions:
1 - Update Use and Construction Type

Portland's Greener Cleaner
Storefront & Interior Fit Out
115 Fox Street, Portland, ME

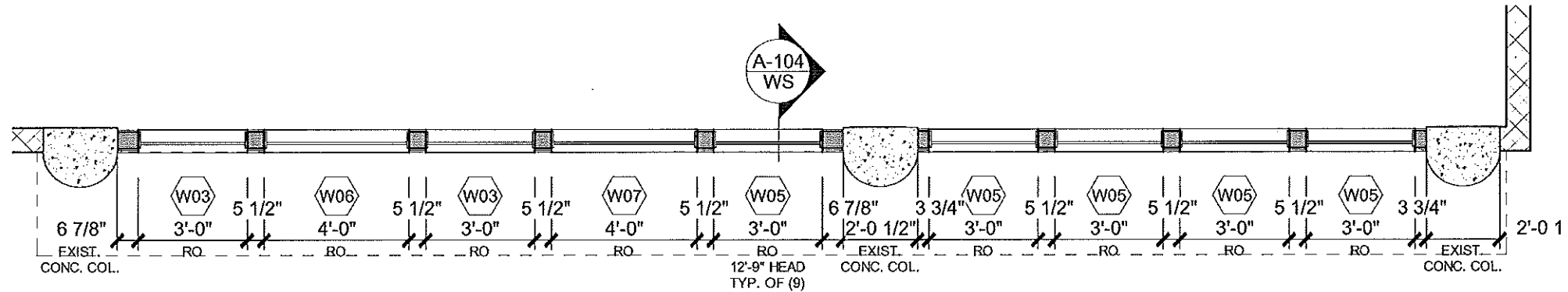
January 9 2012
A-102
2 of 4

Floor Plan 1/4 in = 1 ft

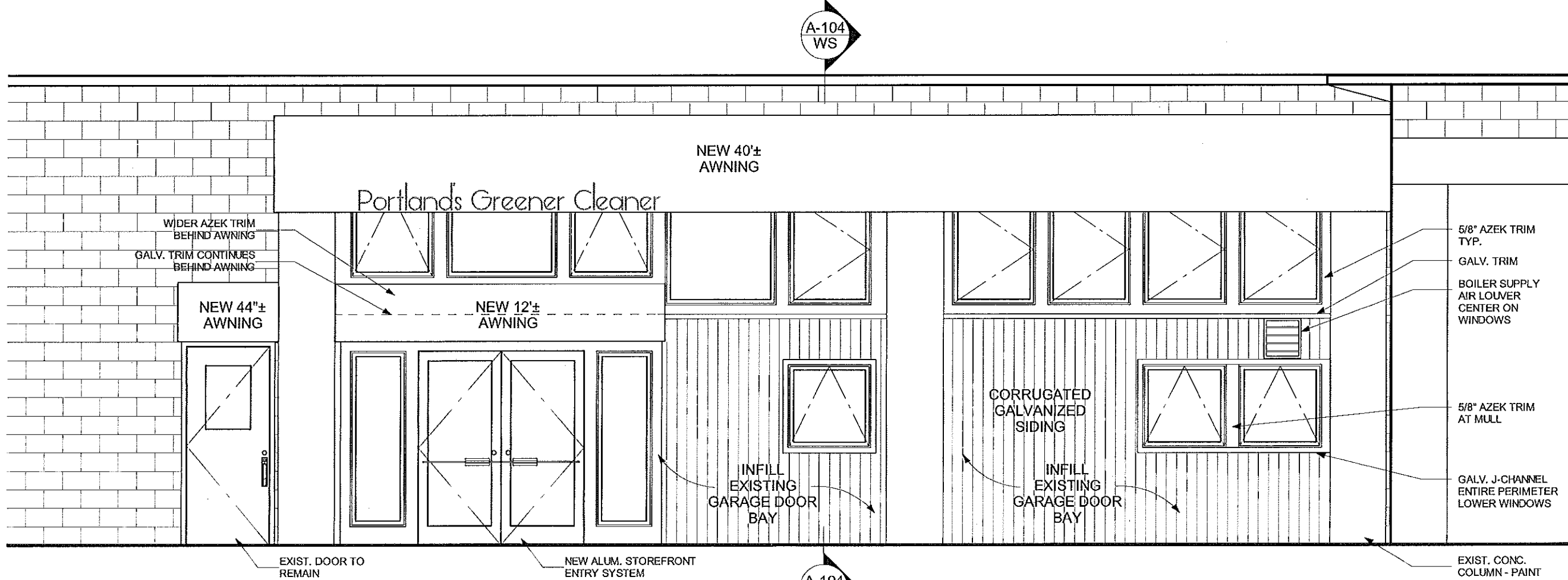
WINDOW SCHEDULE											
NUMBER	QTY	FLOOR	WIDTH	HEIGHT	TOP	R/O	TEMPERED	DESCRIPTION	CODE	MANUFACTURER	COMMENTS
W01	2	1	24"	76"	84"	24"X76"	YES	FIXED GLASS	CF2476	PARADIGM	
W02	3	1	36"	36"	78"	36"X36"		AWNING	A3636	PARADIGM	
W03	2	2	36"	36"	53"	36"X36"		AWNING	A3636	PARADIGM	
W05	5	2	36"	48"	53"	36"X48"		SNGL CASEMENT-HR	C3648	PARADIGM	
W06	1	2	48"	36"	53"	48"X36"		FIXED GLASS	CF4836	PARADIGM	
W07	1	2	48"	48"	53"	48"X48"		FIXED GLASS	CF4848	PARADIGM	

PARADIGM WINDOW NOTES
CASEMENT, AWNING, AND FIXED UNITS AS SCHEDULED, COLOR: EVEREST, STANDARD LOW-E GLAZING, U VALUE = .30, POLE OPERATOR FOR UPPER UNITS

RECEIVED
JAN 10 2012
Dept. of Building Inspections
City of Portland Maine



Upper Windows Plan 1/4 in = 1 ft



Elevation 1/4 in = 1 ft

© 2011 Kevin Moquin, AIA
Maine Licensed Architect
207939-0016
kmoquin@architect@gmail.com

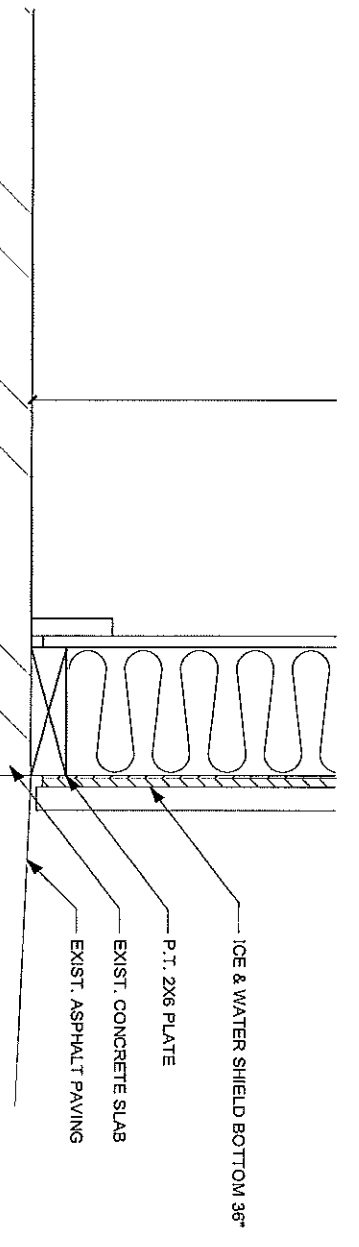
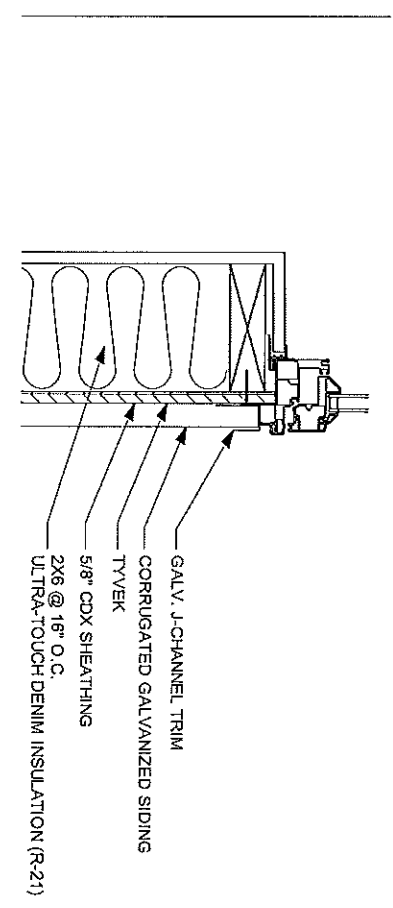
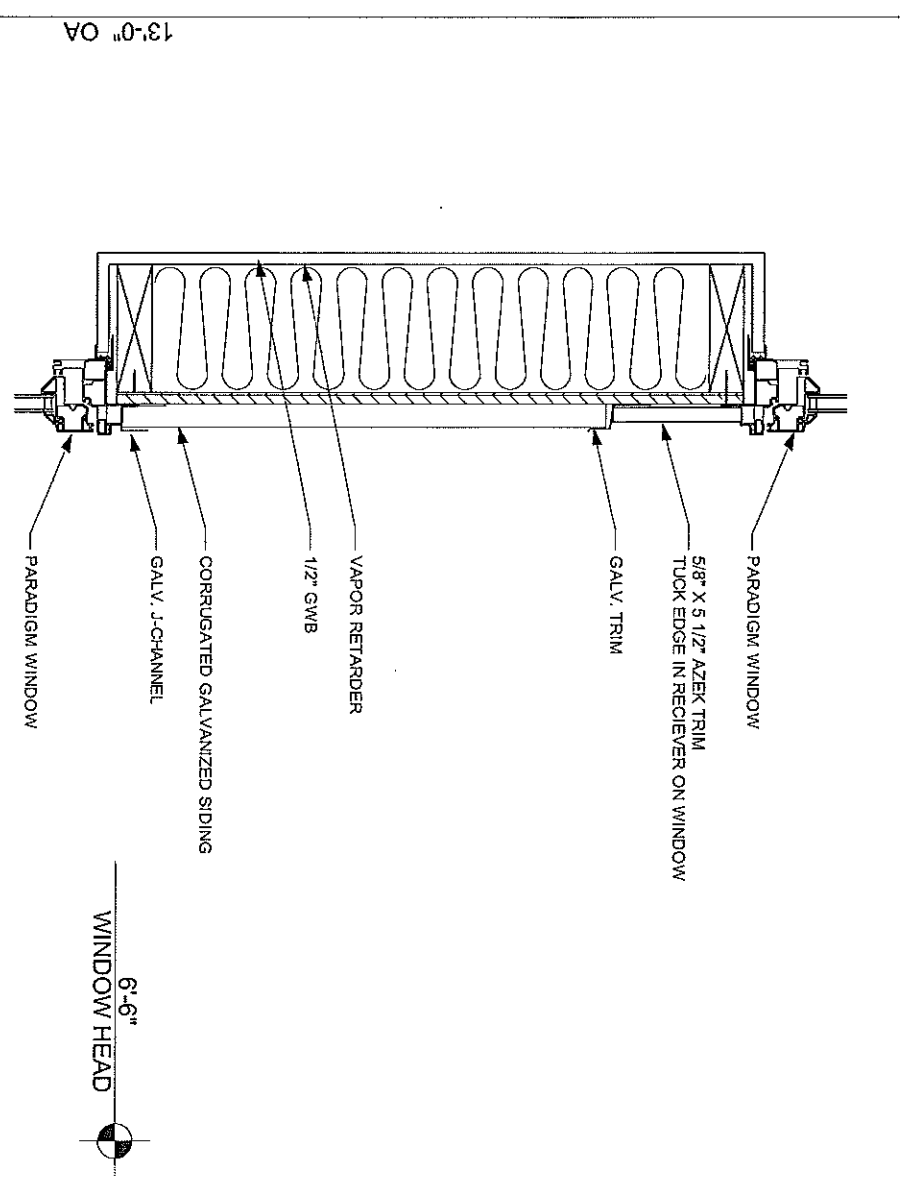
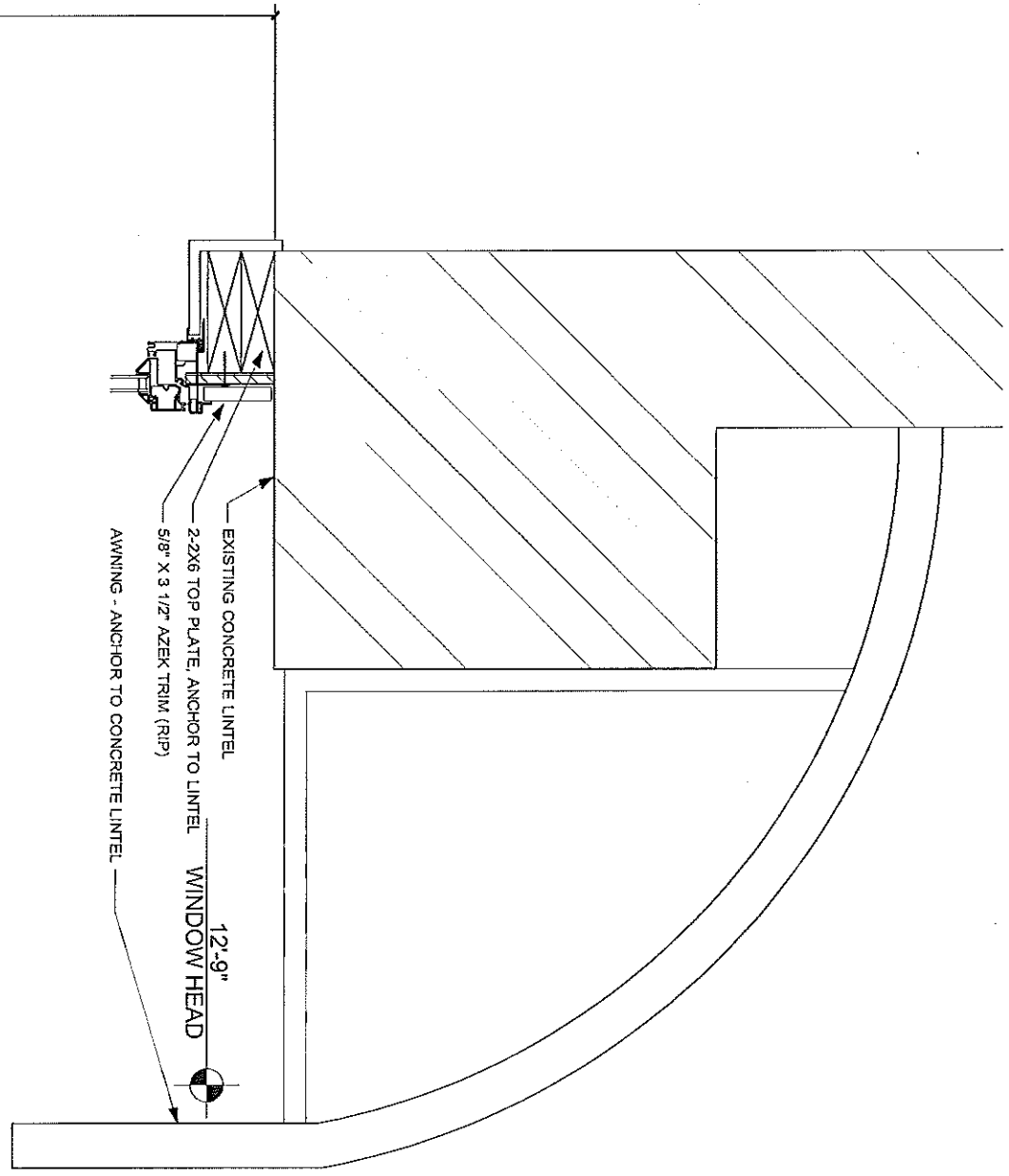
ELEVATION & SCHEDULES
1/4" = 1'-0"

PERMIT SET
Revisions:
1 - Update Use and Construction Type

Portland's Greener Cleaner
Storefront & Interior Fit Out
115 Fox Street, Portland, ME

January 9 2012

A-103
3 of 4



A-104
4 of 4

January 9 2012
Portland's Greener Cleaner
Storefront & Interior Fit Out
115 Fox Street, Portland, ME

PERMIT SET
Revisions:
1 - Update Use and Construction Type

WALL SECTION 1
1 1/2" = 1'-0"

© 2011 Kevin Moquin, AIA
Maine Licensed Architect
(207)939-4016
kmoquinarchitect@gmail.com

RECEIVED
JAN 10 2012
Dept. of Building Inspections
City of Portland-Maine