

EQUIPMENT SCHEDULE:

- A. Miele 36# capacity wet cleaning washer - steam heated
- B. Miele 45# capacity wet cleaning dryer - stem heated, roof vented
- C. Miele 12# capacity wet cleaning stacked washer & dryer pair - electric heated
- D. Forenta cuff and collar pressing machine - steam heated
- E. Veit shirt pressing machine- steam heated
- F. Veit pressing table - steam heated
- G. Veit form finisher- steam heated
- H. Veit pants topper pressing machine- steam heated
- I. Future utility press
- J. Veit spotting cabinet- steam heated
- K. Ingersoll Rand air compressor - roof vented
- L. Fulton high pressure steam boiler - roof vented
- M. Stiebel Eltron heat pump electric water heater - 80 gallon



GENERAL NOTES:

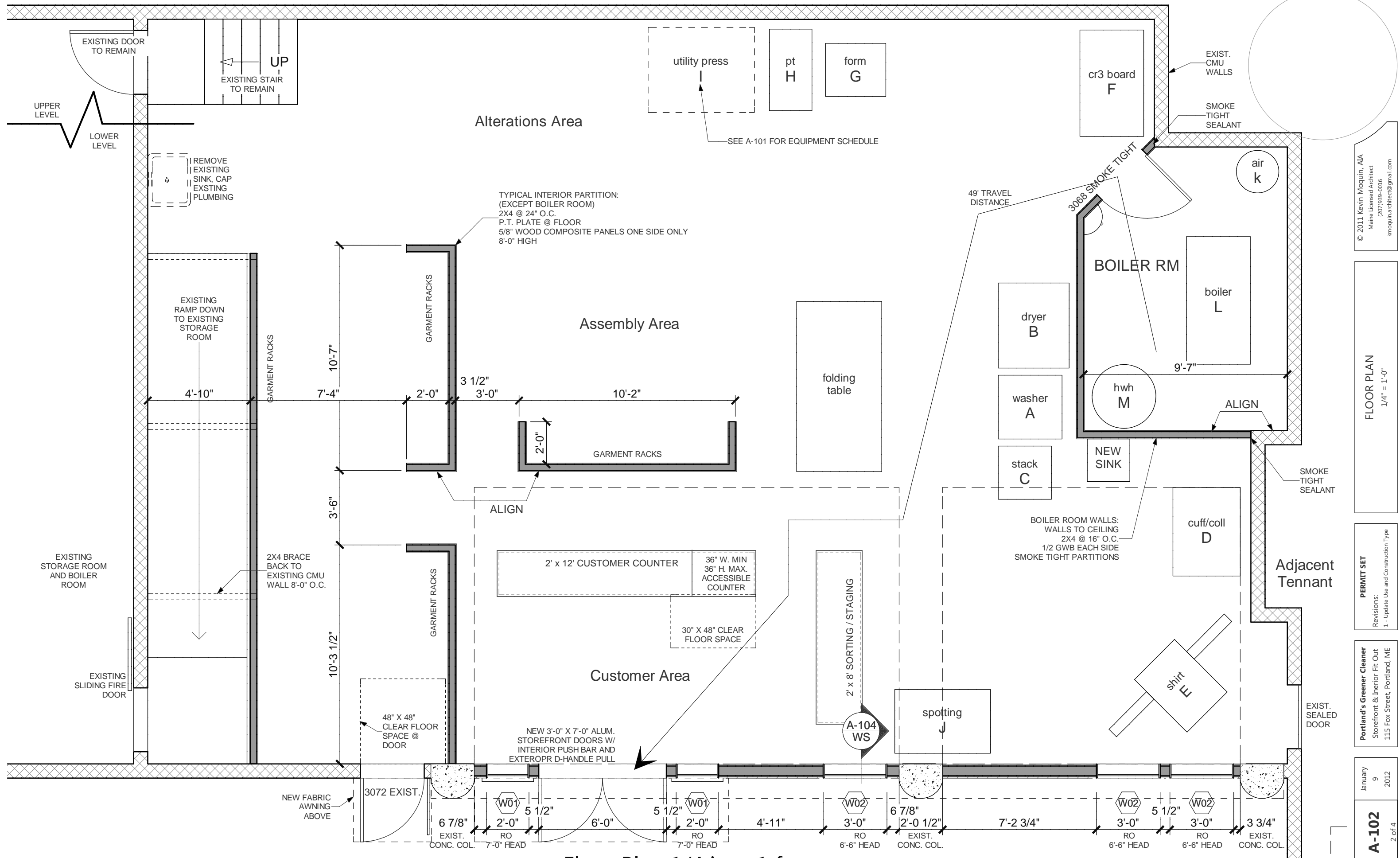
Zone: IL-b

IBC occupancy: F-1 Moderate-hazard
 NFPA occupancy: General Industrial Occupancy, Low Hazard Contents

Construction Type: Type IIIA , Sprinklered

Occupant Load: 19 (1,822 sq.ft. @ 100 sq.ft./person), 3 (900 sq.ft. storage @ 300 sq.ft./person), TOTAL 22
 One exit required, <49 occupants & 100' travel distance w/ sprinkler, Table 1021.2

1



© 2011 Kevin Moquin, AIA
 Maine Licensed Architect
 (207)939-0016
 kmoquin.architect@gmail.com

FLOOR PLAN
 1/4" = 1'-0"

PERMIT SET
 Revisions:
 1 - Update Use and Construction Type

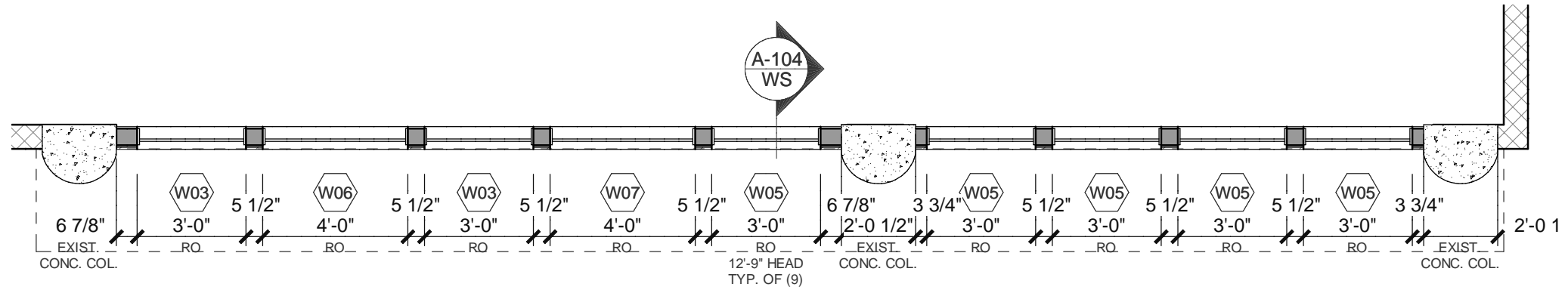
Portland's Greener Cleaner
 Storefront & Interior Fit Out
 115 Fox Street, Portland, ME

January 9 2012
A-102
 2 of 4

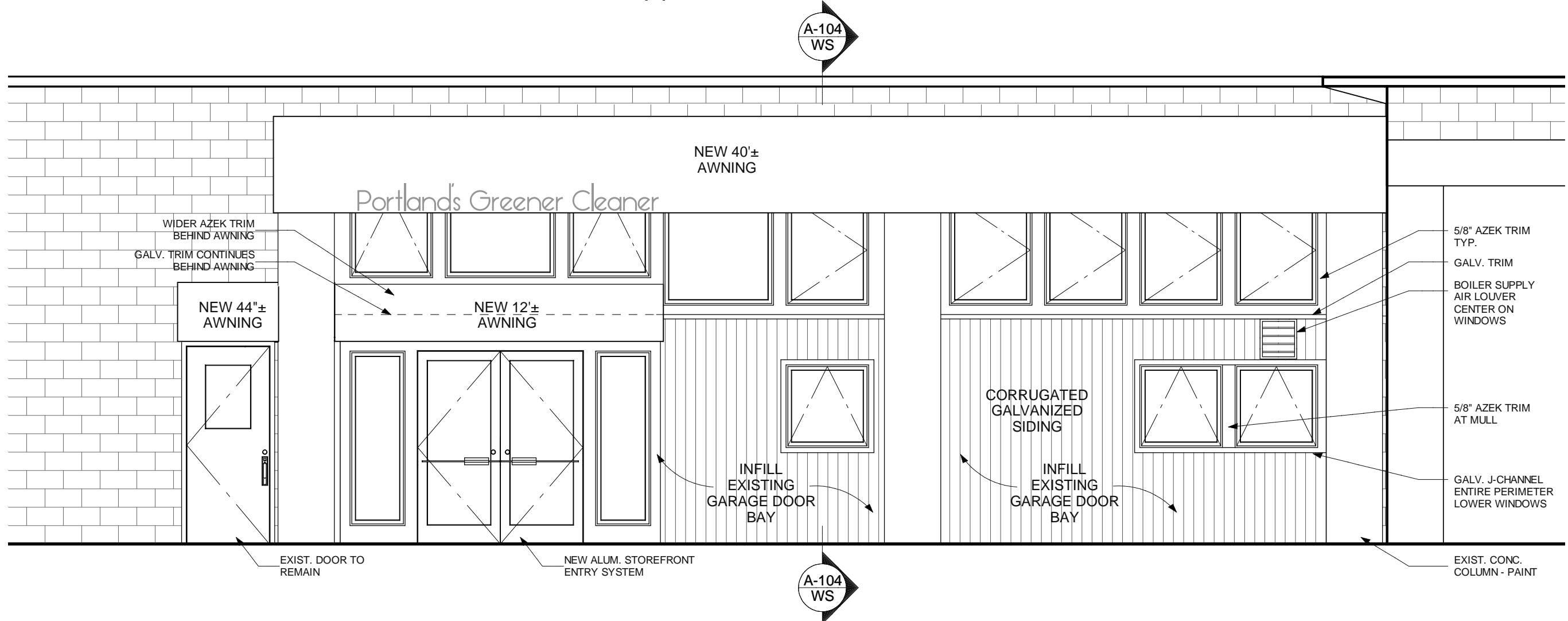
Floor Plan 1/4 in = 1 ft

| WINDOW SCHEDULE | | | | | | | | | | | |
|-----------------|-----|-------|-------|--------|-----|---------|----------|------------------|--------|--------------|----------|
| NUMBER | QTY | FLOOR | WIDTH | HEIGHT | TOP | R/O | TEMPERED | DESCRIPTION | CODE | MANUFACTURER | COMMENTS |
| W01 | 2 | 1 | 24" | 76" | 84" | 24"X76" | YES | FIXED GLASS | CF2476 | PARADIGM | |
| W02 | 3 | 1 | 36" | 36" | 78" | 36"X36" | | AWNING | A3636 | PARADIGM | |
| W03 | 2 | 2 | 36" | 36" | 53" | 36"X36" | | AWNING | A3636 | PARADIGM | |
| W05 | 5 | 2 | 36" | 48" | 53" | 36"X48" | | SNGL CASEMENT-HR | C3648 | PARADIGM | |
| W06 | 1 | 2 | 48" | 36" | 53" | 48"X36" | | FIXED GLASS | CF4836 | PARADIGM | |
| W07 | 1 | 2 | 48" | 48" | 53" | 48"X48" | | FIXED GLASS | CF4848 | PARADIGM | |

PARADIGM WINDOW NOTES
CASEMENT, AWNING, AND FIXED UNITS AS SCHEDULED, COLOR: EVEREST, STANDARD LOW-E GLAZING, U VALUE = .30, POLE OPERATOR FOR UPPER UNITS



Upper Windows Plan 1/4 in = 1 ft



Elevation 1/4 in = 1 ft

© 2011 Kevin Moquin, AIA
Maine Licensed Architect
(207)939-0016
kmoquin.architect@gmail.com

ELEVATION & SCHEDULES
1/4" = 1'-0"

PERMIT SET
Revisions:
1 - Update Use and Construction Type

Portland's Greener Cleaner
Storefront & Interior Fit Out
115 Fox Street, Portland, ME

January
9
2012

A-103
3 of 4

