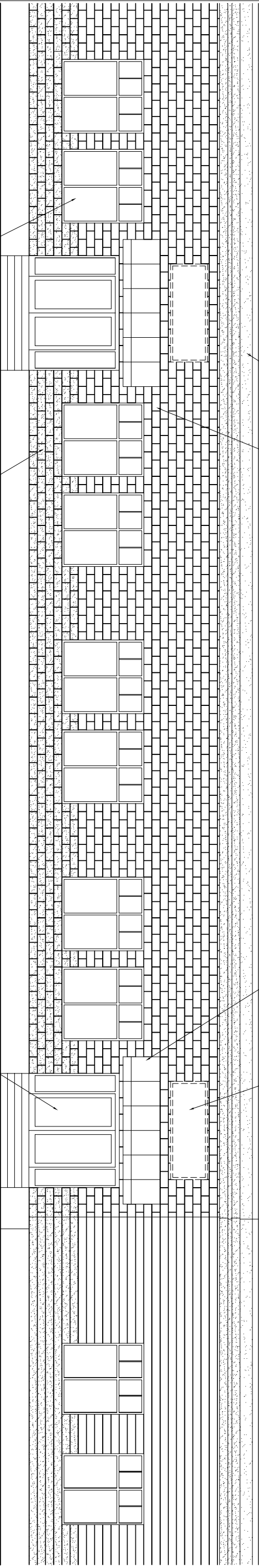


A OVERALL FRONT ELEVATION

REFERENCED FROM:

SCALE: 1/8" = 1'-0"



EFS CORNICE

NEW PAINT FINISHES - MAIN BODY COLOR

ANNING ASSEMBLY

PROPOSED SUN LOCATION

ALUMINUM STROGFRONT WINDOW AND DOOR ASSEMBLIES WITH 1" LOW E GLAZING

NEW PAINT FINISHES - ACCENT MANSFOT COLOR

ALUMINUM STROGFRONT WINDOW AND DOOR ASSEMBLIES WITH 1" LOW E GLAZING

B ENLARGED PARTIAL FRONT ELEVATION

REFERENCED FROM:

SCALE: 1/4" = 1'-0"



454 Gunterland Avenue
Portland, ME 04101
Phone: (207) 774-4441
Fax: (207) 774-4016
www.CWSarch.com

INTERIOR FIT-UP FOR PORTLAND MATTRESS BUILDERS & MAINLY SHADES
281 MARGINAL WAY
PORTLAND, MAINE
04101

INVESTMENT ASSOC. INC.
183 MIDDLE STREET
PORTLAND, MAINE
04101

REVISIONS:	
Description:	Date:

Drawing Title:
EXTERIOR ELEVATIONS
Scale: AS NOTED
Date: progress 01/03/05
CWS Proj. No.: 04422.mvr

Drawing Number:
A3.1