

REMOVALS NOTES:

- 1 REMOVE EXISTING DOUBLE DOORS AND DOOR FRAME ASSEMBLY COMPLETE. RELOCATE AS INDICATED WITHIN THE NEW WORK PLANS.
- 2 REMOVE EXISTING OVERHEAD DOOR ASSEMBLY COMPLETE. PREPARE OPENING TO ALLOW FOR INSTALLATION OF NEW WINDOW ASSEMBLY.
- 3 REMOVE EXISTING WINDOW AND WINDOW FRAME ASSEMBLY COMPLETE. INFILL OPENING TO MATCH EXISTING CMU WALL ASSEMBLY.
- 4 REMOVE EXISTING STEEL COLUMN.
- 5 REMOVE EXISTING DOUBLE DOORS AND DOOR FRAME ASSEMBLY COMPLETE. INFILL OPENING TO MATCH EXISTING WALL.
- 6 REMOVE EXISTING STEEL DOOR AND DOOR FRAME ASSEMBLY COMPLETE.
- 7 REMOVE EXISTING ALUMINUM STOREFRONT DOOR AND WINDOW ASSEMBLY COMPLETE.
- 8 REMOVE PORTION OF EXISTING BLOCK WALL AS REQUIRED TO ALLOW FOR INSTALLATION OF NEW WINDOW OR DOOR ASSEMBLY.
- 9 REMOVE PORTION OF EXISTING GAMBREL TO ALLOW FOR INSTALLATION OF NEW STAIR AND HANDRAIL ASSEMBLY.
- 10 REMOVE EXISTING OVERHEAD DOOR ASSEMBLY COMPLETE. INFILL OPENING TO MATCH EXISTING WALL.
- 11 REMOVE EXISTING WINDOW AND WINDOW FRAME ASSEMBLY COMPLETE. PREPARE OPENING TO ALLOW FOR INSTALLATION OF NEW WINDOW ASSEMBLY IN EXISTING OPENING.

A REMOVALS PLAN

SCALE: 1/8" = 1'-0"

ISSUED FOR PERM

CWS Architects
 454 Canton Road
 Portland, ME 04101
 Phone: (207) 774-4441
 Fax: (207) 774-4016
 www.cwsarch.com

**INTERIOR FIT-UPS FOR PORTLAND
 YATRESS BUILDERS &
 MAINLY SHADES**
 281 MARGINAL WAY
 PORTLAND, MAINE
 04101

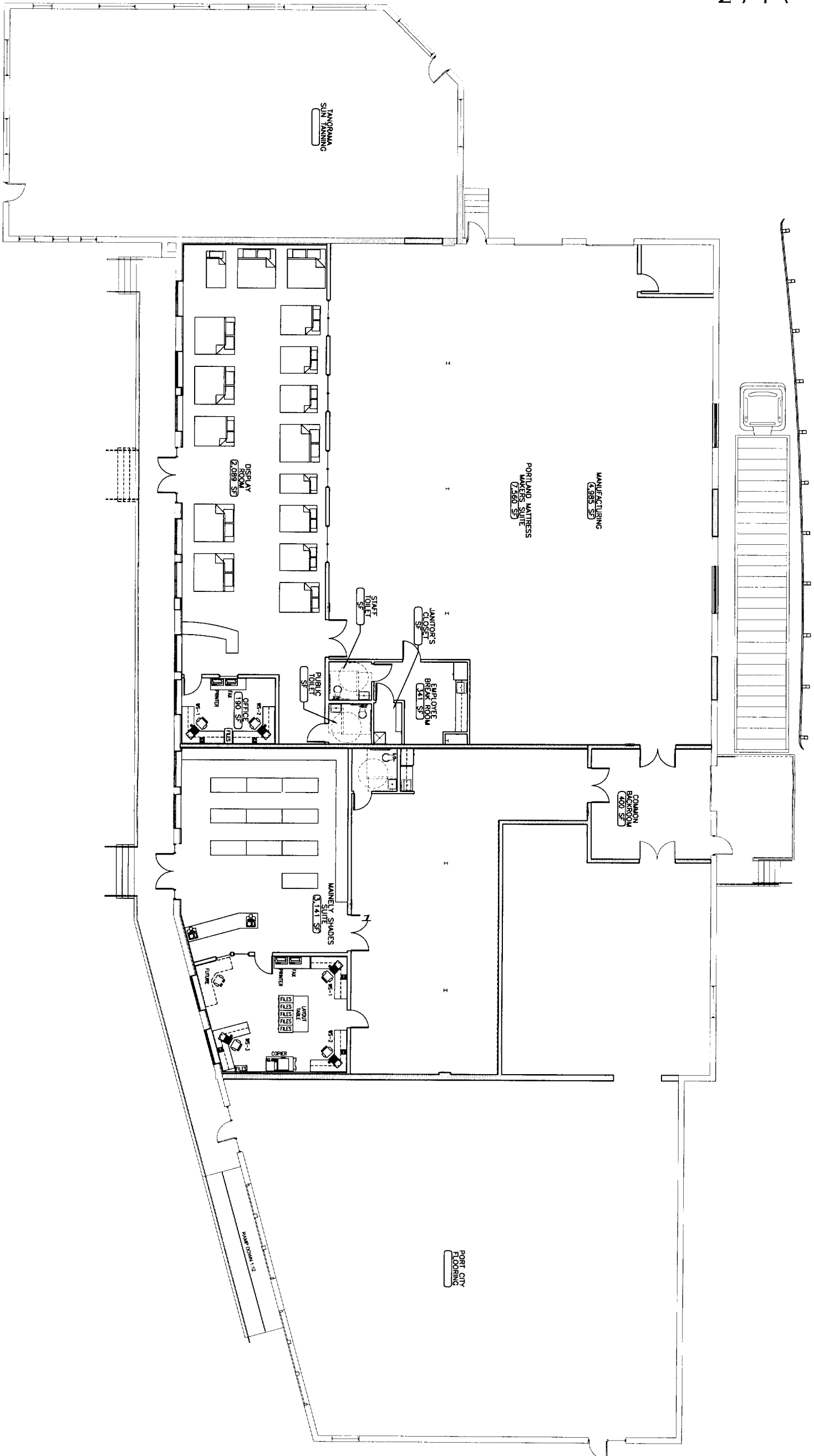
**INVESTMENT
 ASSOC. INC.**
 183 MIDDLE STREET
 PORTLAND, MAINE
 04101

REVISIONS	
Description	Date

Drawing Title
**REMOVALS
 PLAN**

Scale: 1/8" = 1'-0"
 Date: progress 01/03/05
 CWS Proj. No.: 04422 mwr

Drawing Number
DA1.1



FOR COORDINATION PURPOSES ONLY

A OVERALL FLOOR PLAN
REFERENCED FROM:

Drawing Title	
OVERALL FLOOR PLAN	
Scale	1/8" = 1'-0"
Date	progress 01/03/05
CWS Proj No	04422nwr

REVISIONS	
Description	Date

Owner
INVESTMENT ASSOC. INC.
 163 MIDDLE STREET
 PORTLAND MAINE 04101

INTERIOR FIT-UPS FOR PORTLAND MATTRESS BUILDERS 6 MAINLY SHADES
 281 MARGINAL WAY
 PORTLAND MAINE 04101

454 Cumberland Avenue
 Portland, ME 04101
 Phone: (207) 774-4444
 Fax: (207) 774-4016
 www.CWSarch.com

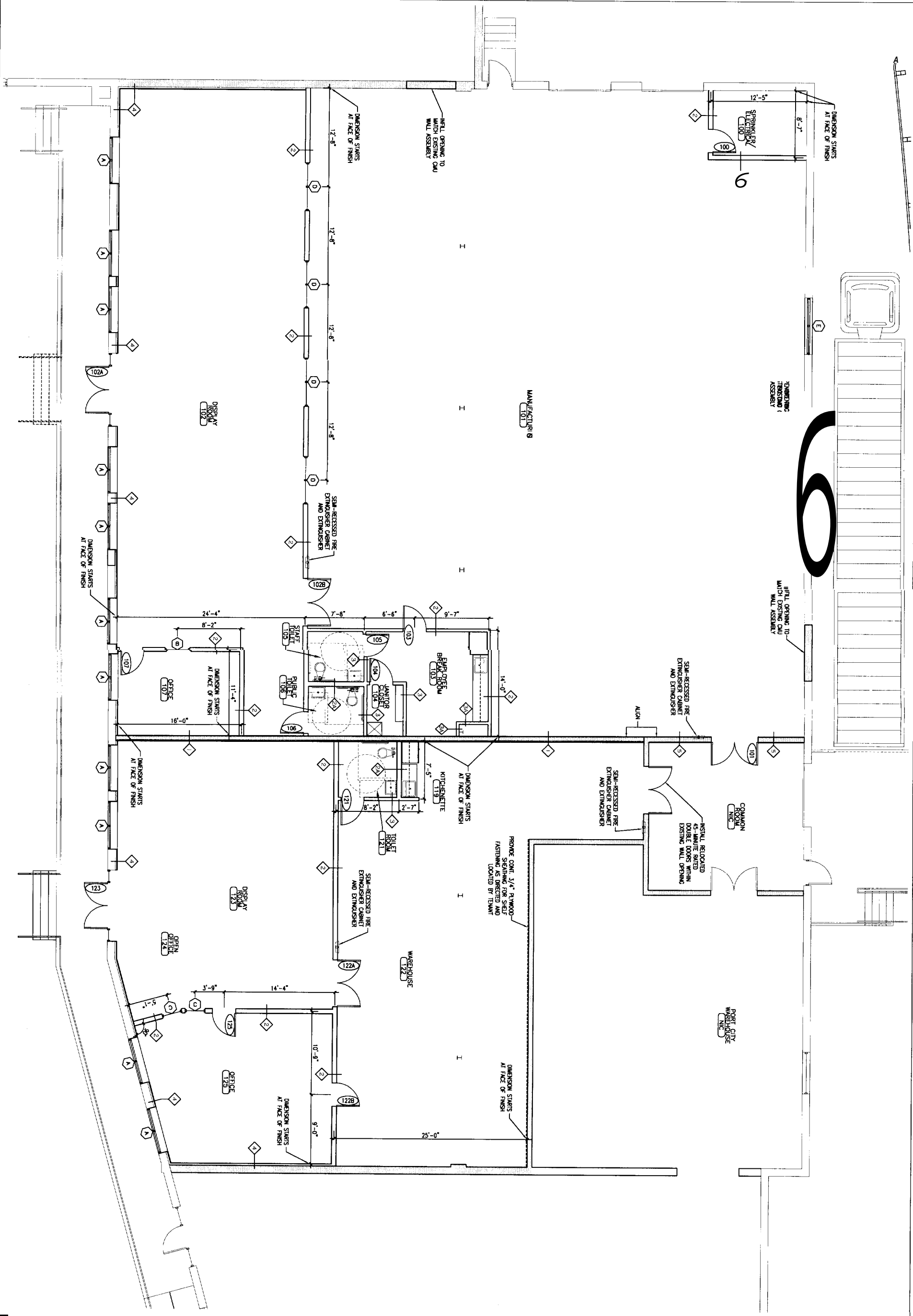


A1.1
Drawing Number

1-3-11
 03/03/2005

A
FLOOR PLAN

SCALE: 3/16" = 1'-0"



A1.2	Drawing Title	PROPOSED FLOOR PLAN	
	Scale	3/16" = 1'-0"	
Date	progress 01/03/05		CWSProl No
CWSProl No	04422mwr		Drawing Number
REVISIONS			
Description	Date		
Owner			
INVESTMENT ASSOC. INC. 183 MIDDLE STREET PORTLAND MAINE 04101		INTERIOR FIT-UPS FOR PORTLAND MATTRESS BUILDERS 6 MAWELY SHADES 281 MARGINAL WAY PORTLAND MAINE 04101	
454 Cumberland Avenue Portland, ME 04101 Phone: (207) 774-4444 Fax: (207) 774-4016 www.CWSArch.com			

SCALE: 3/16" = 1'-0"

SPRINKLER
ELECTRICAL
OPEN TO
STRUCTURE ABOVE

MANUFACTURING
ELECTRICAL
OPEN TO
STRUCTURE ABOVE

COMMON
ROOM
NIC

WAREHOUSE
ELECTRICAL
12'-0" AFF.

OFFICE
ELECTRICAL
10'-0" AFF.

OFFICE
ELECTRICAL
10'-0" AFF.

OFFICE
ELECTRICAL
10'-0" AFF.

DISPLAY
ROOM
ELECTRICAL
10'-0" AFF.

STAFF
CLOSET
ELECTRICAL
8'-0" AFF.

PUBLIC
CLOSET
ELECTRICAL
8'-0" AFF.

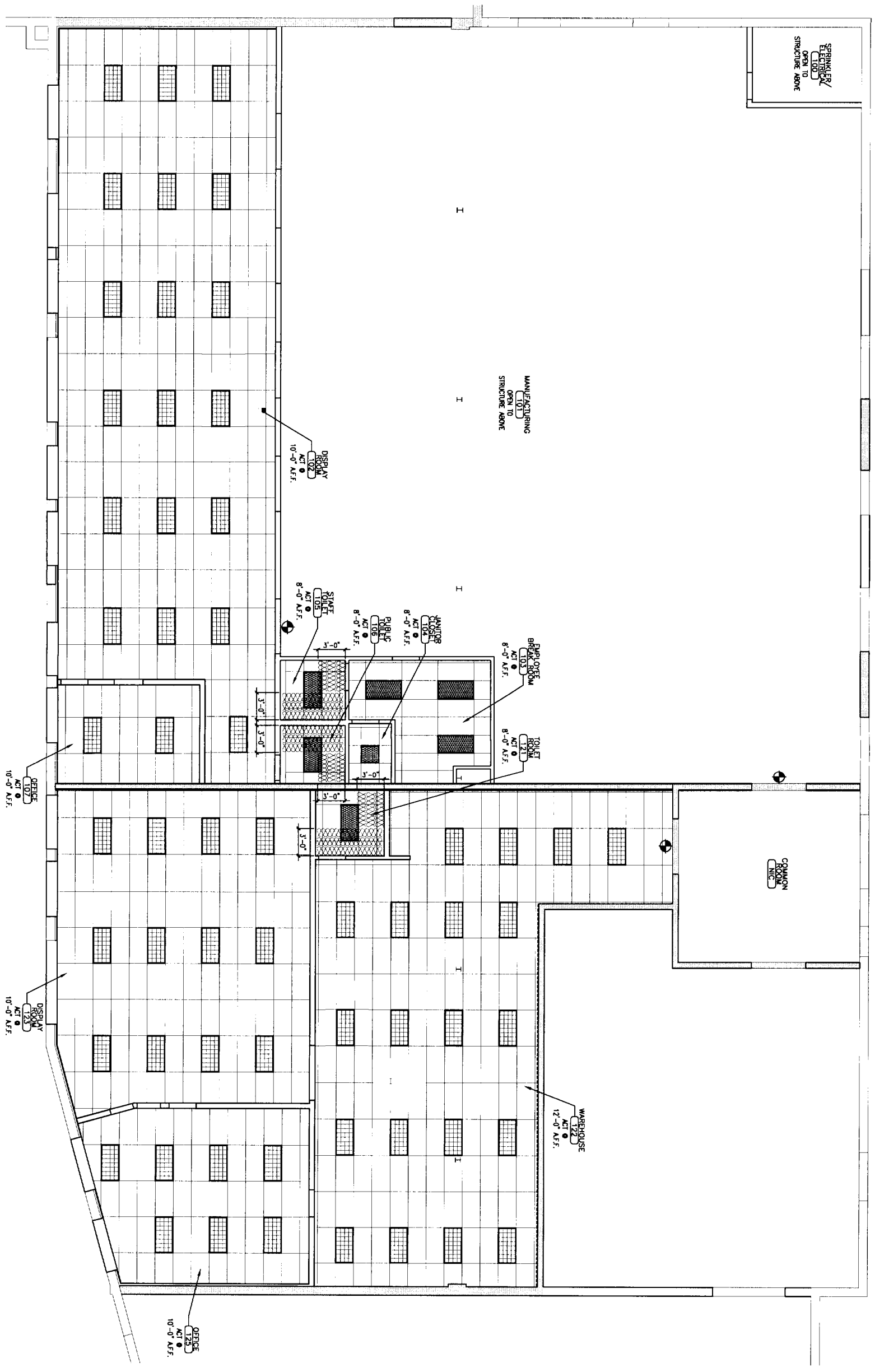
JANITOR
CLOSET
ELECTRICAL
8'-0" AFF.

EMPLOYEE
CLOSET
ELECTRICAL
8'-0" AFF.

TOILET
ELECTRICAL
8'-0" AFF.

ELECTRICAL LEGEND

- 2x4 LAY-IN FIXTURE W/ PRISMATIC LENS - REF. ELECTRICAL
- 2x2 LAY-IN FIXTURE W/ PRISMATIC LENS - REF. ELECTRICAL
- 2x4 LAY-IN PARABOLIC FIXTURE - REF. ELECTRICAL
- 8' FLUORESCENT FIXTURE - REF. ELECTRICAL
- ⊠ RETURN AIR DEVICE - REF. MECHANICAL
- ⊞ SUPPLY AIR DEVICE - REF. MECHANICAL
- ⊙ EXIT LIGHT - REF. ELECTRICAL



A REFLECTED CEILING PLAN
SCALE: 5/8" = 1'-0"

CWS Architects
434 Cornwell Avenue
Portland, ME 04101
Phone: (207) 774-4441
Fax: (207) 774-4216
www.CWSarch.com

INTERIOR FIT-UPS FOR PORTLAND MATTRESS BUILDERS & MAINLY SHADES
28 MARGINAL WAY
PORTLAND, MAINE
04101

INVESTMENT ASSOC. INC.
183 MIDDLE STREET
PORTLAND, MAINE
04101

REVISIONS	
Description	Date

Drawing Title
REFLECTED CEILING PLAN
Scale: 5/16" = 1'-0"
Date: progress 01/03/05
CWS Proj. No.: 04422.nwr

Drawing Number
A2.1