

Architect

I have prepared this plan in accordance with the provisions of the Building Code of the City of Chicago.

I have prepared this plan in accordance with the provisions of the Building Code of the City of Chicago.

I have prepared this plan in accordance with the provisions of the Building Code of the City of Chicago.

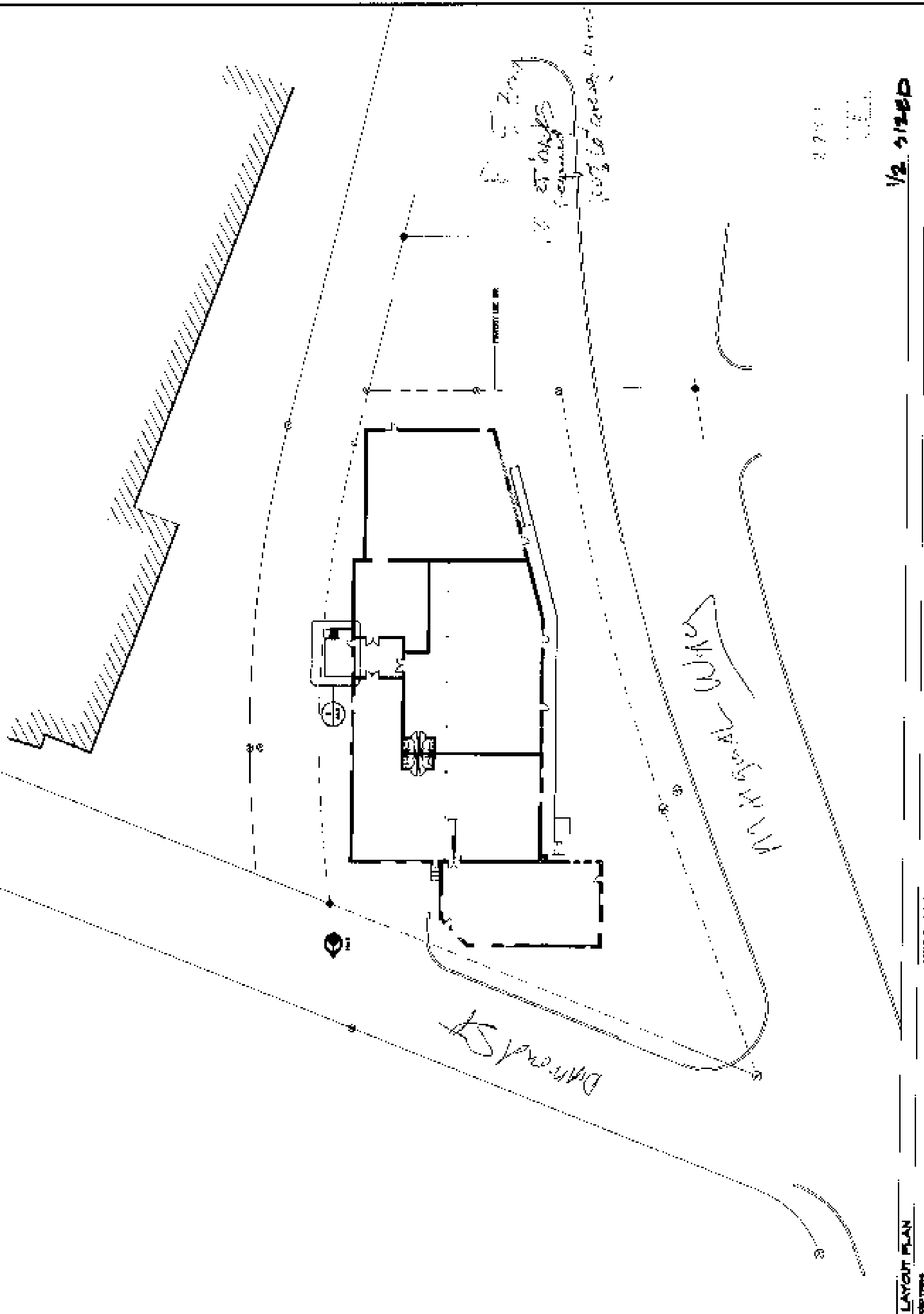
LOADING DOCK SERVICE
TO BE INSTALLED PER
THE CITY OF CHICAGO

CONTRACTOR
FOR THE CITY OF CHICAGO
PERMITS

DATE	
NO.	
BY	
FOR	
BY	
FOR	

PERMITS
FOR THE CITY OF CHICAGO
PERMITS

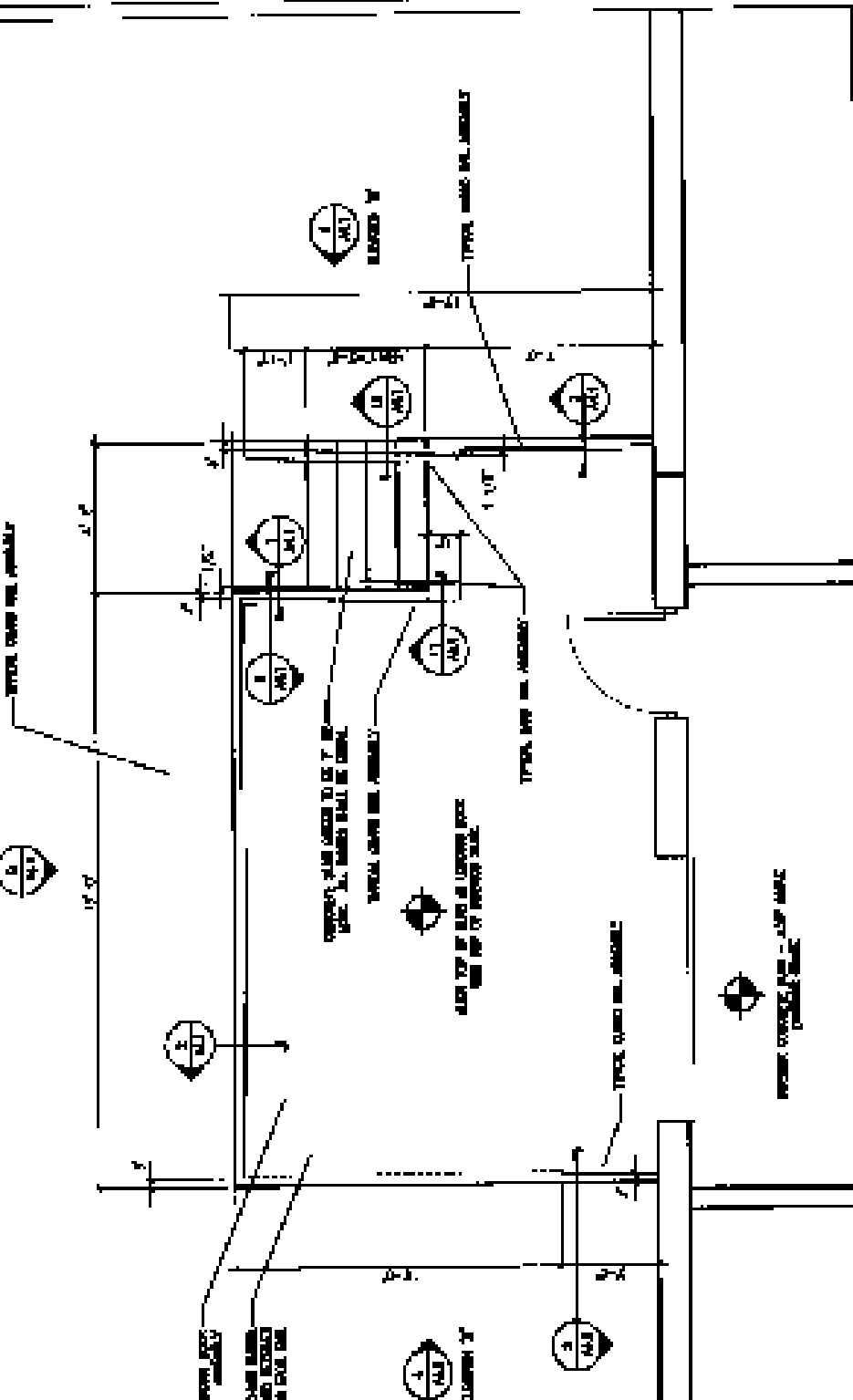
A1.1



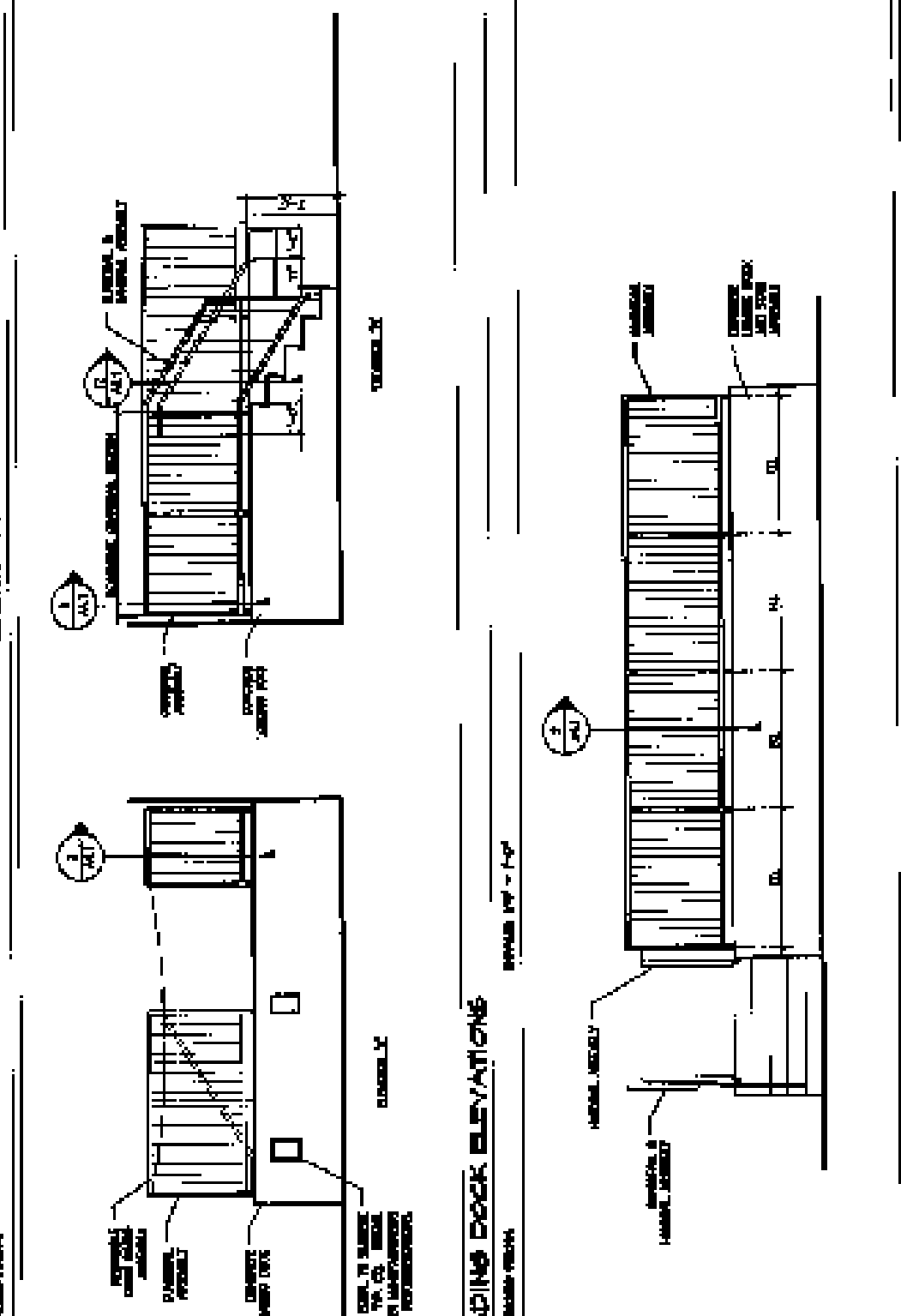
1/2 1/2 1/2 1/2

LAYOUT PLAN
PERMITS

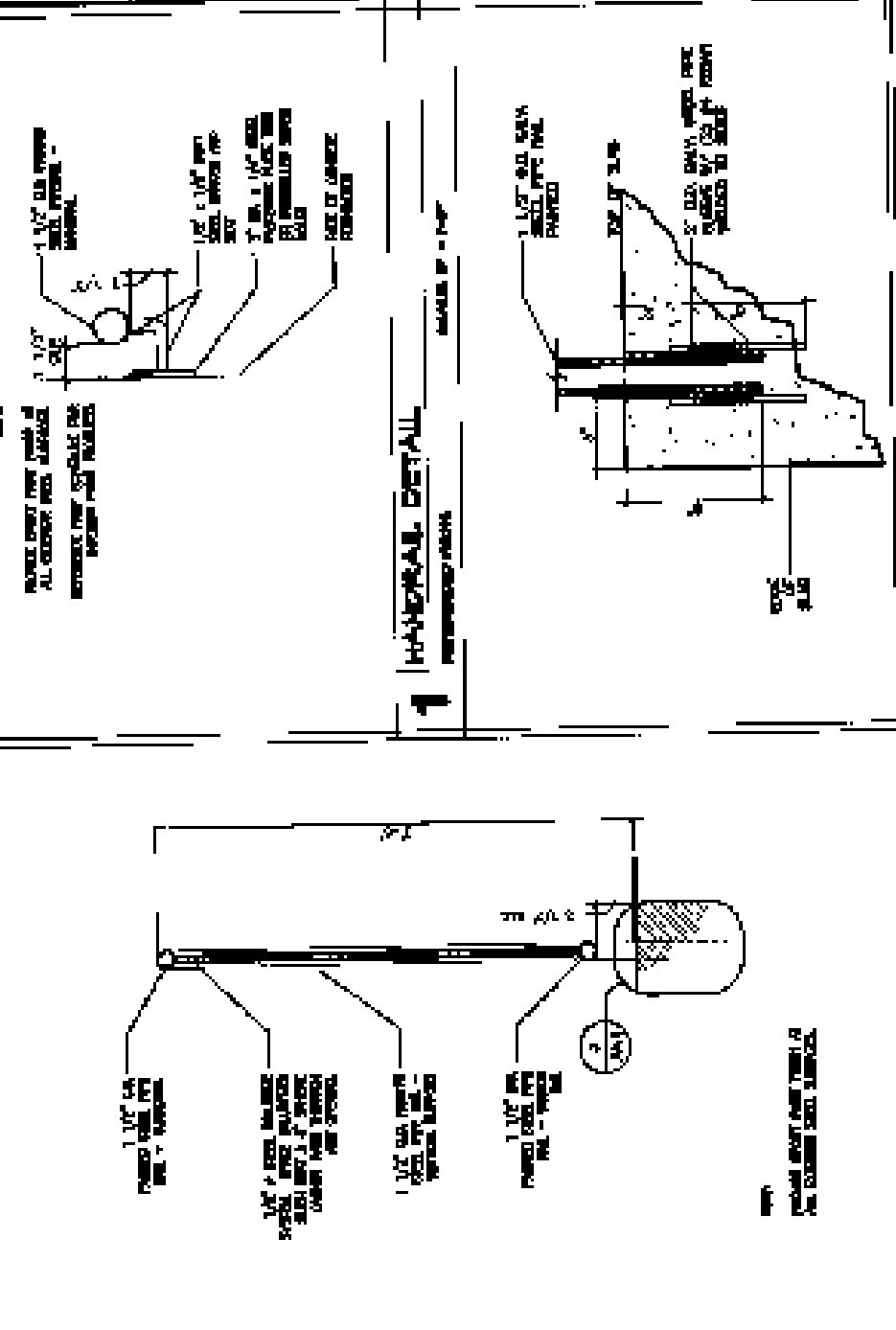
SCALE 1/8" = 1'-0"



LOADING DOCK PLAN
SCALE: 1/4" = 1'-0"

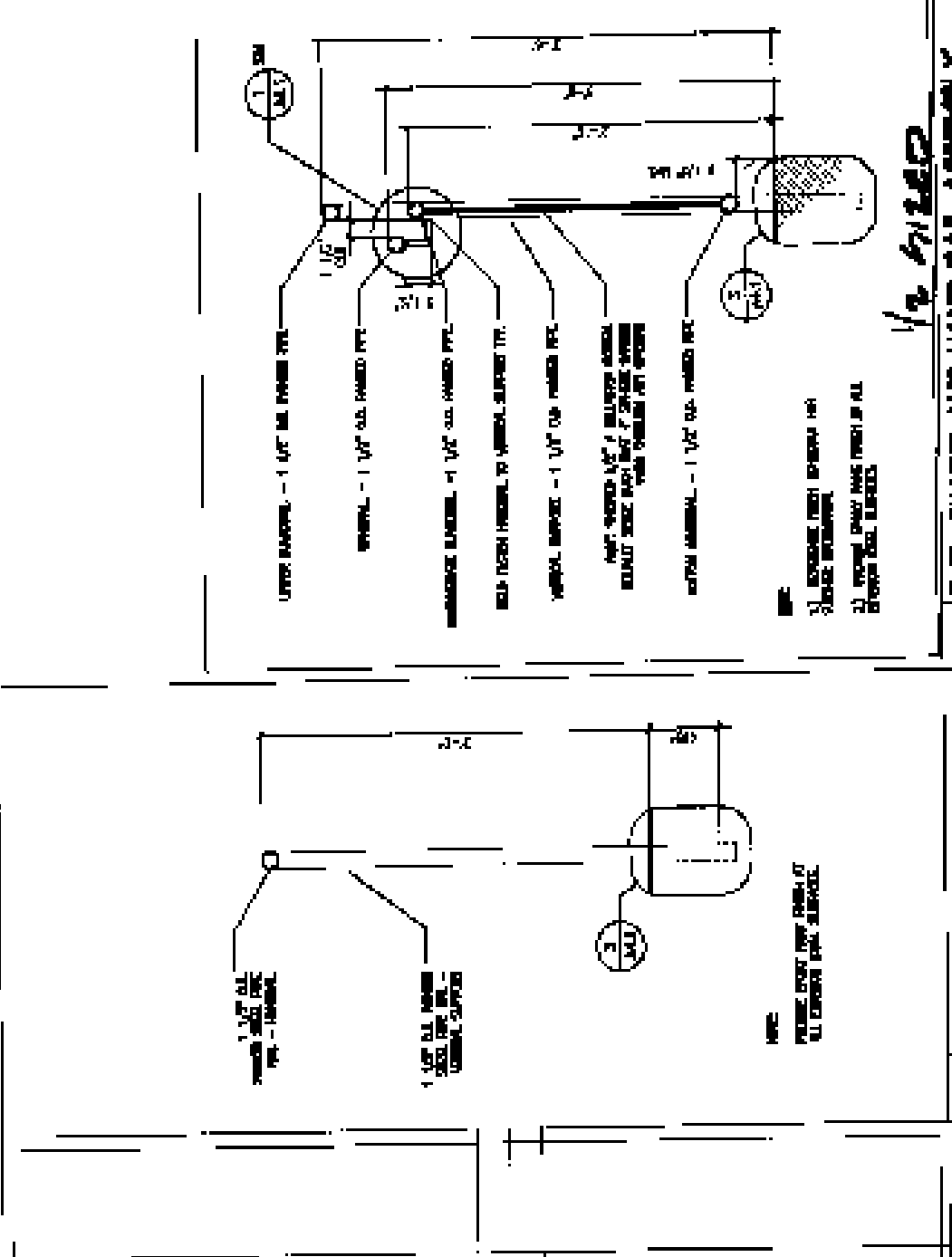


LOADING DOCK ELEVATIONS
SCALE: 1/4" = 1'-0"



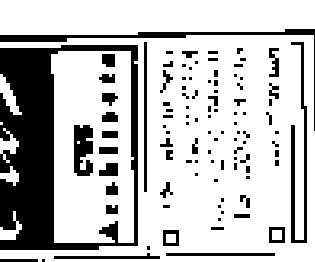
2 TYP. GUARDRAIL ASSEMBLY
SCALE: 1/4" = 1'-0"

3 TYP. BASE OF RAIL POST DETAIL
SCALE: 1/4" = 1'-0"



4 HANDRAIL SUPPORT DETAIL
SCALE: 1/4" = 1'-0"

5 TYP. GUARD AND HAND RAIL ASSEMBLY
SCALE: 1/4" = 1'-0"



FOR INFORMATION ONLY
THIS DOCUMENT IS NOT TO BE USED FOR CONSTRUCTION

ALL WORK SHALL BE IN ACCORDANCE WITH THE REQUIREMENTS OF THE NATIONAL FIRE PROTECTION ASSOCIATION (NFPA) 101, LIFE SAFETY CODE, 2009 EDITION.

THIS DOCUMENT IS NOT TO BE USED FOR CONSTRUCTION

FOR INFORMATION ONLY
THIS DOCUMENT IS NOT TO BE USED FOR CONSTRUCTION

FOR INFORMATION ONLY
THIS DOCUMENT IS NOT TO BE USED FOR CONSTRUCTION

FOR INFORMATION ONLY
THIS DOCUMENT IS NOT TO BE USED FOR CONSTRUCTION

A4.1