

replace existing window with new storefront door sidelight and stair.

Legend:

- = Travel Distance to an exit (250 ft max. allowable).
- = Travel Distance to a Fire extinguisher (75 ft max allowable).
- = Fire extinguisher - min req'd capacity = 3A. Min provided - (3 @ 2A= 6A)
- = Combination LED Exit light & emergency lights.
- = LED Exit light.
- = Emergency Light

Fire and egress data: (Existing Building):

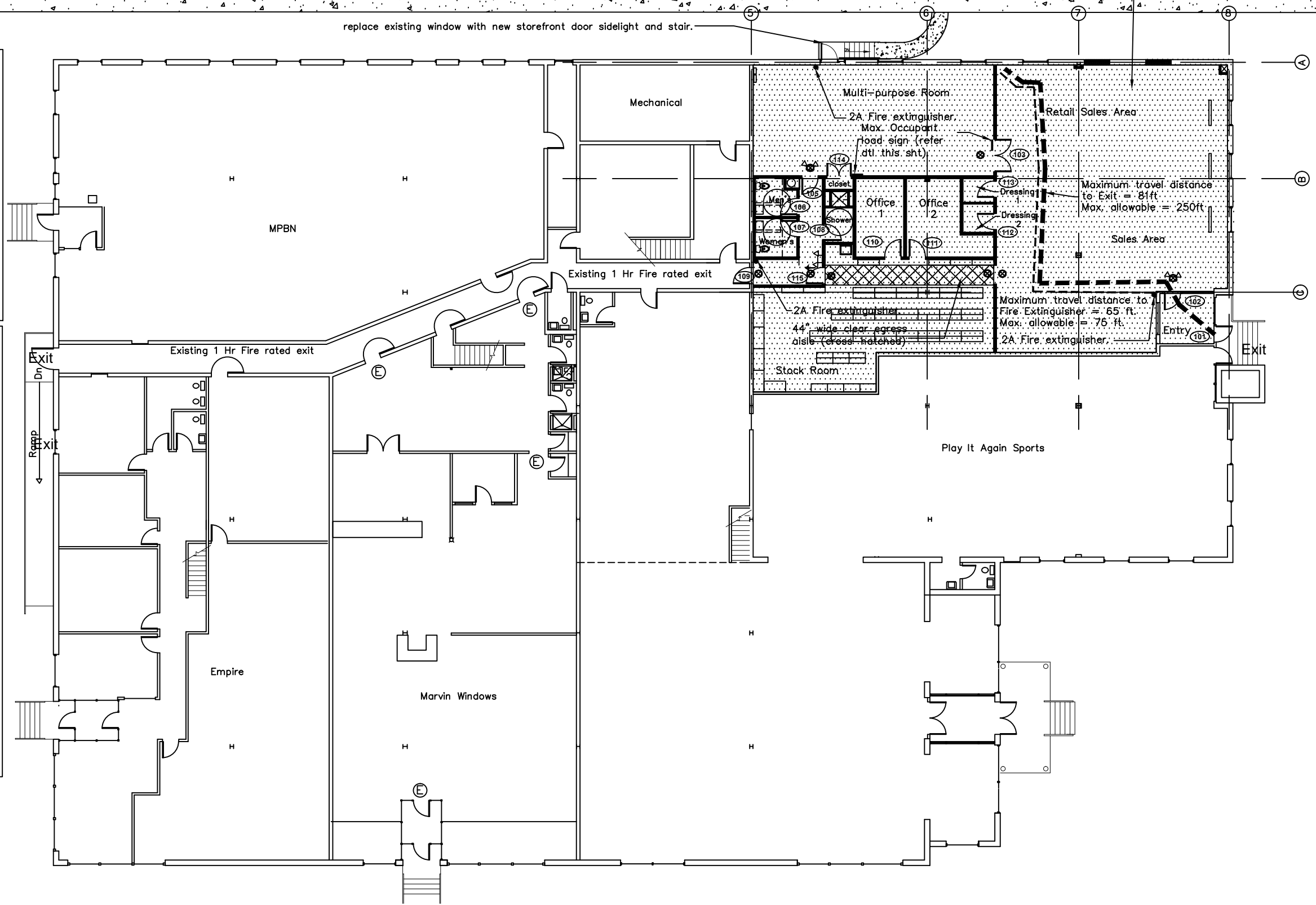
Applicant: Southern Maine Properties Co.
 PO Box 7525
 Portland, Maine 04112
 (207) 772-6404

Project Architect: None.

Sprinklers: Existing bldg has full coverage - wet sprinkler monitored system to NFPA.

Occupancy: Existing Business & Existing Mercantile.

Area/Use/Occupancy ratio	Calculated Occupant Load
• Sales Area - Mercantile Use - Sales area at street level (1 occ/30 sf)	= 75
• Multipurpose Room - Assembly Use - less concentrated without fixed seating or Exercise rooms without equipment (1 occ/15 sf)	= 59
• Stockroom - Mercantile Use - storage, receiving, and shipping not open to the general public (1 Occ/300sf)	= 3
• Mercantile Use - Office - (1 occ/100 sf)	= 3
Total Calculated Occupant Load	= 140
Total Area	= 4800+/-sf



309 Marginal Way Egress Plan

10/10/12 rev 10/29/12 rev 1/14/13

