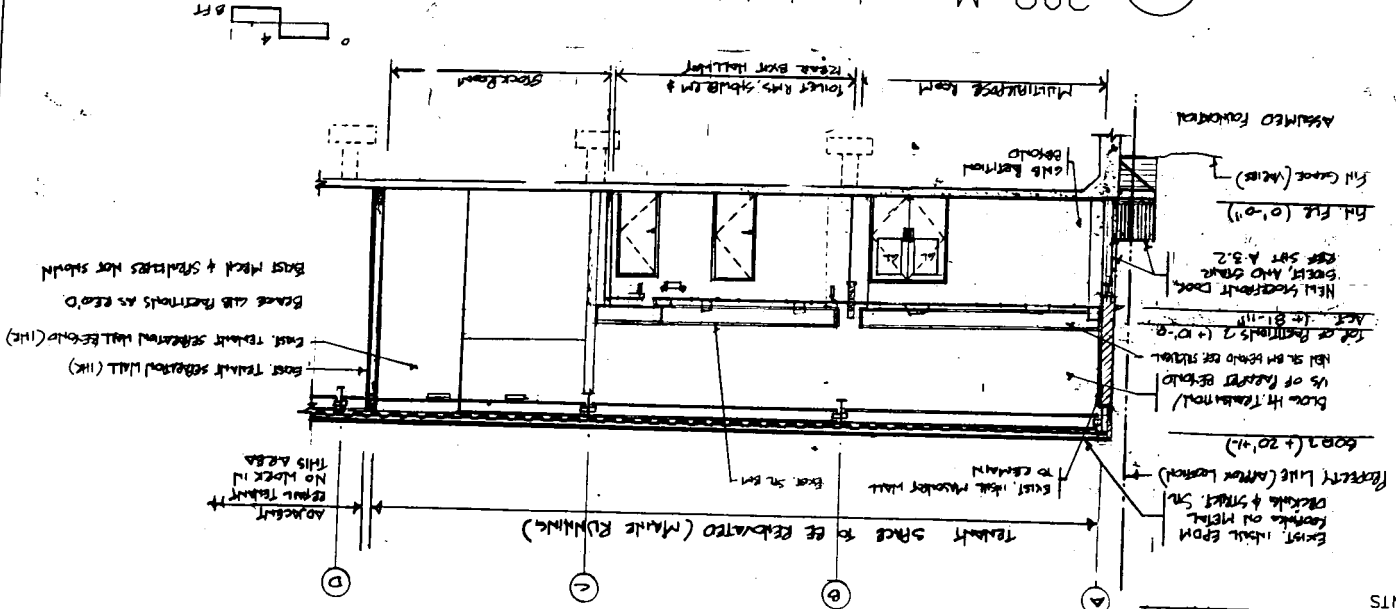


## 309 Marginal Way Bldg Section

10/10/12 Rev 1/14/13

1



2 Interior Wall Section (typical) NTS

8" Gypsum Wallboard (T&S (3) coats) each side of 3/8" (or 5/8") metal studs @ 16" with 3/2" sound bats in wall cavity.

Top of wall at 10ft AFF.



BRACE AND RESTRAINTS AS SHOWN  
BRACE WITH RESTRAINTS AS SHOWN  
BRACE WITH RESTRAINTS AS SHOWN

ADJACENT  
DETAIL TYPICAL  
NO WORK IN  
THIS AREA