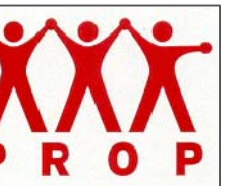
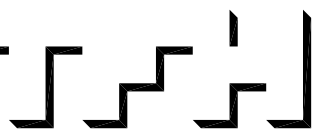


© 2005 TFH ARCHITECTS



CUMBERLAND AVENUE - SOUTH ANDERSON STREET
PEOPLE'S REGIONAL OPPORTUNITY PROGRAM
PORTLAND, MAINE



TFH ARCHITECTS
100 COMMERCIAL STREET
PORTLAND MAINE 04101
TELEPHONE 207 775 6141
ARCHITECTURE PLANNING

CONSULTANTS:

CIVIL
Ponham & Greer
170 US Route One
Falmouth, ME 04105
207-781-5242
STRUCTURAL
Structural Design Consulting
Five Bulfinch Lane
Falmouth, ME 04105-2448
207-878-8038
MECHANICAL
Whitney Engineering
10 Danforth Place
Portland, ME 04102
207-833-2921
ELECTRICAL
Bennett Engineering
7 Bennett Road
Freeport, ME 04032
207-865-9475

REVISIONS:

DATE: 01/14/05

PROJECT No. 0203

DRAWN BY: SA

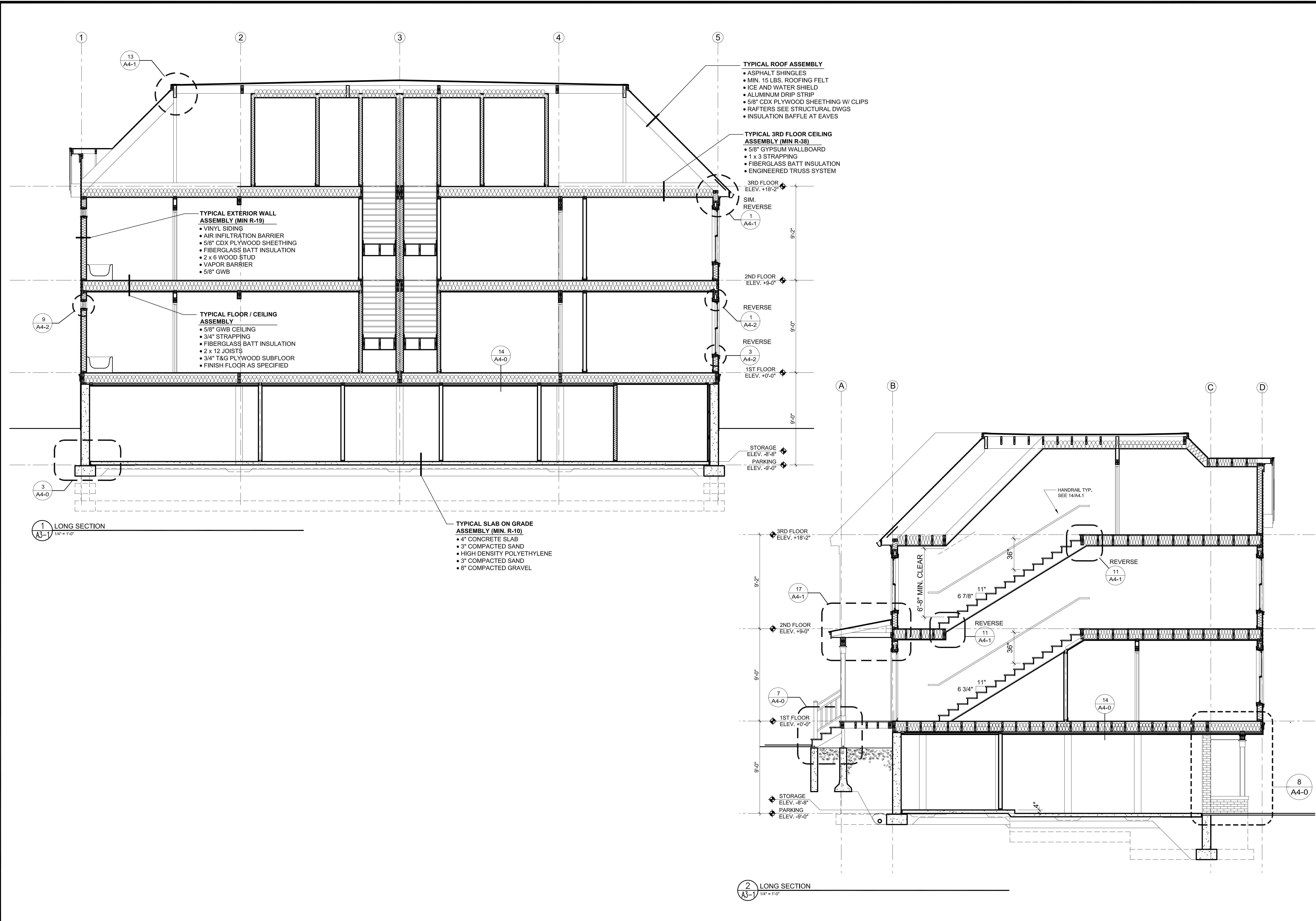
CHECKED BY: DAM

SCALE: AS NOTED

SHEET TITLE:

SECTIONS

A3.1



- TYPICAL ROOF ASSEMBLY**
- ASPHALT SHINGLES
 - MIN. 15 LBS. ROOFING FELT
 - ICE AND WATER SHIELD
 - ALUMINUM DRIP STRIP
 - 5/8" CDX PLYWOOD SHEETING W/ CLIPS
 - RAFTERS SEE STRUCTURAL DWGS
 - INSULATION BAFFLE AT EAVES
- TYPICAL 3RD FLOOR CEILING ASSEMBLY (MIN R-38)**
- 5/8" GYPSUM WALLBOARD
 - 1 x 3 STRAPPING
 - FIBERGLASS BATT INSULATION
 - ENGINEERED TRUSS SYSTEM

- TYPICAL EXTERIOR WALL ASSEMBLY (MIN R-19)**
- VINYL SIDING
 - AIR INFILTRATION BARRIER
 - 5/8" CDX PLYWOOD SHEETING
 - FIBERGLASS BATT INSULATION
 - 2 x 6 WOOD STUD
 - VAPOR BARRIER
 - 5/8" GWB

- TYPICAL FLOOR / CEILING ASSEMBLY**
- 5/8" GWB CEILING
 - 3/4" STRAPPING
 - FIBERGLASS BATT INSULATION
 - 2 x 12 JOISTS
 - 3/4" T&G PLYWOOD SUBFLOOR
 - FINISH FLOOR AS SPECIFIED

- TYPICAL SLAB ON GRADE ASSEMBLY (MIN. R-10)**
- 4" CONCRETE SLAB
 - 3" COMPACTED SAND
 - HIGH DENSITY POLYETHYLENE
 - 3" COMPACTED SAND
 - 8" COMPACTED GRAVEL

1 LONG SECTION
A3-1 1/4" = 1'-0"

2 LONG SECTION
A3-1 1/4" = 1'-0"