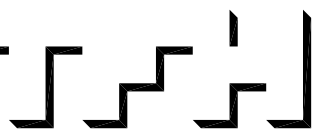


© 2005 TFH ARCHITECTS



ANDERSON STREET - BUILDING 3
PEOPLE'S REGIONAL OPPORTUNITY PROGRAM
PORTLAND, MAINE



TFH ARCHITECTS
100 COMMERCIAL STREET
PORTLAND MAINE 04101
TELEPHONE 207 775 6141
ARCHITECTURE PLANNING

CONSULTANTS:

REVISIONS:

DATE: 01/14/05

PROJECT No. 0406

DRAWN BY: SA

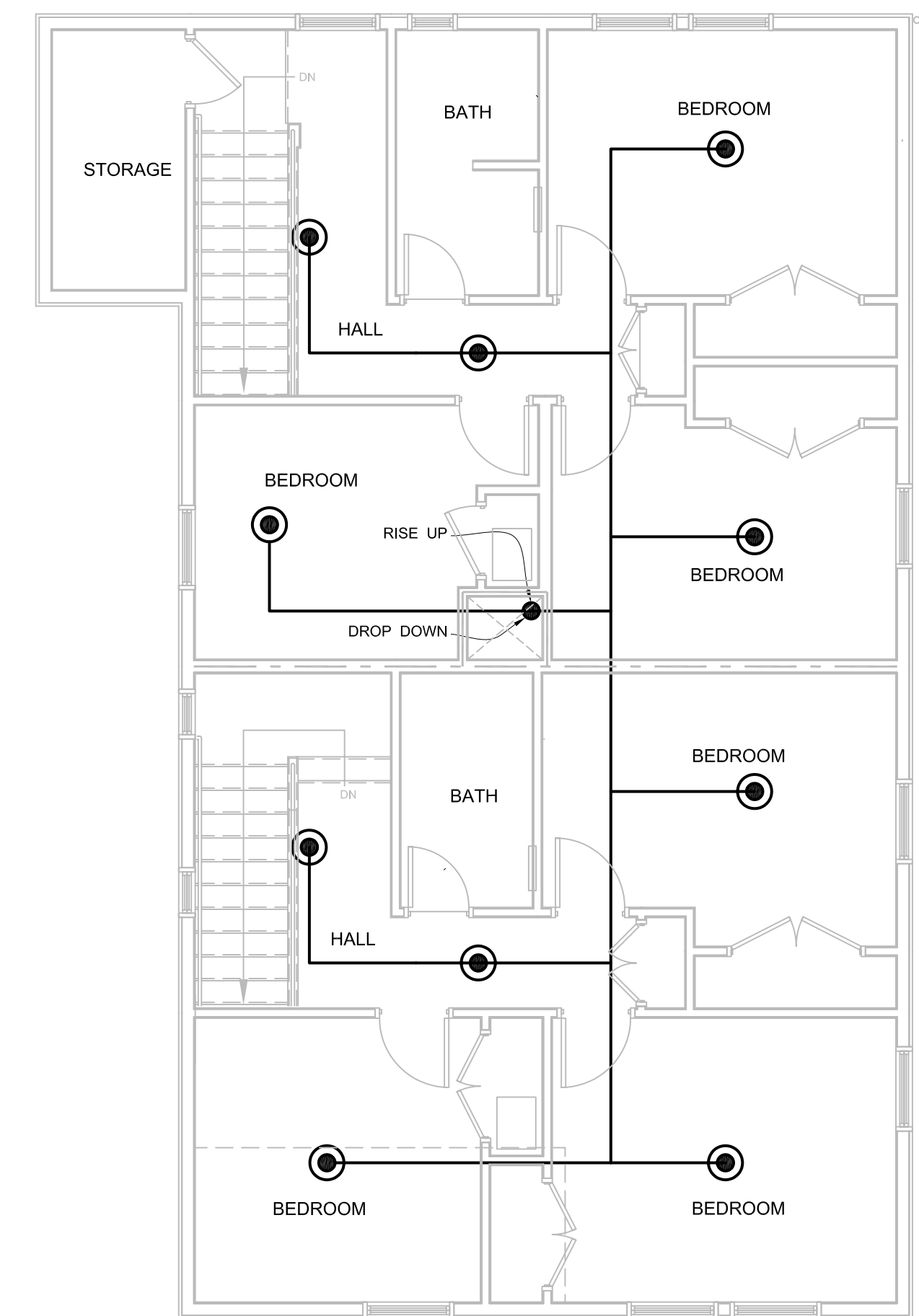
CHECKED BY: DAM

SCALE: AS NOTED

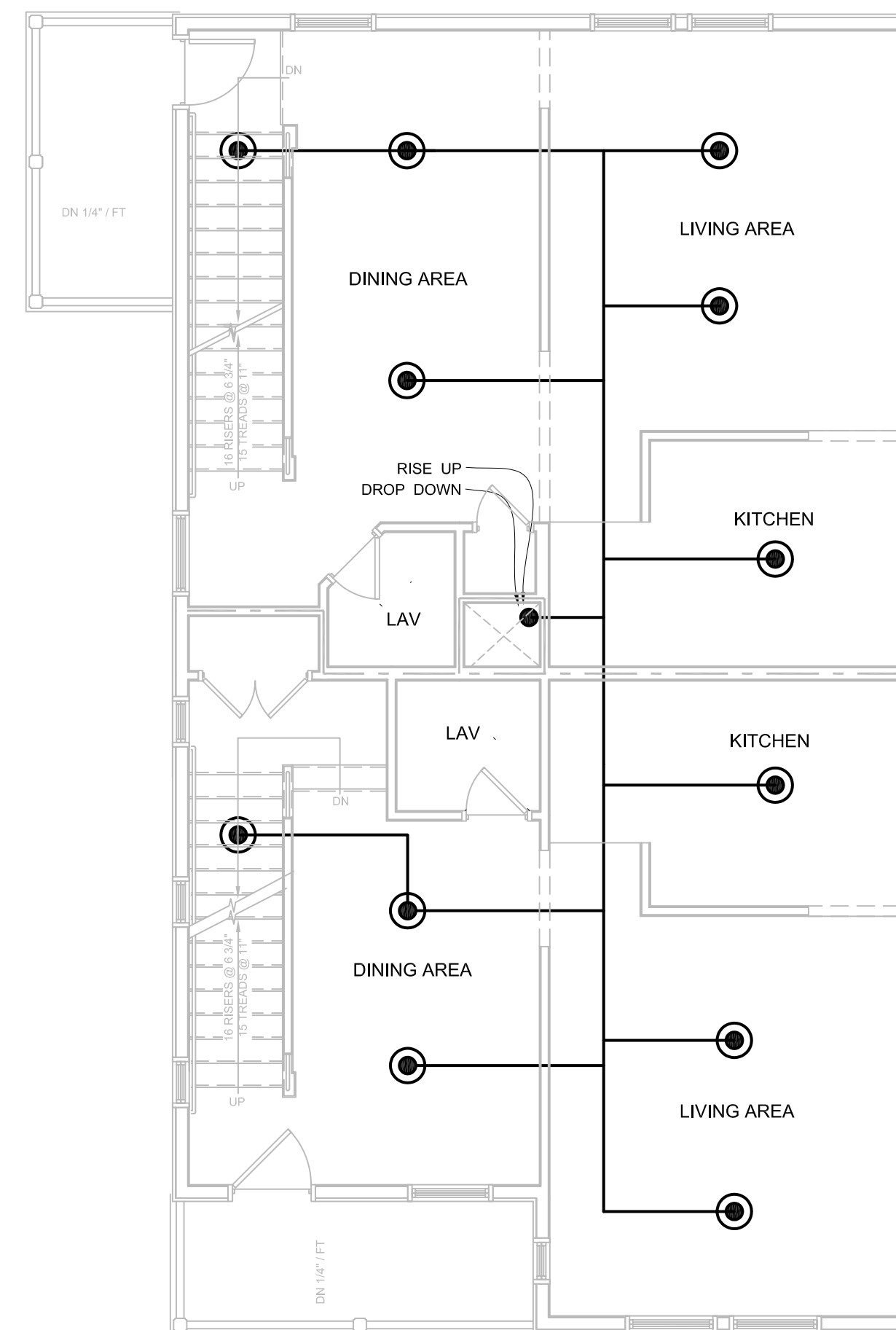
SHEET TITLE:

SPRINKLER PLANS

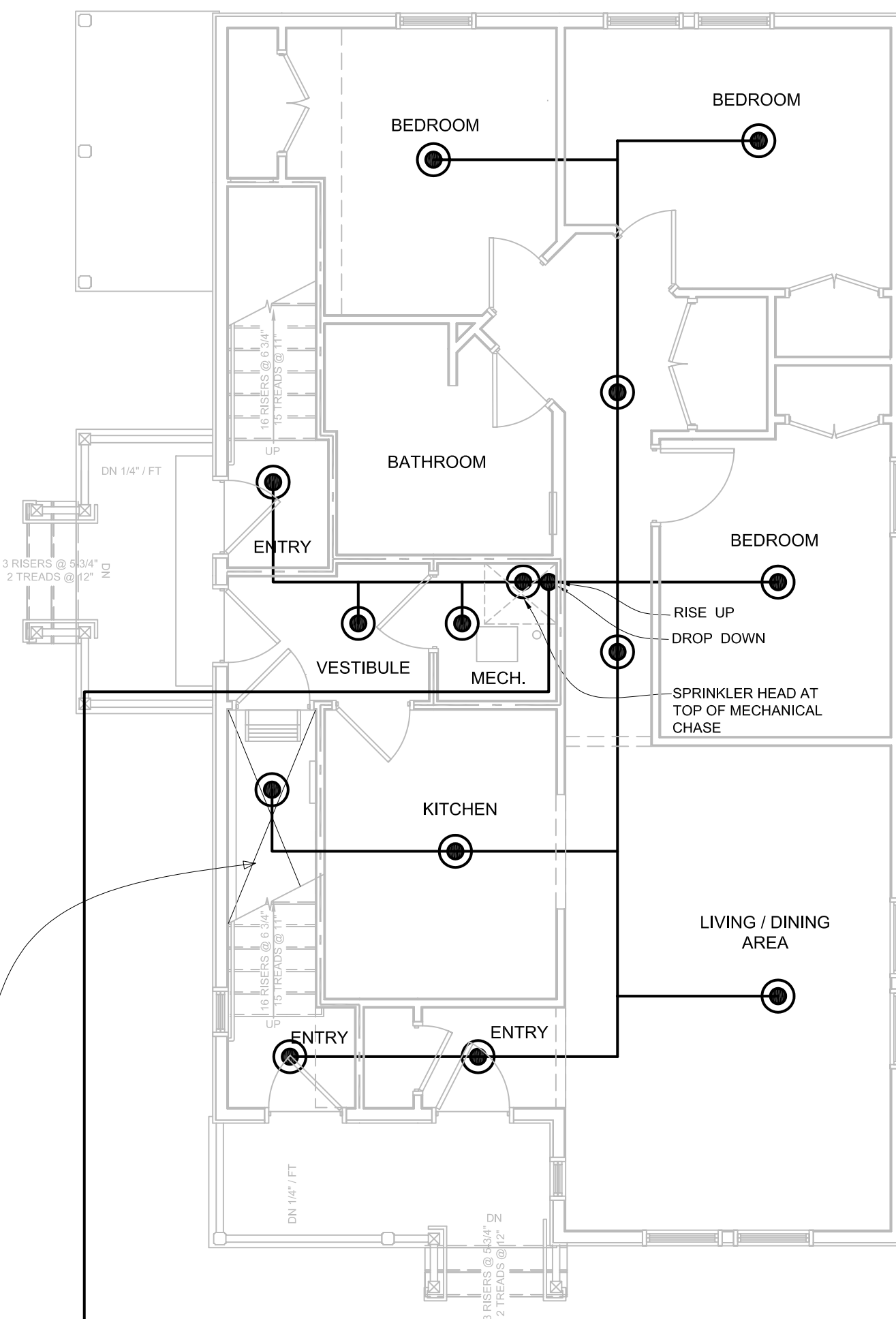
SP1.1



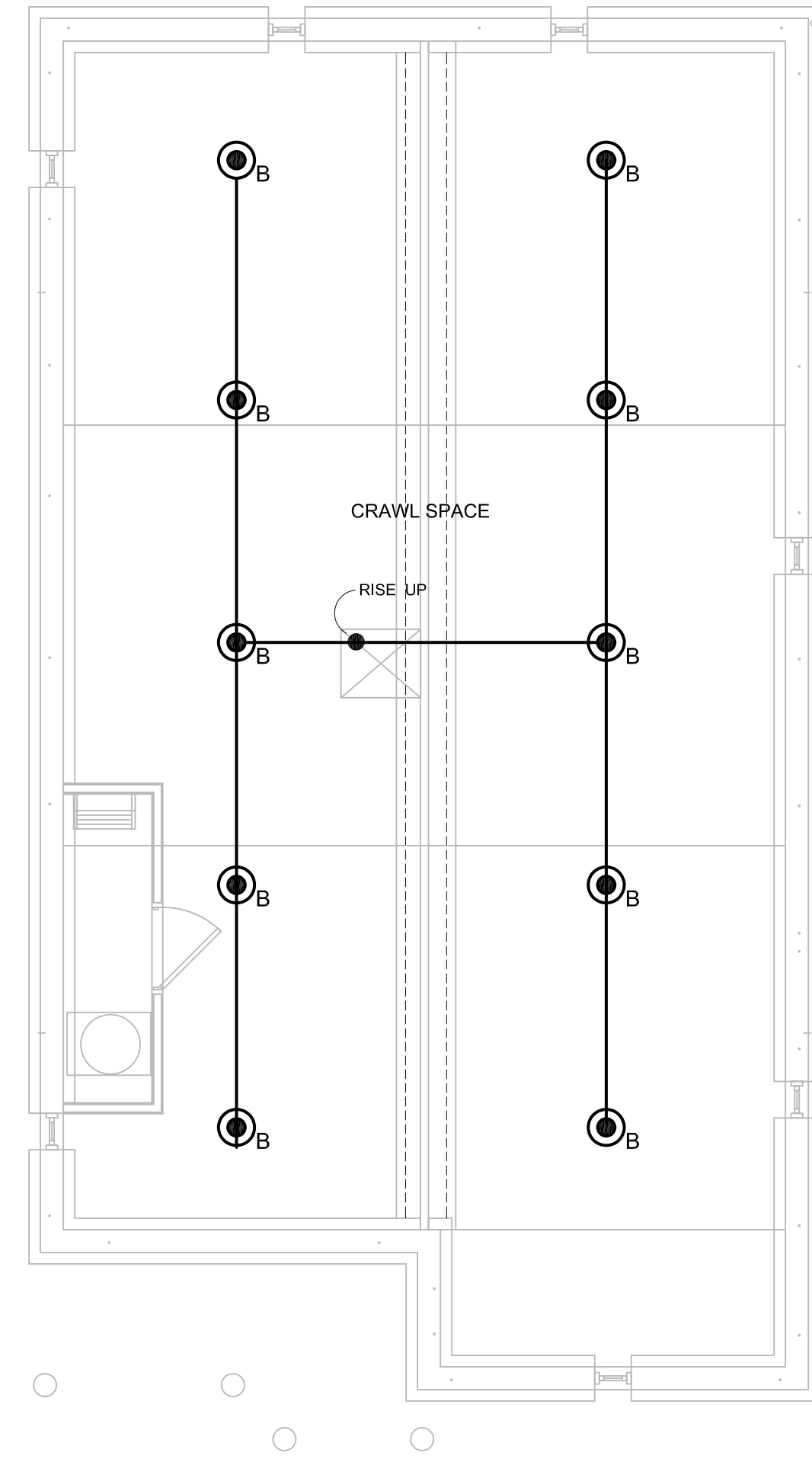
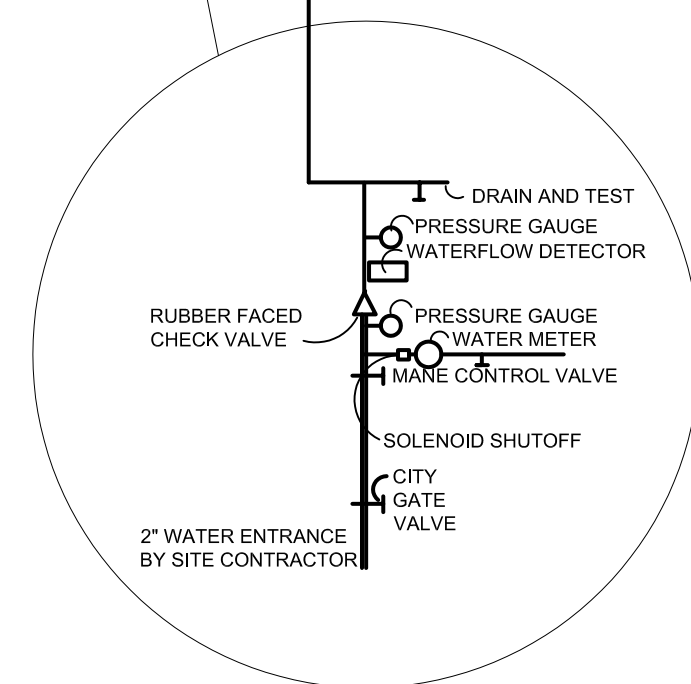
4 THIRD FLOOR
SPI-1 3/16" = 1'-0"



3 SECOND FLOOR
SPI-1 3/16" = 1'-0"



2 FIRST FLOOR
SPI-1 3/16" = 1'-0"



1 CRAWL SPACE
SPI-1 3/16" = 1'-0"

LEGEND

- SPRINKLER HEAD
RELIABLE RES/18 / WHITE OR EQUAL

GENERAL NOTES

1. THE ABOVE SPRINKLER SYSTEM SHALL BE INSTALLED IN STRICT ACCORD WITH NFPA 13R SPECIFICATIONS 1999 EDITION. FINAL DESIGN AND SHOP DRAWINGS WILL BE THE RESPONSIBILITY OF THE LOCAL LICENSED INSTALLER.