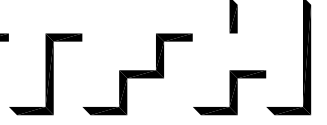


© 2005 TFH ARCHITECTS



ANDERSON STREET - BUILDING 3
PEOPLE'S REGIONAL OPPORTUNITY PROGRAM
PORTLAND, MAINE



TFH ARCHITECTS
100 COMMERCIAL STREET
PORTLAND MAINE 04101
TELEPHONE 207 775 6141
ARCHITECTURE PLANNING

CONSULTANTS:

- CIVIL:**
Preston & Gear
170 US Route One
Falmouth, ME 04105
207-851-5242
- STRUCTURAL:**
Structural Design Consulting
Five Balfour Lane
Falmouth, ME 04105-2448
207-878-0038
- MECHANICAL:**
Whitney Engineering
10 Starbuck Place
Portland, ME 04102
207-633-2921
- ELECTRICAL:**
Bennett Engineering
7 Beacon Road
Fresport, ME 04832
207-865-9475

REVISIONS:

DATE: 01/14/05

PROJECT No. 0406

DRAWN BY: SA/RJS

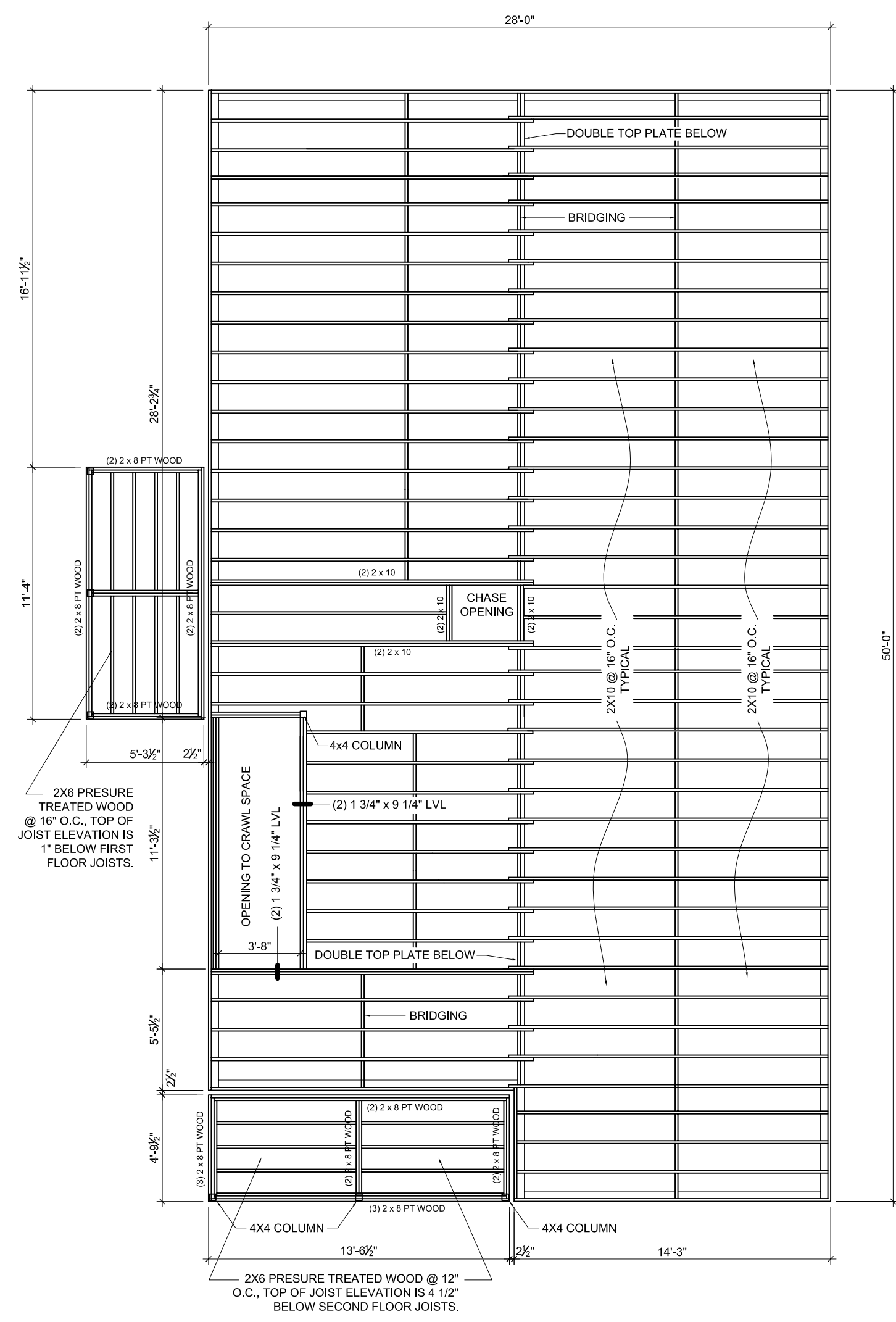
CHECKED BY: DAM

SCALE: AS NOTED

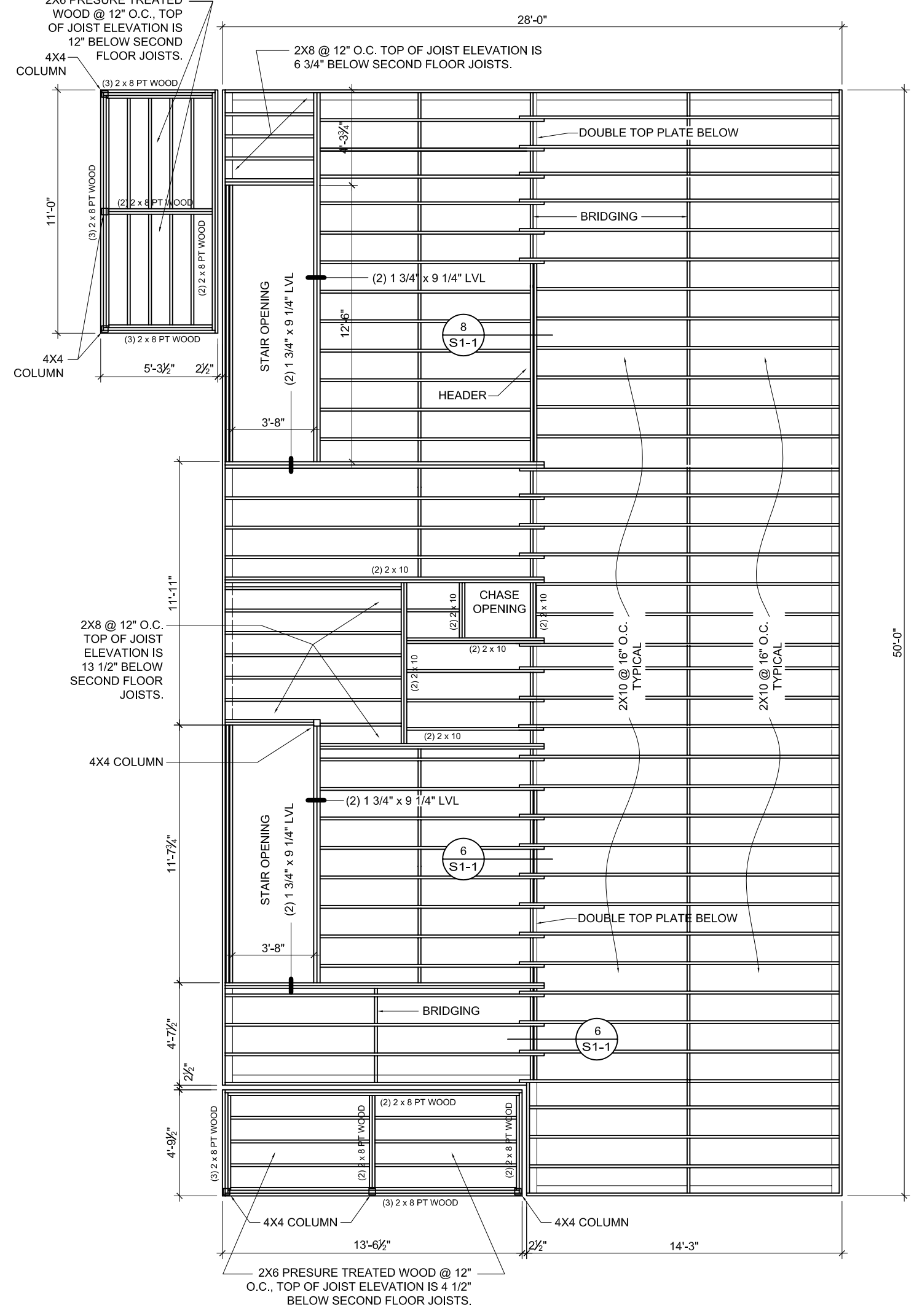
SHEET TITLE:

FRAMING PLANS

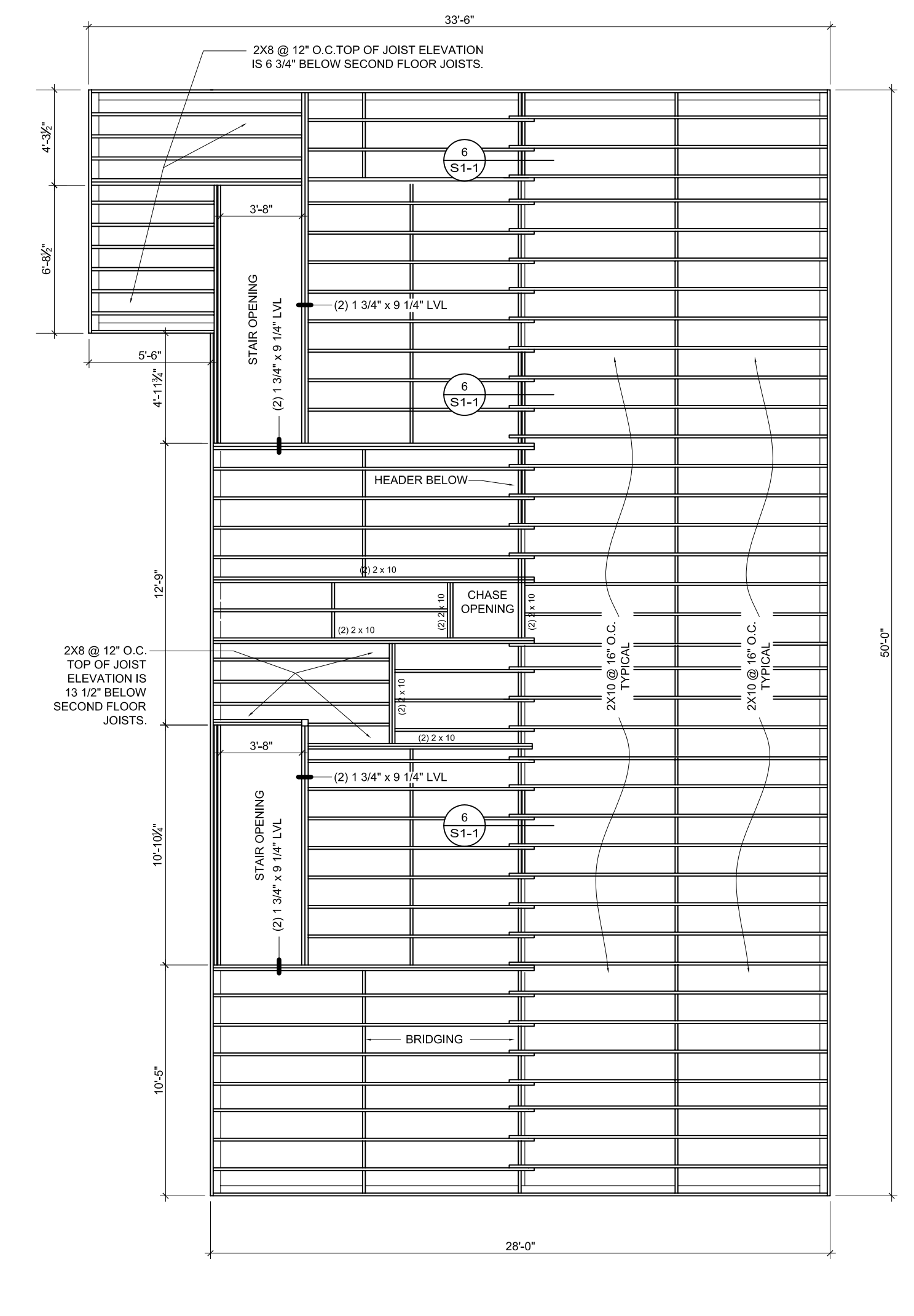
S1.1



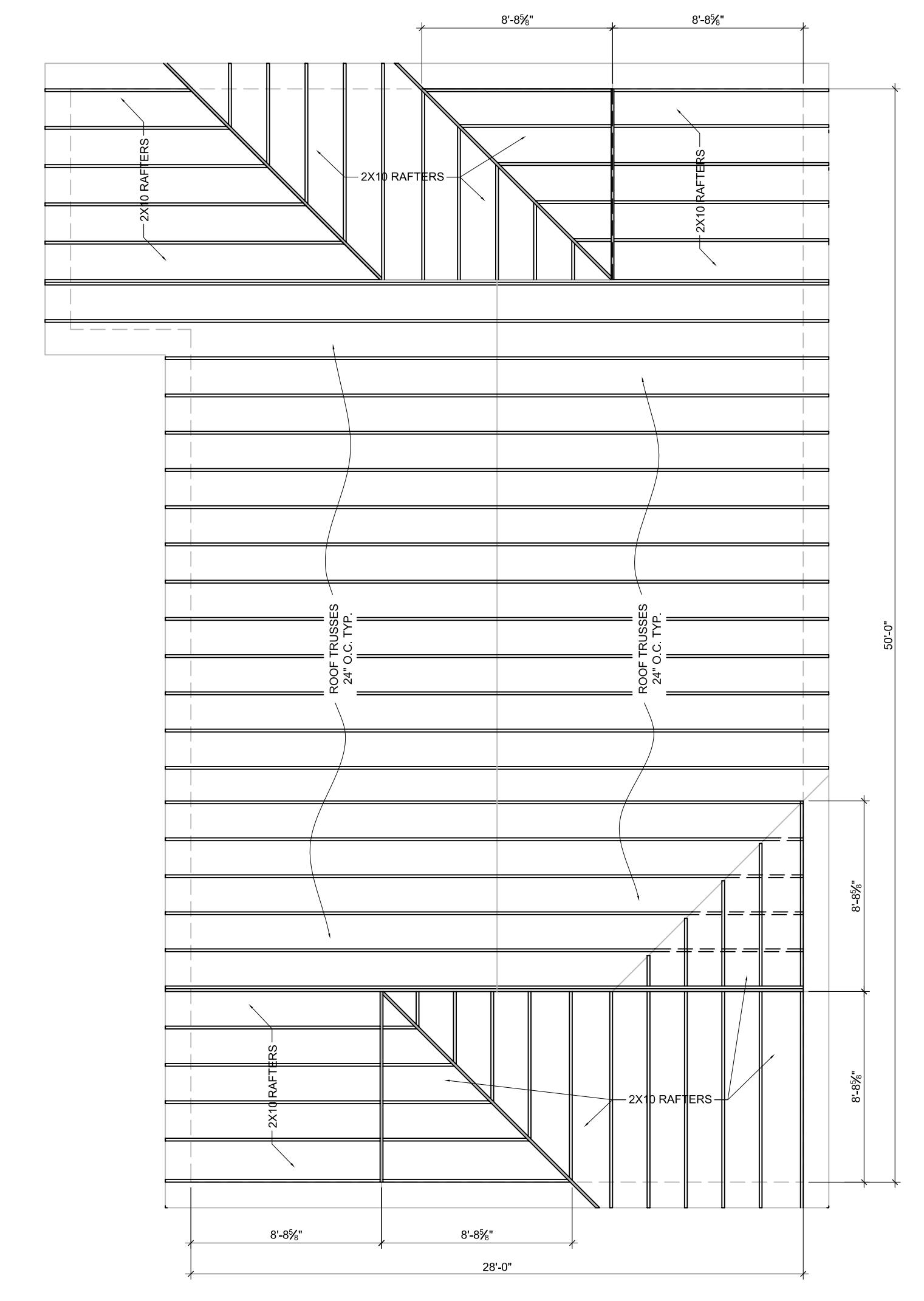
1 FIRST FLOOR FRAMING PLAN
S1-1 3/16" = 1'-0"



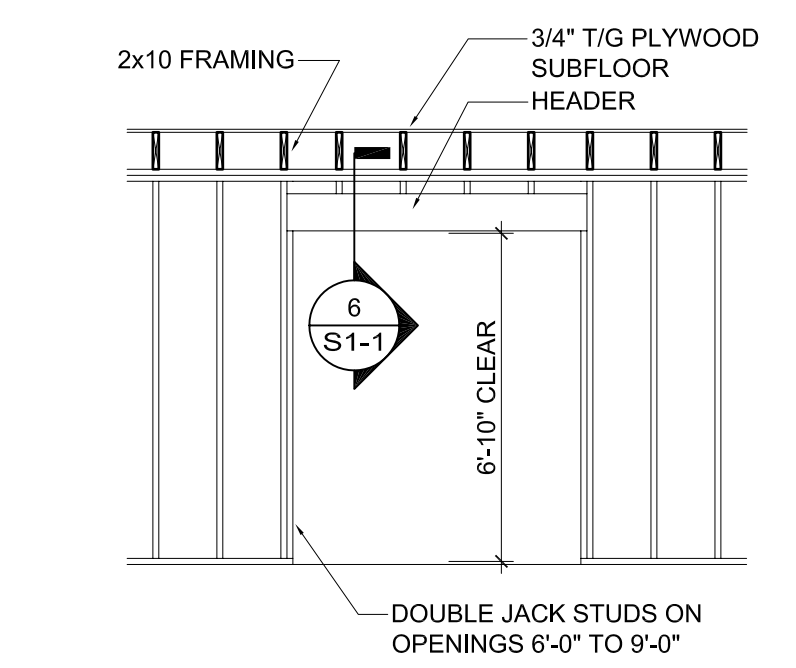
2 SECOND FLOOR FRAMING PLAN
S1-1 3/16" = 1'-0"



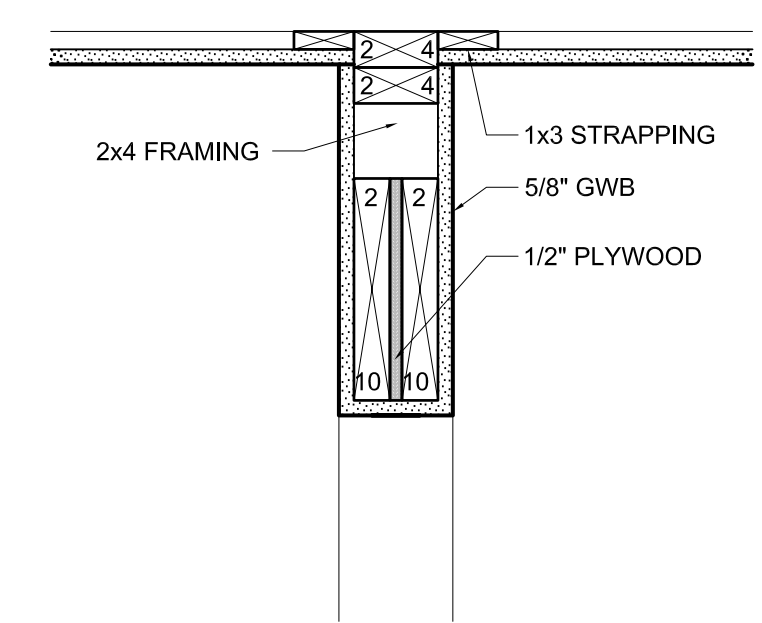
3 THIRD FLOOR FRAMING PLAN
S1-1 3/16" = 1'-0"



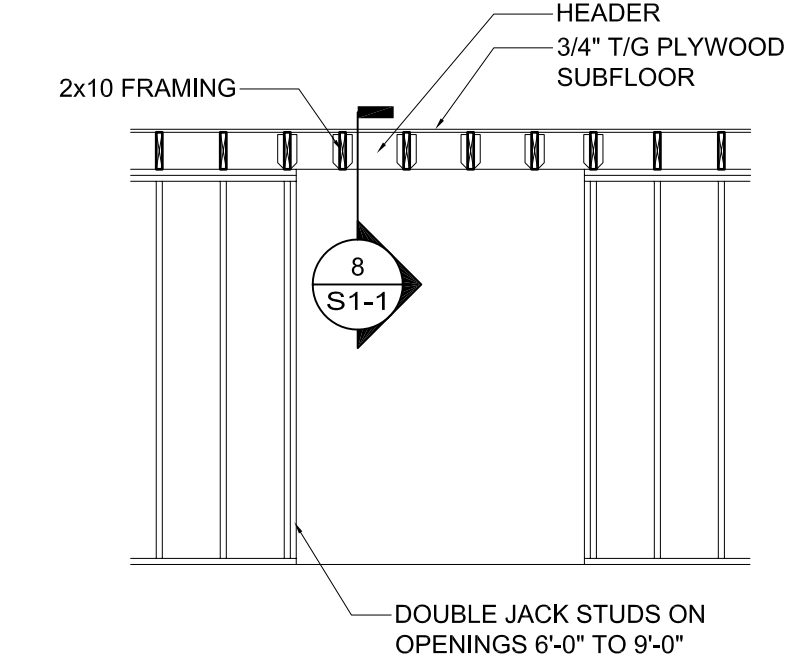
4 ROOF FRAMING PLAN
S1-1 3/16" = 1'-0"



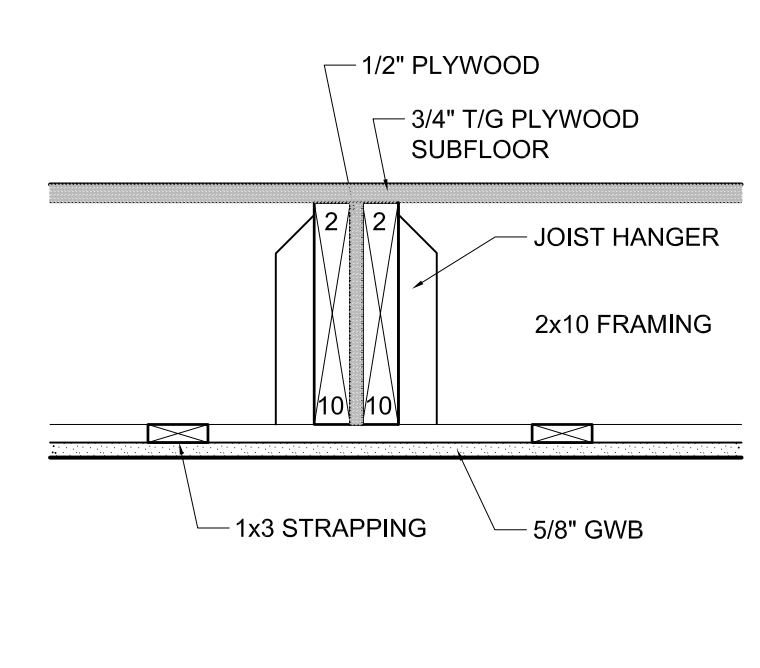
5 FRAMING DETAIL
S1-1 1/4" = 1'-0"



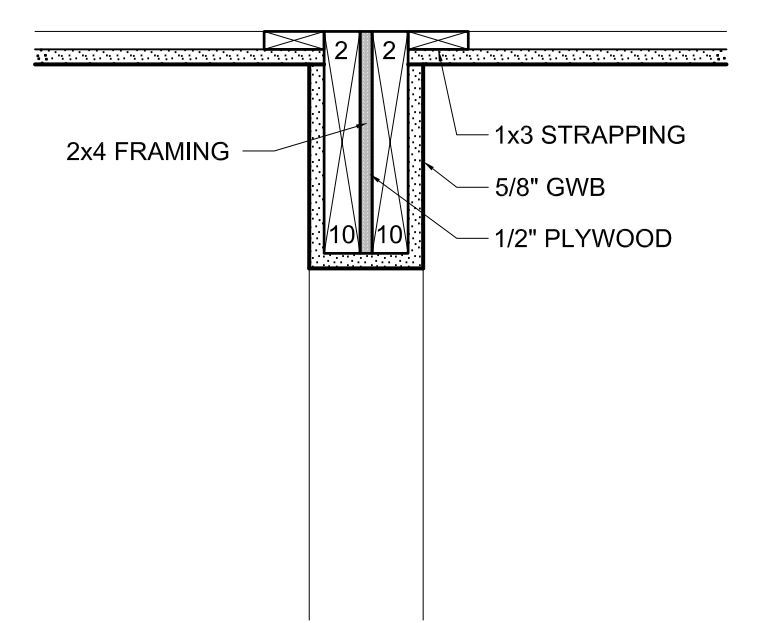
6 SOFFIT DETAIL
S1-1 1/12" = 1'-0"



7 FRAMING DETAIL
S1-1 1/4" = 1'-0"



8 TRANSFER BEAM DETAIL
S1-1 1/12" = 1'-0"



9 TRANSFER BEAM DETAIL
S1-1 1/12" = 1'-0"