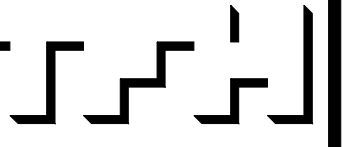


BAYSIDE EAST
 PROPOSED ELDERLY HOUSING
 47 SMITH STREET, PORTLAND
 FOR BAYSIDE EAST LP



TFH ARCHITECTS
 100 COMMERCIAL STREET
 PORTLAND MAINE 04101
 TELEPHONE 207 775 6141
 ARCHITECTURE PLANNING

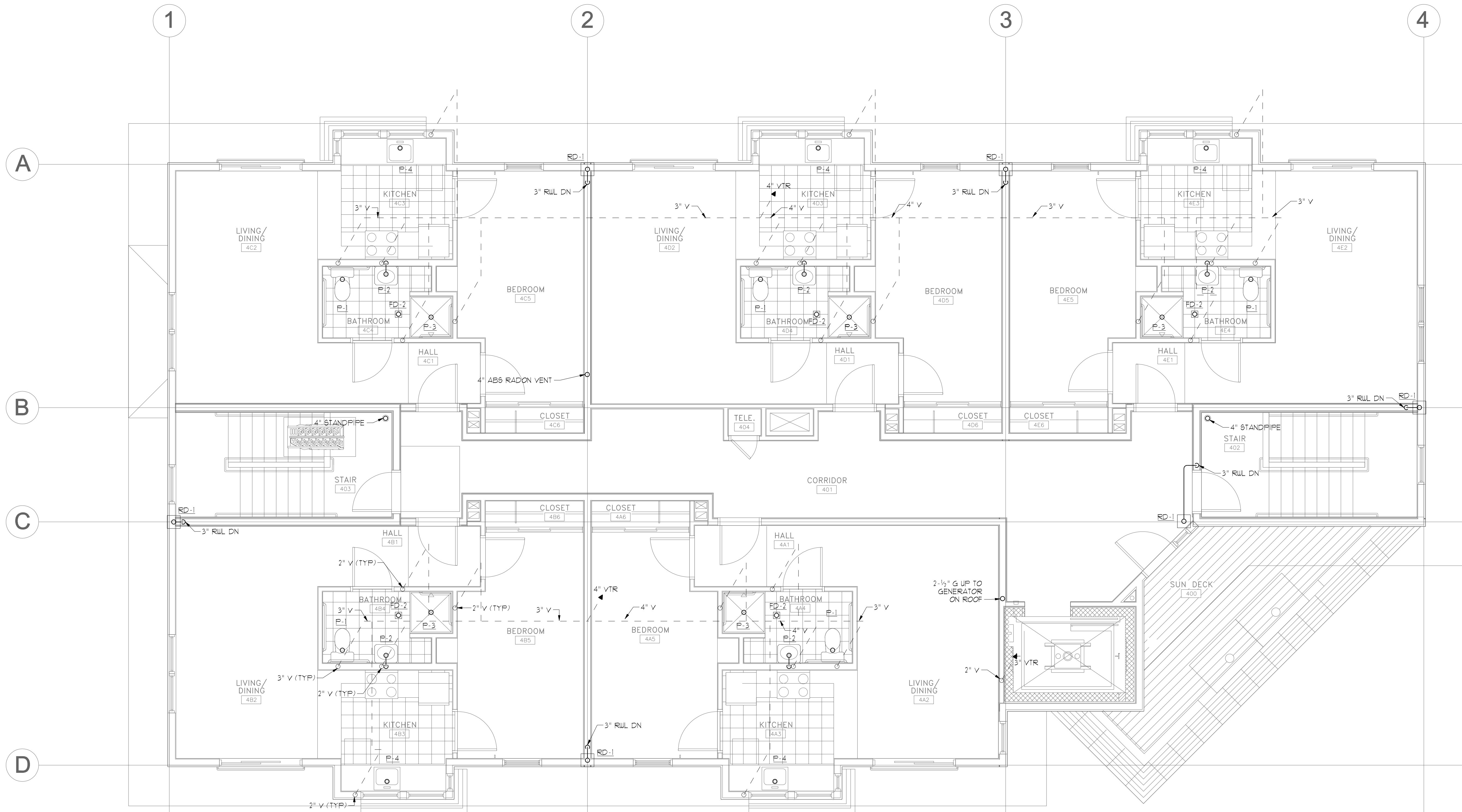
CONSULTANTS:
BENNETT ENGINEERING
 CONSULTING ENGINEERS
 100 STATE STREET
 PORTLAND, MAINE 04101

REVISIONS:

DATE: MAY 18, 2007
 PROJECT No. 0514
 DRAWN BY: JMV
 CHECKED BY: SPDoel
 SCALE: AS NOTED

SHEET TITLE:
FOURTH FLOOR PLUMBING PLAN

M2.5



NOTES
 1. UNIT BRANCH PIPING SHALL BE 1" CW AND 3/4" HW UNLESS OTHERWISE NOTED.
 2. UNIT BRANCH PIPING SHALL HAVE SIZE 'A' WATER HAMMER ARRESTORS INSTALLED BEFORE THE LAST FIXTURE ON BOTH HW AND CW PIPING.

FOURTH FLOOR PLUMBING PLAN
 SCALE - 1/4" = 1'-0"

SANITARY AND VENT STACK SCHEDULE**

TAG	FIXTURE TYPE	SANITARY STACK SIZE (IN) *	VENT STACK SIZE (IN) *
P-1	WATER CLOSET	4"	3"
P-2	LAVATORY	2"	2"
P-3	SHOWER	2-1/2"	2"
P-4	KITCHEN SINK	2-1/2"	2"
FD-1	FLOOR DRAIN	2-1/2"	2"

* - UNLESS NOTED OTHERWISE
 ** - BRANCH PIPING TO INDIVIDUAL FIXTURES SHALL BE SIZED PER PLUMBING FIXTURE SCHEDULE

