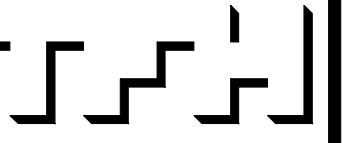


**BAYSIDE EAST**  
 PROPOSED ELDERLY HOUSING  
 47 SMITH STREET, PORTLAND  
 FOR BAYSIDE EAST LP



TFH ARCHITECTS  
 100 COMMERCIAL STREET  
 PORTLAND MAINE 04101  
 TELEPHONE 207 775 6141  
 ARCHITECTURE PLANNING

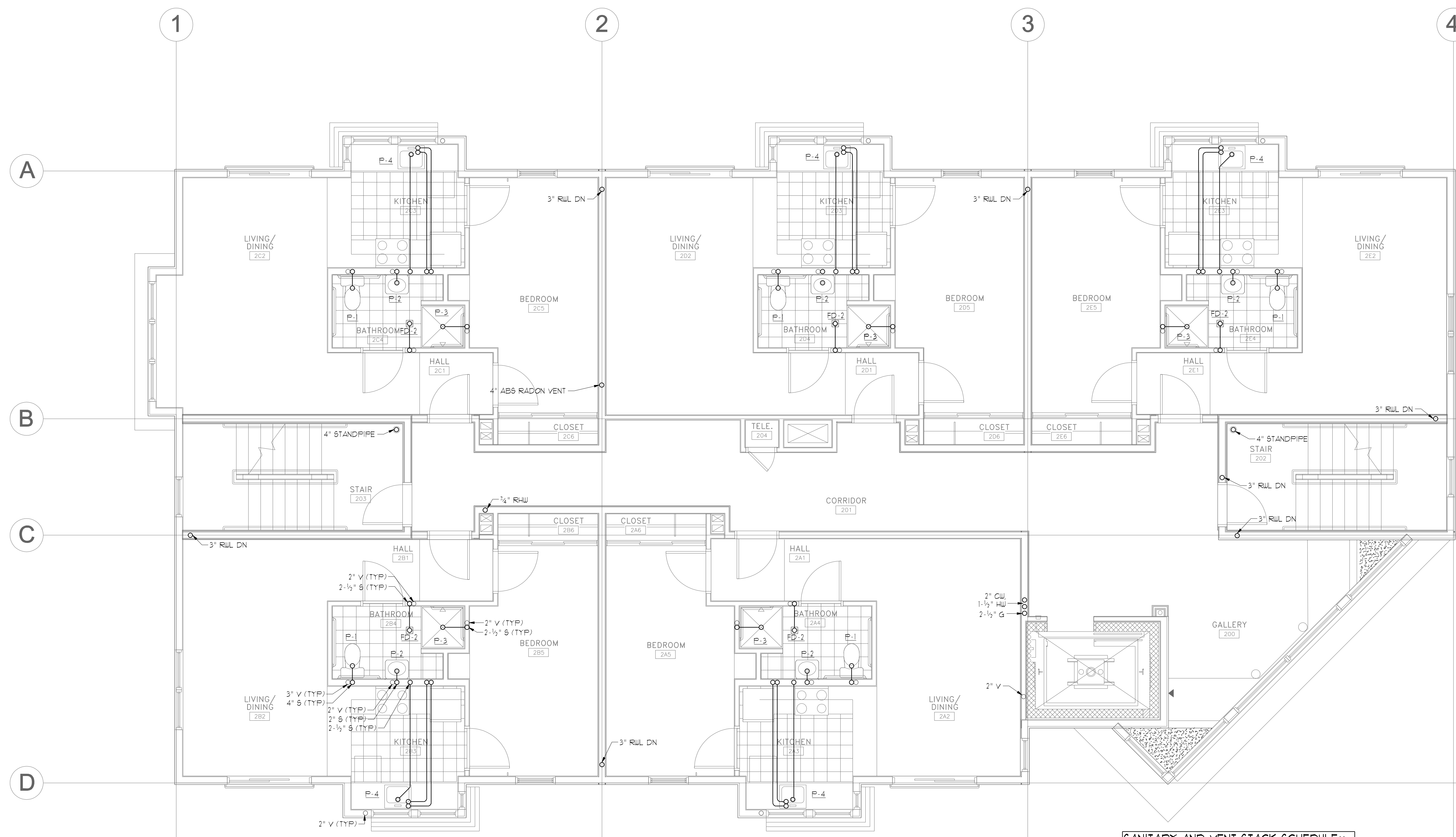
CONSULTANTS:  
**BENNETT ENGINEERING**  
 CONSULTING ENGINEERS  
1000 Commercial Street, Portland, ME 04101  
 TEL: 207 775 6141

REVISIONS:

DATE: MAY 18, 2007  
 PROJECT No. 0514  
 DRAWN BY: JMV  
 CHECKED BY: SPDoel  
 SCALE: AS NOTED

SHEET TITLE:  
**SECOND FLOOR PLUMBING PLAN**

M2.3



**NOTES**  
 1. UNIT BRANCH PIPING SHALL BE 1" CW AND 3/4" HW UNLESS OTHERWISE NOTED.  
 2. UNIT BRANCH PIPING SHALL HAVE SIZE 'A' WATER HAMMER ARRESTORS INSTALLED BEFORE THE LAST FIXTURE ON BOTH HW AND CW PIPING.

**SECOND FLOOR PLUMBING PLAN**  
 SCALE - 1/4" = 1'-0"

**SANITARY AND VENT STACK SCHEDULE\*\***

TAG	FIXTURE TYPE	SANITARY STACK SIZE (IN.)*	VENT STACK SIZE (IN.)*
P-1	WATER CLOSET	4"	3"
P-2	LAVATORY	2"	2"
P-3	SHOWER	2-1/2"	2"
P-4	KITCHEN SINK	2-1/2"	2"
FD-1	FLOOR DRAIN	2-1/2"	2"

\*\* - UNLESS NOTED OTHERWISE  
 \*\* - BRANCH PIPING TO INDIVIDUAL FIXTURES SHALL BE SIZED PER PLUMBING FIXTURE SCHEDULE

