

BAYSIDE EAST
 PROPOSED ELDERLY HOUSING
 47 SMITH STREET, PORTLAND
 FOR BAYSIDE EAST LP

TFH ARCHITECTS
 100 COMMERCIAL STREET
 PORTLAND MAINE 04101
 TELEPHONE 207 775 6141
 ARCHITECTURE PLANNING

CONSULTANTS:
BENNETT ENGINEERING
 CONSULTING ENGINEERS

REVISIONS:

DATE: MAY 18, 2007

PROJECT No. 0514

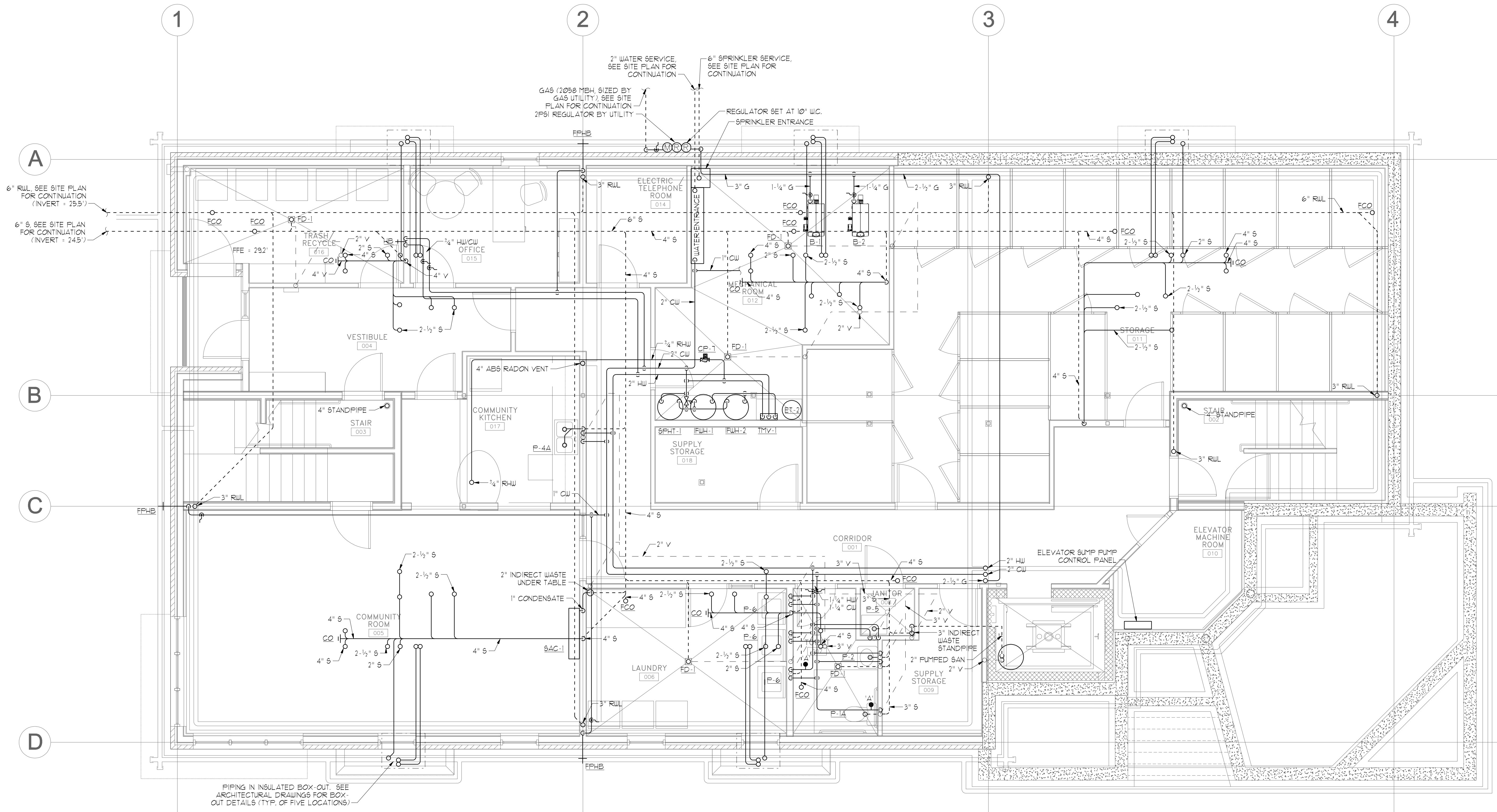
DRAWN BY: JMV

CHECKED BY: SPD/ael

SCALE: AS NOTED

SHEET TITLE:
BASEMENT PLUMBING PLAN

M2.1



PIPING IN INSULATED BOX OUT. SEE ARCHITECTURAL DRAWINGS FOR BOX-OUT DETAILS (TYP. OF FIVE LOCATIONS)

BASEMENT PLUMBING PLAN
 SCALE - 1/4" = 1'-0"

SANITARY AND VENT STACK SCHEDULE**

TAG	FIXTURE TYPE	SANITARY STACK SIZE (IN) *	VENT STACK SIZE (IN) *
P-1	WATER CLOSET	4"	3"
P-2	LAVATORY	2"	2"
P-3	SHOWER	2-1/2"	2"
P-4	KITCHEN SINK	2-1/2"	2"
FD-2	FLOOR DRAIN	2-1/2"	2"

* - UNLESS NOTED OTHERWISE
 ** - BRANCH PIPING TO INDIVIDUAL FIXTURES SHALL BE SIZED PER PLUMBING FIXTURE SCHEDULE

